

1946

## War-Time log of the U.S.S. Tate (AKA-70)

United States Navy

Follow this and additional works at: [http://digicom.bpl.lib.me.us/ww\\_reg\\_his](http://digicom.bpl.lib.me.us/ww_reg_his)

---

### Recommended Citation

United States Navy, "War-Time log of the U.S.S. Tate (AKA-70)" (1946). *World War Regimental Histories*. 158.  
[http://digicom.bpl.lib.me.us/ww\\_reg\\_his/158](http://digicom.bpl.lib.me.us/ww_reg_his/158)

This Book is brought to you for free and open access by the World War Collections at Bangor Community: Digital Commons@bpl. It has been accepted for inclusion in World War Regimental Histories by an authorized administrator of Bangor Community: Digital Commons@bpl. For more information, please contact [ccoombs@bpl.lib.me.us](mailto:ccoombs@bpl.lib.me.us).

DOES NOT  
CIRCULATE

---

# WAR-TIME LOG

*of the*

U. S. S.

# TATE

AKA-70

---



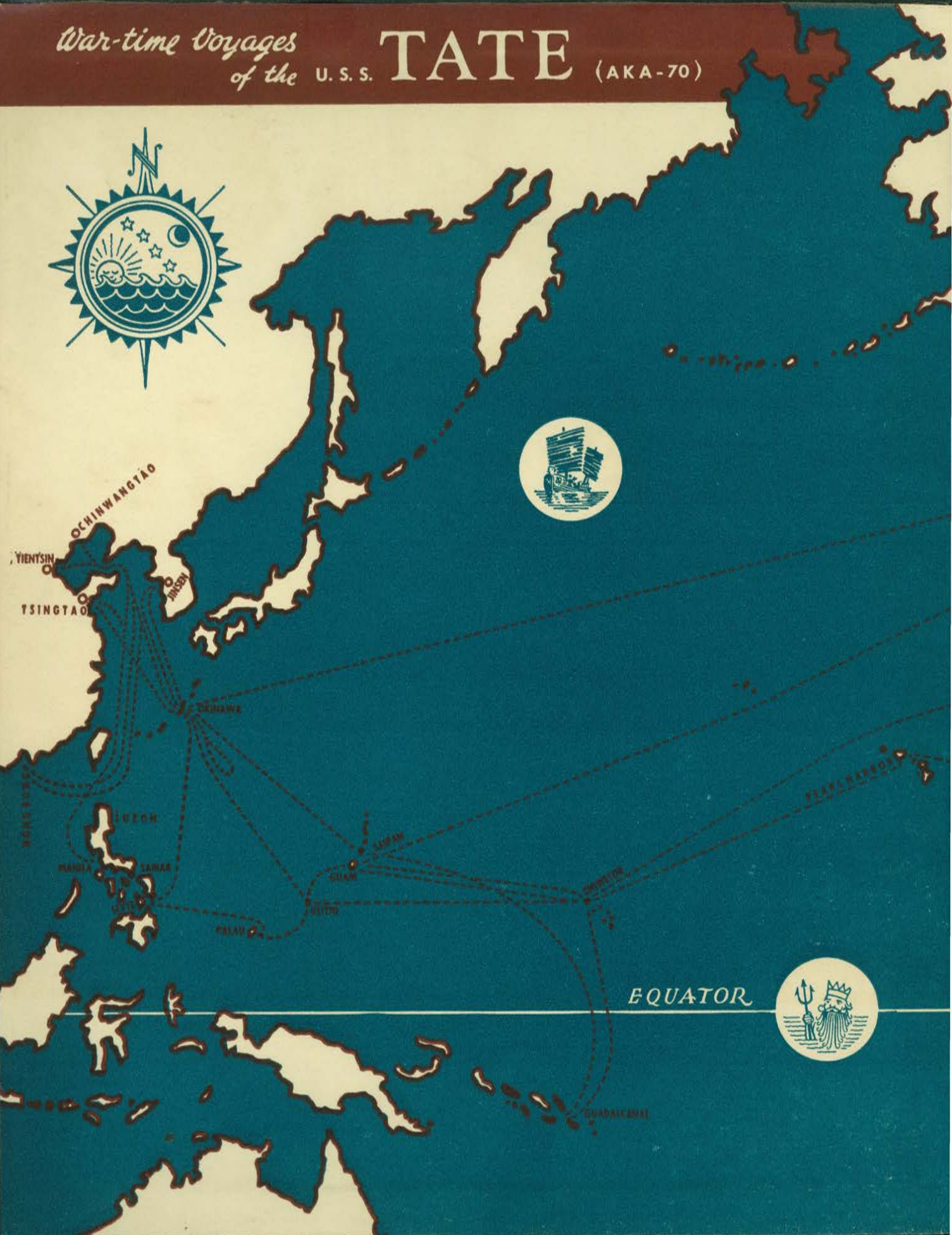


*War-time Voyages  
of the*

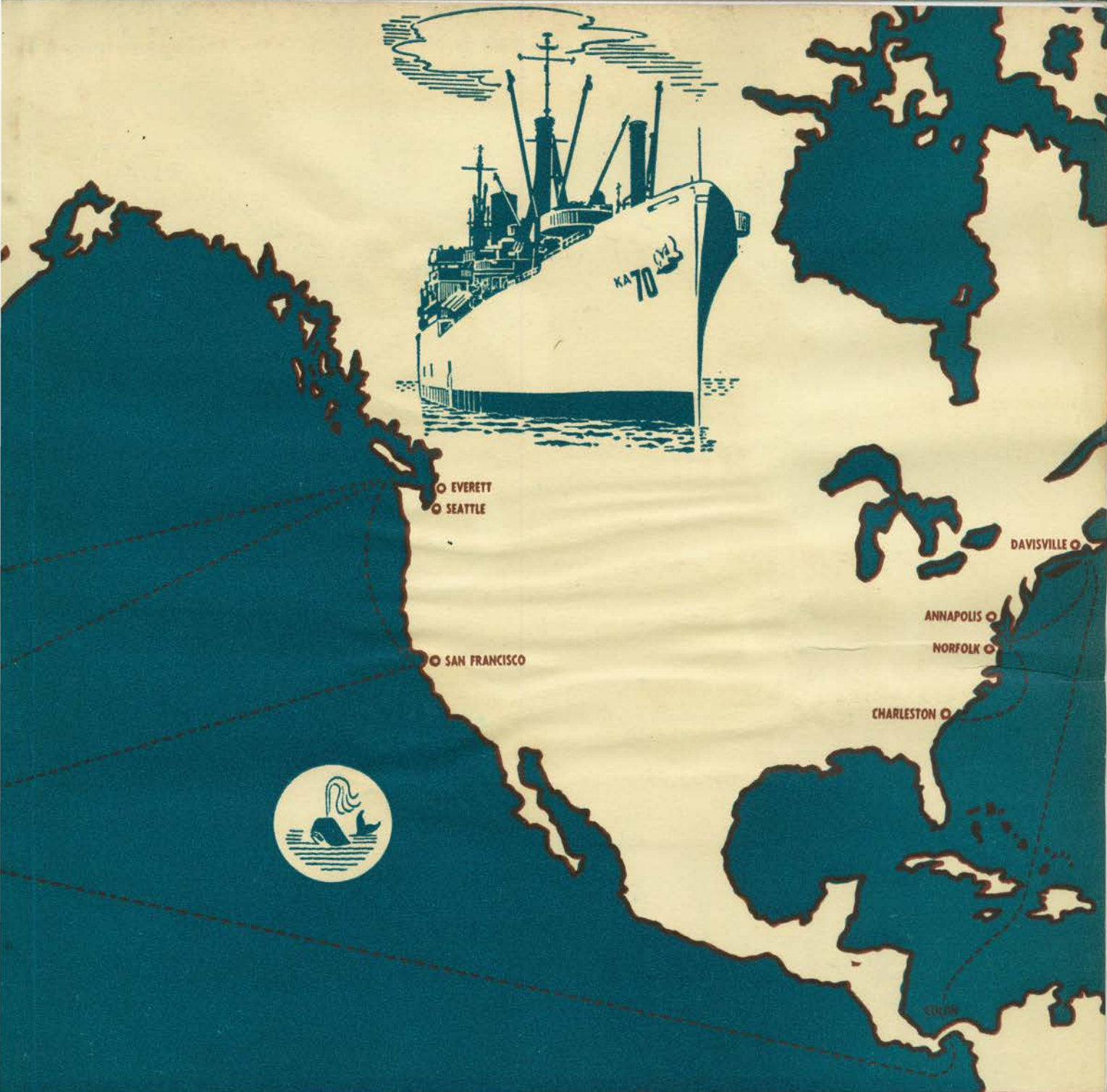
U. S. S.

TATE

(AKA-70)







## THE TRAVELS OF THE TATE FROM 25 NOVEMBER 1944 TO 12 DECEMBER 1945

ARRIVED	DEPARTED	ARRIVED	DEPARTED	ARRIVED	DEPARTED
Commissioned					
Charleston, South Carolina	25 November 1944	Okinawa, Ryukyu Islands	14 April	Hagushi Anchorage, Okinawa	5 September
Norfolk, Virginia	7 December	Ie Shima, Ryukyu Islands	16 April	Jinsen, Korea	13 September
Annapolis, Maryland	8 December	Okinawa, Ryukyu Islands	20 April	Hagushi Anchorage, Okinawa	18 September
Portsmouth, Virginia	15 December	Tinian, Marianas Islands	27 April	Nago Wan Anchorage, Okinawa	24 September
Davisville, Rhode Island	22 December	Salpan, Marianas Islands	28 April	Taku (Tientsin) China, Pohai Gulf	30 September
Colon, Republic of Panama	4 January 1945	EQUATOR	6 May	Manila, Luzon, Philippine Islands	13 October
Cristobal, Republic of Panama	6 January	Guadalcanal, Solomon Islands	9 May	Subic Bay, Luzon, Philippine Islands	17 October
Pearl Harbor, Oahu, T. H.	18 January	Florida, Gayuli, Tulagi, Solomon Islands	16 May	Manila, Luzon, Philippine Islands	18 October
Port Allen, Kauai, T. H.	29 January	Eniwetok, Marshall Islands	22 May	Cheungkwano Bay, China	25 October
Eniwetok, Marshall Islands	7 February	Guam, Marianas Islands	4 June	Kowloon and Hong Kong, China	25 October
Ulithi, Caroline Islands	13 February	Seattle, Washington	28 June	Cheungkwano Bay, China	26 October
Palau Islands	16 February	Everett, Washington	28 June	Chinwangtao, China	1 November
Leyte, Philippine Islands	21 February	Seattle, Washington	14 July	Kowloon and Hong Kong, China	9 November
Samar, Philippine Islands	22 February	San Francisco, California	21 July	Cheungkwano Bay, China	10 November
Leyte (Maneuvers)	3 March	Eniwetok, Marshall Islands	6 August	Tsingtao, China	15 November
Koruma Retto, Ryukyu Islands	26 March	Guam, Marianas Islands	14 August	Buckner Bay, Okinawa	25 November
Deployed off Okinawa	2 April	Ulithi, Caroline Islands	27 August	Seattle, Washington	12 December
		Buckner Bay, Okinawa, Ryukyu Islands	4 September	Manchester, Washington	12 December



CHARLESTON • NORFOLK • ANNAPOLIS  
PORTSMOUTH • DAVISVILLE • COLON  
CRISTOBAL • PEARL HARBOR  
PORT ALLEN • ENIWETOK • ULITHI  
PALAU • LEYTE • SAMAR • KERAMA RETTO  
OKINAWA • IE SHIMA • TINIAN • SAIPAN  
EQUATOR • GUADALCANAL • FLORIDA  
GAYUTI • TULAGI • SOLOMON • GUAM  
SEATTLE • EVERETT • SAN FRANCISCO  
RYUKYU • BUCKNER BAY  
HAGUSHI • JINSEN • NAGO WAN  
TAKU • TIENTSIN • MANILA  
LUZON • SUBIC BAY  
CHEUNGKWANO • KOWLOON  
HONG KONG • CHINWANGTAO  
TSINGTAO • MANCHESTER

BANDOR  
PUBLIC  
LIBRARY  
BANDOR, MICH.

---

# WAR-TIME LOG

*of the*

U. S. S.

# TATE

AKA - 70

---

25 NOVEMBER, 1944

to

12 DECEMBER, 1945

---



# ADONIS C. 2004 *Dedication*



**Commander R. E. LYON**

To our commanding officer whose wise leadership and human understanding will always remain in our memory as a shining example of a job well done.

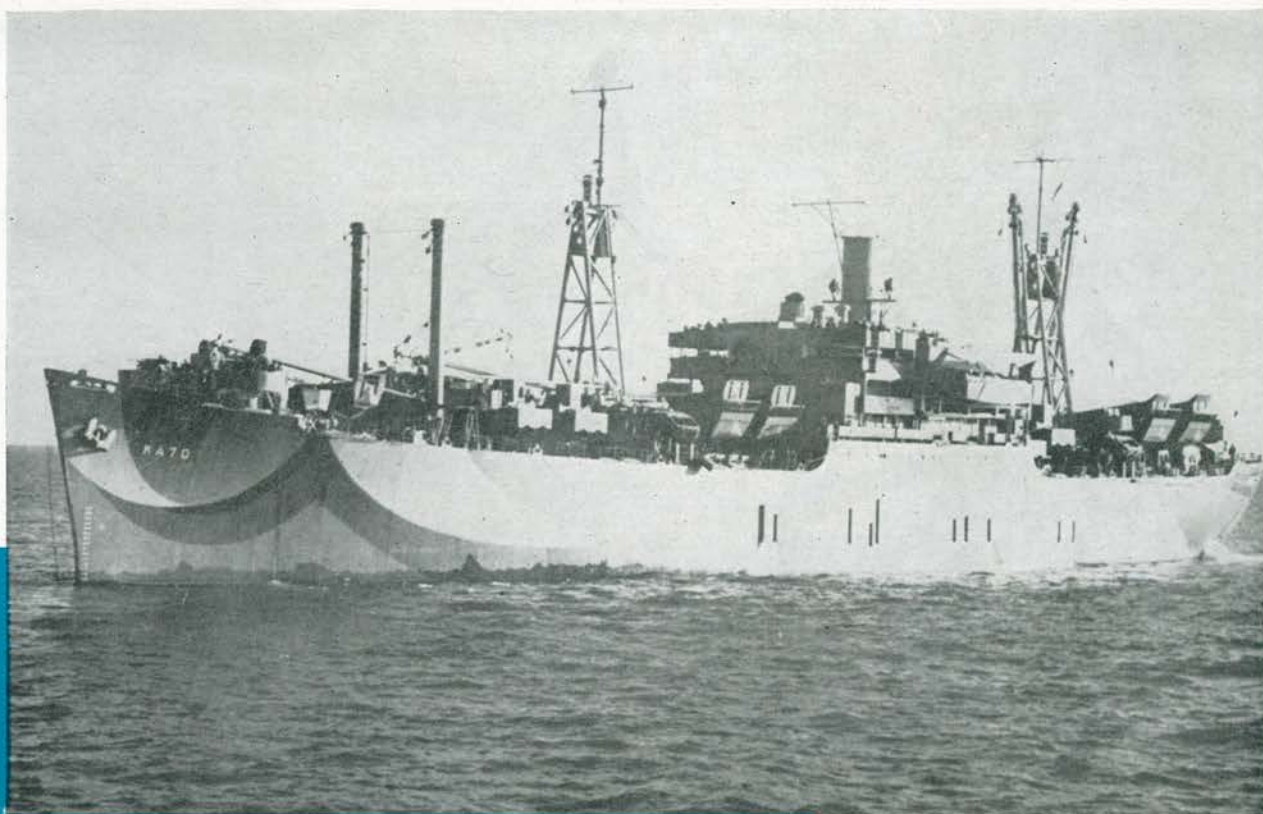


# Foreword

**B**ETWEEN THESE COVERS is preserved a record, in pictures and text, of life aboard the U.S.S. TATE during her war-time voyages, and of her many ports of call.

A good ship with a good crew, she carried us through many difficult situations and did her part with honor in a great war.

We shall never forget her.



## PORTRAITS



**Capt. WILLIAM JORDAN**

*The Tate's first commander*



**Lt. Cmdr.  
KELLS M. BOLAND**



**Lt. Cmdr. W. R. HALL**



# COMMISSIONING

5



**NOVEMBER 25  
1944**



At the Charleston Navy Yard, Charleston, South Carolina, on November 25th, 1944, the U.S.S. Tate (AKA-70) was placed in full commission.

Lieutenant Commander William Jordan assumed command.

The above picture shows the ship's company at salute during the commissioning ceremony.



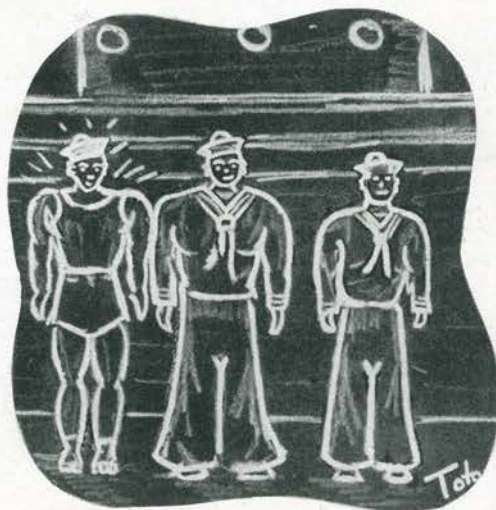


# COMMISSIONING



The commissioning ceremonies took place on the Tate only four months after her keel was laid (July 22, 1944) at Wilmington, North Carolina.

In the photograph interested spectators may be seen in the background and on a near-by vessel.



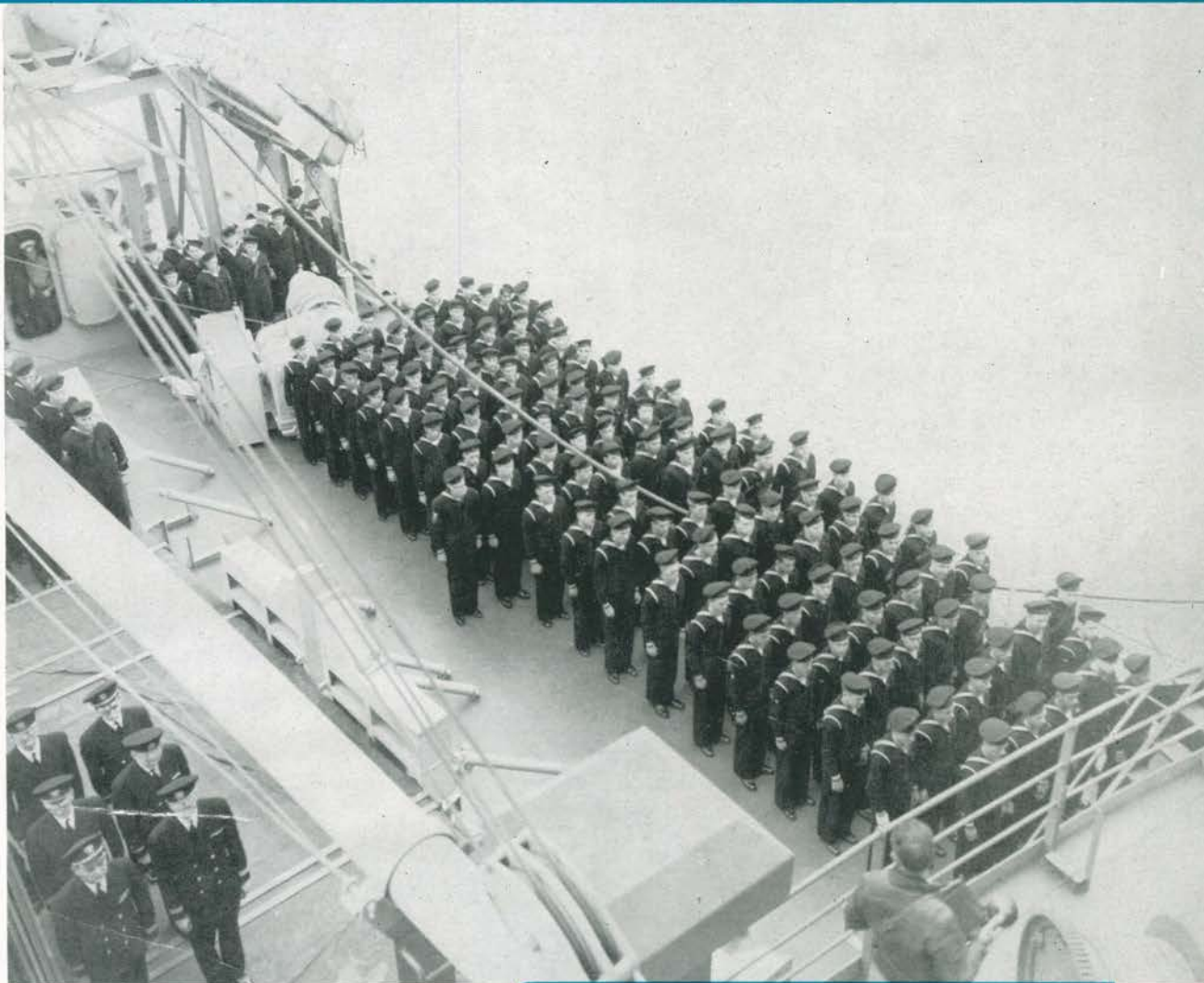
"But, sir, I got beat with four of a kind."

—Cartoon by Toto.



# COMMISSIONING

7



"Get me a red head."

—Cartoon by Toto.



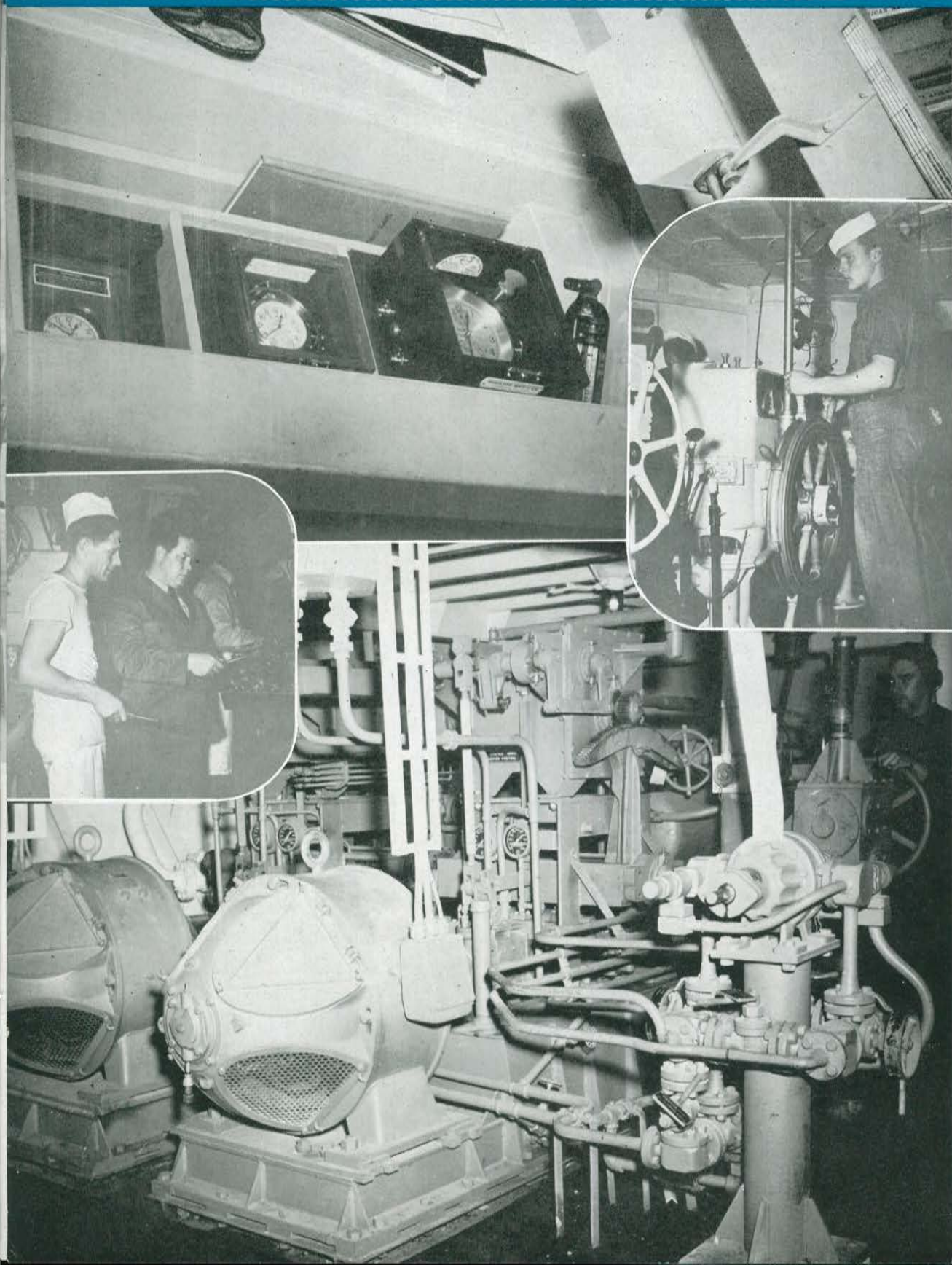
Above is seen the landing craft division of the U.S.S. Tate on the day of commissioning.

This group had been in training at the U.S. Naval Amphibious Training Base, Fort Pierce, Florida, since July.





# OPERATION





## ASSAULT EQUIPMENT

9

The pictures at right, reading down, show:

The "L" at the quarter boom  
LCVP-21 under way

"There will be a movie top-side tonight"

The 5 11/38

At lower left:

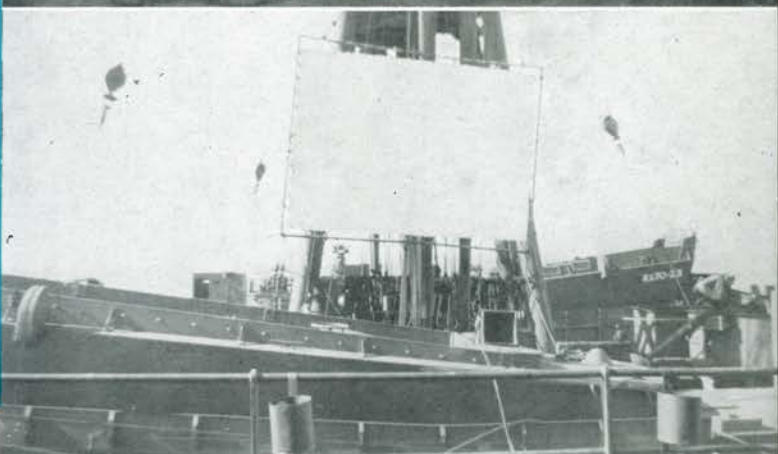
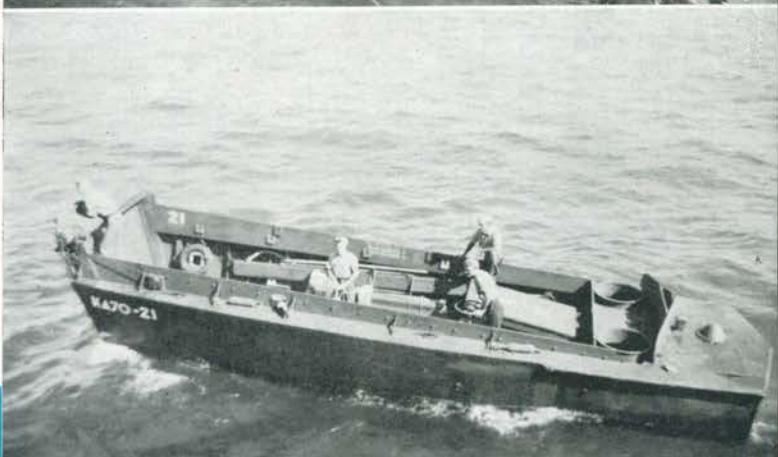
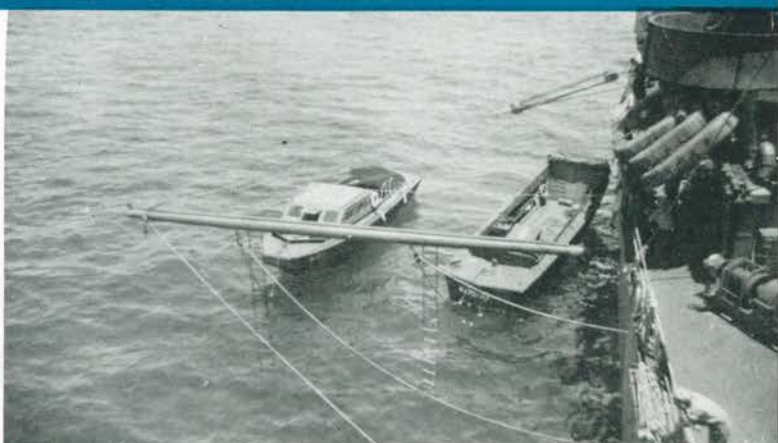
Adams at a forward twin "40"

On opposite page:

The upper picture shows the ship's chronometers; the lower presents a view of the steering engine.

Seen in the right inset is Raynor, QM 3/c at the wheel.

The left inset is a galley shot, "The ship travels on its stomach."







*Upper: Chiefs' mess*



*Lower left: Four gorillas.  
Cadell, Kerr, Grabowski  
and Josie*

*Lower right: Mr. Crew and  
port davit crews*



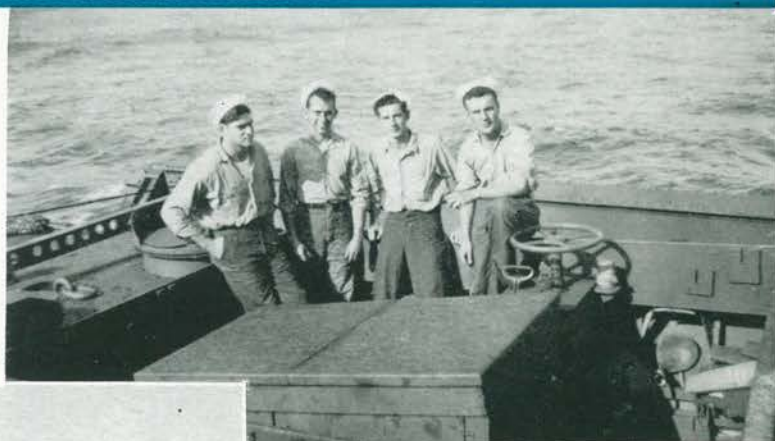


# PERSONNEL

*At right: Larsen and crew*

*Below: Maltzberger, the marine transport quartermaster*

*Center: Phillips*



*Above: Crew and Gerber*

*At left: Davis and Smallwood, Jones and Jordan*





An interested group at a movie in the mess hall heads this page.

At left center we see the out-board starboard davit boat.



The "Doc" and his patience occupy the center spot.

Small pictures below show a group of three engineers, and single shots of chief electrician Gilmore, Lt. (ig) Dalton, Lt. Steinman.





*"Why does the man on my right always hold  
my trumps?"*



Chief De Christoforo

A "nautical" sketch by TM 2/c  
Bernard Collins



Below:

"Punchy"

Dorsey and Waller

"Snipes"

A pleasant visit "Ding How"

Captain's Inspection





## HAWAIIAN and MARSHALL ISLANDS

### Oahu and Eniwetok

The Royal Hawaiian Hotel,  
Waikiki Beach,

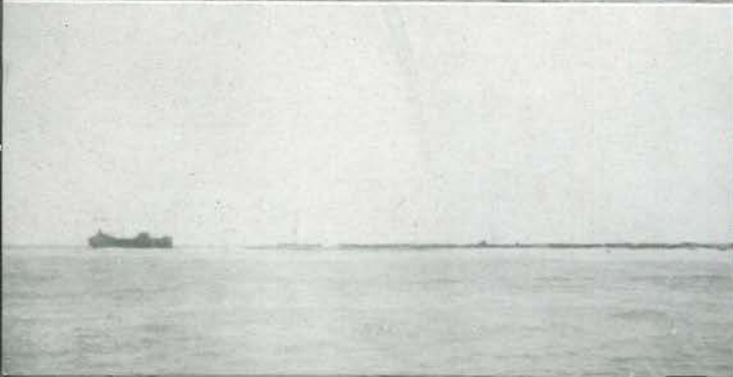
Oahu, Hawaiian Islands



### Eniwetok Atoll

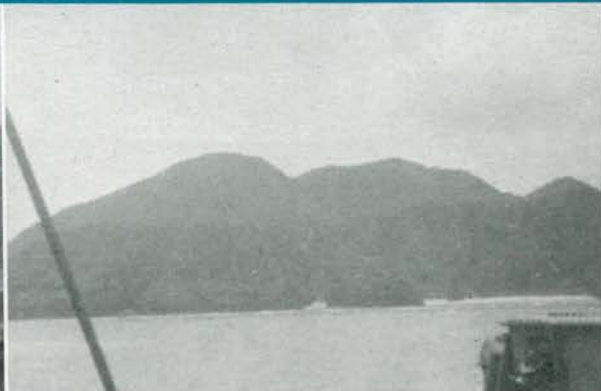


### Sunken Jap ship, Eniwetok Atoll



### Stranded tanker Perry Island, Eniwetok Atoll



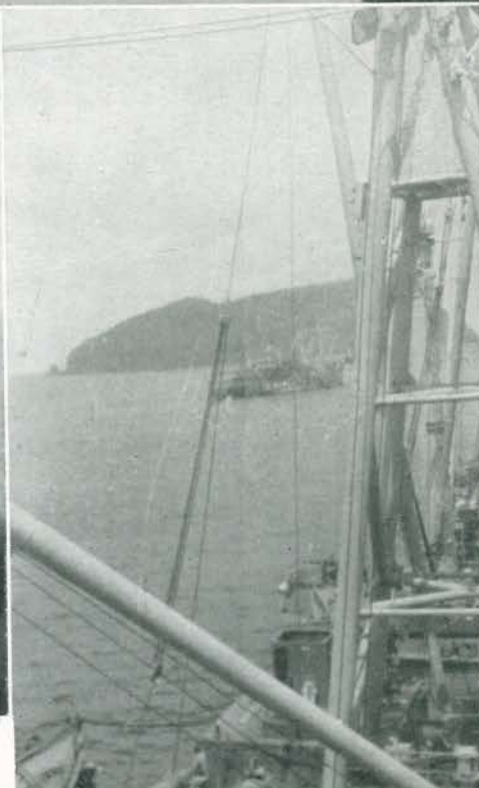


## KERAMA RETTO and OKINAWA

### Ryukyu Islands

Ensign Waller reviews the  
fleet.

CL-Birmingham, Ie Shima.



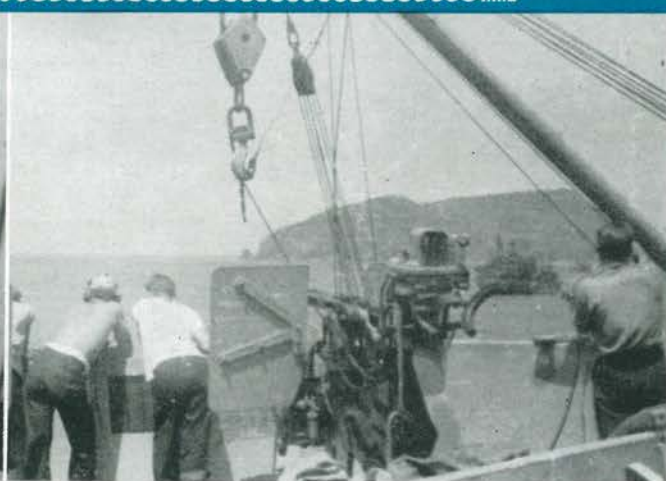
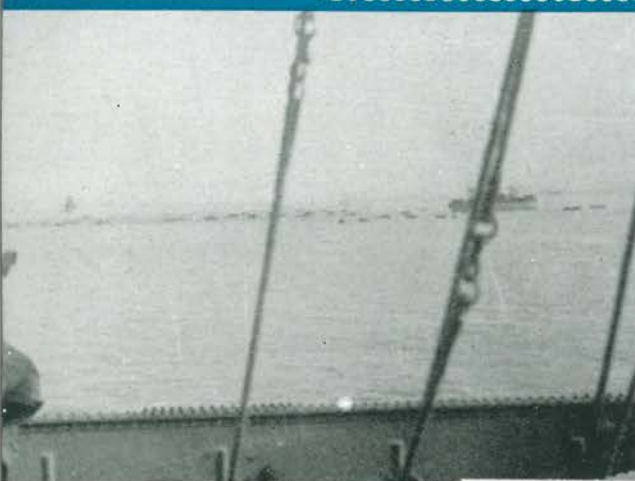
*Upper left:* Kobe Shima, Kerama Retto, Ryukyu Islands.

*Upper right:* Zamami Shima, Kerama Retto, Ryukyu Islands.

*Right center:* Yokaba, Kerama Retto.

*Lower right:* Heavy cruiser off Okinawa.





## IE SHIMA and OKINAWA

*At upper left is a view of an assault wave circling off the U.S.S. Sarasota (APA-204) off Ie Shima.*

*Upper right: Yakaba Shima, Kerama Retto.*

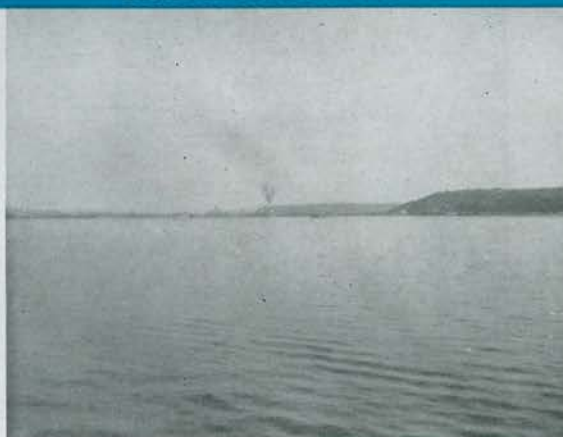
*Left center: A spotter plane of the 77th Infantry Division, Ie Shima.*

*Center: Anti-aircraft cruiser off Ie Shima.*



Tate launches plane





## GUAM

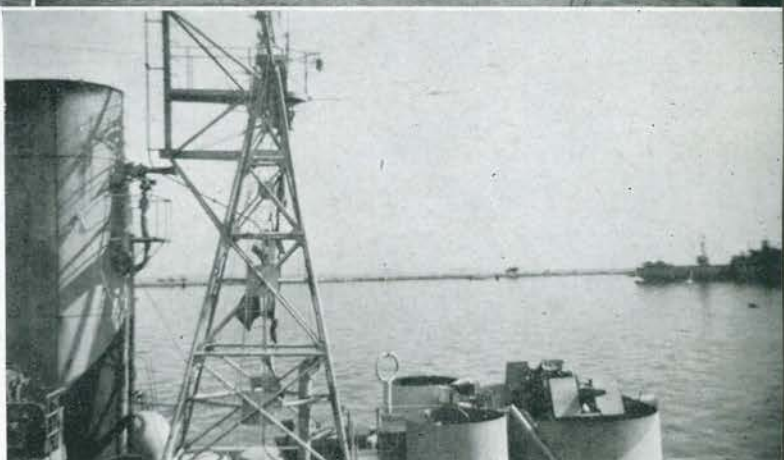
Apra Harbor, Guam

Apra Harbor, Guam. U.S.S. New Jersey  
in background

Breakwater, Apra Harbor, Guam

U.S.S. Sperry (AS-12) with subs in from  
patrol, Guam

Navy tug, Guam



Hula-Hula Girl

Drawn by TM 2/c Bernard Collins





King Neptune boarded the Tate as she crossed the "line." He held court in royal style as the pictures on this and the next two pages testify.

*Upper left: Davey Jones and the Princess*

*Upper right: The royal operating table*

*At left: reading down:  
The royal "line up"  
Gold braid  
The mutineers*







On the look-out for Davey Jones



At right, reading down:

Shellbacks

Royal operating table

Voight and Murray

Below: He didn't get took — or R.H.I.P.





THE "DRINK"

Upper row:

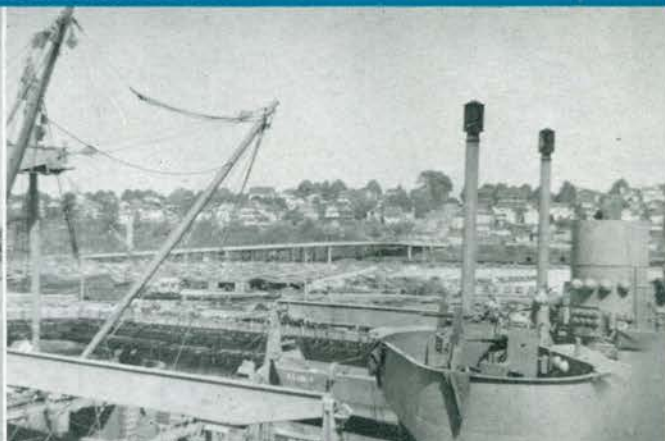
The royal barber chair

He was a devil

Hoerske, Waller and  
Schonfeld

The royal dentist greases up for an extraction





## EVERETT and SEATTLE, WASH.

*Just like Home!*

Upper left:

Everett Pacific Shipyard

Upper right:

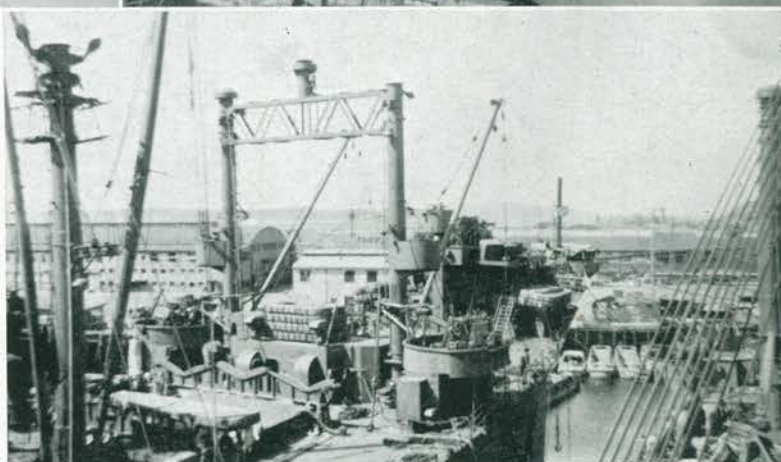
The road to town

At right, reading down:

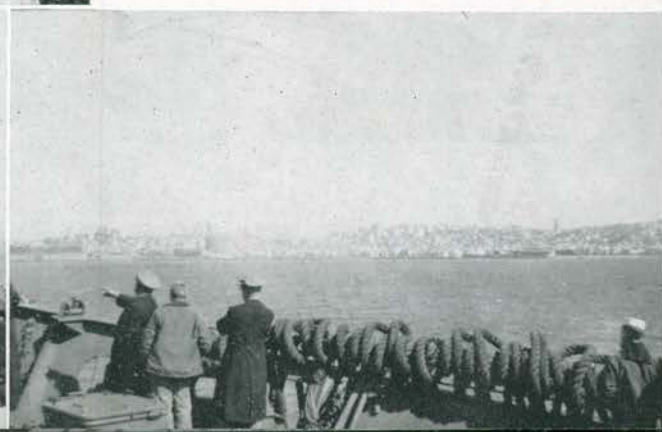
Alongside the "Elmore" (APA-42) Everett

Everett waterfront

At Seattle







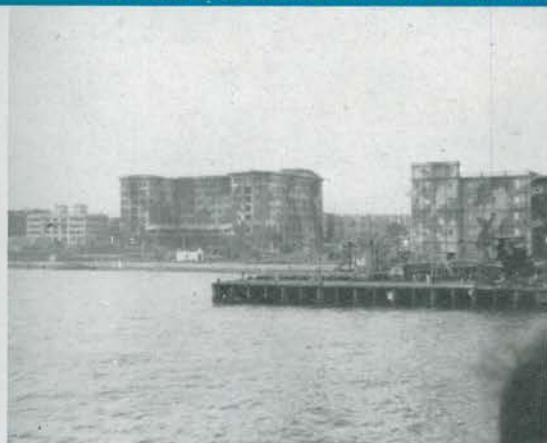
## "FRISCO"

Entering magnificent San Francisco Bay the Tate sailed under Golden Gate Bridge and past "The Rock" (Alcatraz).

San Francisco's skyline presented a wonderful panorama to all on board. These were home waters and a friendly "port of call."

Other pictures on this page show the Mile Rock Lighthouse and interested personnel as the ship proceeds into San Francisco Bay.





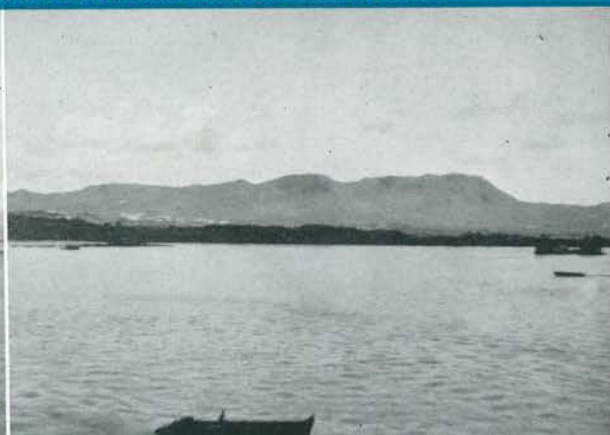
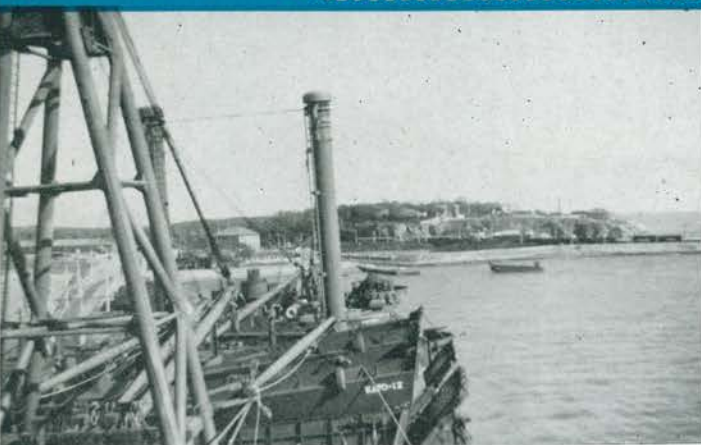
## KOWLOON *and* HONGKONG, CHINA

The three upper pictures were taken at Kowloon. Here, and at Hongkong, the Tate assisted in the transportation of Chinese troops of the Nationalist armies to Chinwangtao and Tsingtao.



Views of the famous island of Hongkong, China.





## CHINWANGTAO *and* TSINGTAO, CHINA

*Above:* St. Michael's Cathedral, Tsingtao.

*Top row:* Chinwangtao.

*At left:* Overlooking APA-68, Chinwangtao. At Tsingtao. U.S.S. Antietam in background. Off Tsingtao.





## PHILIPPINES

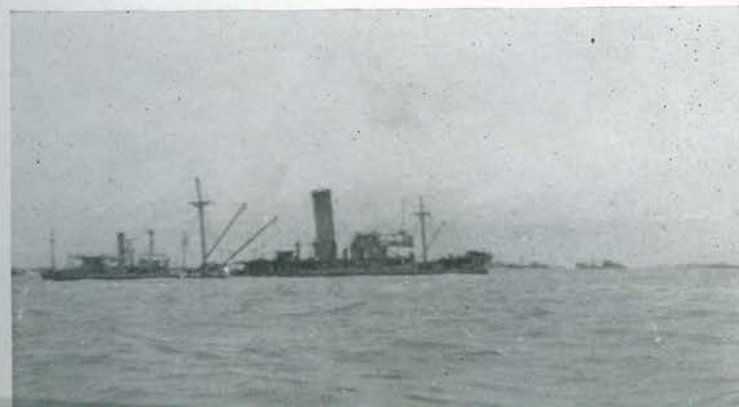
Manila Bay and the city of Manila presented a scene of devastation.

Shown here are sunken Japanese ships in the bay and Jap landing barges on the beach.

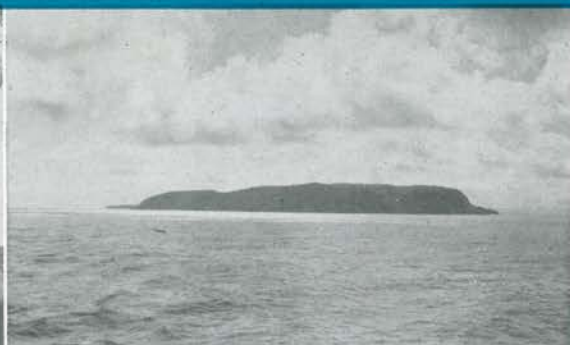
At the lower right is a view of the fleet landing.

Street scenes in Manila show the destruction of buildings. Every public building in the city was either damaged or destroyed.

The center picture at right shows a section of the walled city.







## MANILA and SAMAR

### Top row:

We walked around the rubble in the streets of Manila.  
A native home on the island of Samar in the Philippines.  
The fortress isle of Corregidor seen in silhouette.

### Center:

A native village on Samar.

### At left:

Taxi service among the shelters of the homeless. Manila.  
A war-swept city. Manila.







Above:

Golden Gate Bridge.

Upper right:

Eastlund, Schonfeld, Yaeger.

In the center group of pictures are four views of Chinese troops on board the Tate. Also three views of units of the British fleet at Hongkong.



Bottom row, left to right:

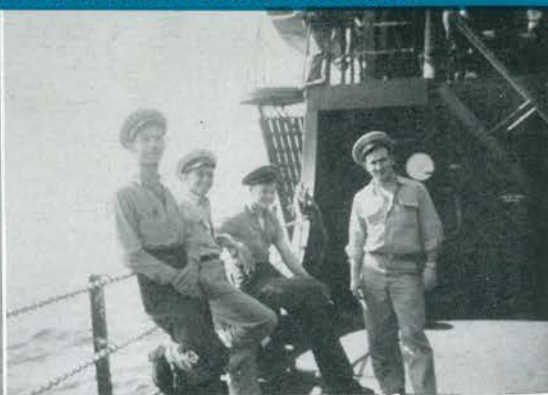
Chinese troops.

Burial at sea.

Preparation for burial.







*Upper left:*

Our Chief Petty Officers.

*Upper right:*

CPO's Gross, Johnson, a passenger and Wallace.

*Center:*

"What do you see?"

*At left:*

CPO's Weidner and Johnston.

CPO La Velle.

CPO's De Christoforo, Weidner, Gross, Wallace and Johnston.







Above:

Homeward bound.

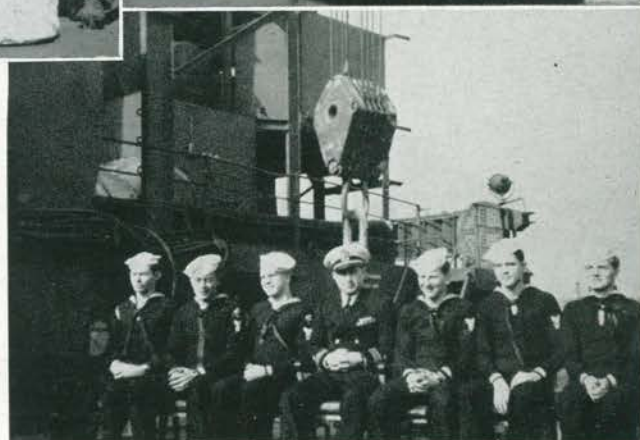
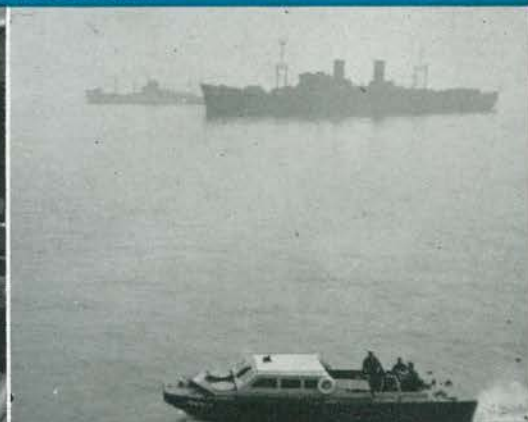
At right, reading down:

The "L" at sea.

The "Exec" and the yeomen.

Just "tootin' away." Lots of practice  
wouldn't do any harm.

Waikiki Beach, Honolulu.

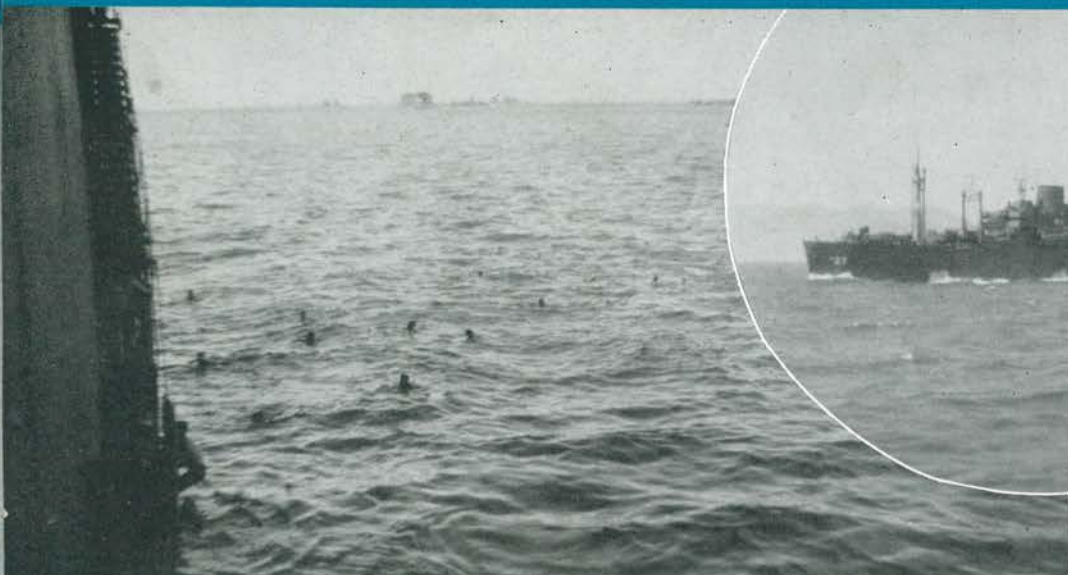


"Throw me those old shoes."

—Cartoon by Toto.







*At left, reading down:*

Ye Olde Swimming Hole. Ulithi Atoll.

Wardroom at chow time.

Buckner Bay, Okinawa.

*In circle:*

U.S.S. Samuel Chase (APA-27).  
Leyte Gulf.

#### ENEMY HELD OR SEMI-OCCUPIED AREAS WHERE THE TATE OPERATED

##### I. Philippine Islands

- A. Samar
- B. Leyte

##### II. Ryukyu Islands

###### A. Kerama Retto

1. Aka Shima
2. Yakabi Shima
3. Kuba Shima
4. Geruna Shima
5. Zamami Shima
6. Hoka'i Shima
7. Ijakasa Shima
8. Keise Shima
9. Takashiki Shima
10. Amuro Shima
11. Tonaki Shima

###### B. Okinawa Gunto

1. Ie Shima



## U.S.S. TATE (AKA-70)

**T**HE KEEL of the U.S.S. TATE (AKA-70) was laid 22 July 1944 in the yard of the North Carolina Shipbuilding Company, Wilmington, North Carolina.

On the same day, in Newport, Rhode Island, the first member of the crew assigned to the U.S.S. TATE Pre-commissioning Detail reported for duty at the Naval Training Station. Simultaneously, at the U.S. Naval Amphibious Training Base, Fort Pierce, Florida, the Landing Boat Group was in training. These three elements were joined on 25th November 1944, when the U.S.S. TATE was placed in full commission at the Charleston Navy Yard, Charleston, South Carolina. Lieutenant Commander William JORDAN assumed command.

The development and activity of the U.S.S. TATE followed in general the program designed for transport and cargo assault vessels. The Shakedown Cruise in Chesapeake Bay occupied the first two weeks of December, when firing tests, speed tests, and other training exercises were conducted. On December 16th Lieut.-Comdr. R. E. LYON relieved Lieut.-Comdr. William JORDAN as Commanding Officer and the ship sailed several days later on its first assignment, to Davisville, Rhode Island, to load general cargo for Pearl Harbor, T. H.

The U.S.S. TATE left Davisville, and the United States, on a cold December morning and set her course for the Canal Zone and the troubled skies and waters of the Pacific. After a brief stop at Cristobal, and another at Pearl Harbor and Port Allen, Kauai, T. H., for discharging and loading cargo, and personnel, the ship sailed for Eniwetok, in the Marshall Islands. There she met her sister ships of transport Squadron 17, with whom she was to share so many adventures. In February, in convoy for the first time, she sailed for Leyte Gulf, P. I. On 22 February 1945, after stops in Ulithi, Caroline Islands, and Kessel Roads, Palau Islands, the U.S.S. TATE arrived in Leyte Gulf from which point she proceeded to Samar, P. I., to discharge cargo and personnel. It is to be noted that exactly seven months after her keel was

laid, and less than three months after commissioning, the ship was completing its first mission in the forward area—her second wartime mission.

In March and April, the U.S.S. TATE trained for and participated in the Amphibious Operation for the capture of the Okinawa Gunto. She was combat loaded off Tarraguna, Leyte, with personnel and equipment of the U. S. Army 77th Infantry Regiment. On the 21st of March she sailed as a unit of the Western Islands Attack Group, Rear Admiral KILAND in command, for the assault and capture of the Kerama Retto, a small group of Islands to the South and West of Okinawa. Landing craft and personnel of this vessel participated in the invasions and subsequent transportation of personnel and supplies to the beaches of AKA SHIMA, KUBA SHIMA, YAKABI SHIMA and ZAMAMI SHIMA. All operations were successfully completed, and the ships withdrew to a waiting area.

Three weeks later the U.S.S. TATE was again participating in the assault and capture of an enemy island: IE SHIMA, where the famous war correspondent, Ernie Pyle, was killed. From 16-22 April her small boats successfully carried personnel, ammunition, and cargo to the beachheads.

After 28 days in the Okinawa area, the U.S.S. TATE withdrew to quieter waters. During these four weeks she had been subjected to attacks by enemy aircraft, submarines, and suicide boats. Enemy suicide planes struck vessels ahead and abeam of her position in formation, and an escort vessel was exploded and sunk.

On less strenuous duty, the ship sailed to Saipan, Marianas Islands, and from there to Guadalcanal, Solomon Islands, where she loaded marine personnel and cargo for Guam. In June she set her course from Guam for the United States, and arrived in Seattle, Washington. After a short yard availability, she sailed once again with a load of personnel and cargo, via San Francisco, where she took aboard a full complement of landing craft, for Guam. There, only a few hours after arrival, the news

of the Japanese offer of surrender was announced, and with it, the war time cruise of the U.S.S. TATE came to an end.

Subsequent to the Japanese surrender, the ship has been as fully employed as ever before. The duties were of an occupational nature whereby we participated in the transportation of AsCom 24, army occupation troops, to Jinsen, Korea, and the 1st Marine Division to Tientsin, China. The base of operations in both cases was Okinawa.

During the above operations we encountered two typhoons which gave us a first hand knowledge of the power of wind and sea. The second one which caught us off Okinawa in the East China Sea was one of the most destructive and severe storms in the Pacific. We had the misfortune to lose two boats: number 6-LCM and number 14-LCVP.

After a short stay in Manila on Luzon Island in the Philippines we proceeded to Kowloon and Hong Kong where we assisted in the transportation of the 13th and the 8th Chinese Nationalist Armies to Chinwangtao and Tsingtao, respectively.

We passed through the extended mine field in the East China Sea-Yellow Sea area eight times without mishap. We never failed to see mines so our gunners as well as those on our escorts were able to have a great deal of target practice. The field consisted of 12,500 mines planted by our air forces in Japanese sea lanes as well as Japanese horned mines laid as an inducement to keeping our ships from her west coast area.

We arrived in Seattle on 12 December after a one day stop in Okinawa to complete our load of troops scheduled for discharge and return to civilian life.

The U.S.S. TATE had completed one year, one half month of active duty in full commission. In this period she has traveled approximately 60,000 miles, carried a total of over 18,000 tons of cargo, much of it combat loaded, carried over 4000 troops, expended 2,471 rounds of ammunition in action against the enemy, successfully traversed many mine fields, and anchored in smoke screens made by her own boats a total of 64 hours to evade enemy detection.



# SHIPS OPERATED WITH

**W**HILE on active duty in the Pacific we have operated in close harmony and in company with the following ships, either in convoy units or in actual combat operations.

U.S.S. CHILTON (APA-38)	U.S.S. LENOIR (AKA-74)	U.S.S. LSM-417
U.S.S. HENRICO (APA-45)	U.S.S. VALENCIA (AKA-81)	U.S.S. LSM-(L)-47
U.S.S. EFFINGHAM (APA-165)	U.S.S. COLQUITT (APA-174)	U.S.S. DAMON M. CUMMINGS (DE-643)
U.S.S. ATTALA (APA-130)	U.S.S. LUMEN (AKA-30)	U.S.S. RAYMOND (DE-341)
U.S.S. HANOVER (APA-116)	U.S.S. VENAGO (AKA-83)	U.S.S. HOLTON (DE-703)
U.S.S. BUTTE (APA-68)	U.S.S. SAMUEL CHASE (APA-26)	U.S.S. FRYBARGER (DE-705)
U.S.S. DEVOSA (AKA-27)	U.S.S. ACHERNAR (AKA-53)	U.S.S. DONALD WOLF (APD-129)
U.S.S. LEON (APA-48)	U.S.S. GOODHUE (APA-107)	U.S.S. AMESBURY (APD-46)
U.S.S. CORTLAND (APA-75)	U.S.S. EASTLAND (APA-163)	U.S.S. AHRENS (DE-575)
U.S.S. GENEVA (APA-86)	U.S.S. TELFAIR (APA-210)	U.S.S. E. V. JOHNSON (DE-702)
U.S.S. CRESCENT CITY (APA-21)	U.S.S. MONTRAIL (APA-213)	U.S.S. CRONIN (DE-704)
U.S.S. SIRONA (AKA-43)	U.S.S. MONTROSE (APA-212)	U.S.S. WERBER (APD-75)
U.S.S. TROUSDALE (AKA-79)	U.S.S. KENTON (APA-122)	U.S.S. ACREE (DE-356)
U.S.S. RANDELL (APA-224)	U.S.S. LA GRANGE (APA-124)	U.S.S. PARLE (DE-708)
U.S.S. BERGEN (APA-150)	U.S.S. WYANDOTTE (AKA-92)	U.S.S. CONKLIN (DE-439)
U.S.S. COLLINGSWORTH (APA-146)	U.S.S. NATRONA (APA-214)	U.S.S. MCCOY REYNOLDS (DE-440)
U.S.S. CRENSHAW (APA-76)	U.S.S. ST. MARY'S (APA-126)	U.S.S. GLADIATOR (AM-319)
U.S.S. BURLESON (APA-67)	U.S.S. TAZEWEEL (APA-209)	U.S.S. IMPECCABLE (AM-320)
U.S.S. MONTAGUE (AKA-98)	U.S.S. OBERON (AKA-14)	U.S.S. JACCARD (DE-335)
U.S.S. CASEWELL (AKA-72)	U.S.S. TORRANCE (AKA-76)	U.S.S. SEDERSTROM (DE-31)
U.S.S. LAVACA (APA-180)	U.S.S. LYCOMING (APA-155)	U.S.S. FLEMING (DE-32)
U.S.S. BRISCOE (APA-65)	U.S.S. NESHOPA (APA-116)	U.S.S. EISELE (DE-34)
U.S.S. CULLMAN (APA-78)	U.S.S. CORVUS (AKA-26)	U.S.S. RICHARD W. SIESENS (DE-342)
U.S.S. CLEERFIELD (APA-142)	U.S.S. TYRRELL (AKA-80)	U.S.S. ABERCROMBIE (DE-343)
U.S.S. SHERIDAN (APA-51)	U.S.S. VIRGO (AKA-20)	U.S.S. OBERRENDER (DG-344)
U.S.S. SKAGIT (AKA-105)	U.S.S. TETON (AGC-14)	U.S.S. STERN (DE-187)
U.S.S. ARCTURUS (AKA-1)	U.S.S. MT. McKINLEY (AGC-7)	U.S.S. PICKING (DD-685)
U.S.S. MONROVIA (APA-31)	U.S.S. CATOCTIN (AGC-2)	U.S.S. SPROSTON (DD-577)
U.S.S. WARREN (APA-53)	U.S.S. BLUE RIDGE (AGC-5)	U.S.S. WILLIAM D. PORTER (DD-579)
U.S.S. FULLER (APA-7)	U.S.S. CEBU (ARG-6)	U.S.S. YOUNG (DD-580)
U.S.S. LA CERTA (AKA-29)	U.S.S. CLAMP (ARS-33)	U.S.S. ISHERWOOD (DD-520)
U.S.S. MELLENA (AKA-32)	U.S.S. RIXEY (APH-3)	U.S.S. KIMBERLY (DD-521)
U.S.S. DREW (APA-162)	U.S.S. ATHASIA (F-41)	U.S.S. CHARLES J. BADGER (DD-657)
U.S.S. SUFFOLK (AKA-69)	U.S.S. LST-813	U.S.S. LUCE (DD-522)
U.S.S. SARASOTA (APA-204)	U.S.S. LST-814	U.S.S. WALTER C. WANN (DE-412)
U.S.S. DEVOSA (AKA-27)	U.S.S. LSM-321	U.S.S. DICKERSON (APD-21)
U.S.S. OKANOGAN (APA-220)	U.S.S. LST-876	U.S.S. LAFFEY (DD-724)
U.S.S. GOSHEN (APA-107)	U.S.S. LCI-789	U.S.S. PORTERFIELD (DD-682)

**W**E WISH to extend our sympathy to the crews of the above ships that have suffered losses while in combat areas through enemy action. We admire you and the things you have done. It is with sincere regret that we have learned of your misfortune.

The following is a list of those ships damaged; the first four of whom were sunk:

U.S.S. LUCE (DD-522)  
U.S.S. WILLIAM D. PORTER (DD-579)  
U.S.S. OBERRENDER (DE-344)  
U.S.S. DICKERSON (APD-21)

U.S.S. HENRICO (APA-45)  
U.S.S. CHILTON (APA-38)  
U.S.S. GOODHUE (APA-107)  
U.S.S. TELFAIR (APA-210)  
U.S.S. ACHERNER (AKA-53)  
U.S.S. TYRRELL (AKA-80)  
U.S.S. WYANDOTTE (AKA-92)  
U.S.S. KIMBERLY (DD 521)

U.S.S. LAFFEY (DD-724)  
U.S.S. PORTERFIELD (DD-682)  
U.S.S. CONKLIN (DE-439)  
U.S.S. DAMON M. CUMMINGS (DE-643)  
U.S.S. WALTER C. WANN (DE-412)  
U.S.S. SIMS (APD-50)  
U.S.S. GLADIATOR (AM-319)



## ROSTER OF OFFICERS

LYON, R. E.	Comdr.	CONWELL, O. F.	Lt. (jg)
JORDAN, WILLIAM	Lt. Comdr.	CREW, L. A.	Lt. (jg)
BOLAND, K. M.	Lt. Comdr.	DORSEY, A. "H" "H"	Lt. (jg)
HALL, W. R.	Lt. Comdr.	FORREST, B. W.	Lt. (jg)
HEINAN, C. F.	Lt. Comdr.	VAINDER, M. V.	Lt. (jg)
BUTE, G. T.	Lieut.	HOFELD, J. R.	Lt. (jg)
NEBLETT, J. E., Jr.	Lieut.	CAPE, GEORGE	Ens.
PROPECK, B. O.	Lieut.	KEPFORD, R. M.	Ens.
BESSOM, W. H.	Lieut.	BLUNK, M. F.	Ens.
YAEGER, G. W.	Lieut.	PARKER, G. S., Jr.	Ens.
STEINMAN, E. A.	Lieut.	EASTBUND, E. V.	Ens.
PHILLIPS, J. E.	Lieut.	EWING, J. R.	Ens.
MORRIS, G. W.	Lt. (jg)	WALLER, D. M.	Ens.
SCHONFELD, ALVIN	Lt. (jg)	GEPHART, W. F.	Ens.
GUTOWSKI, E. J.	Lt. (jg)	HEMSATH, E. R.	Ens.
HOERSKE, P. H.	Lt. (jg)	MURRAY, W. D.	Ens.
VOIGHT, O. L.	Lt. (jg)	HERTER, C. J.	Ens.
MAHLER, J. H.	Lt. (jg)	OTTO, F. F.	Ens.
CASLOW, L. A.	Lt. (jg)	STEWART, W. M.	Ens.
LYTTON, E. J., Jr.	Lt. (jg)	MALTZBERGER, D.	2nd Lt., USMCR
ORR, I. W.	Lt. (jg)	ROBINSON, A. T.	Ch. Mach.
DALTON, J. F.	Lt. (jg)	GILMORE, W. E.	Ch. Elect.
LEAHY, P. R.	Lt. (jg)	JEFFERS, FRED	Ch. Carp.
CARTER, L. J.	Lt. (jg)	SENKOWSKI, F. W.	Bos'n
GERBER, C. E.	Lt. (jg)	GOSSUM, R. E.	Pay Clerk
JOSLYN, A. L.	Lt. (jg)	TILLEY, M. W.	Elect.
		FICERE, J. F.	Mach.

## ENLISTED MEN

<b>A</b>		BALL, W. O.	MM2/c	BORENSKI, J. F.	MM2/c
ACREE, J. W.	RdM3/c	BARBEE, H. W.	S1/c	BOSARGE, W. J.	S1/c
ADAMS, A. R.	MoMM2/c	BARCHARD, K. A.	S1/c	BOSTIC, J. C.	SF2/c
ALBRIGHT, W. G.	MoMM2/c	BARNES, B. D.	Y2/c	BOULANGER, J. X.	MoMM3/c
ALEXANDER, C. E.	S1/c	BARRETT, R. D.	S1/c	BOYD, L. R.	MoMM2/c
ALSTON, G. L.	S12/c	BARTON, J. M.	MoMM3/c	BRANNIN, E. E.	CMM
AMBROSE, C. G.	MM2/c	BASKIN, K. G.	GM3/c	BRAXTON, S. O.	CEM
ANDERS, J. C.	F1/c	BECKER, H.	BM2/c	BREDEHOFT, R. E.	SC(B)3/c
ANTHONY, J. W.	CM3/c	BELKO, L. J.	Y2/c	BRIGGS, R., Jr.	S1/c
ATKINS, C. E.	BM2/c	BERTSCH, H.	F1/c	BROCKERT, W. J., Jr.	S1/c
ATKINS, T. M.	RdM3/c	BLAKELY, J. B.	SM3/c	BROWN, A. O.	Cox.
ATTARDI, S.	S1/c(SC)	BLANTON, J. C.	S1/c	BROWN, A. E.	Cox.
		BLEVINS, B.	CK1/c	BROWNING, C. R.	BM1/c
<b>B</b>		BLOOMFIELD, G. C.	RT1/c	BUEGHLY, W. A.	MMR1/c
BAERT, A. J.	BM2/c	BOATMAN, E. F.	CBM	BURGOYNE, H. H.	WT3/c
BAGLEY, D. C.	GM1/c	BOEHMAN, C. L.	RdM3/c	BURK, G. E.	MM2/c
BAKER, J. K.	MM3/c	BOLDEN, W. N.	EM2/c	BUSCH, S. E.	Cpl(USMC)
BALL, N. N.	EM2/c	BOND, E. H.	F1/c	BUSS, E. W.	CPhM
		BONNIWELL, G. R.	S1/c	BUSWELL, M. J.	MM2/c
		BOOKER, D. M.	Cox.		



## SHIP'S ROSTER

## C

CADDELL, T. N. .... BM2/c  
 CAPRONI, A. J. .... SK2/c  
 CAREY, E. C. .... S1/c  
 CARMEAN, M. L. M. .... MoMM3/c  
 CARR, D. A. .... MoMM2/c  
 CARROLL, J. E. .... Cox.  
 CARTNER, H. M. .... Cox.  
 CAUDILL, C., Jr. .... EM3/c  
 CAVANAUGH, R. L. .... Y2/c  
 CECIL, I. E. .... MoMM2/c  
 CHILDRESS, H. L., Jr. .... EM2/c  
 CHIRDON, A. J. .... S1/c  
 CHOATE, W. J. .... HA1/c  
 CHURCHICH, S. .... RdM3/c  
 CLARK, H. L. .... RdM3/c  
 CLARK, P. J. .... MM2/c  
 CLEMENTS, G. J. .... MoMM3/c  
 COBB, T. .... SiM2/c  
 COLE, R. J. .... MoMM3/c  
 COLEMAN, L. W., Jr. .... WT2/c  
 COLLEY, H. C. .... MoMM2/c  
 COLETTA, A. .... S1/c  
 COLLINS, B. .... SiM2/c  
 COMSTOCK, R. M. .... GM3/c  
 CONGER, E. H. .... S1/c  
 CONLEY, D. H., Jr. .... BM1/c  
 CONTINE, S. J., Jr. .... MoMM2/c  
 COOMER, J. A. .... SF1/c  
 COOMER, O. "E." .... MM2/c  
 CORNELINI, G. A. .... RM3/c  
 CORL, J. B. .... S1/c  
 COSLETT, A. S. .... QM1/c  
 CRAIG, D. F. .... RM3/c  
 CRAYTOR, L. B. .... CM1/c  
 CRONIN, J. J., Jr. .... BM2/c  
 CUMMINGS, D. W. .... Cox.  
 CUSHING, E. R. .... BM2/c  
 CUSTIS, T. E. .... MaM2/c  
 CUSTY, J. E. .... MoMM3/c

## D

DALTON, H. G. .... MoMM2/c  
 DAMMANN, E. H. .... CM  
 DAUM, C. V., Jr. .... MoMM2/c  
 DAVIES, G. R. .... CSF  
 DAVIS, C. L. .... MoMM3/c  
 DAVIS, J. C. .... MM1/c  
 DAVIS, W. A. .... S1/c  
 DE BAUM, C. E. .... CEM  
 DE CRISTOFORO, J. C. .... CCM  
 DESSLER, M. J. .... MoMM3/c  
 DENNER, F. W. .... MM3/c

DE PAUW, L. V. .... GM2/c  
 DITRICH, J. L. .... GM3/c  
 DION, G. C. .... F1/c  
 DIXON, J. C. .... FC1/c  
 DRAKE, W. T. .... WT2/c  
 DUBIE, R. R. .... GM3/c  
 DUDA, J. .... S1/c  
 DURHAM, C. M. .... SM3/c  
 DYKE, E. R. .... MM2/c

## E

EARNHARDT, Jr., J. H. .... S1/c  
 EDENS, F. E. .... SC1/c  
 EDGE, K. .... RdM3/c  
 ELDER, E. G. .... SiM1/c  
 ELLINGSON, D. M. .... S1/c  
 ELLINGER, Jr., E. J. .... S2/c

## F

FAGAN, G. A. .... CQM  
 FAGGART, S. L. .... S1/c  
 FARIS, C. T. .... SK2/c  
 FAULKNER, C. E. .... S1/c  
 FERGUSON, L. A. .... MM3/c  
 FILLIS, L. A. .... S1/c  
 FINN, W. J. .... Y2/c  
 FISHER, R. H. .... CM1/c  
 FLANAGAN, J. L. .... Cox.  
 FOOTIT, R. R. .... S1/c  
 FORAN, W. M. .... RdM3/c  
 FOREMAN, J. W. .... S1/c  
 FOX, D. R. .... RdM3/c  
 FOXWELL, G. A. .... S1/c  
 FUGLAR, R. L. .... RdM3/c  
 FULLER, D. D. .... WT3/c

## G

GARDNER, O. D. .... WT3/c  
 GARRETT, B. M. .... S1/c  
 GEIC, S. T. .... RT3/c  
 GEIGER, M. D. .... Cox.  
 GENTZLER, C. L. .... CBM  
 GEROR, H. .... BM2/c  
 GIBBS, H. W. .... EM3/c  
 GIBSON, R. M. .... PhM3/c  
 GIBSON, W. J. .... S1/c  
 GLOWAKI, H. P. .... SM3/c  
 GONDA, M. T. .... S1/c  
 GOODSON, "J" "W" "C" .... S1/c

GOODWYN, A. W. .... CMM  
 GRABOWSKI, E. .... CBM  
 GRAHAM, D. C. .... SSML3/c  
 GREASHAM, H. L. .... MM2/c  
 GREEN, C. B. .... SSML3/c  
 GRIES, C. H. .... RM1/c  
 GRIFFIN, J. C. .... MoMM3/c  
 GROSS, D. P. .... CEM  
 GUTHRIE, E. G. .... CMM

## H

HAMMER, C. L. .... SK3/c  
 HANKE, Jr., A. .... MM3/c  
 HARDENFELDER, A. C. .... CMM  
 HARLESS, J. M. .... CWT  
 HARRIS, O. W. .... SSMT3/c  
 HARRIS, J. W. .... WT1/c  
 HARRISON, E. M. .... RdM3/c  
 HARRISON, F. W. .... QM1/c  
 HATCH, W. A. .... Cox.  
 HATHAWAY, C. B. .... Cox.  
 HAWKEY, J. H. .... Bkr3/c  
 HAYWOOD, F. W. .... GM3/c  
 HEINECKE, M. G. .... CCS  
 HELMS, C. S. .... S1/c  
 HENDERSON, J. R. .... S1/c  
 HERNDON, A. F. .... EM2/c  
 HERNDON, C. W. .... Cox.  
 HERRMAN, C. W. .... MM1/c  
 HINESLEY, B. .... GM1/c  
 HINSON, V. R. .... Cox.  
 HINTON, F. A. .... Y3/c  
 HOGARTY, E. R. .... RdM3/c  
 HOKANSON, T. W. .... EM2/c  
 HOLLEHAN, C. H. .... MoMM2/c  
 HOLM, W. F. .... BM1/c  
 HOOPER, N. .... BM2/c  
 HOPKINS, R. A. .... B1/c  
 HORNICK, C. O. .... S1/c  
 HOTTE, M. E. .... QM3/c  
 HOUTMAN, F. L. .... S1/c  
 HOWERDEL, V. C. .... RM3/c  
 HOYT, C. G. .... S1/c  
 HUBBARD, G. H. .... F1/c  
 HUNTLEY, M. L. .... Cox  
 HUNTOON, R. E. .... S1/c

## I

IDDINGS, W. R. .... SF2/c  
 IHLE, J. .... CCS  
 INMAN, W. N. .... S1/c



# SHIP'S ROSTER

35

## J

JACOBS, J. P. .... WT2/c  
JACKSON, D. W. .... SKD1/c  
JACKSON, V. W. .... WT3/c  
JALANIVICH, D. W. .... CM2/c  
JENKINS, W. H. .... SSML2/c  
JOHNSON, A. G. .... CRM  
JOHNSON, H. O. .... GM1/c  
JOHNSON, J. A. .... Bkr2/c  
JOHNSON, M. I. .... GM3/c  
JOHNSON, R. N. .... S1/c  
JOHNSON, R. T. .... FC2/c  
JOHNSON, V. E. .... BM1/c  
JONES, C. L. .... S1/c  
JONES, H. C. .... WT3/c  
JONES, O. .... GM3/c  
JONES, R. T. .... S1/c(Y)  
JORDAN, J. L. .... S1/c  
JORGENSEN, H. J. .... S1/c

## K

KALLSTROM, L. E. .... RdM2/c  
KAMPEL, Israel .... EM3/c  
KAPPLER, W. H. .... ETM3/c  
KAULBACK, F. G. .... Cox  
KAY, R. A. .... Y1/c  
KECK, W. N. .... S1/c  
KEELER, Jr., A. .... PhM1/c  
KELLER, A. P. F. .... MoMM3/c  
KEMSKE, L. W. .... S1/c  
KENIRY, G. J. .... Cox  
KERR, D. R. .... CM2/c  
KERR, R. L. .... BM1/c  
KEYES, R. L. .... SM2/c  
KILARESKE, M. J. .... SSML2/c  
KIRK, Jr., J. G. .... S1/c  
KLUIS, A. D. .... MoMM2/c  
KOIRO, F. J. .... MM1/c  
KONKEL, F. P. .... Cox  
KORTAS, B. D. .... CSF  
KRAHMER, R. F. .... S1/c  
KRENTKOWSKI, J. A. .... BM2/c

## L

LA FOLLETTE, J. R. .... SF1/c  
LAKES, B. .... SM1/c  
LAMBERT, C. W. .... S1/c  
LANDINO, J. P. .... SF3/c  
LANE, L. F. .... GM2/c  
LARSEN, B. W. .... EM2/c  
LARSEN, M. A. .... Cox  
LAVELLE, M. P. .... CSK

LE BLANC, J. S. .... MM2/c  
LETSCH, Jr., F. W. .... MM3/c  
LIEF, F. W. .... MoMM1/c  
LINEBERRY, G. E. .... Cox  
LITVIN, A. C. .... Cox  
LOWNSBERRY, L. E. .... S1/c  
LUCK, B. F. .... St2/c  
LUDEWIG, Jr., C. H. .... MoMM3/c

## M

MAGEE, G. P. .... MM1/c  
MAIRA, J. F. .... S1/c  
MANN, W. L. .... S1/c  
MARCINKOWSKI, W. J. .... S1/c  
MARSHALL, G. V. .... St3/c  
MARTIN, E. L. .... CMM  
MARTIN, L. J. .... RM1/c  
MAW, A. F. .... GM2/c  
MAXWELL, H. .... St2/c  
McCAFFREY, Jr., R. A. .... S1/c  
McCORMICK, C. V. .... F2/c  
McCUNE, Jr., F. M. .... RdM3/c  
McGAHA, P. S. .... S1/c  
McGEE, C. E. .... S1/c  
McGOWAN, J. .... BM1/c  
McKINNEY, H. D. .... S1/c  
McKNIGHT, H. C. .... S1/c  
MENNE, E. F. .... BM2/c  
MERCER, R. E. .... MM2/c  
MIDGETT, Z. V. .... S1/c  
MILLER, A. J. .... Cox  
MILLER, C. E. .... S1/c  
MILLER, C. S. .... StM1/c  
MILLER, G. G. .... S1/c  
MILLIGAN, R. W. .... F2/c  
MITCHELL, P. L. .... Bkr3/c  
MITZKA, J. P. .... SM2/c  
MOODY, C. H. .... Cox  
MOORE, C. D. .... SK2/c  
MOORE, G. E. .... S1/c  
MOORE, W. S. .... Cox  
MOOS, G. L. .... F2/c  
MOTAKA, L. D. .... S1/c(QM)  
MUNRO, G. W. .... S1/c  
MURRAY, W. A. .... CSM  
MYKRA, W. H. .... S1/c

## N

NAUMAN, V. A. .... S1/c  
NEAL, F. H. .... GM3/c  
NELSON, W. M. .... S1/c  
NEMETH, J. E. .... Bkr1/c  
NEPTUNE, J. .... GM2/c

NERNY, A. J. .... SK2/c  
NEWTON, W. G. .... CSK  
NICHOLS, J. C. .... Cox  
NISEN, N. M. .... SK2/c  
NOBLE, J. F. .... StM1/c  
NOGA, H. .... CWT  
NORMAN, A. L. .... GM3/c  
NYE, G. H. .... S1/c  
NYE, R. .... S1/c

## O

O'CONNOR, C. R. .... Cox  
O'CONNOR, Jr., J. J. .... F2/c  
OLKOSKY, R. F. .... S1/c  
OLSEN, E. C. .... SC(B)3/c  
OLSON, E. H. .... MM3/c  
O'NEIL, J. J. .... RM3/c  
ORTH, C. P. .... S1/c  
OSWALT, Jr., J. .... PhM2/c  
OWENS, Jr., C. L. .... S1/c

## P

PAGE, A. L. .... St3/c  
PARADES, M. .... MM2/c  
PARKER, J. C. .... RM1/c  
PARRISH, F. M. .... Cox  
PARSON, G. H. .... Bkr2/c  
PATRIE, D. L. .... QM2/c  
PATTERSON, A. .... St3/c  
PATTERSON, R. H. .... BM2/c  
PAYNE, O. T. .... Cox  
PEDERQUIST, R. A. .... MoMM3/c  
PENICK, W. .... StM1/c  
PESTRIDGE, J. E. .... CMM  
PETERS, R. J., Jr. .... S1/c  
PETERSON, N. M. .... S1/c  
PHELPS, V. M. .... S1/c  
Phillips, J. J. .... Cox  
PHIPPS, K. L. .... F2/c  
PICKREN, C. T. .... MaM3/c  
PIGADIS, A. O. .... MM2/c  
PINTA, D. W. .... F2/c  
PIRIE, L. C., Jr. .... B1/c  
POLIKOWSKI, W. M. .... SF2/c  
POOL, M. S. .... F2/c  
POPE, H. L. .... CM2/c  
POTTER, M. B. .... Cox  
PROCTOR, H. M. .... RM3/c

## Q

QUATTLEBAUM, W. J. .... S1/c



## SHIP'S ROSTER

## R

RAGER, W. J. .... Cox  
 RAKES, J. J. .... SF3/c  
 RANSON, W. E. .... Cox  
 RASMUSSEN, I. M. .... RdM2/c  
 RATHBUN, G. H. .... Y2/c  
 RAYMOND, K. L. .... CMM  
 RAYNOR, J. C. .... QM3/c  
 REED, F. E. .... S1/c(Y)  
 REEVES, C. B. .... BM2/c  
 REEVES, L. B., Jr. .... S1/c  
 RENSON, W. E. .... Cox  
 REY, F. E. .... Cox  
 RICE, W. F. .... RM2/c  
 RICH, J. E. .... EM3/c  
 RIDENOUR, J. O. .... S1/c  
 RIGHTER, N. W. .... CMM  
 RINDAL, D. B. .... S1/c  
 ROBERGE, R. E. .... CMM  
 ROBINSON, G. A. .... S1/c  
 ROE, E. J. .... S1/c  
 ROLES, J. H. .... SK2/c  
 ROSE, V. E. .... CSF  
 RUFFING, C. V. .... S1/c  
 RUSSELL, A. B. .... MM3/c  
 RUSSELL, H. R. .... BM2/c

## S

SADLER, D. .... WT1/c  
 SAGDAL, A. C. .... SF1/c  
 SALERNO, F. G. .... S1/c  
 SARING, J. L. .... GM3/c  
 SATTler, T. R. .... S1/c  
 SCHILLING, E. D. .... S1/c  
 SCHMIDT, C. T. .... RdM2/c  
 SCHMIDT ..... SF3/c  
 SCHMITZ, A. L. .... MM3/c  
 SEASE, H. .... CPhM  
 SEE, R. L. .... SK1/c  
 SEIGNEURIE, R. L. .... S1/c  
 SELDOM, R. A. .... StM1/c  
 SHAPIRO, M. H. .... S1/c(RdM)  
 SHEFFEY, R. B. .... Cox  
 SHEPPARD, W. J. P. .... S1/c  
 SHOOKMAN, C. E. .... S1/c  
 SIMON, C. E. .... RT2/c

SIMON, L. K. .... RdM3/c  
 SIMON, R. L. .... RM2/c  
 SIX, H. J. .... GM1/c  
 SKINNER, W. .... S1/c  
 SLATER, M. W. .... S1/c  
 SLOYER, W. O. .... RdM2/c  
 SMALL, W. L. .... S1/c  
 SMALLWOOD, C. E. .... SSMB2/c  
 SMITH, D. A. .... S1/c  
 SMITH, H. A. .... Cox  
 SMITH, P. J. .... CPhM  
 SMITH, U. .... GM3/c  
 SOUTHARD, W. J. .... BM1/c  
 SPEIGHT, C. .... StM2/c  
 SPIRES, C. .... F1/c  
 SPROUSE, R. D. .... S1/c  
 STANGE, F. .... MoMM1/c  
 STERZICK, C. F. .... CQM  
 STEWART, K. L. .... SSML3/c  
 STONEBRAKER, R. L. .... SF3/c  
 STRAND, G. T. .... CSF  
 STUBBS, A. G. .... S1/c  
 SUNDBERG, A. J. .... Y3/c  
 SZATKOWSKI, M. .... BM2/c  
 SYLVESTER, R. M. .... EM3/c

## T

TARDIFF, L. J. .... FCR3/c  
 TERRONES, E. L. .... RM2/c  
 TEMPLE, C. D. .... S1/c  
 THOLEN, R. J. .... S1/c  
 THOMPSON, C. .... S1/c  
 TINDAL, W. W., Jr. .... BM2/c  
 TIPPETT, K. L. .... MM2/c  
 TITUS, K. R. .... BM2/c  
 TOBIN, L. J. .... MoMM2/c  
 TOOMBS, J. J. .... S1/c  
 TOTO, R. R. .... SM2/c  
 TUDOR, L. G. .... F1/c  
 TURBIVILLE, W. H. .... Cox  
 TUSKUSKY, E. J. .... S1/c

## V

VANCE, H. A. .... St3/c  
 VARGO, M. .... F1/c

## W

WADNER, W. V. .... CSM  
 WAGNER, P. E. .... PhM3/c  
 WALKER, G. V. .... WT3/c  
 WALLACE, J. R. .... CY  
 WALLINGFORD, R. L. .... WT1/c  
 WALETZKO, P. .... S1/c  
 WALKER, D. W. .... S1/c  
 WALLER, H. W. .... CMM  
 WALWORTH, W. F. .... Cox  
 WATERS, J. C. .... Cox  
 WEARREN, T. P. .... GGM  
 WELLS, L. Q. .... S1/c  
 WERK, G. B. .... S1/c  
 WESTER, W. T. .... S1/c  
 WESTERMAN, F. A. .... EM1/c  
 WHEELER, T. H. .... SC1/c  
 WHITCOMB, W. D. .... SM2/c  
 WHITE, S. F. .... CWT  
 WHITE, P. E. .... MM3/c  
 WHITEHEAD, H. L. .... S1/c  
 WHITEMAN, J. W. .... S1/c  
 WIESE, H. L. .... S1/c  
 WILDES, E. L., Jr. .... PhM3/c  
 WILKENS, H. A. .... SC2/c  
 WILLIAMS, J. .... CK2/c  
 WILLIAMSON, H. "D" .... Y3/c  
 WILSON, F. K. .... MM2/c  
 WILTON, H. P. .... CCS  
 WITTE, F. T. .... F2/c  
 WOHL, J. F. .... Cox  
 WONG, A. .... SK2/c  
 WOOD, H. D. .... F1/c  
 WOODBURY, J. H. .... EM2/c  
 WORLEY, O. L. .... STM2/c  
 WORTHINGTON, "J." "W." .... S2/c  
 WRIGHT, J. L. .... S1/c  
 WRIGHT, "W." "C." .... StM2/c

## Y

YENKE, P. J. .... SM2/c  
 YETKIE, H. E. .... SM2/c  
 YOUNG, T. R. .... CBM

## Z

ZBROZEK, W. J. .... PhM2/c  
 ZENOCK, A. A. .... S1/c  
 ZIRANSKI, C. L. .... SC1/c  
 ZUPKE, J. L. .... SM3/c



# OFFICERS

37



## SHIP'S OFFICERS OF THE U.S.S. TATE

Commander Lyon  
Lieutenant Commander Hall  
Lieutenant Propek





# OFFICERS



*Above:*

Lt. (jg) Caslow

*Upper left:*

Lt. (jg) Waller and Lt. (jg) Leahy playing Russian bank in the wardroom.

*Left center:*

Ens. Waller



"On watch"

Ens. Stewart



## ENLISTED PERSONNEL

39



Above:  
The Engineering Division

Upper right:  
Second Division



First Division



Third Division



Second Division





# ENLISTED PERSONNEL



U.S. Navy  
"C & R" Division  
"H" Division



Upper left:  
"H" Division

Upper right:  
"C & R" Division

Center:  
"N" Division

Bottom:  
Yeomen



War-time Voyages  
of the

U. S. S.

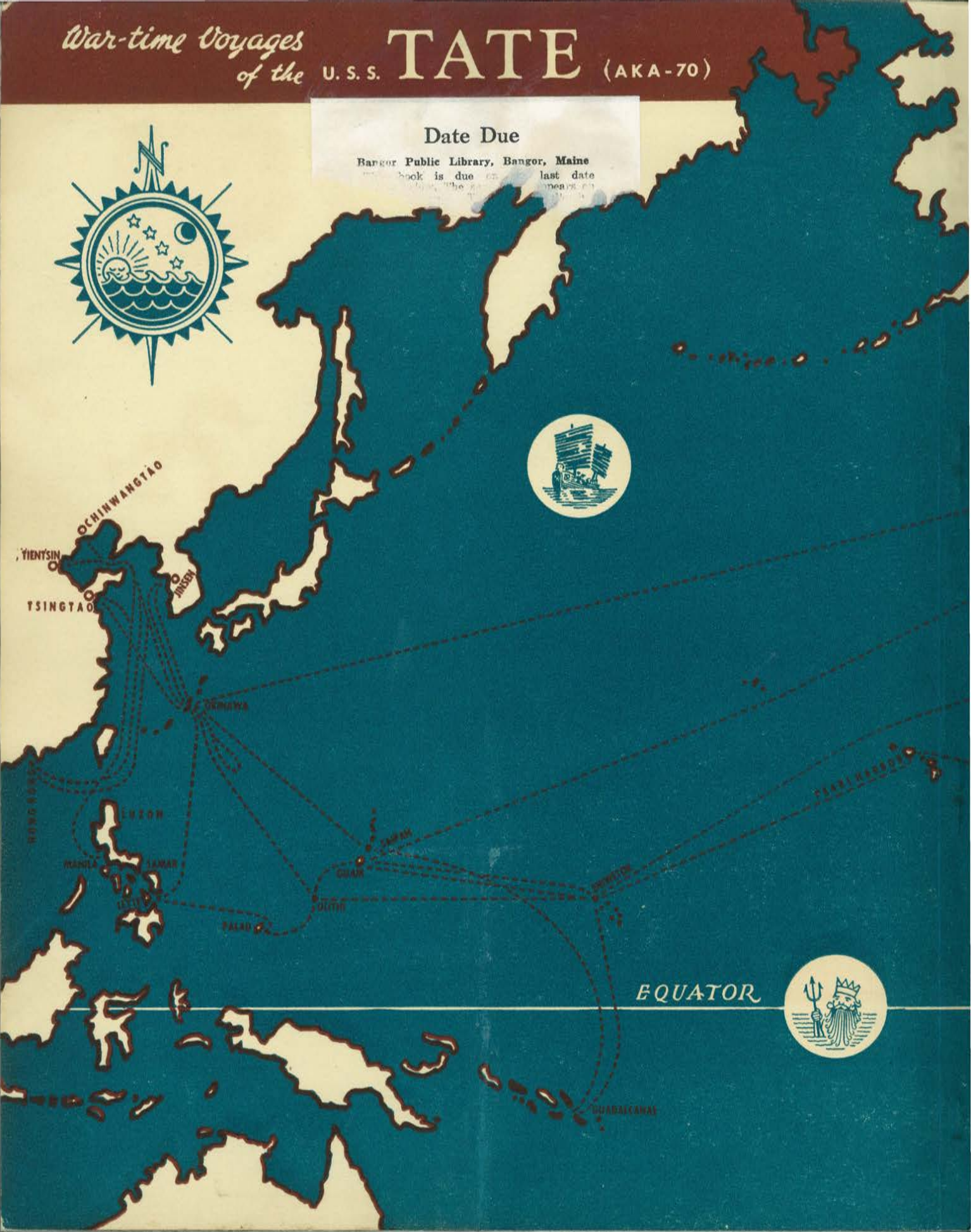
TATE

(AKA-70)

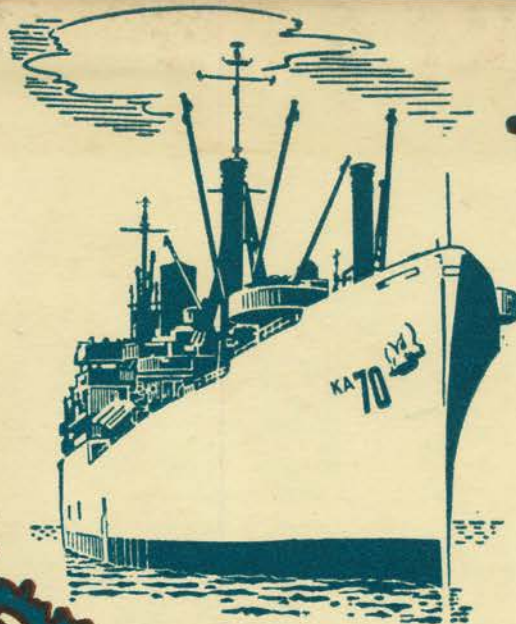
Date Due

Bangor Public Library, Bangor, Maine

This book is due on \_\_\_\_\_ last date  
checked out \_\_\_\_\_







○ EVERETT  
○ SEATTLE

○ SAN FRANCISCO

DAVISVILLE ○



940.545. US843 W

**For Reference**

**Not to be taken**

**from this library**

# THE TRAVELS OF THE TATE FROM 25 NOVEMBER 1944 TO 14 APRIL 1945

## ARRIVED

## DEPARTED

Commissioned	25 November 1944	6 December 1944
Charleston, South Carolina	7 December	9 December
Norfolk, Virginia	9 December	15 December
Annapolis, Maryland	15 December	21 December
Portsmouth, Virginia	22 December	30 December
Davisville, Rhode Island	4 January 1945	5 January 1945
Colon, Republic of Panama	6 January	6 January
Cristobal, Republic of Panama	18 January	28 January
Pearl Harbor, Oahu, T. H.	29 January	1 February
Port Allen, Kauai, T. H.	7 February	9 February
Eniwetok, Marshall Islands	13 February	14 February
Ulithi, Caroline Islands	16 February	18 February
Palau Islands	21 February	22 February
Leyte, Philippine Islands	22 February	3 March
Samar, Philippine Islands	3 March	21 March
Leyte (Maneuvers)	26 March	2 April
Kerama Retto, Ryukyu Islands	2 April	14 April
Deployed off Okinawa		

Okinawa, Ryukyu Islands	14
Ie Shima, Ryukyu Islands	16
Okinawa, Ryukyu Islands	20
Tinian, Marianas Islands	27
Saipan, Marianas Islands	28
EQUATOR	6
Guadalcanal, Solomon Islands	8
Florida, Gayiti, Tulagi, Solomon Islands	16
Eniwetok, Marshall Islands	22
Guam, Marianas Islands	4
Seattle, Washington	28
Everett, Washington	28
Seattle, Washington	14
San Francisco, California	31
Eniwetok, Marshall Islands	6
Guam, Marianas Islands	14
Ulithi, Caroline Islands	27
Buckner Bay, Okinawa, Ryukyu Islands	4

BANGOR PUBLIC LIBRARY





