

1961

The Crusader: 1961

John Bapst High School

Follow this and additional works at: http://digicom.bpl.lib.me.us/jbhs_yearbooks

Recommended Citation

John Bapst High School, "The Crusader: 1961" (1961). *John Bapst High School Yearbooks*. 12.
http://digicom.bpl.lib.me.us/jbhs_yearbooks/12

This Book is brought to you for free and open access by the John Bapst High School at Bangor Community: Digital Commons@bpl. It has been accepted for inclusion in John Bapst High School Yearbooks by an authorized administrator of Bangor Community: Digital Commons@bpl. For more information, please contact ccoombs@bpl.lib.me.us.

V373
741
J62b



The

Crusader

1961





The
SENIOR
CLASS
of



JOHN BAPST REGIONAL
HIGH SCHOOL

Proudly presents

BAPST
REGIONAL
LIBRARY
BAPST REGIONAL

The

19

C

Introduction	1
Pastoral	4
Dedication	5
In Appreciation	6
Faculty	7
Seniors	15
Social	51
Activities	59
Sports	75
Underclassmen	93
Patrons and Advertisements	106



61

usader



Co-Editors

Harry McNally
Norma Hart

Senior Section

Mary Rowe
Harry McNally

Faculty

Richard O'Brien

Social

Andrew Finnegan
Judith Macdonald
Mary Rowe

Dramatics and Oratory

Barbara King
James Richards

Activities

Norma Hart
James St. Peter
Richard O'Brien
Robert Barrett

Sports

Austin Spencer
James St. Peter

Underclassmen

Barbara Lucas
Elizabeth Greer

Typing

Elizabeth Greer

Art

Edward Baker



Rev. John C. Curran
St. Joseph's Church
Old Town



Rt. Rev. Msgr. Edward F. Ward
St. Mary's Church
Bangor



Rev. Thomas M. Nelligan
St. Mary's Church
Orono



Rev. Thomas H. Moriarity
St. Joseph's Church
Brewer

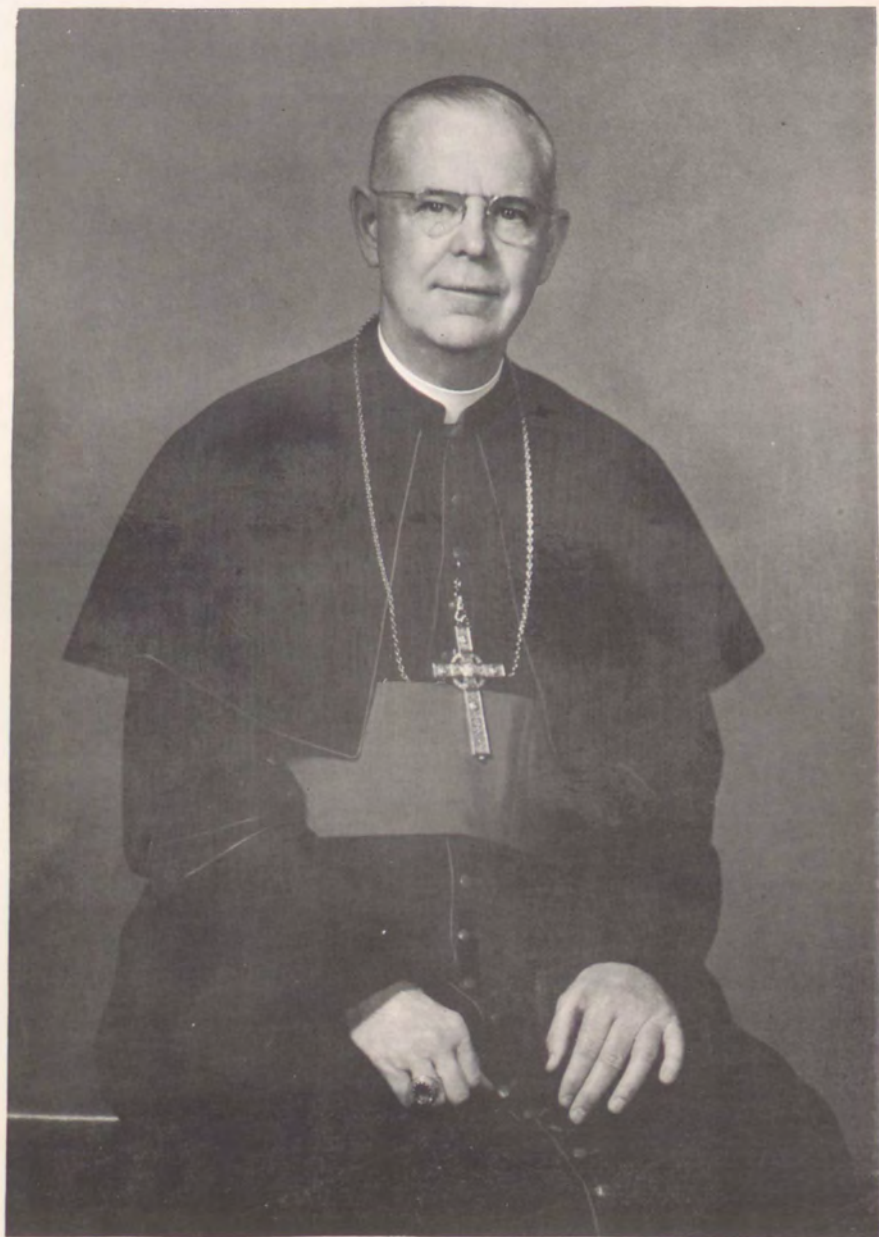


Rev. James H. Keegan
St. John's Church
Bangor



Rev. Albert J. Berand
St. Ann's Church
Bradley

Due to the leadership and sanctity of her Bishops the Catholic Church in Maine has gone through hardships and crises without faltering. We the class of "61" are honored to dedicate this book to His Excellency the Most Reverend Daniel J. Feeney, Bishop of Portland, our ecclesiastical leader.



IN APPRECIATION



Students at Bapst are fortunate in knowing Brother Benilde and Sister Mary Irene. Each enjoys the respect and confidence of the student body and each is equipped for the task of molding and directing those who come under their separate guidance. Their working together for the school gives us an example of what can be accomplished by teamwork.



F
A
C
U
L
T
Y



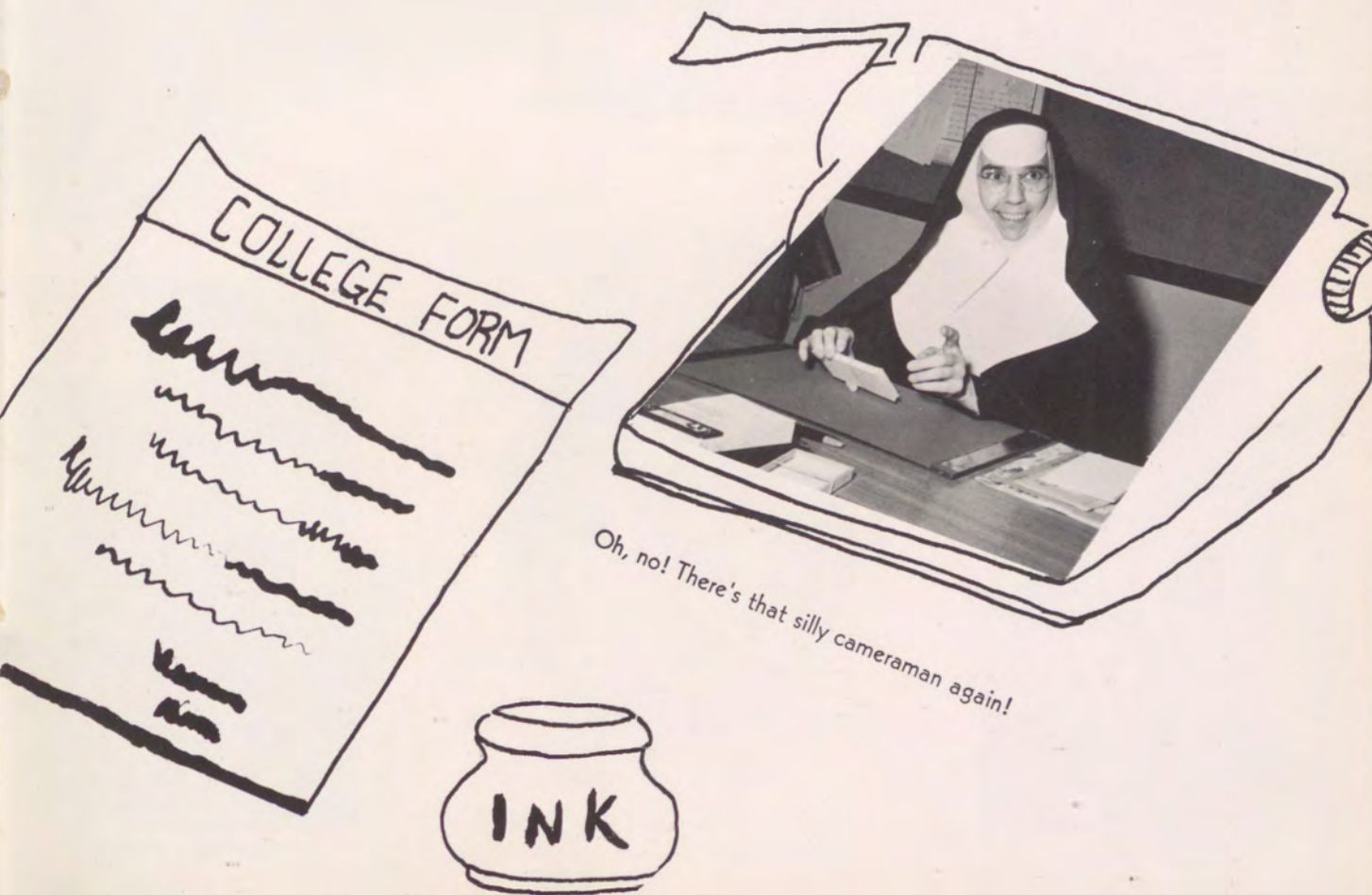
BROTHER MALCOLM C. F. X.

Brother Malcolm, C. F. X., energetic principal of the Boys' Department, has shown to the class of '61" outstanding leadership, personality and enthusiasm which we can look back on for years to come. His infinite understanding shown towards his students has made a lasting impression on those who have come in contact with him.



SISTER MARY LUKE

We, the class of 1961, wish to thank our beloved principal, Sister Mary Luke, for her ceaseless efforts in our behalf, her constant interest in the Catholic development of our minds and souls, and the generous, sympathetic assistance she has given us in all our activities.





SISTER MARY EMERITA

Math., World History



BROTHER LUANUS

English, Religion, Driver Ed.,
Economics



SISTER MARY ROSE

Religion, Guidance, Social Studies,
St. John's Choir



And these girls call this math!



BROTHER SIMEON

French, Latin, Debating, Public
Speaking



SISTER MARY LOUIS

Religion, Guidance, Latin, French,
French Club



BROTHER CLEMENS

Religion, Commercial Law, So-
ciology, Bookstore



SISTER MARY PIUS

Typing, Office Practice, Stenography, English, Glee Club, St. Mary's Choir



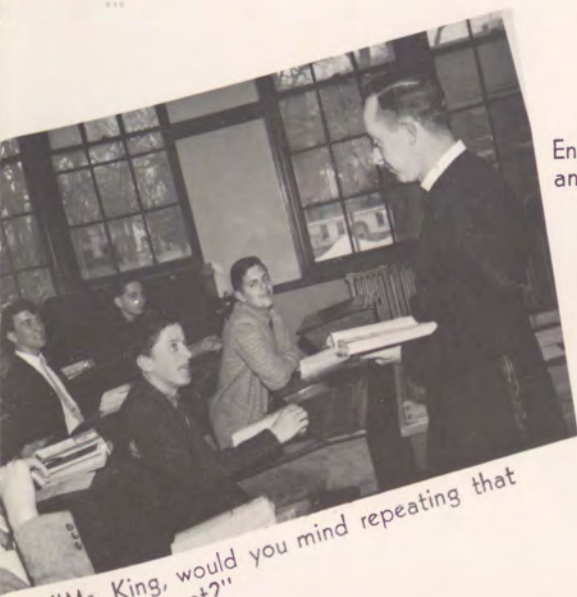
BROTHER CRONAN

English, French, Freshman Football, and Basketball



SISTER MARY RAYMOND

Religion, Guidance, English, U. S. History, Honor Society, Speech Club



"Mr. King, would you mind repeating that last statement?"



BROTHER MEL

Algebra, Geometry, General Science, Asst. Football and Track Coach, J. V. Basketball Coach



SISTER MARY McAULEY

Typing, Stenography, Bookkeeping, Office Practice



BROTHER MATTHIAS

Religion, Economics, English, Yearbook and Newspaper Moderator, Asst. Track Coach, Sophomore Guidance



"Well, Mr. Bard. It does seem correct."



SISTER MARY JEANNE

Religion, Guidance, Math., Health,
Sodality



BROTHER LINUS

Business Arith., Religion, Book-
keeping, Typing, Athletic Director,
Guidance, Freshman Sodality Mod-
erator



SISTER MARY IRENE

Religion, Guidance, Algebra,
English

"Now Mary Lou, do you still agree that 'Brutus was an
honorable man'?"





SISTER CHRISTINE MARIE

Religion, Guidance, General
Science, Chemistry, Biology



"And when we go to the lab today, it must be understood — no girl is to scream."



BROTHER BENILDE

Religion, Chemistry, Physics, Advanced Math., Algebra, Sodality, Dance Committee, Dramatics, Guidance, Vocation Director, Moderator of Key Club

"Well, Brother, I must be a genius! What else?"
"Ahem — Mr. Fernald."



SISTER MARY DOMINICA

Religion, Guidance, English, Filing,
C. C. D.



MR. THOMAS MAHANEY

Health, Biology, Varsity Coach of Basketball, Football and Baseball



MRS. BERNADETTE DAIGLE

Typing, French, Business Training



MR. THOMAS DOOLEY

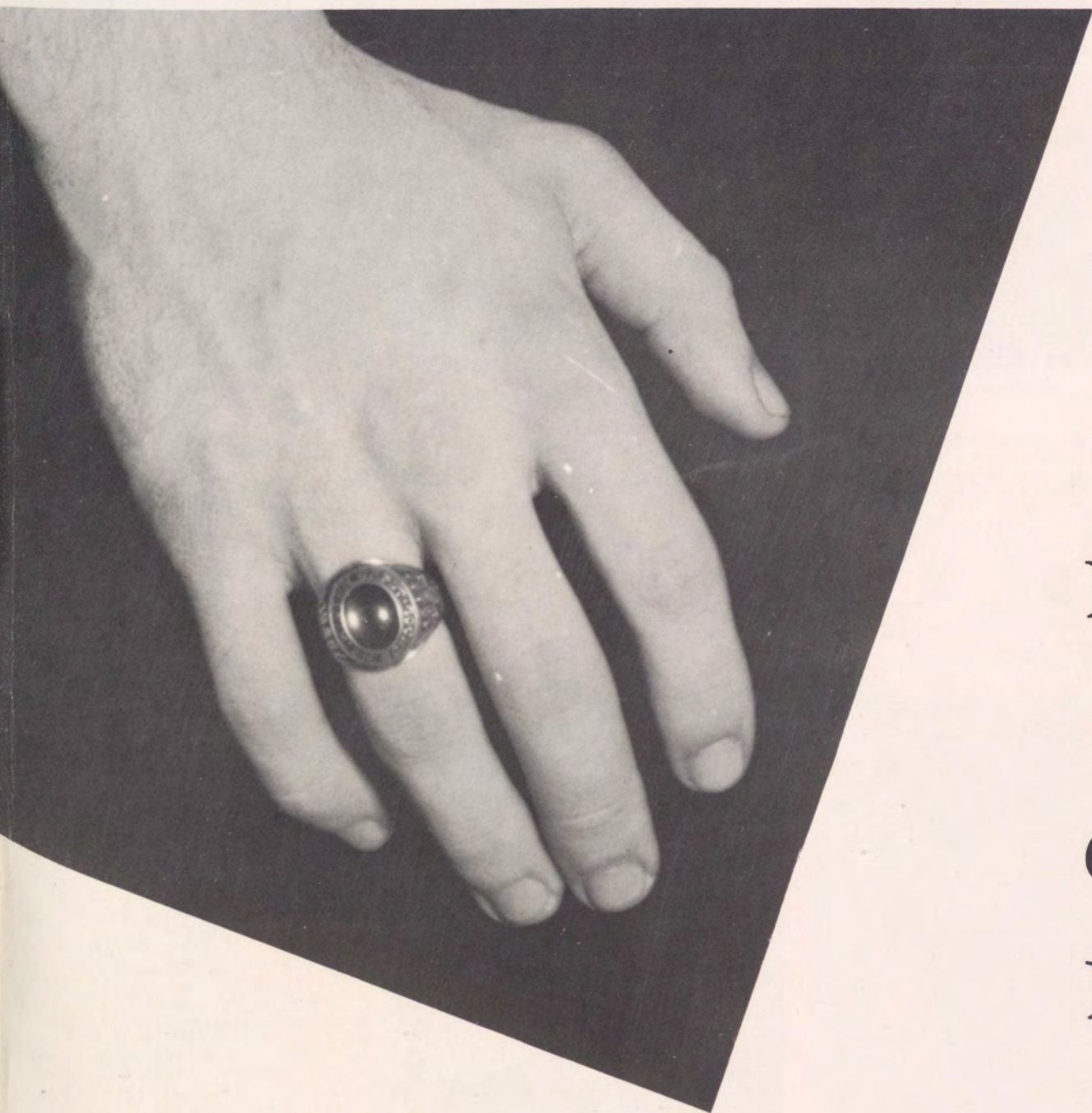
English, General Business and Civics, World History, Asst. Football and Basketball Coach, Track Coach

Come, now, Carol. It's simple!



Please Mr. Blake, we must try to concentrate!





S
E
N
I
O
R
S



SHARON ADAMS

Sharon

Academic

Thoughtful, helpful, happy and hospitable . . . willing to those who ask her.

Activities: Sodality 2, 3, 4; Glee Club 1, 2, 3, 4; Dance Committee 3; Science Fair 2, 3, 4; CCD 1, 2, 3; Library 2, 3

Future Plans: Nursing



MARY ELLEN ANGLE

Pessimist

Academic

Loyal Crusader . . . smile that launched a thousand smiles . . . always good natured.

Activities: Sodality 2, 3, 4; Glee Club 2, 3, 4; Dance Committee 3, 4; Speech Club 4; Science Fair 3, 4; CCD 1, 2, 3; Library 2, 3, 4; Usher 3; French Club 4.

Future Plans: Nursing



MARY ELLEN ARMITAGE

Mama Nellen

Commercial

Pixie smile . . . devilish air . . . petite lady, full of life.

Activities: Glee Club 4; Dance Committee 2, 3, 4; Choir 1, 2, 3, 4; Cheerleader 1, 2; Usher 3.

Future Plans: Holy Ghost



EDWARD BAKER

Jerry

Commercial

Talent with an artist's palette . . . quiet, yet speaks with wit.

Activities: Newspaper 4; Dance Committee 3, 4; Track 1; Dramatics 1; Science Fair 1; Yearbook 4; Highway Safety 2, 3.
Future Plans: Husson College

ALPHONSE BARD

Mickey

Academic

Always says hello to all . . . enjoys playing baseball . . . works hard at his studies.

Baseball 1, 2, 3, 4; Science Fair 1; Football 1, 2.
Future Plans: Air Force



MARY BLINN

Mary

Academic

Quiet interest in everyone and everything . . . well informed and refined.

Activities: Sodality 2; Class Officer 1, 2; Science Fair 3, 4; Library 3.
Future Plans: Lake Wales, Florida



RICHARD BROOKS

Boogie

Commercial

Master of the football field . . . hard-worker . . . well known and liked by all.

Activities: Class Officer 1, 3, 4; Track 1; Football 1, 2, 3, 4.

Future Plans: College



CAROL BROWN

Brownie

Academic

Picture of neatness . . . leans to the tailored touch . . . sophisticated and sweet.

Activities: Sodality 2, 3, 4; Glee Club 4; Library 2; Dance Committee 2, 3, 4; Choir 1, 2, 3, 4; Speech Club 4; Usher 3, 4; Newspaper 3; French Club 4.



LOUIS BUCK

Louis

Commercial

Easy and pleasant mannered . . . ever ready for a good time . . . blushes easily . . . never discouraged.

Activities: Science Fair 1.

Future Plans: Mechanic



ROBERT BURNS

Bob

Commercial

Quiet . . . reserved . . . but don't let him fool you . . . don't underestimate his ingenuity . . . on the dance floor, an example of accomplishment.

Future Plans: Service



ANNA CARPARELLI

Anna

Academic

Busy with activities . . . loyal to the canvas . . . any ideas for a poster?

Activities: French Club 4; Sodality 2, 3, 4; Dance Committee 2, 3, 4; Highway Safety Council 3; Choir 1, 2, 3, 4; Cheerleader 1, 2, 3, 4; Speech Club 3, 4; Dramatics Club 1; Prize Speaking Night 3; Science Fair 3, 4; Yearbook Staff 2, 4; CCD 1, 2.

Future Plans: College



NEAL CHAMBERLAIN

Neal

Commercial

Classy representative of WGUY . . . makes a big hit with the gals . . . has a million questions for his teachers.

Activities: Dance Committee 1; Track 2; Science Fair 1, Football 2.

Future Plans: Navy



ANNE CHISHOLM

Sal

Academic

New addition to Bapst this year . . . gifted with the ability to make friends easily.

Future Plans: College



TERENCE CHURCHILL

Fingers

Academic

Talented keyboard artist . . . always smiling . . . lends a hand to anyone in need.

Activities: Sodality 3, 4; Newspaper 4; Class Officer 1; Dramatics 1, 2, 3; Science Fair 3, 4; Christmas Concert 3, 4.

Future Plans: New England Conservatory



DANIEL COLBURN

Pat

Academic

Original "old smoother" . . . easy going . . . serious . . . always a favorite . . . constantly run with the Saint.

Activities: Sodality 3, 4; Class Officer 1, 4; Dance Committee 4; Baseball 2, 3, 4; Basketball 2; Dramatics 3, 4; Science Fair 3, 4; Christmas Concert 3, 4; Intramurals. Future Plans: Boston College.



ROBERT COMMEAU

Bob

Academic

The joker of the class . . . witty . . . easy mannered . . .
"The Most Happy Feller" . . . always ready with a
helping hand.

Activities: Sodality 4; Science Fair 4.
Future Plans: College.



PAUL CONNOR

Tennessee

Commercial

Easy going . . . hard working . . . quiet-at-times . . .
sharp sense of humor . . . has many friends.

Activities: Newspaper 4.
Future Plans: College.



THOMAS CONSTANTINE

Tom

Academic

High frequency thoughts . . . Mr. Intelligent . . .
chemistry's answer to tomorrow's world.

Activities: Sodality 3, 4; Newspaper 4; Class Officer 2,
3, 4; Debating 4; Science Fair 3, 4; Yearbook 3; Boys'
State 3.
Future Plans: St. Francis Xavier.



MICHAEL CRAWFORD

Mike

Academic

Now you see him now you don't . . . always surprising someone with a pleasant smile . . . optimist.

Activities: Sodality 3, 4; Newspaper 3, 4; Dance Committee 1; Prize Speaking Festival 1; Science Fair 3, 4; Christmas Concert 3.
Future Plans: Husson College



PAMELA DARLING

Pam

Commercial

Sugar and spice and everything nice . . . soft voice . . . poised manner.

Activities: Glee Club 2, 3, 4; Choir 2, 3, 4; Dance Committee 3, 4; Science Fair; Newspaper Staff 3.
Future Plans: Radiologist



EARL DEAN

Skinney

Commercial

Everyone who knows him likes him . . . welcome addition to any gathering . . . good-natured.

Activities: Sodality 4; Class Officer 1, 2, 3, 4; Basketball 1, 2, 3, 4; Science Fair 1; Football 1.
Future Plans: Service



ROBERT DEE

Bob

Commercial

Great asset to both Steven's Studios and to Baptist . . .
Ipana smile . . . always blushing.

Activities: Track 4.

Future Plans: Photography.



CLAUDIA DeGRASS

Claude

Academic

Lovely voice . . . fun-loving . . . frank but tactful . . .
great conversationalist.

Activities: Sodality 2, 3, 4; Glee Club 2, 3, 4; Dance
Committee 2; Highway Safety Council 2; Choir 1, 2, 3,
4; Science Fair 3, 4.
Future Plans: College.



MICHAEL DONOVAN

Blossom

Commercial

Jovial and congenial . . . with his line, he should go
fishing . . . guardian of athletic equipment . . . witty.

Activities: Baseball 2; Track 1, 4; Football 1; Football
and Basketball Manager 4.
Future Plans: Post Graduate Course.



JEAN DONZE

Jean

Academic

Quietly surveys the scene then speaks the truth . . . literary scholar.

Activities: Sodality 2, 3, 4; Speech Club 3, 4; Maine Speech Festival 3; Science Fair 3, 4; Library 2, 3, 4.



JOHN DORAN

John

Academic

Memorable for his serious nature . . . easy going . . . takes life as it comes . . . patient, genial, cooperative.

Activities: Sodality 3, 4; Newspaper 4; Science Fair 3, 4.



JOHN DOYLE

Billy

Academic

Remarkable talent for helping people enjoy themselves . . . chief stockholder in Butler's Market . . . good sport.

Activities: Sodality 3, 4; Newspaper 4; Debating 1; Class Officer 1; Basketball 1; Science Fair 3, 4.



MARY FARWELL

Micky

Commercial

Takes life as it comes . . . happy go lucky . . . fun-loving.

Activities: Sodality 2, 3, 4; Glee Club 4; Dance Committee 3, 4; Choir 1, 2, 3, 4; Speech Club 3, 4; Maine Speech Festival 3; Science Fair 2; Alternate Girls' State 3.

Future Plans: Business College.



DAVID FERNALD

Dave

Academic

A regular guy . . . well-mannered . . . smooth . . . man of many accomplishments . . . friendly.

Activities: Sodality 3, 4; Dramatics 3, 4; Science Fair 3, 4; Christmas Concert 3, 4; Intramurals 1, 2, 3, 4.

Future Plans: University of Maine.



IRENE FONTAINE

Irene

Academic

Stick-to-it . . . ambition . . . mathematically . . . motivated . . . I'd know that laugh anywhere.

Activities: Glee Club 1, 2, 3, 4; Honor Society 3, 4; Dance Committee 3; Highway Safety Council 2; Speech Club 3, 4; Science Fair 3, 4; CCD 1, 2, 4; Library 2, 3.

Future Plans: University of Maine.



JAYLENE GAGNON

Jaylene

Academic

Enjoys being a girl . . . sweet, serene . . . lovely addition to Bapst.

Activities: Sodality 2, 3, 4; Glee Club 1, 2, 3, 4; CCD 3; Dance Committee 2, 3, 4; Highway Safety Council 2, 3; Choir 3, 4; Speech Club 3, 4; Prize Speaking Night 3; French Club 4; Science Fair 3, 4; Library 3.
Future Plans: Nursing.

CHARLENE GILLIS

Gil

Commercial

A listener yet ready with the answer . . . friend to all who know her.

Activities: Sodality 2, 3, 4; Class Officer I; CCD I.
Future Plans: Bel-Air Studio.



MARY LENA GILLEY

Mary Lena

Commercial

Cheerful, light-hearted . . . sunny disposition . . . loves dancing

Future Plans: Dancer



NORAH GOLDEN

Norie

Commercial

Loves good friends and plenty of atmosphere . . .
flamboyant, fun-loving.

Activities: Glee Club 1, 2; Choir 1, 2, 3.
Future Plans: Airline Stewardess.



JUDY GOODREAU

Judy

Academic

Small in stature but intellectually a giant . . . studious
but fun-loving.

Activities: Sodality 4; Cheerleader 4; Science Fair 3, 4.
Future Plans: Mount St. Mary College.



ERNEST GRAY

Ernie

Academic

Serious . . . well-mannered . . . dig that red vest . . .
always agreeable . . . man of many accomplishments.

Activities: Class Officer 1; Dance Committee 2, 4; Bas-
ketball 1, 2; Prize Speaking Festival 4; Football 2, 4;
Public Speaking 4.
Future Plans: College.



ELIZABETH GREER

Betty Lou

General

Picturesque height . . . true business woman with a warm heart.

Activities: Glee Club 1, 2; Class Officer 4; Dance Committee 4; Choir 1, 2, 4; Yearbook Staff 4; Library 4.
Future Plans: Secretary



PAUL GUAY

Paul

Commercial

Genial and undisturbed . . . cruises in from Bradley every day . . . never at a loss for words.

Future Plans: College



GEORGANN GUIDMORE

Georgie

Academic

Effervescent, efficient and energetic . . . warm and willing to help.

Activities: Sodality 2, 3, 4; Glee Club 2, 3, 4; Dance Committee 4; Choir 1, 2, 3, 4; Speech Club 3, 4; Prize Speaking Night 3; Science Fair 3, 4; CCD 1.
Future Plans: University of Maine



PETER HANSEN

Pete

College

Hard worker of the corner drug store . . . one of St. Mary's best . . . sense of humor and wit . . . easy going.

Activities: Sodality 3, 4; Class Officer 1; Dance Committee 2; Science Fair 3, 4; Christmas Play 1, 2, 3, 4.
Future Plans: Husson College



NORMA HART

Norma

Academic

Always echoing memories . . . blushing as freely as she expresses herself . . . sentimentalist.

Activities: Dance Committee 4; Choir 1, 2, 3, 4; Science Fair 3, 4; Yearbook Staff 4; French Club 4.
Future Plans: Fashion Institute of Technology



JAMES HENRY

Henni

Academic

"Mr. Casual" . . . lover of good horseflesh . . . quiet . . . reserved . . . sincere and dependable . . . true gentleman.

Activities: Sodality 4; Track 1, 4; Science Fair 3, 4; Christmas Concert 1, 2, 3, 4.



ANTHONY KELLY

Tony

Commercial

The serious type . . . reserved . . . mild of tongue . . . a truly loyal and sincere guy . . . should go far.

Activities: Class Officer 4; Dance Committee 1, 2; Intramurals 1.

Future Plans: Husson College.



JOSEPH KENNEY

Joe

Academic

Anticipates medical career . . . has a good word for everyone . . . all American boy.

Activities: Sodality 3, 4; Newspaper 3, 4; Class Officer 1, 2, 3, 4; Dance Committee 3, 4; Baseball 3; Basketball 1, 2, 3, 4; Football 2; Dramatics 3, 4; Science Fair 3, 4; Dingo's Boys' State 3; Christmas Concert 3, 4.

Future Plans: Holy Cross



BARBARA KING

Barbie

Academic

A conscientious miss . . . china blue eyes . . . quiet yet quick to smile.

Activities: Glee Club 1, 2, 3; Honor Society 3, 4; Dance Committee 1, 2, 3, 4; Class Officer 3; Speech Club 3; Prize Speaking Night 3; Science Fair 3, 4; Yearbook Staff 4.

Future Plans: Mercy Hospital.



MELVIN LaMARCHE

Peter

Commercial

Serious student with a warm personality . . . will argue politics at the drop of a hat . . . well mannered.

Activities: Sodality 4; Basketball 1, 3; Science Fair 4.
Future Plans: Husson College



ANTOINETTE LANDRY

Toni

General

A little bit of heaven . . . intellectually gifted . . . sincere and honest.

Activities: Sodality 2, 3, 4; National Honor Society 3, 4; Choir 1, 2, 3, 4; Glee Club 1, 2, 3; CCD 1, 2, 3, 4; Library 1, 2, 3, 4.
Future Plans: Nursing



THOMAS LAVOIE

Flag Boy

Commercial

Serious, studious, sincere . . . Bapst man in every sense of the word . . . quite a guy.

Activities: Newspaper 3, 4; Dramatics 3, 4; Science Fair 1; Intramurals 1, 3.
Future Plans: Husson College



MARY LeVASSEUR

Spinny

Commercial

Quiet participant . . . easy-going . . . loves to kid and doesn't mind being kidded.

Activities: Choir 1, 2, 3, 4.

Future Plans: Beautician



BARBARA LUCAS

Barb

Academic

Able organizer . . . respected leader . . . efficiency plus . . . brilliant student.

Activities: Sodality 2, 3, 4; Class Officer 4; Dance Committee 4; Speech Club 3; Maine Speech Festival 3; Science Fair 3, 4; Yearbook Staff 3, 4; Library 2, 3.

Future Plans: College



NANCY LUCAS

Nan

Commercial

Dark-haired charmer . . . appetite for fun . . . plenty of sparkle.

Activities: Highway Safety Council 2.

Future Plans: Grace Downs Air Career School



JUDITH MACDONALD

Judy

Academic

Wealth to those who know her . . . wonder to all those who watch her . . . willing to all.

Activities: Sodality 2, 3, 4; Honor Society 3, 4; Class Officer 1, 2; Dance Committee 1, 2, 3, 4; CCD 1, 3; Highway Safety Council 2; Choir 1, 2; Cheerleader 1, 2, 3; Prize Speaking Night 3; Science Fair 3, 4; Yearbook Staff 3, 4; Library 2.
Future Plans: College



JANET MARTIN

Jan

General

Her red hair belies a temper . . . conscientious student . . . congenial to all.

Activities: Sodality 3, 4; Glee Club 1, 2, 3, 4; CCD 1, 2; Honor Society 3, 4; Class Officer 2; Choir 1, 2, 3, 4; Science Fair 1, 3, 4; Library 2.
Future Plans: Nursing



DONALD McCANN

Don

Commercial

Quiet, hardworking chap . . . a good sport, friendly, has warm respect of many . . . a baker extraordinary.

Activities: Class Officer 3; Intramurals 1, 2, 3, 4; Science Fair 1.
Future Plans: Unknown



NOREEN McCARTHY

Putty

Commercial

Calm, capable and quiet . . . Crusader supporter . . . frequents the basketball games.

Activities: Glee Club 4; Dance Committee 4; Choir 1, 2, 3, 4.

Future Plans: Secretary



CAROLYN McCLUSKEY

Harbo

Commercial

Whirlwind of activities, parties, dances, games . . . has fun and is fun.

Activities: Glee Club 4; Dance Committee 3; Choir 1, 2, 3, 4; Speech Club 4; Dramatics Club 1, 2.

Future Plans: Holy Ghost Hospital



SHEILA McDONNELL

Sheila

Academic

Full smile with a hint of mischief . . . personality plus . . . ivy appearance

Activities: Sodality 2, 3, 4; Glee Club 4; CCD 1; Dance Committee 1, 2, 3, 4; Highway Safety Council 2, 3; Choir 1, 2, 3, 4; Cheerleader 1, 2, 3; Science Fair 3, 4; Library 2, 3, 4; Dirigo Girls' State 3; French Club 4.

Future Plans: Nursing



MARTHA MCGUFF

Miffy

General

Reliable worker with a subtle wit . . . happiest of dispositions.

Activities: Glee Club 1, 2; Choir 3; CCD 1, 2; Library 3.
Future Plans: Telephone Company



BARBARA MCINISH

Bobbie

Academic

Copper-headed lass from Baltimore . . . logical thinker and a little on the shy side.

Activities: Glee Club 2, 4; French Club 4.



HARRY McNALLY

Mac

Academic

Outstanding editor of News and Yearbook . . . hard-working and unassuming . . . industrious . . . always serious.

Activities: Science Fair 3, 4; Sodality 4; Newspaper 3, 4; Yearbook 4; Public Speaking 1; Christmas Assembly 3, 4.

Future Plans: University of Maine



ERLINE MERRITT

Shorty

Good things come in small packages . . . to know her is to love her.

Activities: Sodality 4; Science Fair 3, 4; CCD 4; Library 2.
Future Plans: University of Maine

Academic



SHARON MISHOU

Sherry

Mixture of efficiency and friendliness . . . thorough in completing assignments.

Activities: Glee Club 4; Choir 1, 2, 3, 4; CCD 1, 2, 3.
Future Plans: Marriage

Commercial



THOMAS MORSE

Tee

Always proves his point . . . steadfast goals for further study . . . logical thinker.

Activities: Sodality 3, 4; Newspaper 3, 4; Dance Committee 1, 2, 3, 4; Baseball 1, 2, 3, 4; Basketball 1; Dramatics 2, 3, 4; Science Fair 3, 4; Football 1, 2, 3, 4; Yearbook 1, 2; Intramurals 1, 2, 3, 4; Highway Safety Council 1, 2, 3, 4; Christmas Concert 1, 2, 3, 4.
Future Plans: College

Academic



KIRK MONFORT

Kirk

A conservative gentleman . . . his easy-come, easy-go attitude makes him one of the boys.

Academic



BARBARA MURRAY

Barb

Classical

Happiest of dispositions . . . cheerful and sensible thinker . . . friendly Hi! to all.

Activities: Sodality 2, 3, 4; Glee Club 2, 3, 4; Dance Committee 3; Choir 1, 2, 3, 4; Science Fair 3, 4; Library 3, 4; French Club 4.
Future Plans: Interior Decorating



SHIRLEY NADEAU

Peewee

Commercial

Sweet little bundle of friendliness and humility . . . loves to dance.

Activities: Choir 1, 2, 3, 4.
Future Plans: Marriage



RICHARD O'BRIEN

George

Academic

Adds that extra something to any gathering . . . "We can't complain!" . . . promising teacher.

Activities: Sodality 3, 4; Newspaper 3, 4; Class Officer 2, 3; Dance Committee 1, 2, 3, 4; Dramatics 1, 2, 3, 4; Maine Speech Festival 3, 4; Prize Speaking Festival 3, 4; Science Fair 3, 4; Yearbook 3, 4; Public Speaking 1, 2, 3, 4; Boys' State 3; Intramurals 1, 2, 3, 4; Christmas Concert 1, 2, 3, 4.
Future Plans: College



MICHAEL O'DONNELL

Mike

Commercial

To know him is to appreciate him . . . quiet . . . helpful . . . quick witted . . . happy-go-lucky guy.

Activities: Science Fair 1; Intramurals.
Future Plans: Service



ELAINE OUELLETTE

Elaine

General

Little lady with a great deal of charm . . . optimistic and cheerful.

Activities: Glee Club 2.
Future Plans: Office work.



DAVID PARADY

Dave

Commercial

Reserved . . . have to know him to appreciate him . . . shy among strangers, humorous with friends.

Activities: Class Officer 1; Science Fair 1.



JERRY PARENT

Jay

Commercial

Loyal Jay . . . friendly and helpful to all . . . the sweeper-upper . . . loyal and true . . . a real man.

Activities: Class Officer 1; Dance Committee 1, 2, 3; Basketball 1; Highway Safety Council 1, 3; Intramurals.



ROSEMARY PEAVEY

Rosie

Academic

Ripples of laughter with little provocation . . . a smile
to brighten any day.

Activities: Choir 3; Science Fair 3, 4.
Future Plans: Nursing.



ANNETTE PELLETIER

Jane

Commercial

Unaffected . . . sincere . . . tactfully straight-forward
. . . glowing smile.

Activities: Glee Club 2, 4; Class Officer 4.
Future Plans: Secretary.



PAULETTE PHILLIPS

Polly

Academic

Burns midnight oil studying . . . kindles warmth wherever
she goes.

Activities: Sodality 2, 3, 4; Glee Club 1, 2, 3, 4; Honor
Society 4; Class Officer 1, 2, 4; Highway Safety Council
2; Science Fair 3, 4; CCD 1, 2, 3; Library 3, 4.
Future Plans: University of Maine.



EDWARD PINNETTE

Ted

General

Always ready for an argument . . . reserved in a crowd and soft spoken with his friends.

Activities: Dance Committee 1, 2; Baseball 1; Track 3; Intramural 1, 2, 3, 4.

Future Plans: Husson College.



DIANE POISSON

Tiger

General

Fingers flying over a typewriter . . . very capable and efficient worker.

Activities: Sodality 2, 3, 4; Glee Club 1, 2, 3; Dance Committee 3, 4; Highway Safety Council 2; Choir 1, 2, 3, 4; Yearbook 4; CCD 1; Alternate for Girls' State 3.
Future Plans: College



BONNIE POOLER

Bony

Academic

Bubbling Bonnie . . . petite bundle of humor and animation.

Activities: Sodality 2, 3, 4; Glee Club 2, 3, 4; Dance Committee 2, 3, 4; Choir 1, 2, 3, 4; Speech Club 4; Science Fair 4; Library 2, 3; Usher 3, 4.

Future Plans: Holy Ghost Hospital



JANICE POOLER

Poochie

Commercial

Natural comedienne . . . sharp and spontaneous wit
. . . unpredictable.

Activities: Glee Club 2, 3, 4; Choir 1.
Future Plans: Husson College



EDWARD RANKIN

Ed

Academic

Flies in from Hampden every day . . . quiet, reserved
manner mixed with a touch of shyness.

Activities: Science Fair 3, 4; Intramurals 2, 3.
Future Plans: College



JAMES RICHARDS

Rich

Academic

Impeccably groomed . . . strives for perfection . . .
punctuality is one of his virtues.

Activities: Sodality 4; Newspaper 3, 4; Dance Committee
2, 4; Dramatics 1, 4; Science Fair 3, 4; Yearbook 4;
Christmas Concert 3, 4; Intramurals 1.
Future Plans: University of Maine.



PATRICIA RIDEOUT

Patty

"Still water runs deep" . . . wonderful to know . . .
beautiful penmanship.

Activities: Sodality 2, 3; Glee Club 3; Dance Committee
4; Science Fair 3, 4.
Future Plans: Husson College.

Academic



ANNE ROBERTS

Funnybones

Sweet and earnest . . . humble and noble nature . . .
orderly in manner . . . neat in appearance

Activities: Dance Committee 4; Highway Safety Council
2, 3; Science Fair 3, 4.
Future Plans: Husson College.

Academic



EUNICE ROBICHAUD

Eun

Wonderful personality lies hidden until one knows her . . .
mischievous smile.

Activities: Dance Committee 3, 4; Science Fair 3, 4.
Future Plans: X-ray worker.

Academic



CAROL ROHRBACH

Carol Doone Commercial
 Fashion plate . . . neatness personified . . . always
 enjoys herself as others enjoy her.
 Activities: Glee Club 3, 4; Dance Committee 4.
 Future Plans: Business School



RICHARD ROONEY

Dick Commercial
 Staunch Crusader supporter . . . always friendly . . . has
 a contagious smile.
 Activities: Basketball 1, 2, 3; Science Fair 2; Football 4;
 Intramurals.



RONALD ROONEY

Ronnie Commercial
 Ron . . . easy-going . . . well-liked by all . . . takes his
 studies seriously.
 Activities: Baseball 1, 2, 4; Basketball 2, 3; Science Fair
 2; Intramurals.
 Future Plans: College.



MARY ROWE

Beth

Academic

Girl of the cameo . . . sensitive and constant . . . always lends a helping hand.

Activities: Sodality 2, 3, 4; Glee Club 4; Class Officer 3; Dance Committee 2, 3, 4; Highway Safety Council 2; Choir 1, 2, 3, 4; Speech Club 4; Science Fair 3, 4; CCD 1, 2; Library 2; Girls' State 3.
Future Plans: Mercy Hospital



MARILYN RUBY

Rube

Commercial

Loves and dares to be different . . . adds spirit to any gathering.

Activities: Glee Club 3, 4; Choir 4.
Future Plans: Convent.



JOHANNA RUDNICKI

Jo

Commercial

Reserved but ready to try anything once . . . sees the light side of life.

Activities: Glee Club 1; Choir 1, 2, 3, 4.
Future Plans: Marriage.



ROBERT RUSSELL

Bud

Strong of character . . . possesses a sense of humble self-assurance . . . calm, cool and collected.

Activities: Sodality 3, 4; Newspaper 3, 4; Class Officer 3; Dramatics 2, 3, 4; Science Fair 3, 4; Christmas Concert 2, 3, 4; Boys' State 3; Intramurals 1, 3; Highway Safety Council 1.

Future Plans: St. Francis Xavier.

Academic



TERRENCE SAMWAY

Sam

Academic

Personality plus . . . loves to play cards . . . never at a loss for words.

Activities: Sodality 3, 4; Newspaper 3, 4; Class Officer 1; Dance Committee 1, 2, 3, 4; Basketball 1, 2, 3; Dramatics 2, 3; Science Fair 3, 4; Christmas Concert 2, 3, 4.

Future Plans: Holy Cross.



SUZANNE SMITH

Sue

Commercial

Silent to see . . . poised manner . . . thoughtful and efficient helper.

Activities: Glee Club 4; Dance Committee 4; Choir 1, 2, 3, 4.

Future Plans: Office worker.



AUSTIN SPENCER

Spence

Diligent . . . gives appearance of being quiet . . . but don't let that fool you . . . not adverse to a bit of mischief.

Activities: Newspaper 3, 4; Science Fair 3, 4; Yearbook 4.
Future Plans: University of Maine.

Academic



DAVID SPENCER

Dave

Commercial

Loyal Dave . . . friendly to all . . . real Bapst Booster . . . always willing to help . . . reserved and soft-spoken.

Activities: Intramurals; Football 2, 3.
Future Plans: Navy



JAMES SPROUL

Jim

Commercial

Has a personality that lets him easily adapt to anyone . . . quiet in class until he has something witty to say.

Activities: Intramurals.
Future Plans: Electrician.



JAMES ST. PETER

Saint

Academic

Great asset to our basketball team . . . terrific sense of humor . . . hopes to master the French language.

Activities: Sodality 4; Newspaper 3, 4; Dance Committee 2, 3, 4; Baseball 2, 3, 4; Basketball 2, 3, 4; Science Fair 3, 4; Yearbook Staff 3, 4; Christmas Concert 3.

Future Plans: St. Michael's



MARGARET SULLIVAN

Sully

Academic

Optimistic and delightful friend . . . Let's do something different.

Activities: Sodality 1, 2, 4; Glee Club 4; Dance Committee 4; Choir 1, 2, 4; Speech Club 4; Science Fair 4.

Future Plans: Holy Ghost School of Nursing.



PHYLLIS TANNER

Petunia

Commercial

Always cheerful, light-hearted . . . quiet but always smiling.

Activities: Glee Club 1, 2, 3, 4; Choir 1, 2, 3, 4.

Future Plans: Practical Nursing.



PATRICIA THERIAULT

Tiger

General

Avid reader and cook . . . never too busy to console or advise a worried friend.

Activities: Glee Club 1, 2, 3, 4; Choir 1, 2, 3, 4.

Future Plans: Telephone Company.



JOSEPH THIBODEAU

Frenchy

Academic

Daily commuter from Bradley . . . gift for making and keeping friends . . . sense of humor and pleasant disposition

Activities: Science Fair 1.

Future Plans: Chain Store Manager.



SHEILA THORNE

She She

Commercial

She She's laughter is contagious . . . fun-loving and devilish.

Activities: Glee Club 1, 2, 3; Choir 1, 2, 3, 4.

Future Plans: Office Work.



JANICE VEILLEUX

Jan

Academic

Immeasurable capacity for understanding people . . .
tomorrow's social worker.

Activities: Sodality 2, 3, 4; Glee Club 1, 2, 3, 4; Dance
Committee 3, 4; Highway Safety Council 2; Choir 1, 2,
3, 4; Cheerleader 4; Maine Speech Festival 3; Science
Fair 3, 4; CCD 1; French Club 4.
Future Plans: College.



CAROLYN WEBSTER

Carolyn *Georgia Webster* Academic

Welcome addition senior year . . . pert brunette found
chatting in caf.

Activities: Sodality 4; Glee Club 4; Cheerleader 4;
French Club 4.
Future Plans: College.



GEORGIA WEBSTER

Sidney *Carolyn Webster* Academic

Always punctual, always prepared, always friendly . . .
did you do your Biology?

Activities: Dance Committee 4; Highway Safety Council
2; Science Fair 3, 4; Library 1, 2, 4.
Future Plans: Husson College.



RONALD YORK

Ronnie Academic

Reserved personality . . . quiet reserved in all he undertakes, but never fails to chuckle or smile when the time arises.

Activities: Science Fair 3, 4.
Future Plans: University of Maine.



ANN WILLIAMS

Willie Academic

Unpredictable . . . fun-loving . . . sophistication with a dash of innocence.

Activities: Glee Club 3, 4; Speech Club 4; Science Fair 3, 4; French Club 4.
Future Plans: University of Maine.



SYLVIA YORK

Syl Commercial

Enthusiastically ready to try anything at least once . . . creamy complexion . . . warm personality.

Activities: Sodality 2, 3, 4; Class Officer 3; Dance Committee 1, 2, 3, 4; Highway Safety Council 2; Choir 1, 2, 3, 4; Cheerleader 1, 2, 3, 4; Science Fair 1; CCD 1; Alternate Girls' State 3.
Future Plans: Holy Ghost.



S O C I A L S



Mary Ann Day and Mike Baldacci crown the new king and queen of the Freshman Reception, Rick Taylor and Dianne LeBritton.



The Coronation Dance



Geraldine Gagnon, Terence King, Theresa McLoughlin, Stephen Zauche keep feeding the juke box.



The long and the short of it.



Who turned off the lights?

TURKEY TROT



... and the band played on.



Alright, already, snap it! We want to dance.



The beauties and the beasts.



Oh! To be young again.



You think I'm kidding?



The pause that refreshes!

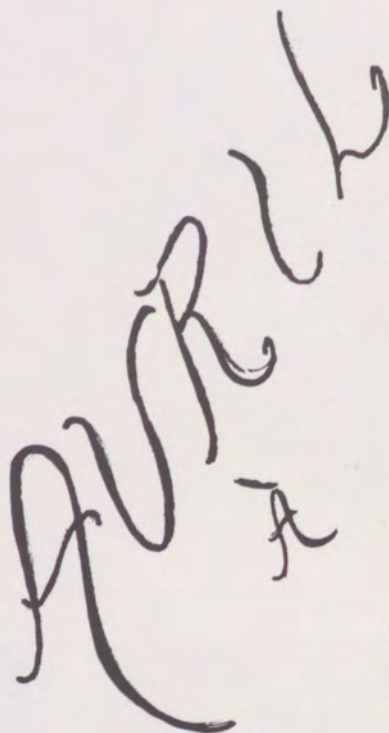


"Ouch! My aching feet!"

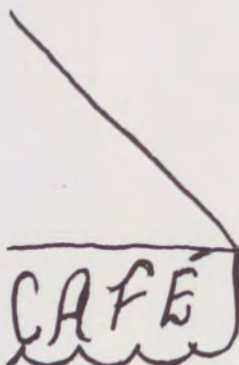


"Happy?"

82



"Beaming Bostonians"



"Belles and Beaux"



"Our table, please"



Togetherness!



PARTY'S



"Boo!"



"Dancing in the Dark"



"Sleeping Beauty!"



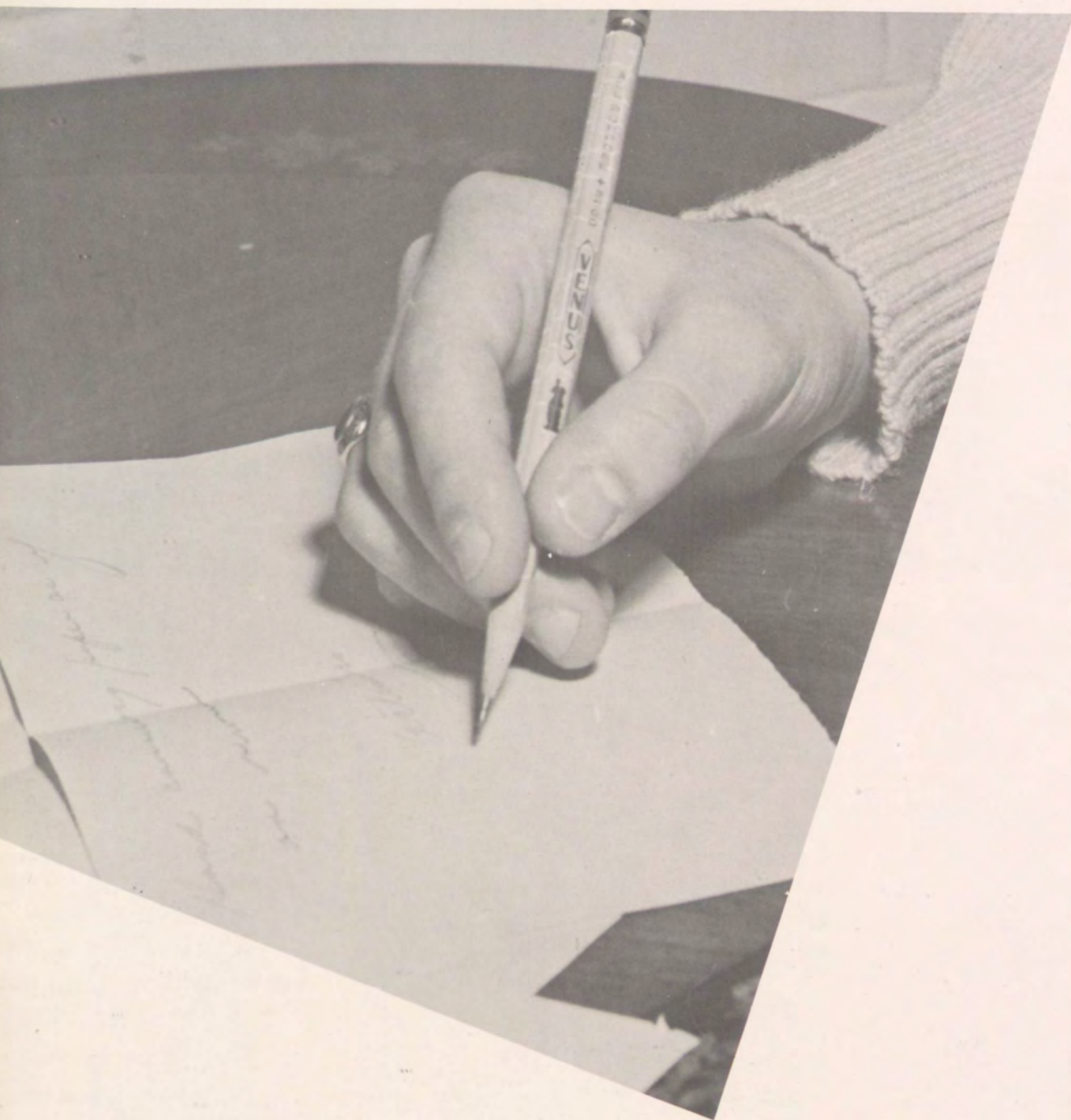
SnowBA



LL PROM







A C T I V I T I E S

Retreat



In Progress



J. Keney, R. Brooks, A. Kelly and P. Colburn listen intently as Father Thibodeau gives a private conference after the retreat.



D. Poisson, J. Macdonald, N. Hart, B. King, and B. Lucas have a precept explained by Father Curran.

Love God above all things and accept His almighty will. This was the central thought of a very enlightening girl's retreat conducted by Father Curran. Each conference was begun with a silent prayer to strengthen our belief in God's presence in the Holy Eucharist. Following the conference, Father celebrated High Mass and Benediction. Frequent reception of the sacraments and attentive listening gave evidence of a very successful retreat.

Father Thibodeau, a secular priest, emphasized the importance of religion in a good Catholic marriage at the boy's retreat this year. He seemed to be a mild, patient man but when he spoke you could tell he meant business. His eloquence as a speaker was an asset many a man would envy him for. Father Thibodeau is a dedicated man with a big heart and a good word for everyone.



ST. MARY'S CHOIR

Seated, left to right: D. LeBritton, D. Drew, G. Guidemore, J. Macdonald, D. Dixon, L. Farwell, S. Glidden, A. LaFlamme, P. Spellman, N. McCarthy, L. Perry, M. Gibbons, A. Finnegan.

Second row: S. M. Pius, M. E. Armitage, Z. Rious, C. McCluskey, L. Poisson, G. Ryan, B. Pooler, M. LeBlanc, M. Driscoll, P. Kinney, C. Spellman, J. Lagrange, D. Poisson, R. Rice, A. Dwyer.

Third row: M. Farwell, P. Winchester, J. Rennebu, J. Donovan, S. Mishou, C. DeGrasse, M. McCloskey, C. Brown, B. Murray, M. Perry, L. Rand, S. Smith, S. Williams, C. Trainor, S. LeBritton.



ST. JOHN'S CHOIR

Seated, left to right: P. Darling, P. Theriault, P. Tanner, P. Landry, N. Naha, P. Rudnicki, J. Savage, K. Knowles, M. E. Dougherty, S. Robinson, S. Nadeau, C. Richard, M. LeVasseur.

Second row: R. Harrison, J. Veilleux, S. Thorne, C. McKenney, M. Rowe, N. Hart, C. Savoy, S. McDonnell, P. George, S. York, J. Gagnon, A. Sheehan, M. Golden, S. M. Rose.

Third row: A. Carparelli, P. Flanagan, M. Ruby, E. Greer, J. Bishop, J. Martin, C. Carparelli.

SCIENCE





FAIR

BIOLOGY

HEALTHY BIRCH

GLEE



GLEE CLUB 3-4

Seated, left to right: P. Theriault, C. Webber, C. Rohrbach, J. Veilleux, P. Tanner, I. Fontain, P. Phillips, K. Mullaney, A. Cosette, M. E. Armitage, C. Webber, P. Darling, C. Guidemore, B. McIninch.

Second row: S. M. Pius, B. Pooler, R. Rowe, R. Thibodeau, J. Savage, J. Rannebu, J. Pooler, M. Rowe, W. Towle, S. Mishou, V. Hart, C. McCluskey, C. DeGrasse, P. Kenney, M. Richard, J. Gagnon, A. Sheehan, M. Fitzpatrick, S. Smith.

Third row: A. Pellitier, S. Adams, J. Martin, M. Robinson, A. Williams, C. Brown, M. Sullivan, M. E. McNamara, M. Ruby, M. E. Angley, L. L. Whittemore, S. McDonnell, B. Murray, C. Littlefield, M. Amaral, C. Savoy, S. Fournier, N. McCarthy.

GLEE CLUB 1-2

Seated, left to right: Y. Edmonds, K. Callahan, S. Colman, A. LaFlamme, E. Rohrbach, S. O'Brien, J. Lucas, S. LeBritton, D. Clement, B. Cyr, S. Dacey, V. Berry, J. Estey, K. Knowles, M. E. Dougherty, C. MacDougall, L. Poisson.

Second row: M. J. Lupo, G. Gagne, P. Washburn, M. Gibbons, G. Clish, C. Richard, A. Murtha, C. Robichaud, C. Currier, S. Apostoloff, R. Hayden, S. Corey, R. Rogan, D. LeBritton.

Third row: R. Pinette, J. Skillin, E. Chamberlain, B. Arnott, M. LeBlanc, S. Doyle, M. Golden, P. Kenney, D. Bell, G. Ryan, M. A. Day, J. Commeau, M. Houlihan, N. Nagra, P. Winchester, A. Dwyer, Z. Rioux, J. Stover, M. Cassily.

Fourth row: K. Angley, P. Latno, M. McCloskey, L. Rand, J. Robinson, S. Beahan, D. Dee, V. Fullenkamp, R. Plank, B. Focht, P. Cochrane, S. Johnson, P. George, J. Smith, T. McLaughlin, M. Focht, M. Soucy.

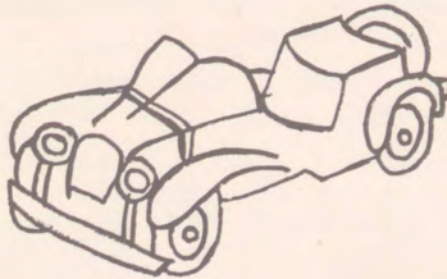
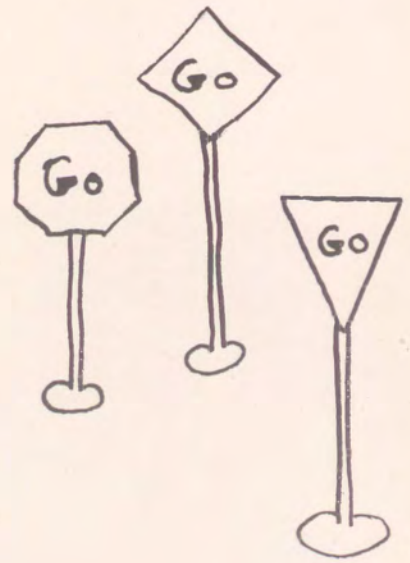


CLUB



DRIVER EDUCATION

Standing, left to right: D. Poisson, V. Hart, P. Kinney.



DRIVER EDUCATION

Seated, left to right: A. Bard, M. Shannon, R. Forman, J. Baker, F. Saba, L. McGuire, E. Rice, M. Enman, P. Trainer.

Second row: T. Largay, D. Hart, C. Dunn, W. Maxwell, R. Hansen, A. Martel, R. Laliberte, M. Kelly, S. Cust, J. McCloskey, D. McCann, Bro. Luanus, C.F.X.

SODA



SODALITY

Seated, left to right: J. Dougherty, T. Constantine, T. Morse, R. O'Brien, R. Russell, J. Kenney, J. Doyle, P. Colburn, D. Fernald, D. Hayden, J. Rennebu.

Second row: R. Palmieri, T. Duffy, J. Soucy, R. Petit, G. Grisby, G. Carroll, W. Willette, R. Field, J. Sekera, Bro. Benilde, C.F.X.

Third row: J. Blake, M. Crawford, H. McNally, J. Doran, M. McNally, J. McGrath, J. Houlihan, R. Commeau, J. Richards, T. Samways, T. Churchill.



SODALITY PROBATIONERS

Seated, left to right: E. Cormier, L. Savoy, J. Coffin, H. Black, P. Eggert, A. Martel, T. Shanley, R. Taylor, R. Smith, R. Tozier.

Second row: E. Hopkins, R. Hansen, J. McKee, P. McGuire, T. Dudek, M. Lacadie, F. Clancey, R. Forman, M. Shannon, T. Smith.

Third row: R. Driscoll, P. Trainor, P. Baker, J. Lacadie, P. Lamoureux, T. Parent, P. Enman, E. March, E. Charette, F. Sturgeon, M. Dubay.



LITY

OUR LADY OF GOOD COUNSEL



SODALITY

Seated, left to right: E. Merritt, B. Corey, J. Goodreau, C. Webber, B. Pooler, J. Veilleux, J. Macdonald, P. Phillips, S. Adams, K. Mullaney, G. Guidemore, L. Perry, S. Glidden.

Second row: D. Poisson, M. Driscoll, J. Donovan, J. Donze, S. Cassily, J. Gagnon, C. DeGrasse, S. York, W. Towle, M. Fitzpatrick, C. Spellman, B. Blinn, M. Richard, S. M. Jeanne.

Third row: R. Harrison, M. Farwell, S. McDonnell, V. Hart, B. Murray, C. Brown, C. Gillis, M. E. Angley, J. Martin, A. Carparelli, M. Rowe, B. Lucas.



PROBIES

Seated, left to right: K. Angley, J. Estey, M. McInnis, M. Soucy, K. Knowles, M. E. Dougherty, D. Dixon, R. Pinette, A. Finnegan.

Second row: S. M. Jeanne, M. L. Rist, J. Skillin, A. Dwyer, M. McClay, J. Smith, M. Cassily, M. Dragon, Y. Edmonds.

Third row: A. Dandaneau, C. Carparelli, S. Johnson, P. Cochrane, P. Flanagan, M. A. Day, J. Lagrange.

Yearbook Staff



Left to right: Mr. Olive, N. Hart, H. McNally, Bro. Matthias, C.F.X.



YEARBOOK STAFF

Sitting, left to right: N. Hart; co-editor, H. McNally; co-editor, J. Baker.

Second row: B. Lucas, Bro. Matthias, C.F.X.; Moderator, B. King, A. Finnegan, D. Poisson, J. St. Peter, J. Macdonald, R. O'Brien, M. Rowe, A. Spencer, E. Greer.



NEWSPAPER

Seated, left to right: J. Doran, Bro. Matthias, C.F.X., H. McNally, R. Russell.
Second row: E. Baker, T. Lavoie, T. Morse, M. LaMarche, J. Kenney, J. Richards, T. Constantine, M. Crawford, A. Spencer, R. O'Brien, R. Barrett, J. St. Peter, P. Colburn, T. Samway.

Left to right: H. McNally, J. Doran, M. Crawford, R. Barrett, R. Russell.



KNIGHT'S NEWS



NATIONAL HONOR SOCIETY

First row: B. King; President, J. Macdonald; Vice-President.

Second row: S. M. Raymond, I. Fontaine, P. Phillips; Secretary, J. Martin; Treasurer.



FRENCH CLUB

First row: C. Webber, B. McNich, L. Perry, A. Williams, A. Sheehan, J. Savage.

Second row: S. M. Louis, R. Rice, J. Veilleux; Secretary, J. Gagnon, W. Towle, N. Hart; President, S. McDonnell; Vice-President, C. Brown, L. L. Whittemore, M. E. Angley, Treasurer, A. Carparelli, S. Cassily, C. Verow, M. Smith.

F
R
E
N
C
H



C
L
U
B

P
I
C
O
R
A
N
N
E
S



C
L
U
B



SPEECH CLUB

Seated, left to right: M. J. O'Connell, J. O'Connell, A. Sheehan, M. E. Angley, J. Gagnon; Secretary, A. Carparelli; Vice-President, B. Murray; President, M. Fitzpatrick; Treasurer, M. Rowe, K. Angley, S. Glidden.

Second row: S. M. Raymond, B. Corey, S. Dacey, C. Spellman, A. Dwyer, S. Cassily, P. Kinney, M. A. Day, M. Cassily, Y. Edmonds, R. Rice, J. Estey.

Third row: M. Driscoll, A. Williams, S. McDonnell, S. MacDougall, C. Brown, P. Cochrane, M. Sullivan, M. Perry, C. Verow, J. Donze.



KEY CLUB

Seated, left to right: J. Dougherty, P. Colburn, K. Montford, R. Barrett, J. Regan, P. Lafoureux, T. Constantine, J. Sekera, D. Hayden, M. LaMarche.

Second row: E. Baker, R. Tozier, J. Souch, H. McNally, J. Doran, L. Savoy, T. Duffy, A. Kelly, Bro. Benilde, C.F.X.

Third row: J. Parent, R. Dee, E. Beausang, E. Pinnette, W. Willette.



C. C. D.

Seated, left to right: C. McKenney, B. Arnott, V. Fullenkamp, R. Plank, M. Spruce, A. Hicks, L. Rand.

Second row: S. LeBritton, S. MacDougall, D. Bell, V. Berry, N. Nahra, L. Edmonds, G. Ryan, S. M. Dominica.

Third row: M. Gibbons, C. Rice, J. Arsenault, S. Colman, L. Harrold, J. Bateman, E. Merritt.

Debating



VARSITY, first row, left to right: Brother Simeon; Coach, Gerald Grigsby, Michael Shannon, Robert Barrett.
Second row: James Regan, Edward Farwell.



"Furthermore . . . and then again"
 . . . but on the other hand . . ."



NOVICE DEBATERS, first row, left to right: Edward Marsh, Mark Dubay, Robert Smith, Lawrence Savoy.
Second row: Brother Simeon, Coach; Jay McKee.

D RAMATICS



"That was my line, thief!"



"Remember what I taught you at rehearsals."



THE
FARCE
OF
WORTHY
PIERRE
PATELIN



"What's going on down there?"

"..... what's my next line?"



"Wouldn't you like to know!"



"But the price of bologna can't go up!"



"What a revoltin' development this is!"

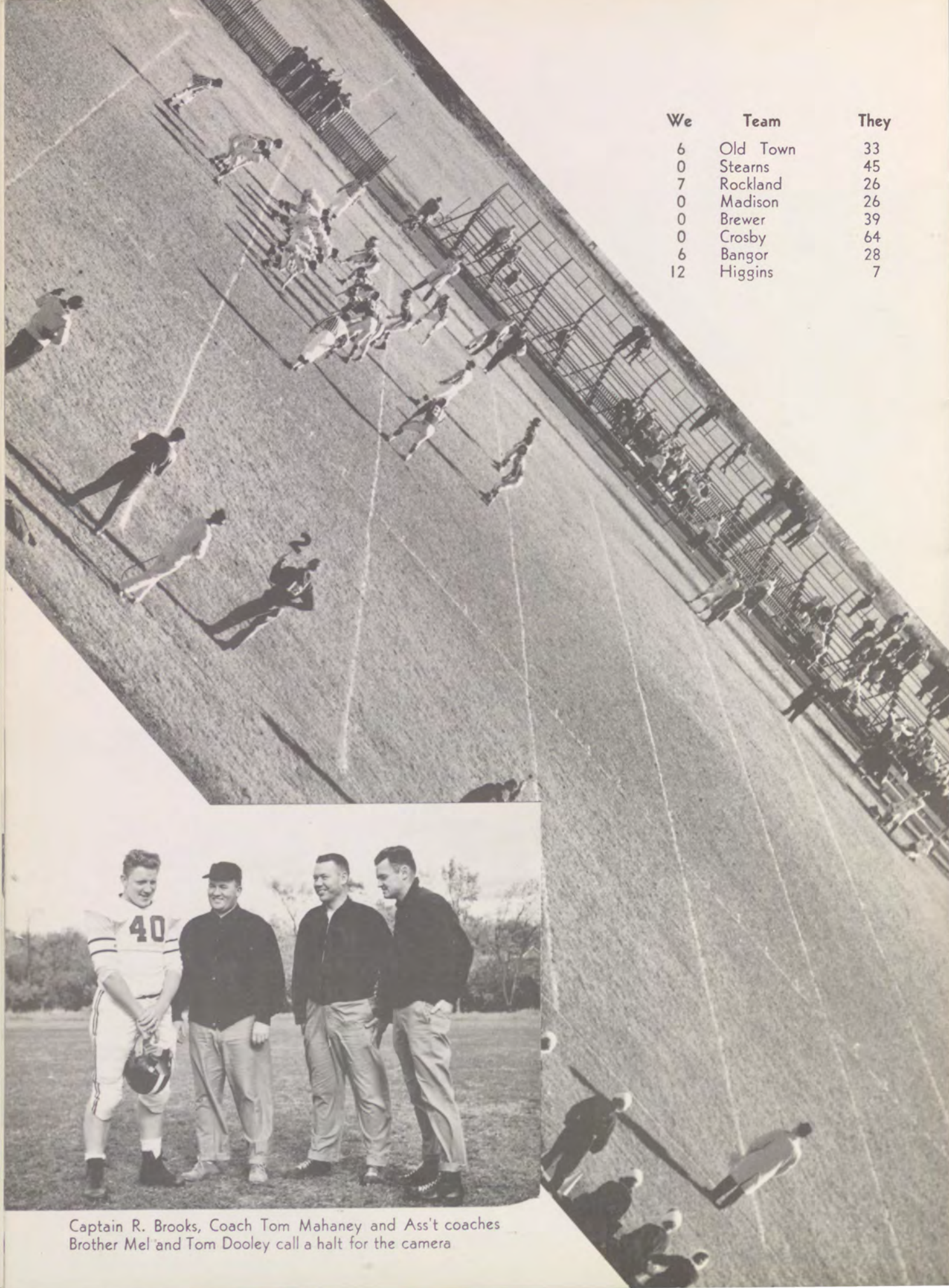


"And who was supposed to
buy the bread?"



S P O R T S

We	Team	They
6	Old Town	33
0	Stearns	45
7	Rockland	26
0	Madison	26
0	Brewer	39
0	Crosby	64
6	Bangor	28
12	Higgins	7

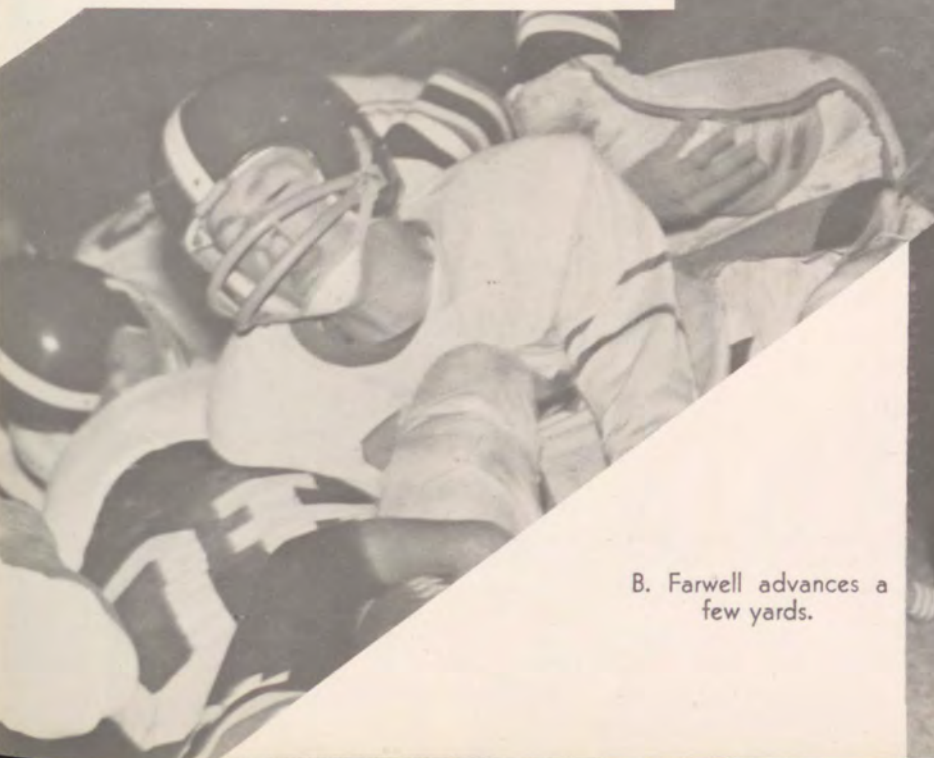


Captain R. Brooks, Coach Tom Mahaney and Ass't coaches Brother Mel and Tom Dooley call a halt for the camera



Front: D. Hayden, R. Palmieri, T. Morse R. Brooks, E. Gray, K. Hicks, M. Baldacci, G. Carroll, R. McPherson, J. Baker, E. Farwell, J. Lavin.

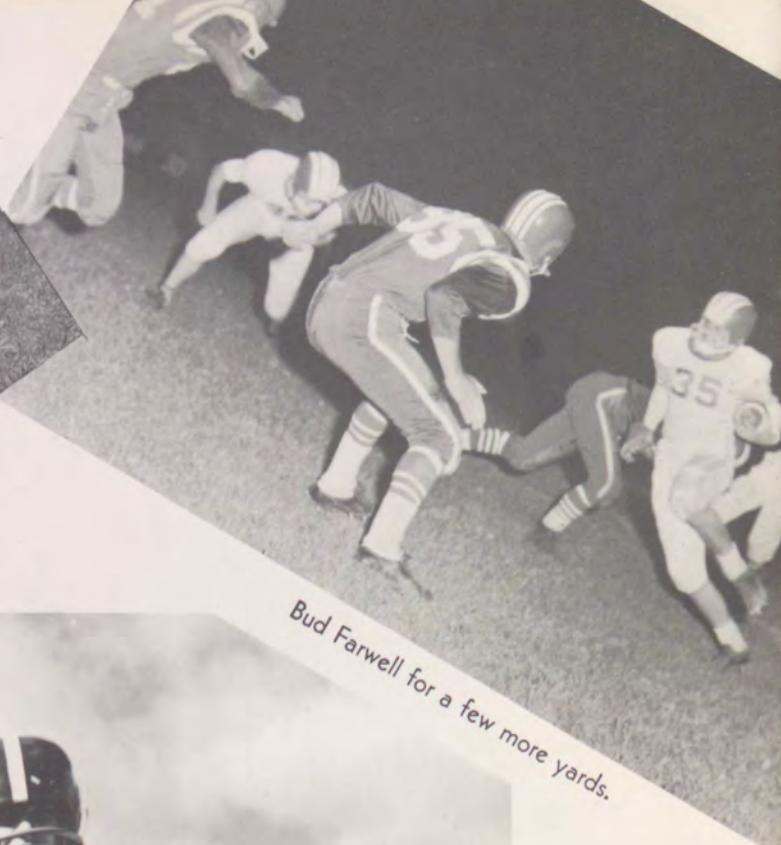
Back: Ass't Coaches Tom Dooley and Brother Mel, J. Rennebu, J. Leeman, R. Rooney, J. Coffin, T. Shanley, R. Laliberte, J. McCloskey, D. Mcdonald, T. Duffy, J. Dougherty, Manager M. Donovan, Coach T. Mahaney.



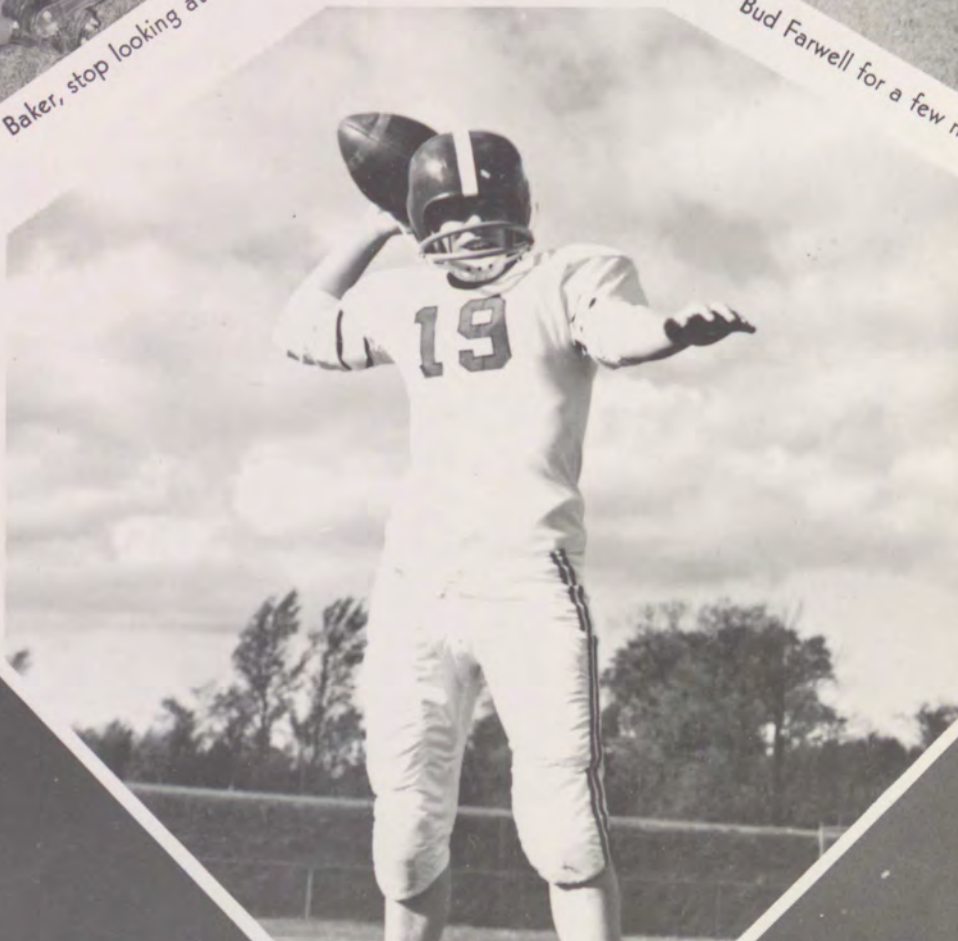
B. Farwell advances a few yards.



Baker, stop looking at the camera!



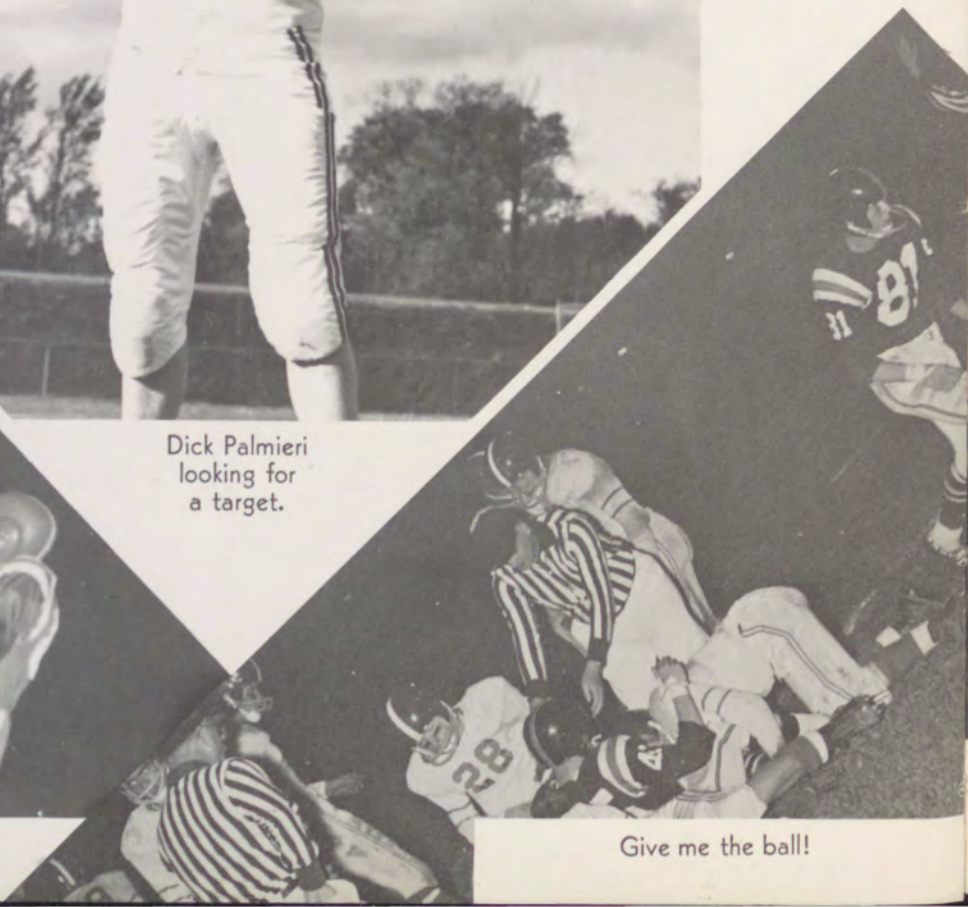
Bud Farwell for a few more yards.



Dick Palmieri
looking for
a target.



Farwell tries again.



Give me the ball!



We		They
48	Waterville	64
27	Rockland	56
50	Brewer	60
53	Presque Isle	72
42	Caribou	68
49	Orono	57
29	Old Town	69
49	Bangor	65
53	Waterville	62
47	Caribou	59
63	Old Town	87
50	Presque Isle	67
37	Bangor	47
67	Madison	47
53	Brewer	50
45	Orono	60



Left to right: Brother Linus, C.F.X., athletic director; Brother Mel, C.F.X., J. V. Coach; Mr. Paul Dooley, Assist. J. V. Coach; Brother Cronan, C.F.X., Freshman Coach; Mr. Tom Mahaney, Varsity Coach.



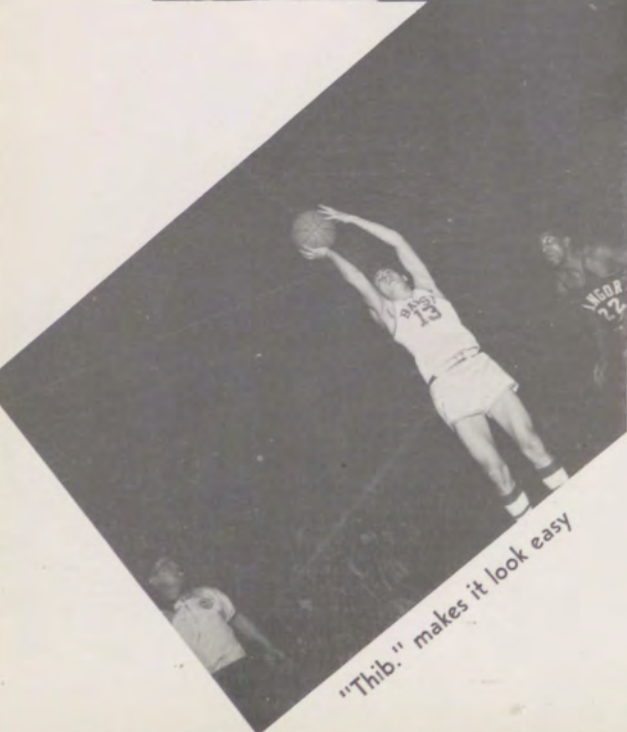
Dave O'Connell hits for two more as Joe Kenney looks on.



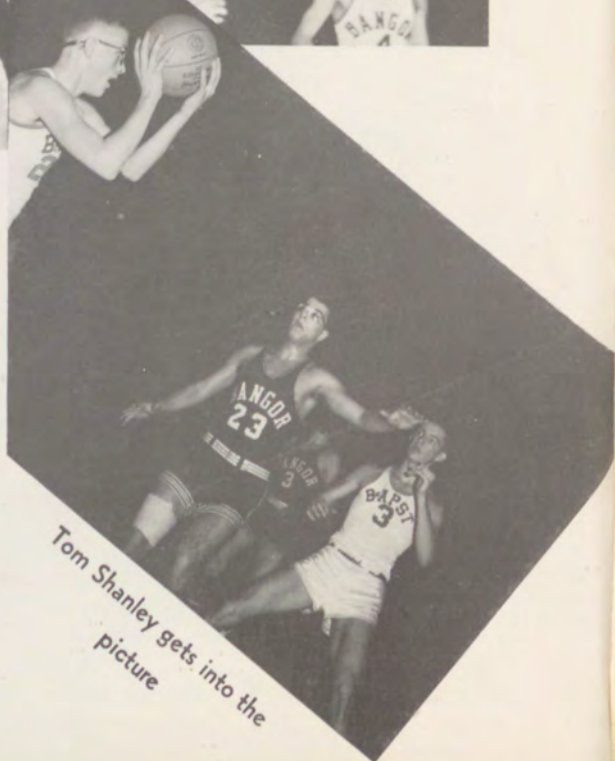
"Here goes nothing" says Nick Carperille



Dave O'Connell driving hard



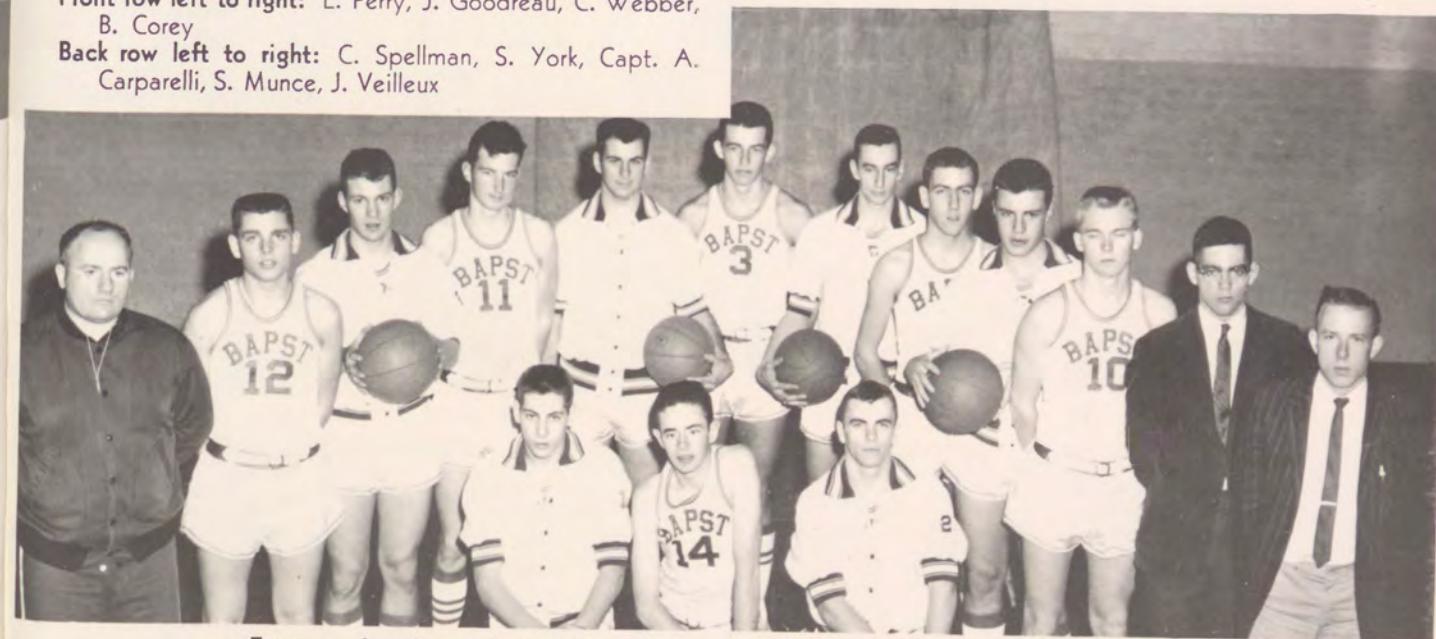
"Thib." makes it look easy



Tom Shanley gets into the picture



Front row left to right: L. Perry, J. Goodreau, C. Webber, B. Corey
Back row left to right: C. Spellman, S. York, Capt. A. Carparelli, S. Munce, J. Veilleux



Front row kneeling, left to right: R. Thibodeau, Capt. J. St. Peter, J. Blake.
Standing left to right: Coach Tom Mahaney, J. Kenney, E. Farwell, T. McLaughlin, E. Dean, J. McGrath, M. McNally, J. Houlihan, H. Black, D. O'Connell, Managers, J. Lavin, M. Donovan.



Burying our thirteen losses before the Bangor game

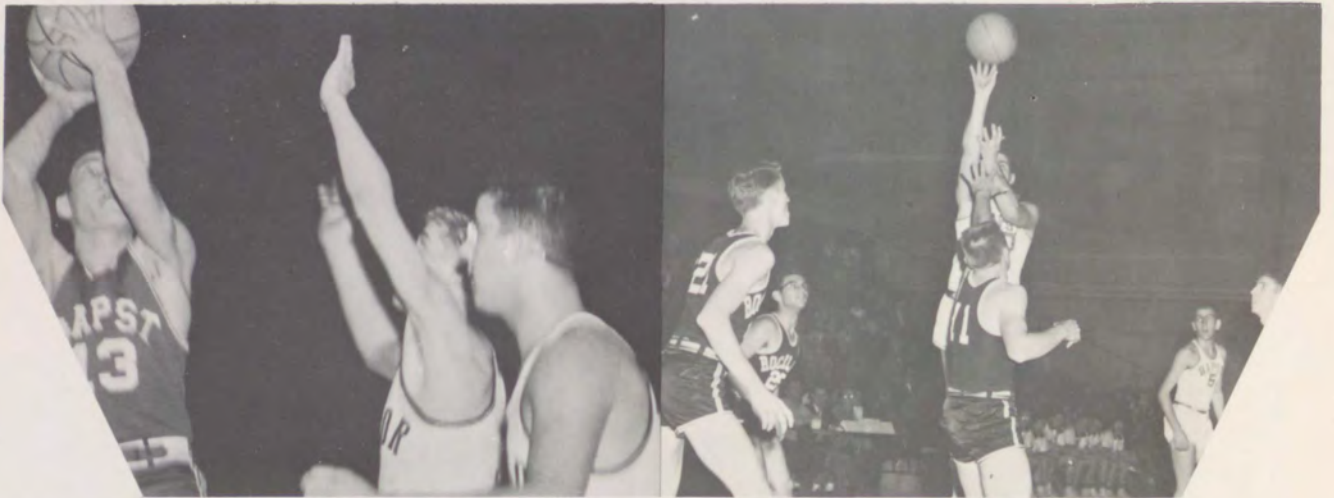


"Should I shoot" wonders Ron Thibodeau



Jim McGrath can do it too.

"Don't get wise" warns Tom McLaughlin



Ronnie puts us ahead of Bangor

Big Earl gets off his feet for two points



"Nobody does that twice" growls Joe Kenney



Up John Bapst — Down Bangor



A tense moment for the boys on the bench



Davy socres again as we surge ahead of Bangor



Jim McGrath and Hubie Black get into position for a rebound



It's a Bapst ball



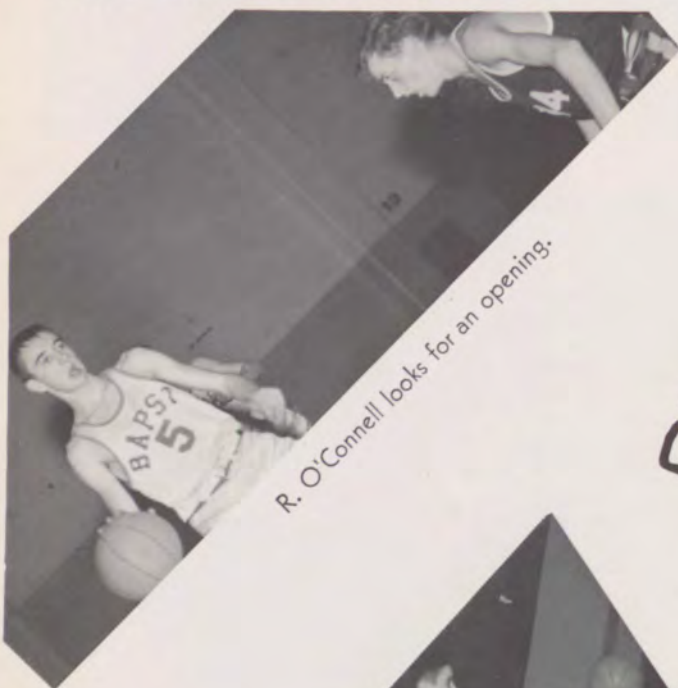
Fight, Fight — Fight, Fight, Fight



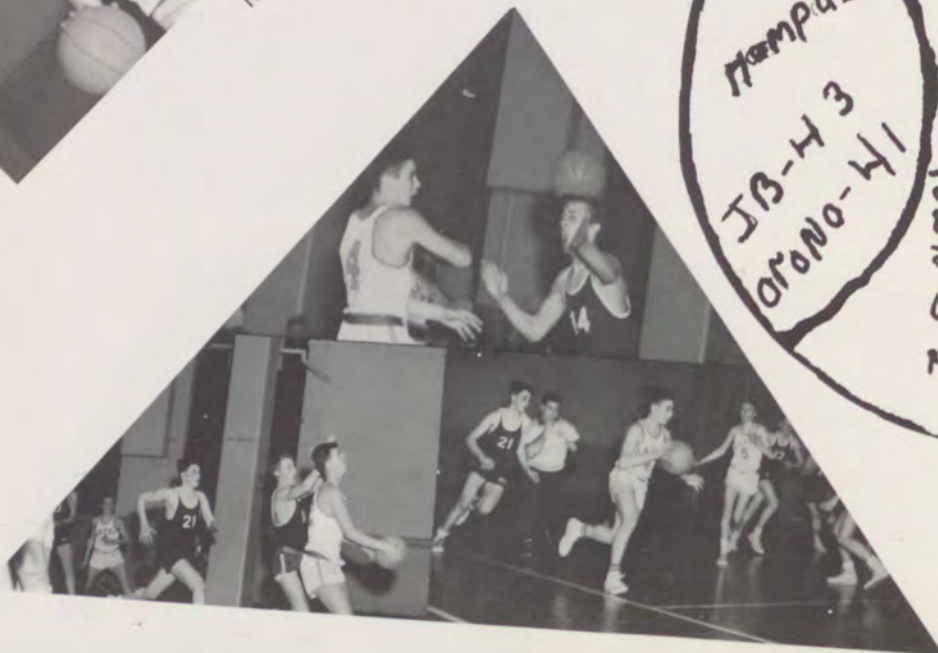
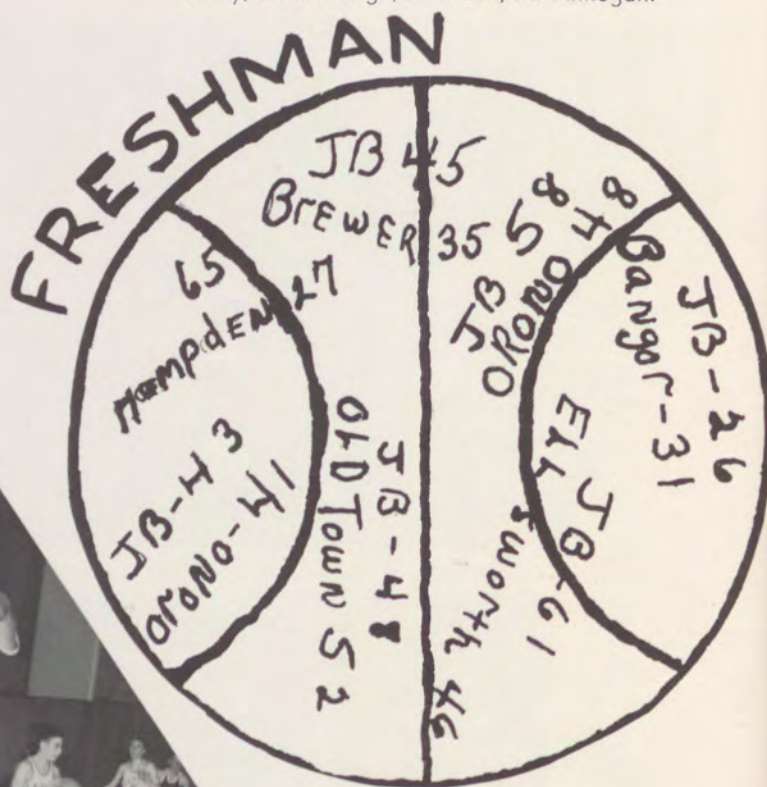
Kneeling, left to right: M. McGinnis, M. Skilling, P. Baker, E. Hopkins, D. Witham.
 Standing: Brother Cronan, C.F.X., Coach; T. Parent, E. Price, R. Taylor, M. Maxwell, P. Eggert, R. O'Connell, R. Soucy, M. LeBlanc, T. Bourbon, Mgr. E. Rice.



J. V. CHEERLEADERS, left to right: A. Dandaneau, M. McClay, J. LaGrange, D. Dixon, A. Finnegan.



R. O'Connell looks for an opening.





Kneeling, left to right: James McDonald, Mike Lacadie, Tom Shanley, Don Macdonald.

Standing: Brother Mel, C.F.X., Coach; John McCloskey, Bill McCarthy, Rod Chisolm, Mike Baldacci, Al Martel, Dominic Soucy, Jim McPherson, John Lavin, Mr. Paul Dooley, Coach.

We

34	Waterville
61	Rockland
47	Brewer
63	Winterport A.A.
44	Orono
35	Old Town
57	Bangor
73	Waterville
65	Winterport A. A.
34	Old Town
53	East Corinth
48	Bangor
66	Madison
51	Brewer
67	Orono

They

58
51
41
61
42
58
40
60
55
67
67
55
29
36
46



Shanley



Soucy



Baldacci



McDonald



McCarthy

USHERS



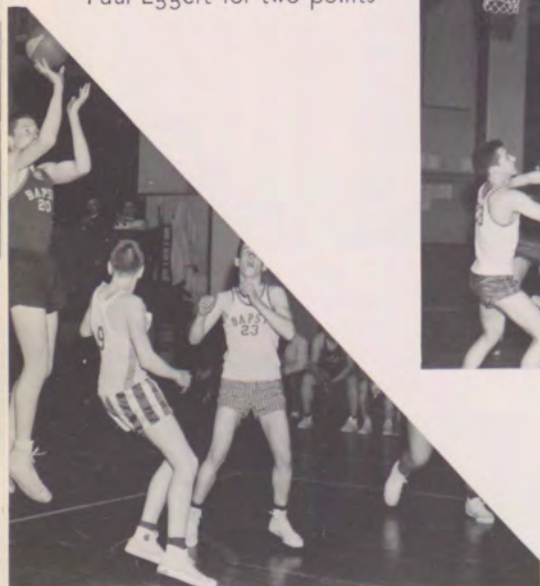
USHERS, left to right: Mary Angley, Mary Ellen McNamara, Mary Fitzpatrick, Roberta Rowe, Bonnie Pooler, Mary Ellen Armitage, Carol Rohrbach, Carol Brown.



Paul Eggert for two points



Mad Scramble



Up and In

Senior League All Stars:

- G. J. Kenney
- G. E. Gray
- C. E. Dean
- F. D. Soucy
- F. R. Dee

INTERMURALS



Senior League Champs: Standing, left to right: J. Sekera, J. Osgood, D. Soucy, Captain T. Samway; Kneeling: T. Morse, P. Hansen R. Dayen, R. King.



Hey! Don't bother me now, says official score keeper, Brother Linus.



Hubie Black on a drive



Who got that one?



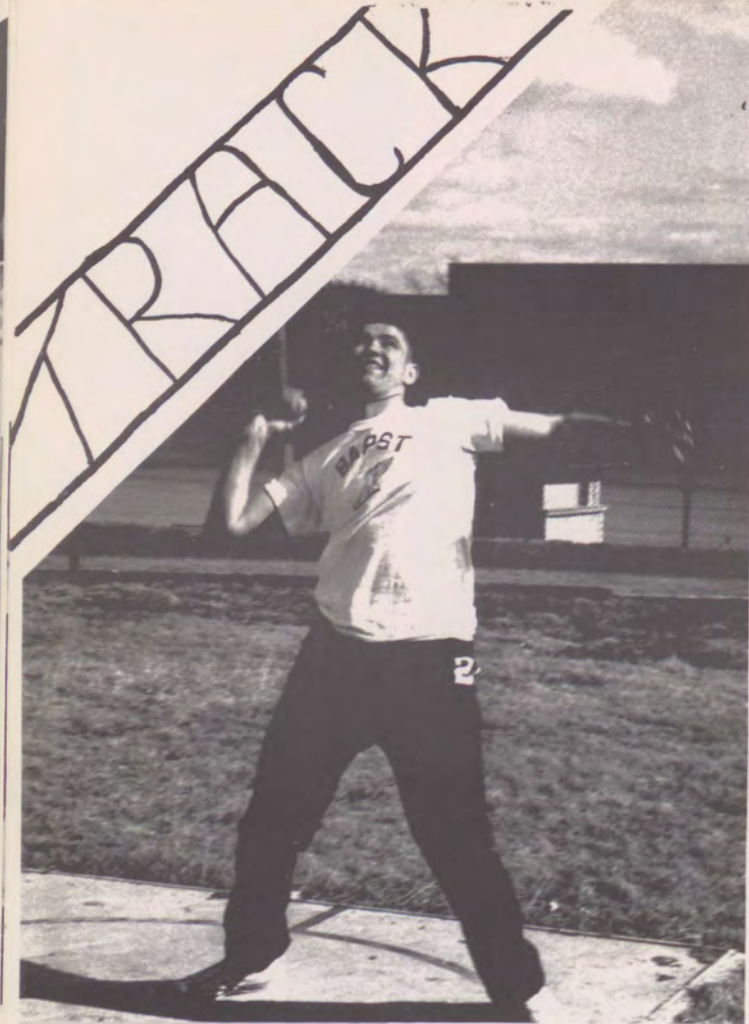
Ballet!



INTERMURALS



Junior League Winners: Standing, left to right: Capt. Wm. McCarthy, P. Eggert, J. Parlee, A. McGrath, J. McCarthy, D. Witham and G. Shorette.





Kneeling, L. to R.: J. Beard, S. Buckles, E. Farwell, A. Martell, M. McNally, J. Lavin, W. McCarthy, R. Walker, J. O'Connell, P. Eggert, T. O'Donnell, J. Regan and P. Brooks. **Standing:** Coach Paul Dooley, A. Nichols, M. Scruggs, A. Finnegan, R. Taylor, R. Zuch, W. Willette, M. Baldacci, K. Hicks, G. Carroll, R. Barrett, K. Montford, D. Hayden, G. Lucas, R. Hanson, A. Roy and Ass't coach Brother Mel.



Bud Farwell, Pinky Regan and A. Martell are caught at the start of the 440.



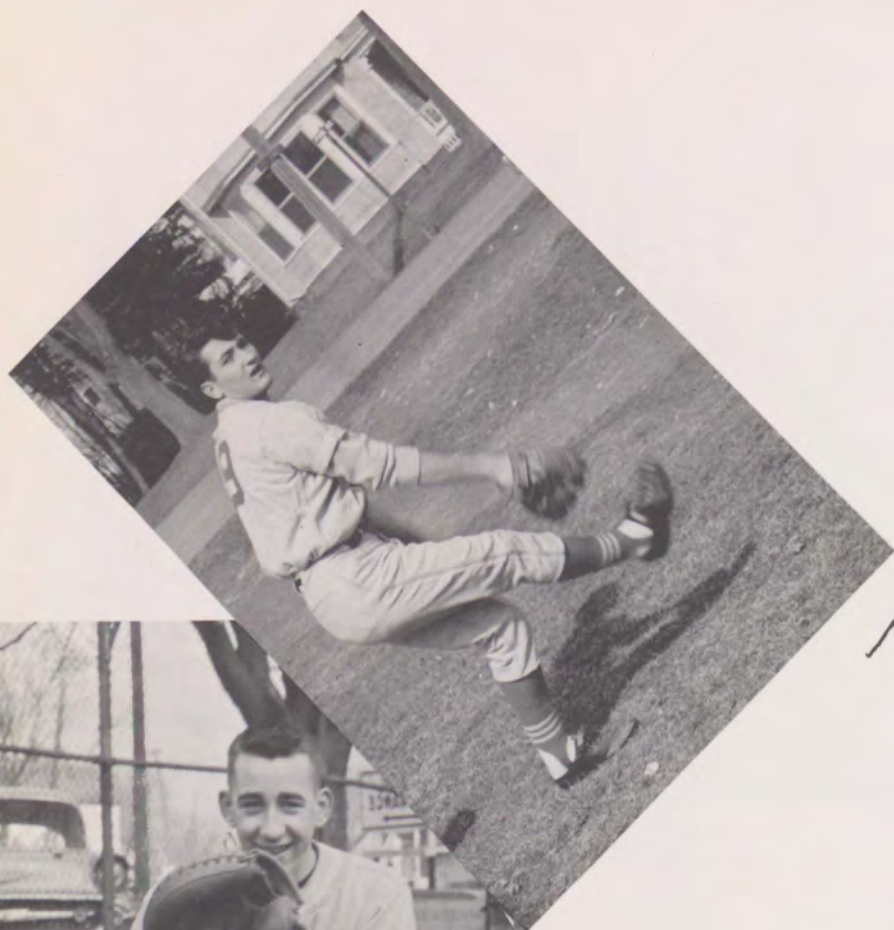
A. Nichols, P. Eggert, W. McCarthy, and A. Finnegan watch the running broad jump with interest and apprehension.



Bill Willette shows the graceful form of the pole vault to M. Scruggs, T. O'Donnell, D. Hayden and K. Hicks.

19

BAPS





Kneeling, L. to R.: M. McInnis, P. Johnson, R. Soucey, D. Parke, W. Maxwell, M. McGrath, T. Parent, M. Shannon, P. McManus and D. Witham. **Standing:** Coach Tom Mahaney, J. McCloskey, R. Rooney, R. Chisholm, D. McDonald, N. Carparelli, R. Palmieri, P. Colburn, E. Grey, J. McGrath, J. Houlihan, M. Lacadie, J. Baker, T. Morse and Manager R. Field.



Slugging star Jim McGrath



Fielding star Tom Morse



It's like this . . .



Palmieri getting a few pointers from Coach Mahaney.



A lot of pep on the bench!



You can snap the picture anytime.

U
N
D
E
R
C
L
A
S
S
M
E
N





IC: Front row, D. LeBritton, D. Drew, C. Richard, S. Jordan, E. Fernald, G. Jones, C. Currier, R. Hayden, S. Corey, B. Jo Rogan; 2nd row, P. Spellman, L. Poisson, P. Pooler, V. Smith, Sister Mary Irene, S. Doyle, B. Keeler, V. Yatsko, B. Bassett; 3rd row, D. Verow, B. L. Cyr, M. Guthrie, C. Trainor, T. McLaughlin, B. Prescott, M. LeBlanc, M. Golden, Z. Rioux, S. Dacey, E. Rohbach.



IA: Front row, K. Callahan, D. Hughes, L. Harrold, J. Jenni, D. Clement, S. O'Brien, S. LeBritton, S. Sullivan, S. Flanigan, G. Gagne; 2nd row, N. Nahra, C. MacDougall, K. Crowley, Sister Mary McAuley, K. Salter, R. Rudnicki, V. Berry, B. LaFontaine, M. McCloskey; 3rd row, S. Williams, L. Edmonds, K. Haesecke, D. Shropshire, V. Fullenkamp, M. Spruce, L. Hoffer, E. Clark, D. Dee, D. Bell, G. Ryan, P. Kenney.



IA: Front row, J. Bateman, G. Clish, M. Flanagan, C. McKenny, L. Farwell, B. Arnott, R. Doherty, A. Murtha, C. Rice, D. LaClair; 2nd row, L. Marsh, M. Houlihan, J. Hagstedt, C. Mitchell, Sister Mary Dominica, S. Beahan, E. Chamberlain; 3rd row, R. Millett, M. Grigsby, A. Hicks, P. George, R. Plank, L. Rand, B. A. Focht, S. Carson.



Class Officers: Candy MacDougall, Vice President; Sharon Corey, President; Dawn Hughes, Secretary; Mary Flanagan, Treasurer.



Class Officers: John Parlee, Secretary; Robert Smith, President; Paul McGuire, Vice President.



IA: Front Row, R. Driscoll, W. Evans, M. McCarthy, P. Baker, J. Lupo, D. Witham, E. Marsh, R. Faulkingham, M. Dubay, D. O'Connell; 2nd row, E. Charette, R. Hansen, E. Hopkins, M. Burke, J. McKee, P. McGuire, P. Finnegan, F. Clancey, Brother Linus, J. Beard, M. Skillin, J. McCann, M. Barton, W. McKenna, P. Enman, J. Lacadie, T. Parent, M. McInnis; 3rd row, M. Johnson, J. Parlee, K. Vickers, R. Taylor, W. Maxwell, P. Eggert, J. Crawford, R. Soucy, R. Smith, J. Robinson, S. Zauche, J. Herbert, J. Hodgkins.



IC: Front Row, G. Shorette, C. Thibadeau, C. Beaulieu, V. Bouchard, C. Bard, D. Price, D. Morales, A. Roy, R. King, N. Violette; 2nd row, F. Sturgeon, L. Jameson, E. Rice, D. Stuntz, T. King, T. Duplisses, T. Dougherty, Brother Matthias, F. Saba, D. Shorette, S. Buckles, A. McGrath, R. LaFountain, J. Willette, J. Robichard, H. Tesseo; 3rd row, A. Landry, D. Parke, D. Plummer, T. Muldoon, T. Bourbon, S. Cust, P. Brooks, M. LeBlanc, W. Kellam, E. Cormier, R. O'Connell, G. Lucas, C. Brown.



Class Officers: W. Kellam, Treasurer; S. Buckles, President; M. LeBlanc, Vice-President



... and this is the government's contribution to Bapst!



O. K. That's enough!



Class Officers: Marie Dragon, Secretary; Audrey Finnegan, Vice President; Rella Pinette, President; Sandra George, Treasurer.



2A: Front row, M. Lupo, J. O'Connell, D. LeClair, M. E. Ford, Y. Edmonds, P. Frederick, J. MacDonald, J. Estey, M. McInnis, A. Finnegan; 2nd row, D. Pooler, R. Pinette, N. McPhee, J. Skillin, M. A. Day, Sister Mary Jeanne, A. Dandaneau, M. Cassily, C. Alleman, K. Knowles, M. Soucy, D. Dixon; 3rd row, M. L. Rist, P. Winchester, P. Latno, J. Smith, M. McClay, P. Cochrane, P. Flanagan, S. Johnson, J. Murphy, A. Dwyer, J. Lagrange.



2C: Front row, P. Washburn, B. Brown, A. LaFlamme, L. Pettigrew, C. Robichaud, J. Arsenault, M. Smith, A. Nicholas, S. Apostoloff, P. Duay; 2nd row, J. Lucas, R. Hughes, K. Angley, N. Thibault, Sister Christine Marie, J. Stover, M. Violette, M. Dougherty, D. Cormier; 3rd row, M. Focht, M. Dragon, M. Burns, S. George, C. Carparelli, C. Michaud, J. Bishop, L. Hamilton, D. Dennis, A. Henry, R. O'Connor.



Taste taste.



"I don't believe it."



Class Officers: Front row, Hubert Black, Treasurer; Donald Macdonald, Secretary; 2nd row, Michael Lacadie, President; Thomas Shanley, Vice-President.



2A: Front row: P. Trainor, P. Lamoureux, M. Trainor, M. Shannon, R. Smith, M. Enman, R. Pelletier, W. Schoolcraft, T. Largay; 2nd row, R. Zuch, R. Forman, M. Lacadie, C. Dunn, T. Shanley, Brother Simeon C.F.X., J. McCloskey, L. Savoy, T. Dudek, J. Baker, D. Hart, R. Tozier; 3rd row, F. Pooler, M. Kelly, D. Macdonald, Laliberte, R. Chisholm, A. Martel, J. Hoffer, H. Black, J. Coffin, R. Hansen, R. Frazier.



2C: Front row, M. Scruggs, R. Davies, H. Smith, J. O'Connell, A. Parent, T. Comer, E. O'Donnell, A. Nadeau; 2nd row, T. Jameson, A. Robichaud, R. Thibodeau, R. Simpson, Brother Cronan, C.F.X., R. Constantine, J. McDonald, R. Shaughnessy; 3rd row, G. Clapper, H. Keenan, W. McCarthy, T. McLaughlin, M. Baldacci, L. Rogers, D. Crockett, R. Smith.



Class Officers: Michael Baldacci, Treasurer; Timothy Comer, President; Richard Smith, Vice-President.



Smile! Last period.



I wonder what we're having for lunch today.



Class Officers: Barbara Corey, President; Carol Littlefield, Vice President; Mary Fitzpatrick, Secretary; Sandra Zauche, Treasurer.



3A: Front row, S. Glidden, B. Corey, K. Mullaney, S. Jones, M. Rice, M. Cormier, B. Blinn, M. Smith, L. Perry, R. Beaudin; 2nd row, M. Driscoll, J. Rittal, R. Harrison, R. Rowe, M. Richard, Sister Mary Raymond, K. Reynolds, P. Kenney, J. Donovan, S. Robinson, S. Munce; 3rd row, P. Kinney, A. Sheehan, S. Cassily, C. Verow, L. Whittemore, S. MacDougall, M. Perry, W. Toole, M. Fitzpatrick, J. Savage, C. Spellman.



3C: Front row, F. Rudnicki, A. Cossette, M. DeRoche, J. Rennebu, R. Thibodeau, P. Montgomery, P. Files, E. Millett; 2nd row, J. Viricel, M. Orris, S. Fournier, P. Cox, Sister Mary Louis, D. King, C. Littlefield, M. E. McNamara, B. Verow; 3rd row; S. Zauche, V. Hart, N. Littlefield, V. Berry, M. McNally, M. Robinson, M. Amaral.



"I'm going to pieces over you."



And they think we're studying.



Class Officers: E. Farwell, Secretary; J. Regan, President; R. Palmieri, Vice-President; D. O'Connell, Treasurer.



3A: Front row: C. Landry, D. Hayden, J. Rennebu, M. Murray, M. McKenna, F. Finnegin, R. Palmieri, R. Collins; 2nd row, J. Dougherty, J. Lavin, R. Pettit, J. Soucy, R. Field, Brother Benilde, W. Willette, J. Sekera, R. Morales, T. Duffy; 3rd row, J. McPhearson, J. Houlihan, R. Barrett, N. Carparelli, M. McNally, J. McGrath, E. Beausang, K. Hicks, E. Farwell, G. Carroll, J. Regan, and D. O'Connell.



3C: Front row, J. McGrath, R. King, G. Umel, P. McManua, M. Brochu, J. Nadeau, J. Blake, R. Thibodeau, G. Weber; 2nd row, J. Leeman, R. Martin, C. Gillis, Brother Mel, C.F.X., P. Johnson, R. Cota, McMcCann; 3rd row, D. Ruby, P. Dougherty, D. Soucy, J. Stetson, D. Brooks, D. McLaughlin, A. Campbell, R. McPherson, J. Millett.



Which way to the elevator?



Class Officers: Kneeling, James Blake, President; Back Row, Gilbert Weber, Secretary and Treasurer; Ronald Thibodeau, Vice-President.

Compliments
of
THE RIGHT REVEREND
Edward F. Ward

Compliments
of
THE REVEREND
James H. Keegan

Compliments of

**CROWE
FUNERAL HOME**

Congratulations....

AND BEST WISHES

FOR A SUCCESSFUL FUTURE

A sound banking connection made now
will prove valuable throughout your career.
Come in soon and get acquainted with us.
We'll gladly show you how Merrill Trust's services
can help you make personal and business progress.
Drop in to the Merrill Trust's office
nearest you...we'll be glad to see you.

- ▶ Fourteen Offices "Serving Eastern Maine"
- ▶ Convenient Customer Parking "In the Heart of Bangor"

THE MERRILL TRUST COMPANY

THE BANGOR BANK WHERE YOU CAN PARK WITH EASE

"Serving Eastern Maine"

MEMBER FEDERAL DEPOSIT INSURANCE CORPORATION • MEMBER FEDERAL RESERVE SYSTEM

BANGOR • BELFAST • BUCKSPORT • CALAIS • DEXTER
DOVER-FOXCROFT • EASTPORT • JONESPORT • MACHIAS • MILO
OLD TOWN • ORONO • SEARSPORT • WOODLAND

Compliments of

The Bangor Drug Company

Wholesale Druggist

110 BROAD STREET

BANGOR, MAINE

Bangor's Oldest Bank
MERCHANTS NATIONAL BANK OF BANGOR

MORE THAN A CENTURY OF SERVICE

Founded in 1850, Merchants National Bank has provided sound banking service for the people of Bangor, and surrounding towns for well over a century.

While Merchants is Bangor's Oldest Bank it is one of Maine's most modern banking institutions offering complete commercial and family banking services in three convenient locations.

LOOK TO MERCHANTS
FOR ALL YOUR BANKING NEEDS

- CHECKING ACCOUNTS
- CHRISTMAS CLUBS
- SAFE DEPOSIT BOXES
- TRAVELERS CHECKS
- TIME SALES
- SAVINGS BONDS
- SAVINGS ACCOUNTS
- VACATION CLUBS
- TRUST SERVICES
- MONEY ORDERS
- CASHIERS CHECKS
- NIGHT DEPOSITORY

Remember . . . You are always welcome at
MERCHANTS NATIONAL BANK

MERCHANTS
National Bank
of BANGOR

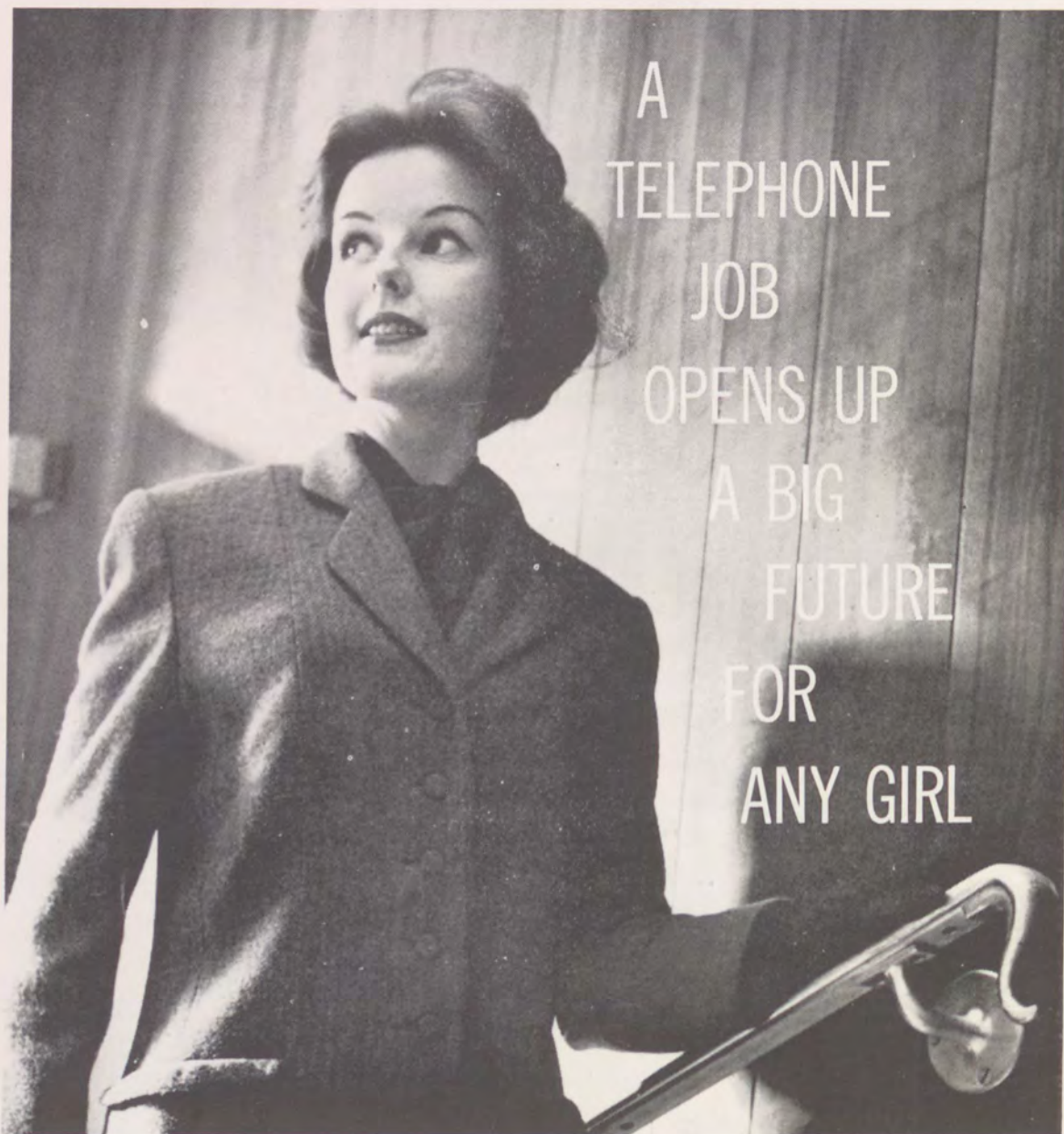
3 Convenient Locations

25 BROAD STREET
BANGOR, MAINE

UNION at 14th STREET
BANGOR, MAINE

77 NORTH MAIN STREET
BREWER, MAINE

Member Federal Reserve System and Federal Deposit Insurance Corporation



A
TELEPHONE
JOB
OPENS UP
A BIG
FUTURE
FOR
ANY GIRL

When you graduate it's wonderful to have a telephone job waiting for you. You'll love the friendly new people you meet. And you'll like the excellent salary, the regular increases, the opportunities for advancement and the many additional benefits that make working for the Telephone Company so attractive to so many young people.

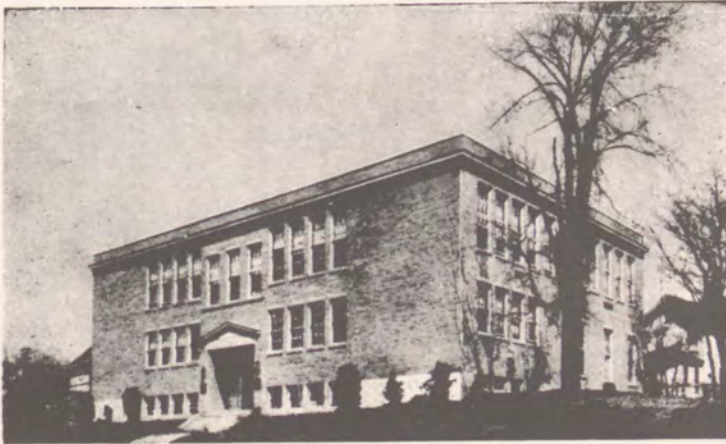
Telephone jobs are important ones. We have our own training program which you can enter without any previous job experience.

Why not come and see our employment interviewer soon . . . before you graduate. Ask the Guidance Counselor at your school to tell you when and where to apply.

NEW ENGLAND



TELEPHONE



HUSSON COLLEGE

Collegiate Programs for Careers in Business
Accredited

as a Specialized College of Business by
The Accrediting Commission For Business Schools

Diploma Courses (one and two years)

Junior Secretarial, Executive Secretarial, Legal Secretarial,
Medical Secretarial, Stenographic, Accounting and
Auditing, Business Administration, General Clerical.

Degree Courses: (four years)

Bachelor of Science in Accounting
Bachelor of Science in Business Administration
Bachelor of Secretarial Science
Bachelor of Science in Business Education

A request for our catalog will be promptly and courteously
answered. We employ no solicitors.



C. H. HUSSON, *President*

157 PARK STREET

BANGOR, MAINE

"Education is cheap. It is ignorance and incompetence that cost dearly."--Wilhoit

EASTERN TRUST AND BANKING COMPANY

BANGOR, MAINE

OFFICES

Old Town, Maine

Machias, Maine

DRIVE-IN OFFICES

Corner Fern and State Streets

and

Corner Hammond and Allen Streets

Offering Complete Banking Service

CHECKING ACCOUNTS

SAVINGS DEPARTMENT

SAFE DEPOSIT DEPARTMENT

PERSONAL MONEY ORDERS

SPECIAL CHECKING ACCOUNTS

TRAVELERS CHECKS

TRUST DEPARTMENT

BANK BY MAIL SERVICE

INSTALLMENT

73-75 Central Street

LOAN

AGENCY

Bangor, Maine

JOHN BAPST

PARENTS' CLUB

CONGRATULATIONS

While this occasion marks the end of one chapter in your life, we hope that it will also signal the beginning of a most successful and happy career throughout the interesting years that lie ahead.

Whatever your plans may be, remember the importance of thrift in planning for the future. Start a savings account now designed to fit your future needs.

BANGOR SAVINGS BANK

Serving Maine Families Since 1852

3 State Street

Bangor, Maine

DRINK

GRANT'S

MILK

For Home Delivery Call GRANT'S DAIRY — 2-4601

KINNEY DUPLICATOR COMPANY

159 State Street

Bangor, Maine

A B DICK PRODUCTS
SMITH-CORONA TYPEWRITER
KODAK VERIFAX
STEEL OFFICE FURNITURE
MAINE MADE PAPER

Tel. 2-8441

STERNS LUMBER COMPANY, INC.

LUMBER — BUILDING MATERIALS

EAST HAMPDEN

MAINE

FRANCIS L. CASEY

GENERAL INSURANCE

53 North Main Street

Brewer, Maine

Dial 2-8358

Connor Coal and Wood Co.

COAL — COKE — FUEL OIL

Yard

103 South Main Street

Brewer, Maine

Office

15 Columbia Street

Bangor, Maine

Phone 2-0703



From the press of

L. H. THOMPSON, Inc.

PRINTERS • LITHOGRAPHERS

BREWER / MAINE

DIAL 2-0968 — 2-9042

New Tires & Tubes

Used Tires & Tubes

JOE FLEMING

wants to see YOU about

EXPERT TIRE RETREADING

JOSEPH H. FLEMING CO.

55-65 OAK STREET

Dial 9446

Vulcanizing

Expe

Expert Tire Service

The *Crusader* Covers

and Binding

furnished by

**DILLINGHAM'S
Bookbinders**

29 Franklin Street

Bangor

Cerlox Plastic Bindings

OUR THANKS FOR
YOUR COOPERATION
AND PATRONAGE.



Official Class Photographers



DISTINCTIVE PORTRAITS

By

STEVENS STUDIOS

BANGOR, MAINE



FOR YOUR FAMILY AND HOME

GO TO GRANTS

**Where Satisfaction is Guaranteed...
Every Day**

**SHOP MODERN...at the store designed for FASTER and EASIER
shopping...for your entire family and home.**

W.T. GRANT CO.

6-16 CENTRAL STREET

BE RIGHT

BUY AT WIGHT'S

WIGHT'S EXTENDS CONGRATULATIONS

For Your Fine Yearbook

For Your Fine Athletic Teams

We are proud to be of service to both

(A) WIGHT'S EXPERT SERVICES FEATURE

Rod Repairs — Tennis Racket Restringing

Gunsmithing — Gun Bluing — Bicycle Repairs

Trophy Engraving

(B) WIGHT'S SPECIAL SERVICES FEATURE

Lowest Team and Club Prices

24-Hour Felt Letter Service

(C) HEADQUARTERS

Spalding — Wilson — Rawlings — Powers

Johnson Outboards — Schwinn Bikes

WIGHT'S SPORTING GOODS

Wholesale - Retail

54 State Street, Bangor, Maine

Travel Tips

FOR SCHOOL TRIPS



The safest way to travel

on your school trips is by charter bus. Expert drivers, familiar with the highways assure your safety as you ride in luxurious, carefree comfort.

Charter Bus trips

are easy to arrange. We can help you with your plans — even make advance reservations for you, if you wish. We can take you anywhere you want to go — in U. S. A., Canada or Mexico.

For information and rates, see your nearest Bangor and Aroostook bus agent or write direct to:

A. J. TRAVIS
MANAGER, HIGHWAY DIVISION
BANGOR and AROOSTOOK RAILROAD
BANGOR, MAINE



HIGHWAY DIVISION

MAURICE J. FINESON

374 Center St.

Bangor, Me.

Class Rings, Class Pins and Awards

Official Jeweler to John Bapst
High School since 1933

Representing Loren Murchison Co.

Maine's Largest

Discount Dept. Store

THE MART

Self Service

Discount Dept. Store

Harlow St., Bangor

Compliments of
The Catholic Personnel of
Dow Air Force Base

Congratulations to the Class of 1961

THE FACULTY

JOHN BAPST HIGH SCHOOL

CANTEEN SERVICE COMPANY

38 School Street

Bangor

STANLEY J. LEEN CO.

Leen's Electric Motor Service

Brewer End of New Bridge

Mr. and Mrs. Richard Adams
Mrs. Joseph Albert
Mr. and Mrs. Peter Alex
Mr. and Mrs. Isadore R. Alpert
Mr. and Mrs. Keith Anderson
Mrs. Sylvia Anderson
Mr. and Mrs. Victor Anello
Mr. and Mrs. Edward Angley
Mr. Donald Annis
Mrs. Margaret Annis
Betty L. Arnott
Mr. and Mrs. Donald E. Aurion
Avenue Market
Mr. and Mrs. Robert Baldacci
Mr. and Mrs. Vasco Baldacci
Mrs. Alice Baker
John D. Baker, Jr.
Mr. and Mrs. Carl Baumann
Lt. Col. W. J. Beahan
Mr. James Beale
Homer Beaulieu
Paul Beaulieu
Thomas Beaulieu
Mrs. P. J. Bell
Mr. and Mrs. Robert A. Bell
Sarah Bell
Sheila Bell
Mr. Patrick J. Bell
George J. Bernier
Rella M. Bernier
Mr. and Mrs. Thomas Birmingham
Miss Ellen Bishop
John Bishop
Mr. and Mrs. Philip Bishop
Mr. Edward T. Blackman, Jr.
Alice I. Blakely
Mr. and Mrs. Asa Blanchard
Margaret Blanchard
Mr. and Mrs. William Bond
Rev. Gerard Bouchard
Mr. and Mrs. Alphonse Bourgoyne

Miss Barbara Boynton
Mr. Fred Chandler
Mr. and Mrs. Guy Boynton
Mr. and Mrs. Grover Bradbury
Mr. and Mrs. Charles Brann
Mrs. Albertine Breen
Mr. and Mrs. J. Robert Brennan
Mrs. Mary Brennan
Regenald Brocher
Mr. and Mrs. E. E. Brown Jr.
Mr. E. E. Brown Sr.
Miss Francis Brown
Mrs. George Brown
Mr. and Mrs. John Bryce
Mr. and Mrs. Malcome Buchanan
Mr. and Mrs. John Buckley
Mrs. Priscilla Bunker
Louise Burgess
Miss Dorothy Burke
Mr. and Mrs. Peter Burke
Mr. Harold Butler
Mr. and Mrs. Ken Butler
Fred Cameron
Mr. John Cameron
Walter F. Cammack
Rev. William Campbell
Father William Campbell
Mrs. Mary Ann Capute
Mr. and Mrs. R. D. Carl
Anna Carparelli
Carmella Carparelli
Nicholas Carparelli
Mrs. Rita Carparelli
Mrs. Newell Carpenter
Mr. and Mrs. Charles T. Carson
Mr. and Mrs. John A. Carusoe
Mr. and Mrs. Francis Casey
Mr. and Mrs. William Casey
Mr. and Mrs. Charles F. Cassily
Mrs. Lester Cilley
Mr. and Mrs. Lawrence Chamberlain

Miss Margaret Chamberlain
Mr. Raymond Chamberlain
Christ the King Gift Shop
Mr. and Mrs. Francis Clancey
Jim Clark
Mr. and Mrs. James M. Clark
Mrs. Maynard Clark
Mr. and Mrs. Clement
Mr. and Mrs. F. J. Clement
Col. and Mrs. Henry Clerici
Mr. and Mrs. Donald F. Clish
Miss Selma Cohen
Mary G. Collins
Miss Barbara Condon
Miss Carol Coney
Mr. and Mrs. John Coney
Edward H. Conley
Mr. and Mrs. Edward J. Conley
Mr. John Connor, Sr.
Mr. and Mrs. James Connor
Mr. and Mrs. Earl R. Constantine
Mr. and Mrs. Dilbert Cook
Mrs. Ethel G. Copp
Mr. and Mrs. Harold Corey
J. B. Cormier
Maude E. Cota
Mr. and Mrs. Dennis Cote
Mr. and Mrs. Francis J. Coughlin
Miss Margaret E. Courtney
Mr. and Mrs. Patrick Couturier
Mr. and Mrs. S. J. Cowin
Mrs. Thelma Cowin
Mr. and Mrs. John H. Cronin
Mrs. Frances Crowley
Mrs. Thomas Crosby
Mrs. Thomas J. Crosby
Mrs. Earl Curran
Dr. and Mrs. Edward L. Curran
Mr. and Mrs. Paul Currier
Mr. and Mrs. Gilbert J. Cyr
Mrs. Bernadette Daigle

Mrs. Royden Daigle
Mr. and Mrs. J. E. Daley
Mr. and Mrs. Owen Darling
Mr. and Mrs. Thomas Davis
David R. Davies
Vera Davies
Mr. and Mrs. Davis
Miss Ellen Day
Mrs. Joseph Day
Mr. and Mrs. Joseph Day
Mr. and Mrs. R. W. Day
Mr. and Mrs. Donald W. Day
Miss Teresa Day
Earl Joseph Dean
Mr. and Mrs. James Dee
Mr. and Mrs. Jack DeGrase
Mr. Albert Desjardens
Mr. and Mrs. Samuel Desposito
Mr. and Mrs. Nat Diamond
Mrs. Walter Doane
Mr. and Mrs. Albert Donovan
Mr. and Mrs. George Doll
John F. Doran, Jr.
Mr. and Mrs. John F. Doran, Sr.
Mr. and Mrs. Joseph F. Doran
Miss Annie Dougherty
Miss Frances Dougherty
Mrs. Frank Dougherty
Miss Katherine Dougherty
Barbara Ellen Dow
Mrs. Ellery F. Dow
Julie Ann Dow
Mr. and Mrs. Norbert Dowd
Mr. and Mrs. Ralph H. Downes
Diane C. Drew
Mr. and Mrs. Judson N. Drew, Jr.
Mr. and Mrs. J. A. Driscoll
Mr. and Mrs. Robert Duddy
Mrs. Madolyn Duffy
Ray Dumas
H. R. Epstein
Miss Jeanette Estey

Mr. and Mrs. Irving Estey
 A Friend
 Miss Lena Fallon
 Mr. and Mrs. Edward F. Farwell
 Mr. and Mrs. George P. Fenno
 Mr. and Mrs. Lawrence Fernald
 Mr. Richard E. Fernald
 Mrs. Francis A. Finnegan
 Mr. Francis A. Finnegan
 Mr. and Mrs. John J. Flaherty, Jr.
 Mr. and Mrs. Joseph Flanagan, Sr.
 Lillian M. Flanigan
 Mr. John E. Flanigan
 Margaret Flanigan
 Mary C. Flanigan
 Miss Mary I. Flanigan
 Mr. and Mrs. T. E. Flanigan
 Thomas J. Flanigan
 Mrs. Thomas Fleming
 Mr. and Mrs. William R. Focht
 Mr. and Mrs. William Ford
 Isabel Foster
 Mr. Clarence Fowler
 Mrs. Melvin Fowler
 Mr. and Mrs. J. Clifford Francis
 Mr. and Mrs. T. Francis
 Capt. and Mrs. H. R. Frederick
 Mrs. Arthur Freeman
 Edward J. Frey
 Mr. and Mrs. Francis Fitzpatrick
 Mr. and Mrs. Gabysh
 Bill Gagnon
 Mr. and Mrs. William Gaherty
 Miss Lynda Gaillard
 Michele Gaillard
 Mr. Harold Gallagher
 Mrs. Helonior Gallagher
 Mr. and Mrs. Gerald Gagne
 Mrs. Joseph Gallant
 Mr. and Mrs. Aljhouse Garceau
 Mr. and Mrs. Julius H. Gass

Mr. and Mrs. Max Gass
 Mr. and Mrs. M. B. Gass
 Tom Gatto
 Mr. Maroun George
 Miss Mary Ann George
 Mr. and Mrs. Raymond George
 Mr. and Mrs. Raymond George
 Miss Sandra George
 Mr. and Mrs. Walter Gerrish
 Getchell's Barber Shop
 Mrs. Melina Giasson
 Mr. and Mrs. Edward C. Gibbons
 Mrs. Frank Gibbons
 Marvin Gierhan
 Carol Ann Gillis
 Charlene Gillis
 Mr. and Mrs. Charles Gillis
 Mr. and Mrs. John Gillis
 Mr. and Mrs. Ronal Glass
 Mr. and Mrs. Edmund Glidden
 Mr. and Mrs. M. Goibon
 Mr. and Mrs. Daniel F. Golden
 Mr. and Mrs. Daniel F. Golden
 Mr. and Mrs. James Golden
 Mr. and Mrs. Milton Goldsmith
 William R. Good
 Mr. and Mrs. Maurice Godall
 Mr. and Mrs. Emile Goodin
 Rev. Peter Gorham
 Miss Evelyn Goulette
 J. Thomas Graves
 Miss Elizabeth Greer
 Mr. James Greer
 Mrs. James Greer
 Mr. John W. Greer
 Mr. and Mrs. Lawrence Griffin
 Mr. and Mrs. Sam Grunko
 Mr. Anthony Guay
 Mrs. Anthony Guay
 Mr. and Mrs. Joseph Guerin
 Mr. and Mrs. George L. Guidmore

Mr. and Mrs. H. C. Haesecke
 Mr. and Mrs. H. L. Haesecke
 Mark Haesecke
 Mr. and Mrs. Reginold Hagerman
 M-Sgt. and Mrs. Kenneth W. Hagstedt
 Cathy Hale
 Mrs. Doris Hallowell
 Dennis Robert Hamel
 Mrs. E. H. Hamilton
 Mr. and Mrs. Earl W. Hansen
 Mr. and Mrs. William E. Hansen
 Evelyn Harey
 Mr. Charles J. Harrington
 Hazelle E. Harrington
 Mr. E. A. Hart Jr.
 Mrs. E. A. Hart Jr.
 Mr. Lawrence Hart
 Norma J. Hart
 Mr. and Mrs. Harold Hatch
 Mr. and Mrs. Harry Hayden
 Mrs. Rosemary Hayes
 Mr. and Mrs. William Healy
 Alice Heher
 Mrs. Geraldine Heidtman
 Mrs. William E. Henderson
 Mr. Raymond E. Henry Sr.
 Mr. and Mrs. Raymond E. Henry Sr.
 Mr. and Mrs. John Hickman, Jr.
 Mrs. H. O. Hicks
 Helen Hickson
 Miss Riat Higgins
 Merle T. Hilborn
 Doris Homsted
 Miss Catherine Houlihan
 Dr. and Mrs. John S. Houlihan
 Mr. William Houlihan
 Mrs. Catherine Hughes
 Mr. and Mrs. Edward Hughes
 Mr. and Mrs. James Hughes
 Mrs. William T. Hughes, Jr.
 Mr. William T. Hughes, Jr.

Mrs. William T. Hughes, Sr.
 Mr. William T. Hughes, Sr.
 Talcott B. Hull
 Rev. Donald W. Jacques
 Mrs. Edward S. James
 Mr. Jerry Jameson
 Vaster Jellison
 Mr. John R. Johnson
 Mr. and Mrs. Kenneth A. Johnson
 Mr. and Mrs. Louis F. Johnson
 Miss Marilyn A. Johnson
 Gerald Jordon
 Rev. Lawrence R. Jovin
 Mr. and Mrs. George Karam
 Mr. and Mrs. Bradley Keeler
 Mr. and Mrs. Cornelius Kelleher
 Mr. and Mrs. James H. Kelleher
 Mr. and Mrs. John L. Kelleher
 Mr. and Mrs. J. Paul Kelleher
 Miss Sandra Kelleher
 Mrs. Irving N. Kelley
 Mr. and Mrs. Thomas W. Kelley
 Brian Kelly
 Mr. James Kelly
 Miss Margaret Kelly
 Sarah Ann Kelly
 William E. Kelly
 Mr. and Mrs. Keely
 Mr. and Mrs. Crawford Kenny
 Mr. and Mrs. Crawford Kenney
 Mr. and Mrs. Francis Kenney
 Mr. and Mrs. John Kenney
 Mr. and Mrs. Carlton L. Shorey
 and Kevin
 Mr. and Mrs. Alfred King
 Mr. and Mrs. Joseph King
 Miss Sherrill King
 Mr. and Mrs. Valmore A. King
 Mr. and Mrs. John Kobrits
 Mr. Lewis T. Kotredes
 Mr. and Mrs. Frederick W. Knaide
 Mr. and Mrs. Leo Kupserel
 Mr. and Mrs. Gerald Labanken

Mr. and Mrs. Joseph A. LaFlamme
 Dugene W. Lane
 Mr. and Mrs. Edmund Langlais
 Mr. and Mrs. Addis Lavoie
 Mr. and Mrs. Alban Lavoie
 Mr. and Mrs. Euclid Lavoie
 Mr. and Mrs. George Lavoie
 Miss Irene Lavoie
 Mr. and Mrs. Lucien Lavoie
 Mr. and Mrs. Nizier Lavoie
 Mr. and Mrs. Rudolph Lavoie
 Mr. and Mrs. Vinal Lavoie
 Mrs. Norma T. Lawson
 Mr. and Mrs. Carl Leathers
 Mrs. Carl Leathers
 Mr. and Mrs. Joseph LeBlanc
 Mrs. Robert LeBlanc
 Mr. and Mrs. Rudolph LeBlanc
 Mr. William LeClair
 Mr. and Mrs. Francis Leen
 Mrs. Leo Leonard
 Mr. and Mrs. Paul Leveille
 Mr. and Mrs. Carl Libby
 Mr. and Mrs. Robert Libby
 Ruth I. Loftus
 Mr. and Mrs. William Lovejoy
 Mr. and Mrs. William S. Lucey
 and Family
 Mrs. C. J. Lupo
 Mr. and Mrs. T. A. Lynch, Jr.
 Adeline Lyons
 Dr. and Mrs. Donald F. MacDonald
 Mr. and Mrs. Norman MacRitchie
 Mr. and Mrs. Hollis Madden
 Mr. John H. Magee
 Mrs. J. H. Magee
 Mr. and Mrs. Thomas E. Magee
 Edward P. Mahaney
 Mary Ann Mahaney
 Michael Mahaney
 Mr. John S. Maher

Mrs. Marilyn Marcho
 Marlene's Uniform Shop
 Kerry Scott Marquis
 Miss Joan Martin
 Miss Joan P. Martin
 Mr. and Mrs. Paul E. Martin
 Mr. and Mrs. Paul Martin, Jr.
 Mr. and Mrs. Paul Martin, Sr.
 Mr. and Mrs. Frederick Mason
 Mr. and Mrs. Paul L. Matte
 Mrs. R. McAuvic
 Mrs. Margaret Mauzy
 Hilda Mae McBreairey
 Mr. and Mrs. James R. McCarthy
 Mr. and Mrs. Danile McClay
 Miss Joan McClay
 James C. McDonough
 Mr. and Mrs. John McDonnell
 Miss Joanne A. McDonough
 Mr. and Mrs. Edward McDougall
 Mr. and Mrs. George McGee
 Mr. and Mrs. McGlaflin
 Mr. and Mrs. John E. McGuff
 Mrs. Martin F. McGuff
 Mr. and Mrs. John T. McGuire
 Dr. and Mrs. John McHugh
 Mr. and Mrs. George McIninch
 Miss Emma McInnis
 Mr. and Mrs. Leo McInnis
 Mr. Winsiford McIsaac
 Joy McKee
 Mrs. Joseph McKenna
 Richard W. McKenna
 Richard W. McKenna
 Mr. Edwin McLeod
 Mr. and Mrs. Jeremiah McLeod
 Mr. and Mrs. Edward McManus
 Mr. and Mrs. Frank McManus
 Mr. and Mrs. James McNamara
 Mrs. Paul L. McPhee
 Mrs. Patricia McQuillian

Mr. and Mrs. William P. Meade
 Mr. and Mrs. Clarence Melanson
 Miss Darleen Merrill
 Mr. and Mrs. Richard Merrill
 Mr. and Mrs. Rufus Merrill
 Charles Merssner
 Mr. and Mrs. Dennis Michaud
 Mr. and Mrs. Charles E. Milan
 Mr. Ronald Miles
 Mrs. H. A. Millett
 Eddie Mishou
 Mrs. Ruth Mishou
 Mr. and Mrs. Gene Mitchell
 Mrs. Helen J. Mitchell
 Mr. and Mrs. Francis Mooney
 Mr. and Mrs. James Mooney
 Mr. and Mrs. James Mooney
 Mr. and Mrs. John J. Mooney
 Mr. and Mrs. Joseph Mooney
 Miss Julia E. Mooney
 Miss Teresa R. Mooney
 Capt. and Mrs. G. W. Moniere
 Mr. and Mrs. John Moro
 Morrill Brothers
 Mrs. Mosher
 Henry Mullins
 Dr. and Mrs. Richard Munce
 Miss Helen H. Murphy
 Leo C. Murphy
 Mr. and Mrs. Joseph C. Murphy
 Miss Mary M. Murphy
 Mrs. Martha Murphy
 Raymond Murphy
 Miss Rose Murphy
 Edith L. Murtha
 Miss Anna C. Murray
 Mr. and Mrs. Edward P. Murray, Jr.
 Justice Edward P. Murray
 Mr. and Mrs. Sydney Mutty
 Mr. and Mrs. R. Reginald Nadeau
 Mrs. Gertrude Nelligan
 Miss Helena Nelligan

Mr. John Nelligan
 Mr. and Mrs. John J. Nelligan
 Mr. and Mrs. Paul Nelligan
 Mr. and Mrs. Robert Nelligan
 Mr. and Mrs. Edward Niedorokski
 Miss Cristine O'Brien
 Mr. and Mrs. James O'Brien
 Miss Polly O'Brien
 Mr. and Mrs. Richard O'Brien
 Mr. and Mrs. J. T. O'Connell
 Mr. and Mrs. Patrick O'Connell
 Mr. Frank O'Conner
 Mr. and Mrs. Donald T. O'Connor
 Mr. and Mrs. James F. O'Connor
 Rev. Richard O'Donnell
 Mr. and Mrs. Cornelius O'Leary
 Frank O'Toole
 Miss Mary Ouellette
 Our Lady of Fatima Sodality
 Mr. and Mrs. Albert Parady
 Miss Mary Lou Parady
 Mr. and Mrs. Harris Parent
 Mrs. Ida Paschal
 Mr. and Mrs. Clifford A. Patton
 Mr. and Mrs. Ronald Pellerin
 Mrs. Dana Pelletier
 Mr. and Mrs. Phillip Pelletier
 Mr. and Mrs. Donald Penny
 Mr. and Mrs. Francis O. Perry
 Miss Jacquelyn Perry
 Mr. and Mrs. John R. Perry
 Mr. and Mrs. Robert A. Perry
 Mr. and Mrs. Albert Petranick
 Robert Pettit
 Mr. and Mrs. Robert D. Pettit
 Edith Pinette
 Mr. and Mrs. Edward Pinette
 Mr. and Mrs. Ronald Pinette
 Mr. and Mrs. Gerald Plourde
 Mr. and Mrs. Ray Poole
 Mr. and Mrs. Clement E. Pooler
 Mr. and Mrs. George E. Pooler

Lloyd P. Pooler
 Paul Poueer
 J. E. Prout
 Mr. and Mrs. J. Edward Prout
 The Pub
 The Pub
 The Pub
 The Pub
 The Pub
 Rouifand L. Pune
 Mr. and Mrs. A. Pusia
 Mr. and Mrs. Robert Quinn
 Mr. and Mrs. A. Raphaelson
 Mr. and Mrs. Parker B. Rand
 Arthur H. Redman
 John Reed
 Mr. and Mrs. Theodore Reed
 Reynold's Grocery
 Mr. and Mrs. Philip Reynolds
 Mr. John Rice
 Mr. Kelly Rice
 Mr. and Mrs. Richard L. Rice
 Mr. Robert Rice
 Mr. William M. Rice
 Mr. and Mrs. William Rice
 Mr. and Mrs. Wyman Rice
 Mr. and Mrs. John E. Richard
 Mrs. Florence Richardson
 Alton Rideout
 Mrs. Alton Rideout
 Connie Rideout
 Cookie Rideout
 Patricia Rideout
 Mr. Francis Rist
 Mr. James Rist
 Miss Mary Lou Rist
 Mrs. Richard Rist
 Mr. Richard Rist, Jr.
 Miss Robina Rist
 Miss Rosemary Rist
 Mr. William Rist

Mr. and Mrs. Harold Rittal
 Mrs. James Rittal
 Richard Rivers
 Mr. and Mrs. Harold Robinson
 Mrs. James A. Robinson, Jr.
 PFC William Robinson II
 Mr. and Mrs. John Rogan
 Mrs. Dorothy Rogers
 Mr. and Mrs. Rohrbach
 Mr. and Mrs. Charles Roldue
 Mr. and Mrs. H. F. Rooney
 Mr. and Mrs. A. Rosenberg
 Cmdr. and Mrs. A. P. Ross
 Mrs. Mary E. Rowe
 Miss Roberta Rowe
 Mr. and Mrs. Morris Rubin
 Mr. and Mrs. Frank Ruby
 Mr. and Mrs. James Russell
 Mr. and Mrs. Paul Russell
 Mrs. Charles Ryan
 M-Sgt. and Mrs. Sager
 Mr. and Mrs. Thomas St. Louis
 Mrs. Madeline G. St. Peter
 Mr. Robert H. St. Peter
 Mr. and Mrs. James J. Samway
 Henry Terrence Samway
 Miss Anna Samways
 Mrs. H. E. Savage
 Mr. Daniel Sargent
 Mrs. Myrtle Schirm
 Mr. Kenneth Scripture
 Henry H. Segal
 Mr. and Mrs. Steve Seguino
 Mrs. Clarence Shannon
 Mr. and Mrs. Frederick Shannon
 Mr. and Mrs. Benjamin L. Shapers
 Ann M. Sheehan
 Mr. and Mrs. Charles E. Sheehan
 Mabel Sheehan
 Mr. and Mrs. Edward Sherry
 Mrs. Myron Sherwood

Mr. and Mrs. Harold Shorette
 Mr. and Mrs. Lawrence Shorette
 Mr. and Mrs. Howard Silver
 Mr. and Mrs. W. L. Simon
 Mr. and Mrs. Lee F. Skillin
 Mr. and Mrs. Mitchell Sleeper
 Mr. and Mrs. Morris Slep
 Roger Sloan
 Mr. and Mrs. Albert Smaha
 Mr. Ethel Snowman
 Mr. and Mrs. Pedro Solis
 Mrs. Ethel Snowman
 Mr. and Mrs. Pedro Solis
 Mrs. Robert L. Soucy
 Mr. Robert L. Soucy
 Mr. and Mrs. Daniel Spellman
 Paul Spellman
 Sgt. and Mrs. John Stamper
 Mr. and Mrs. Richard Stanhope
 Mrs. Frances Stevens
 Mr. and Mrs. Ronald Storman
 Mr. and Mrs. Frank Straizewski
 Mr. Straizewski
 Mr. Homer J. Strang
 Mr. and Mrs. C. Snyder Jr.
 Miss Dorothy Szczesny
 Miss Elinor Sullivan
 Mr. R. Szczesny
 Mr. and Mrs. R. C. Taylor, Sr.
 Wilfred Taylor
 Mr. and Mrs. Albert Tennett
 Mr. and Mrs. Paul Terenaini
 Mr. Frank Theriault
 Mr. and Mrs. Edward Thibeault
 Mr. and Mrs. Leo Thibodeau
 Mr. Harland Thompson
 Mr. and Mrs. Daniel Tolman
 Mr. and Mrs. Roy Tolman
 Betty Lou Tompkins
 Mr. and Mrs. John B. Toole
 Mrs. Regina Toole
 Mrs. Irene E. Torrey

Mr. and Mrs. Paul E. Tower
 Mr. and Mrs. Robert C. Trembley
 Mr. and Mrs. Thomas Valley
 Louis Vardamis
 Mr. and Mrs. Felix Veilleux
 Mr. and Mrs. Philip R. Veilleux
 Mr. and Mrs. Joseph Vettraino
 Dr. and Mrs. M. A. Vickers
 Dr. and Mrs. Martyn A. Vickers
 Mr. and Mrs. Leo Viner
 Miss Susan Waddell
 Miss Ann F. Washburn
 Miss Everett H. Washburn
 Mrs. Everett Washburn
 Miss M. Washburn
 Miss Patty M. Washburn
 Mr. and Mrs. Amos Webb
 Mr. and Mrs. Danville Webber
 Miss Minnie Weinberg
 Mr. and Mrs. Bernard Welch, Jr.
 Mrs. James R. Welch
 Mrs. Thomas Welch
 Mr. and Mrs. John Whitty
 Mr. and Mrs. McKeevor William
 Mr. and Mrs. L. E. Winchester
 Mr. and Mrs. C. H. Witham
 Mr. and Mrs. S. H. Witham
 Miss Mary A. Witty
 Miss Tersa Witty
 Capt. and Mrs. Harry Wood
 Dr. and Mrs. John Woodcock
 Dr. and Mrs. John Woodcock
 Mr. and Mrs. A. L. Woodman
 Mr. and Mrs. Esco Wright
 M-Sgt. and Mrs. J. Yatsko
 Mr. and Mrs. Floyd York
 Mr. and Mrs. Earl Young
 Mr. and Mrs. J. E. Young
 Mrs. Mary L. Young
 Mr. and Mrs. Paul Young
 Mrs. Ethel B. Zink





