

1939

# Mountain Climbing in Maine

Maine Development Commission

Follow this and additional works at: [https://digicom.bpl.lib.me.us/books\\_pubs](https://digicom.bpl.lib.me.us/books_pubs)

---

## Recommended Citation

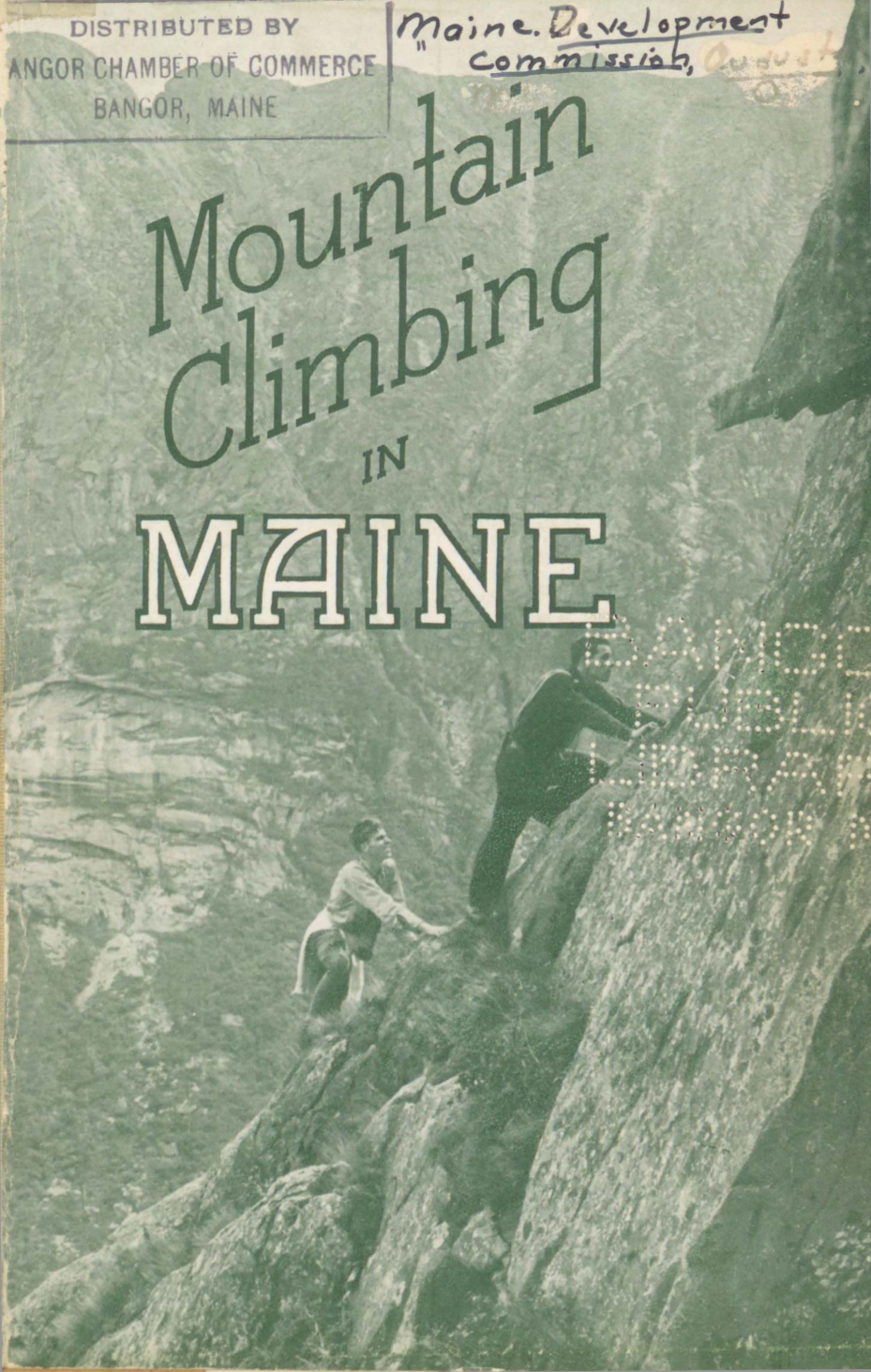
Maine Development Commission, "Mountain Climbing in Maine" (1939). *Books and Publications*. 318.  
[https://digicom.bpl.lib.me.us/books\\_pubs/318](https://digicom.bpl.lib.me.us/books_pubs/318)

This Book is brought to you for free and open access by the Special Collections at Bangor Community: Digital Commons@bpl. It has been accepted for inclusion in Books and Publications by an authorized administrator of Bangor Community: Digital Commons@bpl. For more information, please contact [ccoombs@bpl.lib.me.us](mailto:ccoombs@bpl.lib.me.us).

DISTRIBUTED BY  
BANGOR CHAMBER OF COMMERCE  
BANGOR, MAINE

Maine Development  
Commission, August

# Mountain Climbing IN MAINE







## MOUNTAIN CLIMBING IN MAINE



THE Maine Development Commission takes great pleasure in presenting for the first time a Guide to Mountain Climbing in Maine. It is realized that this guide is by no means complete. When it is realized that Maine has eleven mountains over 4,000 feet high and around one hundred over 3,000 feet high, together with those hundreds under 3,000, one can realize that it is almost impossible to put forth a complete guide.

Then too, many of Maine's mountain peaks are inaccessible. The object of this mountain booklet is to give the climber directions for getting to those accessible peaks, and to give him some idea about the trail and the climb.

We have purposely included a few mountain peaks that are somewhat inaccessible, also some of the lower mountains for the inexperienced. We have tried our best to get this information absolutely correct, but we realize there may be some errors in the data.

We would appreciate any suggestions that the climber may have. We would also appreciate having called to our attention any errors that may be found in this data, and the descriptions of any other mountains that should be included in our next issue.

This first issue will be small so that we can make corrections and expand the number of peaks listed.

It also should be remembered that many of Maine's mountains, although they are given one name are in reality mountain ranges. For illustration: Mt. Bigelow, Mount Saddleback and Mount Katahdin, although having one name each are in reality mountain ranges as each has several peaks.

Any suggestions should be addressed to the Maine Development Commission, State House, Augusta, Maine.

# MAINE FOR MOUNTAIN CLIMBING

For a great many years mountain climbers thought that it was necessary to cross the ocean to the Alps to enjoy their sport to the fullest.

Recently, however, it has become evident that our own mountains, here in the United States, need yield to none in their desirability.

With this knowledge has come a great revival of interest in the sport; a revival that annually sees additional thousands turning to this popular and healthful pastime.

Nowhere has this increased interest in mountain climbing been more pronounced than in Maine. Nowhere can the climber, of whatever degree of proficiency, find conditions more to his liking.

Maine has eleven mountains that are over 4,000 feet in height; a hundred that are over 3,000 feet high. Needless to say, many mountains are higher than those of Maine. None, however, offer more delights to the mountain climber. Mount Katahdin, for example, is conceded to be one of the most desirable mountains in the world from the climber's point of view.

Not the least of the rewards of climbing a Maine mountain is the view that is obtained from the top. Here the climber is not looking out over a cold, dead, melancholy countryside. Rather, he sees a panorama of vibrant, living beauty. He gets a bird's eye view of a region that is made up of verdant forests that embrace hundreds of glistening, smiling lakes, of quiet, little villages nestling in the valleys; of far-stretching farm lands basking in the Maine sun.

Mountain climbing, is, in a sense, symbolic. It symbolizes man's natural inclinations to climb ever upward; to surmount whatever obstacles are in his path. Thus mountain climbing affords spiritual as well as physical satisfaction. On attaining the summit one has achieved victory—and the view is his reward.

It is to be doubted if any sport furnishes better physical exercise. Every muscle in the body is brought into play. Too, the cool, clean



air that washes the mountain side contributes to give the climber a supreme sense of well-being when the day's climb is over. He is tired, but healthfully so. He is ready for the deep, refreshing sleep that follows exercise in the out-of-doors.

To the uninitiated, mountain climbing may seem to be a sport that taxes the stamina of the climber to the utmost; a sport that should be undertaken only by those who are young and vigorous. True, this may well be the case on slopes that are sheer and difficult. These should only be approached by the expert.

On the other hand, there is another side of mountain climbing of which many people are unaware, namely, in ascending the gentle, easy slopes that are found on so many Maine mountains. These are climbs that can be taken by whole families in ease and comfort; climbs in which not the least bit of danger lurks; climbs that open up whole new chapters in the appreciation of nature.

The person who is vacationing in Maine and who has a desire to take one or more of these easy climbs will find a wealth of opportunities on every hand. There is hardly a resort hotel or a sporting camp in the state that is not within sight of one or more of these mountains. Almost invariably well-defined trails lead to the summit. Often a fire tower and a friendly fire warden will be found at the top. These wardens are always glad indeed to welcome visitors and to point out principal points of interest. Many of these smaller mountains may be climbed and the return trip made within the space of just a few hours, a pleasant pastime to while away a morning or afternoon. Others will take a full day, allowing plenty of time for that supreme joy—lunch on the summit.

Between these easy climbs and the hardest ones are a number of "in between" climbs that may be taken in safety and comfort by the physically fit but should be avoided by the very young or the elderly. These climbs are becoming very popular with many Maine visitors and many are engaged in the interesting project of climbing every one in the state, negotiating several each year, talking over the next year's campaign during the winter, and returning to add several more to the list. Many of these climbs are listed



in this booklet. Information about others may be obtained locally.

To the well-established climber Maine is indeed a happy hunting ground. The allurements of Maine mountains for these finished climbers lies not in dominating height, but rather in infinite variety. In Katahdin, monarch of an illimitable wilderness, Maine offers what is admittedly the outstanding peak east of the Rocky Mountains—a transplanted bit of the High Sierra, a storehouse of botanical and geological history.

Many of the easier climbs mentioned previously need virtually no preparations whatever. On longer trips, however, or on those that take one some distance from the base of operations ordinary preparations and precautions are in order. Briefly they may be recounted as follows:

The Maine Statutes require non-residents, who light fires while camping, fishing, or hunting to employ guides, except at campsites maintained by the Maine Forest Service. As the lean-tos on The Appalachian Trail are such public campsites, the use of the Trail facilities complies with this requirement. However, as most of the trips here described (except the Katahdin Region) can be made from one's car or from a sporting camp in a day, except in the interior, this requirement will cause little inconvenience to the "outsider."



## EQUIPMENT

What preparation should be made or what equipment carried will be asked. The thing of greatest importance is to have an adequate appreciation of what you are undertaking. Do not undertake trips beyond your capacity. Allow ample time; above all, avoid traveling strange terrain after nightfall. Budget your time. Allow ample time for the view from the summit. Note the trees, flowers and bird life. With the various stops, you will do well to average throughout more than two miles an hour. Many trails are excessively rough or steep. Allow an hour per mile in climbing and double the allowance for the steep climbs. When you reach the summit, if it happens to be a Forest Service lookout, do not fail to climb the tower and, by use of the fire warden's direction finder, "spot" the distant peaks on the horizon. The fire wardens are friendly people, who are always glad to tell you of the points of interest. As you become more familiar with the Maine woods, you will discover that extended trips are possible from mountain to mountain, following the old lumber roads and Maine Forest Service telephone lines.

On a one day trip, the clothing and equipment needed is pretty much a matter of personal preference. You will want a small pack for your lunch and rain garment. It is often cold and windy on the summit; carry a sweater or extra wool shirt. Your shoes should be well broken in, thick-soled and at least one-half a size larger than street shoes. Wear one or two pair of wool hose over an old pair of silk or lisle socks. If you are susceptible to blisters, avoid this discomfort by hardening your feet through soaking in a tannic acid solution (one ounce of tannic acid powder to two quarts of water in a porcelain container; use several times for a quarter of an hour.) Poisonous snakes are unknown in Maine. Drinking water is usually available at frequent intervals; only on the highest

peaks will a canteen be desirable. If you climb in June or July, take along a mosquito and black fly preparation.

It goes without saying that, as against a possible mishap, three things are indispensable: a good compass, matches or fire-making material and something in the way of emergency food. Of course, you will have a map, and above all, will have studied it in advance so that you will have an accurate knowledge of the surrounding terrain and your route. A compass is useless if you haven't any idea of where you wish to go. Above all, do not travel alone.

For the equipment required on more extended trips the publications of various mountaineering clubs should be consulted. Users of The Appalachian Trail will find particularly helpful LIST OF HIKING, CAMPING, WINTER SPORTS AND TRAIL-CLEARING EQUIPMENT, issued by the Potomac Appalachian Trail Club, 901 Union Trust Building, Washington, D. C.





## THE APPALACHIAN TRAIL

In any booklet of mountain climbing or hiking in Maine attention should be called to the Appalachian Trail.

To one who is interested in hiking or to one who wants to take a vacation in the wilds, no better opportunity in this country is offered than that section of the Appalachian Trail crossing Maine.

The Appalachian Trail is the longest trail in the world today and extends from Maine's finest peak—the super, massive granite monolith which is Katahdin—some 2,054 miles south to Mount Oglethorpe in Georgia, the southern end of the Blue Ridge Mountains.

As stated the trail begins at Mount Katahdin in Maine, crosses some of Maine's finest peaks, through the wilderness of Maine for 266 miles.

The proposal of The Appalachian Trail was originally advanced in 1921 by Benton MacKaye of Shirley, Massachusetts. Forester, philosopher and dreamer, MacKaye, from his wanderings in the New England forests, had conceived the vision of a trail, which for all practical purposes should be endless. He gave expression to his plan in an article, THE APPALACHIAN TRAIL, AN EXPERIMENT IN REGIONAL PLANNING, in the October 1921 issue of the Journal of American Institute of Architects. MacKaye's proposal aroused interest among the outing clubs in the east and The Appalachian Trail Conference was formulated to transform this dream into a reality. Years of planning, labor, struggle and adversity, culminating in final success, have witnessed the practical completion of the project.

A large amount of credit for the completion of this Trail is due Myron H. Avery, a native son of Maine, now living in Washington, who has given unstintingly of his time and efforts.

As the Trail in Maine leads through an utter wilderness, often distant many days' journey from the nearest town or road, admittedly to become lost from the Trail in Maine would be a serious matter. But let no one, who would otherwise undertake this journey, be deterred by any such consideration; for those responsible for the Trail have devoted much emphasis to its marking.



Throughout, the Trail is most conspicuously indicated by an unbroken line of white paint blazes, which face the direction of travel. There are many side trails marked by blue blazes. On narrow or less-used sections, these blazes are within sight of each other; on better worn sections they are farther apart. As the insignia of the route, this marking is further supplemented by diamond-shaped galvanized iron or square metal markers, which bear the "AT" monogram and the legend "Appalachian Trail—Maine to Georgia."

## ACCOMMODATIONS

A unique feature of the Trail in Maine is that, although it leads through an utter wilderness, yet it is so located that comfortable accommodations may be found at the interval of a moderate day's journey. This seeming incongruity of finding accommodations each night on a twenty-four day journey of 266 miles in the wilderness is explained by the existence of sporting camps, a form of hostelry peculiar to Maine. These camps, attractively situated on some lake, are comprised of a group of log cabins with a central dining hall. Rustic yet comfortable, with their interesting hosts, they add much to the pleasure of travel along the Appalachian Trail in Maine. The available public accommodations along the Trail are listed in *GUIDE TO THE APPALACHIAN TRAIL IN MAINE*; see also map of the Trail route. Again the Maine Trail is unique in possessing this advantage.

One wanting detailed information on the Appalachian Trail in Maine should refer to the "Guide to the Appalachian Trail in Maine" published by the Appalachian Trail Conference, 901 Union Trust Building, Washington, D. C., price \$1.50.





## BAXTER STATE PARK

More than thirty years ago Percival P. Baxter, then a young member of the Maine Legislature, became keenly aware of the wild, unspoiled beauty of the Katahdin region.

In his mind's eye, he saw this region preserved for all time as a retreat for Maine's citizens and her visitors; as a place that would remain unchanged in its primitive glory through the ages; as a spot that would stand forever as a barrier to encroaching civilization; as a preserve where the birds and animals of the forest could find refuge for all time and where they could be admired for their grace and beauty by nature lovers.

Through five legislative sessions and through two terms as Governor, he worked unceasingly to have his dream come true; to have the state purchase and set aside a part, at least, of this region. Invariably, however, his plan met defeat. He was unable to convince his contemporaries of its worth.

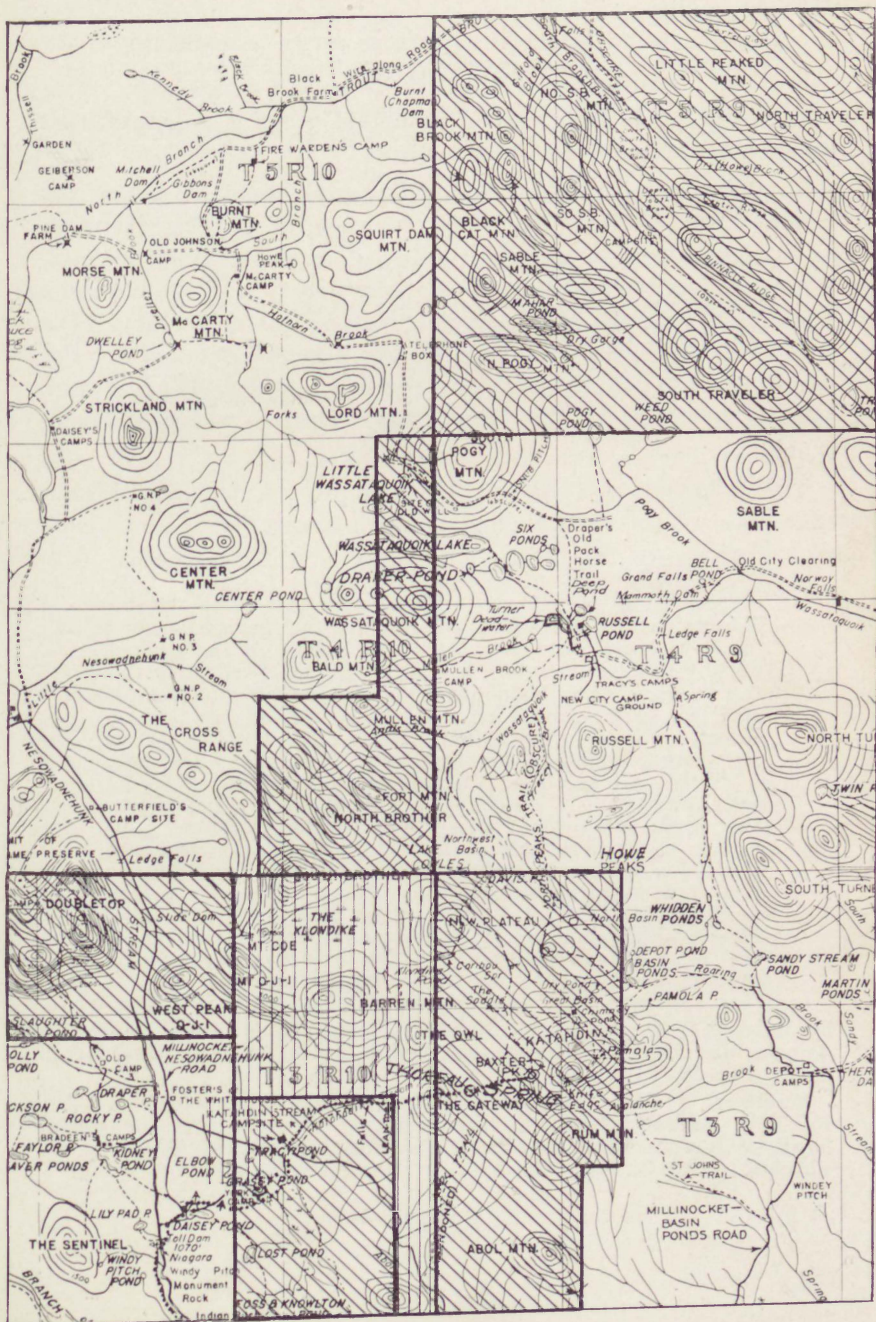
Undaunted, he decided to act on his own responsibility after he left office.

Up to the present, he has obtained 49,522 acres in the heart of the Katahdin region. This he has deeded to Maine to "be forever held by the state as Trustee, in Trust for the benefit of the people of Maine". The only other restrictions he has placed on this tremendously valuable gift is that it "forever be left in its natural wild state, forever be kept as a sanctuary for wild beasts and birds and forever be used for public forest, public park and public recreational purposes". In addition, other acres, some already acquired and some yet to be acquired will be added to the gift.

In accepting the gift, the Maine Legislature passed a law in 1933 that it should be named the "Baxter State Park". Governor Lewis O. Barrows, in a message to the 1939 Maine Legislature, said that: "These areas are accepted under the terms of a definite, unbreakable Trust. A State Trust of this character is a solemn obligation and I am confident that the word of the Sovereign State of Maine, once given, never will be broken."

Percival P. Baxter's gift to the citizens of Maine is an outstanding one; one that will be appreciated more and more as time goes on; one that will accrue to its donor the increasing appreciation of those who appreciate fully the everlasting glory of unspoiled, untrammelled nature.

Katahdin region showing Baxter State Park. Diagonal lines indicate full state ownership. Vertical lines part state ownership.





## KATAHDIN

In describing Maine's various mountain peaks it is natural that we should start with Katahdin.

Katahdin is not only the outstanding peak of Maine but of the eastern United States. To its preeminence the striking extent of its literature<sup>1</sup> more extensive than any other single American peak—bears conclusive evidence. To deal adequately with the Katahdin Region and its trails is beyond the scope of this publication. The latest map of the Katahdin Region and the most detailed description of the trails at Katahdin are contained in the 385-page, third edition<sup>2</sup>, of **Guide to The Appalachian Trail** to which reference should be made.

The following extracts from this Guidebook will afford some conception of this outstanding mountain mass:

"Katahdin, the northern terminus of The Appalachian Trail, is easily one of its most outstanding features. It is the mountain preeminent—without peer east of the Rocky Mountains! 'Kette-Adene'—Indian for the 'greatest mountain'—in every way responds to the tribute of the age-old name given the mountain by the aboriginal dwellers in the fastnesses of the Maine forests. Rising as an isolated, massive, gray granite monolith from the central Maine forest, broken only by the silver sheen of its countless lakes, Katahdin is indeed the monarch of an illimitable wilderness.

"From each cardinal direction, Katahdin's aspect is utterly different. It is not one but many mountains. From the south, seen over Togue Ponds on the Millinocket approach to the mountain, it is a huge, undulating rampart wall. From the east, over beautiful Katahdin Lake, it is the rim of a series of broken-open volcanic cones. From the north, it is merely the culminating peak of two parallel ranges which approach it from the level lands of the Penobscot East Branch Valley. From the west it is a long ridge, overtopping the outlying, protecting barrier ranges.

<sup>1</sup>See AN ANNOTATED BIBLIOGRAPHY OF MOUNT KATAHDIN, by Edward S. C. Smith and Myron H. Avery, Publication No. 6, The Appalachian Trail Conference, 901 Union Trust Building, Washington, D. C. (\$1.10).

<sup>2</sup>Prepared by Maine Appalachian Trail Club. Obtainable from Maine Publicity Bureau, Portland, Maine (\$1.50) or from the Appalachian Trail Conference, 901 Union Trust Building, Washington, D. C. A supplement to this Guide, issued in 1939, is available at a cost of \$0.25.

"The mountain itself may be aptly, if not elegantly, described as an enormous broad fishhook. The projecting point is the broad, rounded dome of Pamola (4,902 ft.). To the Indians, Pamola was the deity of the mountain. In awe of Pamola's wrath, the Indians never ventured near it. Those who accompanied Charles Turner in 1804 told him how Pamola had destroyed a party of Indians, who had previously ventured into the fastnesses of Katahdin, so that none now dared approach the mountain. Enclosed in the bend of the hook, which extends at first south, then west and north, are three enormous basins—Great, North and Little North. These are open to the east. The Great Basin, at an elevation of 2,910 ft., has two ponds—Chimney, about eight acres in extent, and a smaller pond, known as Cleft-rock Pool. From their floors, sheer gray or pink granite walls rise abruptly two thousand feet to the rim above.

"Encircling the Great Basin for three-quarters of its circumference, is the famous Knife-Edge, a narrow wall of vertically-fractured granite. In many places one may stand astride of it; below precipitous slopes fall sheer for 1500 feet. The Knife-Edge leads gradually upwards, past South Peak to Baxter Peak (formerly Monument Peak), just thirteen feet under a mile in height. Here is the summit of Katahdin. This, too, is on the rim encircling the Great Basin. The broad summit of Katahdin, The Tableland, extending south and west for a mile, and north for about three miles, is decidedly unexpected after the impression of a narrow mountain rim, formed by the views from below. To the north—and forming the shank of the hook—The Tableland descends to its lowest point, The Saddle. It then rises to Hamlin Peak (4,751 ft.) from which a long bare ridge, Hamlin Ridge, leads east, separating the Great and North Basins. It is a favorite route on the mountain. Beyond Hamlin Peak are the bare Howe Peaks (4,612 to 4,734 ft.), then a long ridge, covered at first with a dense growth of scrub and then by a spruce and fir forest, leads to Wassataquoik Stream. A ravine divides the northern end of the mountain. On the east is the square bulk of Russell Mountain; to the west is Tip-Top, on the slope of which can still be seen the remains of an old sluice, used to drop logs into a pond formed by the splicing together of two streams in E. B. Draper's Wassataquoik lumber operations in 1910. High on the slope of Tip-Top is a rarely visited pond.

"West of Katahdin is the Klondike, a great elevated, forbidding spruce-flat, lying between Katahdin and the L-shaped Katahdinauguoh. The Klondike is a land of mystery. Other than the famous Penobscot Indian Joe Francis, who hunted moose there and named the region because of its suggestion of the wilderness of the Alaskan Klondike, few parties have traversed the Klondike. No trails lead into it or through it. At its upper end, it is a broad level expanse, enclosing several deadwaters teeming with trout.



The Middle Branch of Wassataquoik Stream rises here. Except by climbing over the surrounding range, the only approach to the Klondike is a tortuous way from the north-east along the stream, where it has forced its way through the narrow dark and gloomy defile between Fort Mountain and the Northwest Plateau.

"On the west side of the mountain, high above the Klondike, are three other ravines. Perhaps the most interesting is the Northwest Basin (2,800 ft. app.), discovered less than half a century ago, on whose shelf are located 5 ponds. A waterfall, dropping from the slope of the mountain is the inlet of Davis Pond. The outlet of Lake Cowles cascades from the shelf to the Northwest Basin Brook below. On the upper reaches of the Northwest Basin Brook is a long line of waterfalls.

"Klondike Pond (3,435 ft.) on the southern side of the Northwest Plateau is a long, narrow body of water, a third of a mile in length, in a wild and picturesque ravine located high above the Klondike. Witherle Ravine is an enormous chasm, near The Gateway, descending to Katahdin Stream under the shadow of the cliffs on The Owl.

"What has been said is a mere enumeration of the outstanding feature of Katahdin. The casual climber, who thinks he has seen all after he reaches Baxter Peak, knows little of the wonders of Katahdin. It is a mountain not for a one day's trip but for many weeks and to which the traveler will return again and again with increasing pleasure and enthusiasm."



## THE ROAD APPROACHES TO KATAHDIN

There are four highway approaches to Katahdin—from each cardinal point of the compass. The one most generally used is from the south. This route begins at Millinocket, distant some 24 miles from Mattawamkeag via Maine Highway 157 (63 miles from Bangor on U. S. Route 2). This route, mostly dirt road, extends some 26 miles to a terminus at Roaring Brook. If, however, one chooses to approach the mountain on its southwest side, via the Appalachian Trail, at the fork of the road, 16.2 miles from Millinocket, the Old Nesowadnehunk Tote-road, now the Millinocket-Greenville Road, leads some 9.7 miles farther to the Katahdin Stream Campsite.

The route from the west is from Greenville over the Greenville-Millinocket Road, a distance of some 65 miles to the Katahdin Stream Campsite. (A permit must be obtained from the Great Northern Paper Company at Bangor, Maine, in order to continue east on this road beyond the gate at Ripogenus Dam.)

The route from the east is from Stacyville on Maine Highway 11; it follows trails little used these days.

From the north the approach is from Patten, a distance of 26 miles via the Grand Lake Fire-road. From here the summit of Katahdin is some 34.8 miles distant to the south by trail.

From the termini of the various road approaches above listed, trails extend to the summit. From the south the Basin-Chimney Ponds Trail leads 3.4 miles to the Great Basin and Chimney Pond. From here the summit is reached by four routes. From the west the Appalachian Trail leads from the Millinocket-Greenville road, 5.24 miles to the summit. The trail approaches from the east are via the Wassataquoik Tote-road, the Katahdin Lake Tote-road, and the North Peaks Trail. From the north, at the end of the Grand Lake Fire-road, a combination of the Trout Brook Tote-road, the old Pogy Road and the Howe Peaks Trail leads to the summit.

The various trails at Katahdin may be roughly grouped as follows: The approach Trails (A); the trails from Chimney Pond (B) and the trails on the mountain (C). The brief resume herein given follows this order.



## A—THE APPROACH TRAILS

### 1—The Appalachian Trail (Hunt Trail—5.24 miles).

This is the shortest route to the summit, leaving the Millinocket-Greenville automobile road at the Katahdin Stream Campsite. For 2.4 miles this trail is above timber line and portions of the ascent over the boulders on the Hunt Spur are quite spectacular. Intensively marked by white paint blazes, this route is recommended for first ascents and climbs made under adverse weather conditions. The Katahdin Stream Campsite with six lean-tos and a ranger's cabin, where some supplies may be purchased, is located where the trail leaves the Millinocket-Greenville Road.

### 2—The Basin-Chimney Ponds Trail (3.4 miles).

This trail extends from the terminus of the Millinocket-Basin Ponds Road, 26 miles from Millinocket to Chimney Pond. It follows a worn tote-road ascending steeply as far as Basin Ponds. Beyond it ascends steadily with a rough footway to Chimney Pond. Here accommodations are available in the form of lean-tos and at the State Camp.

### 3—The St. John's Trail (4.5 miles).

This is an alternative route to the summit, which leaves the Millinocket-Basin Ponds Road at 21.9 miles from Millinocket. It is an outstanding route to the mountain, leading through the magnificent mature white birch forest and up the East Slide to Keep Ridge, which is traversed to Pamola on the Knife-Edge. Part of this route follows the historic Keep Path, cut to the mountain from the east in 1848 by "Parson Keep."

### 4—The Wassataquoik Tote-road (26.4 miles).

This route to Katahdin is almost a century old. From Stacyville it leads some 6 miles to the Penobscot East Branch at the Old Hunt Farm. Beyond it follows Wassataquoik Stream to the New City Campground, a point 26.4 miles distant from Stacyville. From here the climber may reach the summit by a traverse to the south

over the Howe Peaks Trail, or by the Northwest Basin Trail. Both routes involve considerable exertion but afford access to little-known sections of the mountain.

#### **5—The Katahdin Lake Tote-road (5.25 miles).**

This route leaves the Wassataquoik Tote-road at a point 15.9 miles from Stacyville. The old tote-road, recently cleared, leads 5.25 miles to the Katahdin Lake Camps with their magnificent view, and then continues, via the Katahdin Lake Wagon Road, for 3.3 miles farther west to the Millinocket-Basin Ponds Road, 1.7 miles below its terminus at Roaring Brook. From this point the climber has a choice of several routes to the mountain from Chimney Pond.

### **B—TRAILS TO THE MOUNTAIN FROM CHIMNEY POND**

The trails described in this section lead on to the mountain from Chimney Pond, the approach to which is described in the preceding section.

#### **6—The Saddle Trail (2.2 miles).**

This is the easiest route from Chimney Pond to the summit. It ascends the old Saddle Slide to the lowest point of The Tableland and then turns south toward the summit with a gradual ascent. A portion of the course of the trail, for some 0.2 miles along the course of the old slide, is extremely rough.

#### **7—The Dudley Trail (1.25 miles).**

This is a much frequented route from Chimney Pond up the broad slope of Pamola. It affords a magnificent outlook over the Great or South Basin below. Beyond Pamola there is a traverse of 1.1 miles over Chimney Peak and the Knife-Edge to Baxter Peak. This route, returning to the Great Basin by the Saddle Trail or the Cathedral Trail, is a favorite one day trip on the mountain. While the distance is only five miles, it involves very considerable exertion and climbing. An old trail from Basin Ponds joins the Dudley Trail on the upper slope of Pamola.

### **8—The Cathedral Trail (1.7 miles).**

This is the shortest trail from Chimney Pond to Baxter Peak, the summit of Katahdin. It involves a longer climb than the Saddle Trail and crosses an extensive boulder field but does afford extraordinary views of the Great Basin below. On its upper portion are two forks, leading to the summit and to the Saddle respectively.

### **9—The North Basin Trail (1.25 miles).**

This route leaves the Chimney-Basin Ponds Trail about half a mile below Chimney Pond. It leads east past the spur of Hamlin Ridge into the North Basin, one of the glacial cirques at Katahdin with its ponds.

### **10—The Hamlin Ridge Trail (1.5 miles).**

Hamlin Ridge is the eastward projecting spur, dividing North and Great Basins. This trail leads up along the crest of this ridge. It is a superbly scenic route, much of the time above timber-line. It leaves the North Basin Trail at the foot of Hamlin Ridge and intersects the Howe Peaks Trail at Hamlin Peak. Combined with the other trails from Chimney Pond, this affords a magnificent circuit of the less-frequented northern part of the mountain.

## **C—THE TRAILS ON THE MOUNTAIN**

### **11—Baxter Peak Cut-Off (1 mile).**

This is a route which diverges from the Saddle Trail and joins the Appalachian Trail at Thoreau Spring, 1 mile southwest of Baxter Peak. It avoids the climb over the summit in traversing the southern portion of the mountain.

### **12—The Caribou Spring Trail (0.9 mile).**

This route leads from The Saddle, the lowest point on Katahdin to Caribou Spring, approximately 0.25 mile west of Hamlin Peak. At Caribou Spring the routes to the Northwest Basin and Klondike Pond begin.



### 13—The Northwest Basin Trail (6.8 miles).

This is an extremely difficult route involving considerable exertion. From Caribou Spring this trail leads for a mile west along the crest of the open Northwest Plateau. Then, it descends steeply into Northwest Basin with its four ponds and glacial features. Beyond it crosses Northwest Basin Brook and leads with extremely rough travel over talus slopes, then follows Wassataquoik Stream to the New City Campground. This route is very sketchily marked.

### 14—The Howe Peaks Trail (6.7 miles).

This route follows, on its upper portions, the old Tracey and Love Trail originally cut in 1887. It leads from the New City Campground south into the ravine between Russell Mountain to the east and Tip-Top to the west, climbing the north end of the mountain, after a distance of some 5 miles it reaches the open Tableland which is followed south to Hamlin Peak.

Another trail at Katahdin, affording access to an interesting region is the Wassataquoik South Branch Trail (6.3 m.). This follows the valley between Katahdin and Turner Mountain from the Roaring Brook terminus of the Millinocket-Basin Ponds Road to Wassataquoik Stream. Beyond the route continues to Wassataquoik Lake and affords access to the extensive mountain region north of Katahdin.

The historic Abol Trail, one of the earliest routes to the mountain has been obliterated, by lumber operations as has the Sandbank Trail, a route to Katahdin Lake from the southeast.

For a complete description of the trails herein listed at Katahdin, and the points of geographical and historical interest associated therewith, all climbers will wish to obtain **Guide to The Appalachian Trail in Maine** (1938) and Supplement (1939) as listed in footnote 2.

A description of some of Maine's mountains, together with details of the climb.

## MOUNT ABRAHAM

*Latitude 44-58*

*Town—Mt. Abraham T.*

*Altitude 4,049*

Fire Tower.

*Longitude 70-19*

*County—Franklin*

*Base 1,160*

### Maine Forestry Service Trail

Length of Trail—7 miles.

Time required to ascend—3 hrs. 30 min.

Time required to descend—3 hrs.

Approach is by way of route 27 from Farmington through Kingfield. Cross the bridge at Kingfield Village and swing left on a dirt road. Drive 5.5 m. on this road. The last of the road is rough and not much more than a wood road. It is passable for any car. There is a chance for one or two cars to be left at the foot of the trail. The trail leads off to the left at a black and white sign marked "Trail to Mt. Abraham." From here it is 3 m. to the watchman's camp. From the watchman's camp to the tower is 2 m. From the foot of the trail to the watchman's camp it is very easy grade and a fine trail free of underbrush. From the camp to the tower it is steeper climbing, but a good trail. There is an excellent spring at the camp. The next mile of the trail is rocky, the whole top of the mountain is a boulder field. A splendid panoramic view from the top. A fine view of Crockertown Mountain and Sugarloaf, which is the second highest in the State. The peak where the tower is located is on a ledge, thus void of vegetation. The rocks are of the early geological age. Some rocks near the top are marked by glacier which passed in the glacial period.

## AZISCOOS MOUNTAIN

*Latitude 44-50*

*Town—Lincoln Pl.*

*Altitude 3,215*

*Longitude 71*

*County—Oxford*

*Base 1,246*

Length of Trail—3 miles.

Time required to ascend—1 hr. 15 min.

Time required to descend—1 hr.

Fire Look-out Tower.

Aziscoos received its name from the Indians. The name was first given to Aziscoos Falls on the Magalloway River located just below Aziscoos Dam. The word Aziscoos means "singing water." We have Aziscoos Falls, Aziscoos Dam, Aziscoos Lake and Aziscoos Mountain. The mountain is dome shaped with two dome shaped summits. The lower portions of the mountain are covered with a hard wood growth while the upper areas are of the black growth. The ledges towards the top are generally rolling and are broken and fissured to a great extent.

At the bases of the greater ledges there are vast windrows of gigantic boulders. This mountain stands out by itself not immediately connected with any other range. The view from Aziscoos is superb.

It takes in all of the Rangeley region and northern New Hampshire including the White Mountains. There is a good rest room at the foot of the tower. There is also a splendid chance to eat your lunch.

Approach is by way of route 26 from Newry to Errol, N. H. From Errol take route 16 to Wilson's Mills. The trail begins in front of Aziscoos House which is on the main road. Cars may be left here. Go to the eastward through field and pasture to the sign "Trail to the Look-out Tower." Lower part of trail is over old wood road quite open in places. After passing watchman's camp trail grows rougher and steeper. The last 0.25 m. is over practically bare ledges. Drinking water is from a spring half way to watchman's camp and two springs at watchman's camp.

## BALD MOUNTAIN

*Latitude 44-37*  
*Town—Perkins Pl.*  
*Altitude*

*Longitude 70-21*  
*County—Franklin*  
*Base 780*

*1st peak 2,386*

*2nd peak 2,572*

No Look-out Tower.

Length of trail to highest peak—3.5 miles.

Time required to ascend—3 hrs.

Time required to descend—2¼ hrs.

Approach is by way of route 4 to Wilton, and 156 from Wilton. Drive on 156 for 7 m. from the town of Wilton. The trail may be located on the left hand side of the road. Look for a cottage with an open porch on the right hand side of the road. Entrance to the trail is about 0.5 m. from the cottage on the left. Cross metal culvert to get to the entrance of the trail. 3 or 4 cars may be left here at the entrance of the trail. Trail starts by crossing brook fifteen feet from road and across field about 100 yards to edge of woods. Look for blaze on trees. Climbing starts as soon as you enter the woods and you have the same grade for about half way up. The trail is fairly well marked all of the way by rags on the trees. Very many interesting rock formations. Splendid views from the top. Not a hard climb.

## BALDPATE MOUNTAIN

*Latitude 44-36*  
*Town—Grafton*  
*Altitude 4,080*

*Longitude 70-52*  
*County—Oxford*  
*Base 1,500*

No Fire Tower.

Length of Trail—3.72 miles.

Time required to ascend—3 hrs. 45 min.

Time required to descend—2 hrs.

## Appalachian Trail

Approach is by way of route 2 from Rumford or Bethel. Near Rumford Point turn onto route 5 follow this to Andover. At Andover Village



swing left onto a dirt road. Drive to Frye Brook which is around 4.5 m. from the village of Andover. The trail leads off to the left from this highway near Frye Brook.

There is ample parking space for cars. The trail starts near Frye Brook leading off to the left of the highway. At 0.28 m. is a splendid lean-to and facilities for cooking and staying over night. The first part of the trail follows closely Frye Brook where there are several cascades, waterfalls and canyons, very interesting. At 0.57 m. past the Flume Sheer Falls in narrow canyon very spectacular. The first part of the climb is easy and gentle, the last is steeper. The trail leads over Little Baldpate and from here on you need to follow the cairns carefully. The trail is well marked by Appalachian Trail blazes. It is a very interesting climb and the view from the top is exceptional. The Appalachian Trail leads over the peak and down the other side of Baldpate to route 26. This mountain affords a splendid opportunity for parties to split—one party going up one side of the mountain and the other party going up the other side. One party could ascend the mountain from the Andover side and the other ascend from the Grafton side. The party going up from the Andover side would descend into Grafton Notch taking the car left there by the other party and vice versa. It is 7.2 m. from where cars are left at Frye Brook up the mountain and down the other side to route 26.

## BOUNDARY BALD MOUNTAIN

*Latitude 45-47*

*Town—Bald Mountain T 4 R 3*

*Altitude 3,000*

*Longitude 70-12*

*County—Somerset*

*Base 1,588*

Fire Tower.

Length of Trail—4.5 miles.

Time required to ascend—2½ to 3 hrs.

Time required to descend—2 to 2½ hrs.

Boundary Bald Mountain probably got its name because it is so near the International boundary between United States and Canada, and it is entirely free from bushes and tree growth on the top. There is a small waterfall near the watchman's camp.

Approach is by way of route 201 from Bingham and Jackman. After leaving Jackman, follow route 201 to the Heald Pond Camp sign. Turn right and drive 3 m. over a good gravel road to the Heald Pond Camps. Cars may be left here. A good trail and easy to follow. Some parts of the trail are quite steep. Plenty of drinking water along the trail.

## BEAR MOUNTAIN

*Latitude 45-17*

*Town—Lakeville*

*Altitude 740*

*Longitude 68-6*

*County—Penobscot*

*Base 304*

Length of Trail—2.5 miles.

Time required to ascend—1 hr.

Time required to descend—45 min.

Fine drinking water near summit. Bear Mountain lies 3 m. south of Dill Ridge Mountain. Beautiful Sysladobsis Lake is at the base of the mountain and seems right under your feet. There is no trail from the

summit down to the lake, but one may descend this way without much difficulty and see some very interesting rock formation.

The approach is by route 16 from Lincoln. Follow route 16 through Springfield Village and turn a sharp right at the top of the hill just beyond the village. Continue on a dirt road to Bay View Camps. Cars may be left here. The distance from Springfield Village to Bay View Camps is 7 m. If desired a guide may be obtained at the camps for the ascent. This is not a high mountain, but a very interesting climb and a beautiful view from the top.

## MOUNT BIGELOW

*Latitude 45-8*

*Town—Dead River Pl.*

*Altitude 4,150*

*Longitude 70-16*

*County—Somerset*

*Base 1,122*

Two Trails.

Fire Look-out Tower.

Mt. Bigelow was named for Major Timothy Bigelow. Major Bigelow was with Benedict Arnold's famous march through Maine to Quebec. It was believed by Benedict Arnold that if they could get to the top of this mountain they could look into the city of Quebec, so Major Bigelow was sent to the top of the mountain. The Daughters of the American Revolution have placed a plaque on a large boulder at the foot of the Parsons Trail commemorating this event.

### Appalachian Trail

Length of Trail—4.62 miles.

Time required to ascend—3 hrs.

Time required to descend—2 hrs.

The Appalachian Trail crosses the Bigelow Range. In ascending Mt. Bigelow by way of the Appalachian Trail follow route 16 from North New Portland. The trail starts from the highway to the left at about 1.2 m. beyond the Dead River Post Office very near the Dead River School House. Follow the Appalachian blazed trail. For nearly 3 m. the trail is gradual. Then it becomes steeper and rougher. At about 3 m. from the highway you get an excellent view of Old Man's Head. There are several side trails from either side leading to interesting points. The distance from the highway to the Forestry fire look-out tower on the East peak is about 4.62 m. An unlocked steel cabin at the foot of the tower affords protection from storms. The Appalachian Trail leads down the East peak by the intersection of the Parson's Trail, over the West peak and by the Horns. From here it turns left and down the back side of the mountain crossing highway 27 and onto Sugarloaf Mountain. There is a lean-to a short distance from where the Parson's Trail intersects the Appalachian Trail. From the Horns there is a marked trail leading to Stratton Village. No water on trail. Be sure to take plenty of water.

### Parson's Trail or Fire Look-out Trail

Length of Trail—2.75 miles.

Time required to ascend—2 to 3 hrs.

Time required to descend—1 hr. 30 min.

This trail starts from highway 16 about 1 m. west of the Appalachian

Trail. From the black road you may drive your car in about 1 m. on the trail. This automobile road was recently built by the CCC. At this point plenty of parking space. From where you leave the car to the top it is very steep all the way.

The trail is wide and very easy to follow. It intersects the Appalachian Trail at a beautiful spot between the East and West peaks. Continuing straight ahead from the intersection a short distance you come to the fire warden's cabin. This is a beautiful log structure with a porch looking out over the valley between Bigelow, Sugarloaf and Crocker. Drinking water will be found all along the trail.

## BLACK MOUNTAIN

*Latitude 44-26*

*Town—Sumner and Peru*

*Altitude 2,200*

*Longitude 70-28*

*County—Oxford*

*Base 563*

Length of Trail—2.2 miles.

Time required to ascend—1½ hrs.

Time required to descend—45 min.

Approach is by way of route 4 from Auburn, taking route 117 at Turner, going through Buckfield to East Sumner. At East Sumner go directly to Sumner. Just north of Sumner take left fork. At 0.8 m. from Sumner take right fork, go 1.5 m. to home of Horace Crockett where cars may be left. The road from Sumner to the Crockett home is passable from mid-May to end of season. Pass in front of house, keeping right on old road. Pass old barn at 0.2 m. and keep right. At 0.3 m. straight ahead enter an old field, taking right hand road. Pass tumbled down building, reaching fence at 0.5 m. Trail unmistakable from this point. Brook at 0.9 m. and at 1.3 m. ledge affording fine views to south and west. Continue over ledges to the top. A short distance beyond the summit is a sulphur spring. An interesting bog is near the top.

## MOUNT BLUE

*Latitude 44-44*

*Town—Avon*

*Altitude 3,187*

*Longitude 70-21*

*County—Franklin*

*Base 1,160*

Fire Tower.

Length of Trail—1.75 miles.

Time required—1 hr. 30 min.

Approach is by way of Wilton on route 156 to Weld. In Weld Village turn right at the four corners onto a dirt road. Drive on the dirt road going about 0.5 m. to a fork in the road and keep left on the improved road. Follow around on this road for about 4 m. going around the Center Hill Development. You will easily pick up the Mount Blue fire look-out trail. Ample parking space at the foot of the mountain. The trail to the top is in excellent condition and an apparently easy climb. It is 0.5 m. to the fire warden's cabin. Here is one of the finest springs in Maine coming out of the side of the mountain. The trail to the top is a little steeper. Beautiful view from the top of the mountain.



## MOUNT BOARSTONE

*Latitude 45-25*  
*Town—Elliottsville*  
*Altitude 1,850*

*Longitude 69-20*  
*County—Piscataquis*  
*Base 500*

Fire Lookout Tower.

### Appalachian Trail

Length of Trail—1.5 m.

Time required to ascend—1 hr. 45 min.

Time required to descend—1 hr.

Approach is by way of route 15 from Guilford through Monson. Just beyond Monson turn right on a dirt road. Follow dirt road for about 6 m. crossing Wilson Stream. Bear left up grade across the C. & P. Railroad tracks. A short distance beyond the railroad tracks is the start of the trail. Cars may be left here. Follow old road for about 1 m. to the old Fox Farm on Moore's Pond. From here follow the fire watchman's trail to the top, it is about one-half mile. Boarstone affords a magnificent panoramic view, marked by innumerable lakes with beautiful Lake Onawa at its base.

## BURNT MEADOW MOUNTAIN

*Latitude 43-54*  
*Town—Brownfield*  
*Altitude 1,580*

*Longitude 70-55*  
*County—Oxford*  
*Base 372*

Length of Trail—1.5 miles.

Time required to ascend—1 hr.

Time required to descend—45 min.

Approach is by way of route 113 from Standish through West Baldwin, Hiram and East Brownfield. At East Brownfield take route 160. About half way to Brownfield Village route 160 swings sharp to the left. Take this turn on 160 and in a short distance on the right is a sign. This is the Tall Pine Trail to the top of the mountain. This trail is in very good condition and an easy climb.

There is another trail called the Frost Trail leading up from the other side of the mountain. To reach this trail go into Brownfield Village and turn left on a dirt road. The trail leads off to the left from this dirt road.

## DEER MOUNTAIN

*Latitude 45-1*  
*Town—Parkertown*  
*Altitude 3,455*

*Longitude 70-55*  
*County—Oxford*  
*Base 1,467*

Fire Tower.

Length of Trail—4 miles.

Time required to ascend—2 hrs. 30 min.

Time required to descend—1 hr. 30 min.

Approach is by route 26 from Newry, Maine to Errol, N. H. then route 16 to Wilson's Mills, or from Rangeley route 16 to Wilson's Mills. Trail starts from highway at trail sign at Otter Brook 7 m. from Oquossoc or 14 m. from Aziscoos Dam. Several places along the trail for drinking, including one spring. The view from the top of lakes and mountain scenery is excellent.

## CARIBOU MOUNTAIN

*Latitude 44-21*  
*Town—Mason*  
*Altitude 2,828*

*Longitude 70-55*  
*County—Oxford*  
*Base 795*

Three Trails.

### Bog Road Trail

Length of Trail—5.5 miles.  
Time required—3 hrs. 15 min.

Approach is by way of route 2 from Bethel. Turning to the left on a dirt road about 1.5 m. west of West Bethel. Cars may be driven nearly to the end of the road, about 2.5 m., then a wood road is followed for 0.25 m. at which point the trail begins. Its start is somewhat obscure, but traces of the old telephone wire to the top will be found now and then which will help the climber. From the top the U. S. Forestry Service Trail from Evans Notch comes in on the right. The joint trail bears left to the ruins of an old shelter. Just above is a spring. A short walk brings one to the top.

From Evans Notch there are two trails, one up Morrison Brook and the other up Mud Brook. The approach to these trails is by way of route 2 from Bethel turning to the left on the Evans Notch Road at Gilead.

### The Morrison Brook Trail

Length of Trail—2.5 miles.  
Time required—2 hrs.

Leaves the new road through the notch about 1.5 m. south of Hastings and follows the brook most of the way to the top. 0.5 m. below the summit the trail from West Bethel comes in on the left.

### Mud Brook Trail

Length of Trail—2.5 miles.  
Time required—2 hrs.

Built in 1933, leaves Evans Notch road 2 m. south of Hastings and 30 feet north of Mud Brook Bridge. The approach to the summit is from the south and connects there with the Bog Road Trail.

## COBURN MOUNTAIN

*Latitude 45-28*  
*Town—Upper Enchanted*  
*Altitude 3,718*

*Longitude 70-8*  
*County—Somerset*  
*Base 1,934*

Fire Tower.  
Length of Trail—4 miles.  
Time required to ascend—2 hrs. 30 min.  
Time required to descend—1 hr. 30 min.

Approach is by route 201 from Bingham through The Forks. About 11 m. beyond The Forks look for the fire tower trail on the left hand side of the road. The trail is in good condition and there is drinking water at the warden's cabin. Very fine view from the top.

## DILL RIDGE MOUNTAIN

*Latitude 45-19*

*Town—Lakeville Pl.*

*Altitude 948*

*Longitude 68-6*

*County—Penobscot*

*Base 298*

Fire Tower.

Length of Trail 2.5 miles, from automobile road.

Time required to ascend—1½ hrs.

Time required to descend—1 hr.

From the base of the mountain there are two trails, one going direct to the lookout tower, the other continuing around the base to the head of Pug Lake. Here there is a warden's camp. Trail around by the lake is the most picturesque, but 0.5 m. longer than the other trail.

Approach is by way of route 2 from Bangor to Lincoln. At Lincoln take route 16, going to Springfield village. At Springfield turn right at the top of the hill, take next second right hand turn, continue until you see the fire look-out trail sign. From Springfield it is 5 miles to where you leave your car. Cars may be parked by the side of the road. The trail is in exceptionally good condition all through the summer and fall. There are two nice springs along the trail. Very interesting rock formations on the mountain. From the look-out tower an excellent view of twelve to fifteen lakes may be seen and on a clear day a beautiful distant view of Mount Katahdin.

## EAST ROYCE MOUNTAIN

*Latitude 44-18*

*Town—Batchelders Grant*

*Altitude 3,133*

*Longitude 71*

*County—Oxford*

*Base 960*

### East Royce Trail

Length of Trail—1.3 miles.

Time required to ascend—1 hr. 15 min.

Time required to descend—45 min.

Approach is by way of Route 2 from Bethel to New Hampshire line. Pass through West Bethel and the village of Gilead. Just after leaving the village of Gilead turn left at sign marked "Evans Notch Road." Go 3.1 m. to a Y in the road. Take the left turn, the sign here points to N. Chatham and Fryeburg. Go on this road 4.5 m. until you come to a White Mountain National Forest sign marked "East Royce." The trail starts from here on the right hand side of the road. A car may be left at the little opening on the right hand side of the road. This trail is a very good one and well marked. If climbed during the latter part of May the trail on both sides is lined with painted trilliums. A short distance from the foot of the trail is a beautiful waterfall. As height is gained there are fine views of Evans Notch, Kezar Lake and the Baldface range to the south. The Carter and Presidential ranges can be seen from the top as well as Caribou, Speckled and Blueberry across the notch. A good spring will be found by a short side trail from the top. Almost due south is West Royce (3,215) in New Hampshire, and the trail continues to other peaks of the Baldface range. From the saddle or between East and West Royce a trail leads to the Wild River road which forks right at the "Y" previously mentioned and continues to the WMNF guard station.



## HEDGEHOG MOUNTAIN

*Latitude 46-56*  
*Town—T 15 R 6*  
*Altitude 1,594*

*Longitude 68-33*  
*County—Aroostook*  
*Base 580*

Length of Trail—0.5 mile.

Time required to ascend—30 min.

Time required to descend—20 min.

Approach is by way of route 11 from Ashland through Portage toward Winterville. About 14 m. from Portage look for Maine Forestry Service camp. The trail starts from here. There is a good trail to the top. Plenty of chance to park cars at the camp, and also a lunch ground and spring water. There is drinking water to be found along the trail.

## PLEASANT MOUNTAIN

*Latitude 44-2*  
*Town—Denmark*  
*Altitude 2,007*

*Longitude 70-48*  
*County—Oxford*  
*Base 462*

Fire Tower.

Length of Trail—about 1.5 miles.

Time required—1 hr.

Approach is by way of route 18, leading out of Portland. Go through Bridgton about 3 m., turning to the left on a dirt road near the New York Cabins. Drive on the dirt road about 2 m. to farm buildings. Cars may be left here. The trail to the top is by way of the fire look-out trail. A beautiful spring about half way up. A fairly easy climb. Beautiful lake and mountain scenery from the top. Amethysts have been found on the mountain.

## RICE'S HILL

*Latitude 44-12*  
*Town—Waterford*  
*Altitude 1,320*

*Longitude 70-44*  
*County—Oxford*  
*Base 492*

Length of Trail—0.5 mile.

Time required to ascend—30 min.

Time required to descend—20 min.

Approach is by route 118 from Norway. Go to Waterford Village, turn right as you enter the village, leave car near the church. The church is about 0.25 m. from the turn. The trail starts a short distance above the church, turning left off the road. Very easy climb, nice trail, beautiful view from the top.

## RUMP MOUNTAIN

*Latitude 45-12*  
*Town—Parmachenee T 5 R 5*  
*Altitude 3,647*

*Longitude 71-4*  
*County—Oxford*  
*Base 1,800*

Length of Trail—2.5 miles.

Time required to ascend—1 hr. 30 min.

Time required to descend—1 hr.

No Fire Look-out Tower.

Native tradition states that this mountain was originally called

"Camel's Hump," owing to the fact that there are two distinct peaks at the very summit. Rump being a much easier word to use than "Camel's Hump" the natives naturally fell into the use of the name "Rump" when speaking of or in describing the mountain.

From the summit of Rump Mountain one has a commanding view of the surrounding country, such as the northern part of Oxford County, northern Franklin County on the East side. Looking to the north gives a direct view across the border into Canada. Looking to the west one gets a view of northern New Hampshire, taking in the Connecticut Lakes section.

Approach is by way of route 26 from Bethel, Newry to Errol, N. H. then route 16 to Wilson's Mills. Leave cars at Aziscoos Dam at Wilson's Mills. Take Parmachenee Club launch at Aziscoos Dam to the Club House, stay overnight at the Club House for \$5.00 per day per person. From the Parmachenee Club it is a 6 m. trip up the Magalloway River by boat or trail to Rump Pond Cabins where the mountain trail begins. The Rump Pond cabins is an outlying camp of the Parmachenee Club. From here to the mountain top is a good spotted trail.

## SABATTUS MOUNTAIN

*Latitude 44-11*

*Town—Lovell*

*Altitude 1,280*

*Longitude 70-50*

*County—Oxford*

*Base 376*

Fire Tower.

Length of Trail—0.5 mile.

Time required to ascend—30 min.

Time required to descend—20 min.

Approach is by way of route 118 and 5 from Norway. At Center Lovell turn left onto a dirt road. Drive 2.5 m. to the Harold Pratt farm. Cars may be left here. There is an old quarry at the base of the mountain. The ascent is a gentle climb. This offers a splendid opportunity for people who are not equal to a hard climb and to beginners. One of the most beautiful views in Maine is had from the top of this mountain. Beautiful Lake Kezar lies directly below and the range of the White Mountains is close at hand.

## SADDLEBACK MOUNTAIN

*Latitude 44-57*

*Town—Sandy River Plantation*

*Altitude 4,116*

*Longitude 70-31*

*County—Franklin*

*Base 1,520*

3 Trails.

Fire Look-out Tower.

Mount Saddleback is situated in the famous Rangeley Lake region. It is also situated within sight of some of Maine's highest mountains. Not very far away is Mount Bigelow, Sugar Loaf, Crocker, Abraham, all over 4,000 feet high. Seventeen other fire lookout stations can be seen from the one on Saddleback. Its scope covers about 200 mountain peaks, 8 lakes and numerous other small bodies of water. On a clear day even Mount Katahdin may be seen from the tower, as well as Mount Washington and the White Mountain ranges. One can see about 25 m. into New Hampshire and 10 m. into Canada. There is a small pond near the

top. There is a steep slope of about 1,000 foot drop east of the Tower. There have been three caves discovered in and about the mountain.

### Saddleback Lake Trail

Length of Trail—4.5 miles.

Time required to ascend—3 hrs. 30 min.

Time required to descend—2 hrs.

The approach is by route 4 from Farmington. Drive to within about 1 m. of Rangeley village and turn a sharp right onto a dirt road. Guide boards point to Saddleback Lake Camps. From this corner to Saddleback Lake Camps is 4.75 m. over a good dirt road. Plenty of parking space for cars. The trail starts near the camps and is marked by a sign reading "144 CCC Trail to Fire Station." The trail has been improved by the CCC boys and is in excellent condition. The brooks and streams are crossed by bridges made of logs and are very picturesque. The first 4 m. of the trail is very gradual. At the end of 4 m. is the watchman's camp and an excellent spring of water. The last 0.75 m. is very steep, although a very good trail. If one is interested in riding horses may be obtained at Saddleback Lake camps and ride to within 0.75 m. of the summit.

### Appalachian Trail

Approach is by way of route 4 from Farmington. 32 m. from Farmington on the right hand side of the road is the Appalachian Trail leading off to Mount Saddleback. From highway 4 it is 9.13 m. to the fire tower. The Appalachian Trail, however, comes near route 4 at a few miles down the highway towards Farmington. For one wishing to get to the top of Saddleback the quickest way over the Appalachian Trail this latter way would be shorter. There is an old wood road leading from highway 4 only about 0.3 m. distance from the Appalachian Trail. This crosses between 2nd and 3rd Sandy River ponds. This approach is indicated by a sign marked Piazza Rock about 3 m. from Madrid on right side of road. From this approach it is only about 5 m. to the summit. The Appalachian Trail whether picking up the trail from where it crosses the highway or by way of the Sandy River ponds is an interesting trip. There are caves with narrow passages affording excellent opportunities for exploration. Several ponds are passed. Piazza Rock is a novel feature.

## SCHOODIC MOUNTAIN

*Latitude 44-34*

*Town—T 9 S. D.*

*Altitude 1,069*

*Fire Tower.*

*Length of Trail—3.25 miles.*

*Time required to ascend—1 hr. 30 min.*

*Time required to descend—1 hr.*

*Longitude 68-9*

*County—Hancock*

*Base 120*

Approach is by route 1 from Ellsworth then 182 to Franklin. At Franklin turn right at Macombus Garage. Drive 2 m. on dirt road until you come to the fire look-out sign. Cars may be parked here. Water is very plentiful on the trail. The trail is marked by arrows and signs. After crossing the railroad tracks follow right of way on east side for about 200 yards, and then follow arrows to Watchman's Camp



where you will have no trouble in finding the trail to the top. From the tower there is an excellent view of Mount Desert Island, Frenchman's Bay and Mount Katahdin may also be seen on a clear day.

## SPECKLED MOUNTAIN

*Latitude 44-17*

*Town—Stonham & Mason*

*Altitude 2,877*

*Longitude 70-57*

*County—Oxford*

*Base 580*

Seven Trails, of which four are described.

Wooden fire look-out tower erected in 1935.

From easterly side, fine views from open ledges and table land overlooking Kezar Lake. From summit, views of Baldface range across Evans Notch, also of Carter and Presidential ranges.

### **Willard Brook Trail (short cut)**

Length of Trail—3 miles.

Time required—2 hrs.

Approach is by route 118 and route 5 from Norway. Turn to the right by the store at North Lovell, take next left and follow silver arrows to large clearing about 3 m. from North Lovell from which can be seen Evergreen Camp, large Swiss style chalet on side of mountain. Trail leads from northerly side of clearing and eventually goes into Willard Brook Trail. Good trail and steady climbing after first 0.5 m. Last water near table land indicated by rock sign on ledge at right of path.

Trails from Evans Notch.

### **Bickford Brook Trail**

Length of Trail—4.1 miles.

Time required—3 hrs. 15 min.

Leaves Evans Notch road at Brickett guard station at southerly end of road, going to the east.

### **Blueberry Ridge Trail**

Length of Trail—4.5 miles.

Time required—3 hrs. 30 min.

Leaves Bickford Brook Trail at a sign at 0.65 m.

### **Speckled Mountain Trail**

Length of Trail—3 miles.

Time required 2 hrs. 15 min.

Take Haystack Notch Trail which leaves Evans Notch Road about 2.5 m. south of Hastings. Fork right at 0.6 m.

## SNOW MOUNTAIN

*Latitude 45-17*

*Towns—Alder Stream*

*Seven Ponds, Chain of Ponds*

*Altitude 3,948*

*Longitude 70-42*

*County—Franklin*

*Base 1,273*

Two Trails.

Fire Tower.

It is reported that Snow Mountain received its name from a man named Snow who logged this section many years ago.

## Morrill Trail

Length of Trail—7 miles from highway to base of mountain, 2 miles from base of mountain to summit.

Time required to ascend from base of mountain to summit—1 hr. 30 min.

Time required to descend—45 min.

Approach is by way of route 4 from Farmington through Rangeley, Stratton and Eustis or by route 27 from Kingfield to Stratton and route 4 through Eustis. Drive car along route 4, 12 m. from Eustis. Leave route 4 to the left at Chain of Ponds Camps sign. Drive your car down to the garage on the east shore of lake. Telephone here to Chain of Ponds camps on the other side of the lake for information for crossing the lake. The steward at the camps will give information regarding the start of the trail to the mountain. The first 2 m. of the trail are smooth but grassy. Water-proof shoes needed in the early morning and damp weather. During the middle of the day trail is dry. The remainder of the trail to the base of the mountain is smooth and in good condition. There are several nice springs along the trail at intervals. At the base of the mountain is Big Island Pond and a set of camps here. These belong to a private club. The trail from here to the top is smooth and leads through a growth of large spruce mingled with some hardwood. There are three springs along the last 2 m. of the trail. About 0.125 m. from the base and 75 or 100 yards from the trail there are some natural caverns in the big ledges. At the summit of the mountain is a big ledge on which the tower stands. On the south slope there is a sharp drop-off, too sharp to negotiate.

## Trail No. 2

Length of Trail—5 to 6 miles.

Time required to ascend—3 to 4 hrs.

Time required to descend—2 to 3 hrs.

There is another trail that may be taken to Snow Mountain. Go on route 4 from Eustis about 4 m. and turn left at Round Mountain sign. Drive your car into Round Mountain Lake Camps, a distance of 7 or 8 m. The road is generally good except in the month of May and a part of June when it is difficult because of spring washouts. Cars may be left at Round Mountain Lake Camps, then follow trail to the tower. This is a harder trail to travel but some make the trip this way in preference to the other.

## OLD SPECK

*Latitude 44-70*

*Town—Grafton*

*Altitude 4,250*

*Longitude 70-56*

*County—Oxford*

*Base 1,500*

## Maine Forestry Service Trail

Length of Trail—1.55 miles.

Time required to ascend—2 hrs. 30 min.

Time required to descend—1 hr. 45 min.

Approach is by way of route 26 from Newry Corner to Errol, N. H. From Newry drive 12 m. on black road to Maine Forestry Service sign on the left hand side of the road, opposite a State camp site. From the highway the trail begins at a steep angle which it maintains about half

way to the cabin. Then, the grade decreases until the cabin is reached. Above the cabin however there is no let up, it is a steep climb to the top. The trail to the cabin is of dirt and from the cabin on it is rocky. At the cabin there is a side trail known as the East Spur Trail, leading to the open ledges which can be followed to the summit. This is about 0.5 m. longer than the Maine Forestry Service Trail. There is a dependable water supply at the base of the mountain and the last sure water on the trail is at the cabin. Along the ledge of the East Spur Trail there is a rock formation very properly named Tri-Boulder Cave. It consists of a large rock which rests on two others and forms a cave of quite sizable dimension. There are some very picturesque waterfalls along the brook on the left of the trail as one ascends. These are most attractive just after a heavy rain fall. All along the trail are mica and quartz formations and near the summit one can find very good specimens of smoky quartz. Behind the summit lies Speck Pond, the highest body of water in Maine (3500 feet). This pond is on the Appalachian Trail to Gorham, N. H. and is about 1.5 m. behind the summit of Old Speck. To go down and back requires about 2 hrs. and 30 min. but one is well repaid for the effort by a glimpse at this remote and restful bit of scenery.

## SUGARLOAF MOUNTAIN

*Latitude 45-2*  
*Town—Crocker*  
*Altitude 4,237*

*Longitude 70-19*  
*County—Franklin*  
*Base 1,306*

Maine's second highest mountain.  
Length of Trail—5 miles.  
Time required to ascend—3 to 4 hrs.  
Time required to descend—2 to 3 hrs.

### Appalachian Trail

Approach is by way of route 27 from Kingfield. Cars may be left at the little settlement of Bigelow. Trail leads off to the left at a large Appalachian Trail sign. Follow the Appalachian white blazes to the summit. The first 2 or 3 m. is fairly level. After about 3 m. you think you are coming to the top, but when you come out into the open you have a big surprise because the peak and the hardest part of the climb is still before you. You need waterproof shoes for the most part of the season. Parts of the trail are a trifle wet. There is no drinking water after you leave the base of the mountain. On page 105 of the Guide to the Appalachian Trail in Maine we find the following "This section of the trail traverses two of the finest mountains along the entire trail route. From Bigelow village the trail ascends gradually to the perfectly symmetrical, bare cone of Mount Sugarloaf—beyond the trail descends through dense conifers some 700 feet and then crosses Spaulding Mountain, (3988 feet) from Spaulding Mountain the trail descends to the sag (3184 feet) at the base of Mount Abraham."



## MOUNT TUMBLEDOWN

*Latitude 44-45*

*Town—T 6*

*Altitude 3,035*

*Longitude 70-33*

*County—Franklin*

*Base 900*

Length of Trail—2 miles.

Time required to ascend—2 hrs.

Time required to descend—1 hr.

The approach is by way of Weld, route 156 from Wilton. 156 stops at center of village, go straight through village picking up route 142. At 1.5 m. from the village turn left at the Grange Hall onto a dirt road. Keep right for about 2 m. then turn right into a wood road, driving about 0.75 m. Car may be left at camps. A 2 m. trail starts here leading over Mount Parkhurst (or Parkus). Tumbledown itself is a three peak mountain. The peaks are about of equal height and arranged somewhat like a clover leaf with shallow ravines between. Near the summit is a good size lake. The entire top is of rock formation and very few trees. Very many interesting rock formations may be observed. The view is beautiful. There are stupendous overhanging cliffs and an interesting cave which may be entered with some difficulty. Looking back from the last peak of Tumbledown there is a beautiful profile of George Washington striking out over the side of the mountain. The trail is good and the climb is fairly easy a good part of the way, although there are some places of real steep climbing.

## WADLEIGH MOUNTAIN

*Latitude 45-29*

*Town—T 1 R 12*

*Altitude 1,000*

*Longitude 69-12*

*County—Piscataquis*

*Base*

Length of Trail—6 miles.

Time required to ascend—3 hrs.

Time required to descend—2 hrs. 30 min.

Approach is by way of route 15 from Greenville to Kokadjo. Leaving Kokadjo take right turn on second Roach Road or Cooper Brook Road. This is a dirt road, but passable. Trail starts 1.3 m. from Kokadjo from the left hand side of the road at trail look-out sign. Plenty of room for parking cars at the start of the trail. Follow the telephone line to the watchman's camp, 5.5 m. from the road. At one place on the trail there is a beaver dam across, but a nice path around it. 3 m. in on the trail is an old logging camp, follow the telephone line through the camp yard and here is where you start to climb. This is Penobscot Ridge and not the mountain. Drinking water may be found in back of the first of the logging camps. There is also water at the watchman's camp. Although this is not a high mountain it is in the wilder section of the state and very interesting for those looking for wild life. The mountain is pretty nearly surrounded by ponds and it is a common sight to see moose feeding in these ponds. One summer a baby moose stayed around the watchman's camp all summer. There is also plenty of other game to be seen in this region including fox, deer, and other wild life. It is a good view from the top and interesting rock formation.





# ALPHABETICAL LIST

## of the

### MAINE PEAKS BEARING NAMES

The list of elevations in Maine is based principally on data from U. S. Geological Survey quadrangle maps, supplemented by data on nomenclature, height, base, or location from several other sources.

The following abbreviations indicate the source from which principal primary or secondary information not available on other maps was obtained:

MFS—A list of fire tower locations from the 21st biennial report of the Maine Forest Commissioner, 1935-36.

RLR—Map of the Rangeley Lakes Region published in 1937 by M. C. Linscott of Hallowell, Maine. Obtainable from Publicity Bureau, Rangeley, Maine.

AMC—Appalachian Mountain Club "White Mountain Guide," 1934 edition, maps entitled "Mahoosuc Sheet, No. 8," delineated by Louis F. Cutter, and "Andover, Maine, Sheet, No. 9," delineator's name not stated.

JHS—Atlas of the State of Maine, published by J. H. Stuart & Co., South Paris, Maine, 12th edition, 1902-03.

CH—Atlas of Oxford County, Maine, published by Caldwell & Halfpenny, 21 South 6th St., Philadelphia, 1880. "Compiled and drawn from actual surveys by H. E. Halfpenny and John W. Caldwell." "John W. Caldwell, Sherman Mills, Maine."

RC—Atlas of Aroostook County, Maine, published by Roe & Colby, 27 South 6th St., Philadelphia, 1877.

CSC—Atlas of Penobscot County, Maine, published by Comstock C. Cline, 27 Warren St., New York, 1875. "From recent actual surveys and records under the superintendence of W. A. Sherman."

GNC—Atlas of Piscataquis County, Maine. "Compiled and drawn from official plans and actual surveys by George N. Colby & Co., Houlton and Dover, Maine, 1882." Also Somerset Co., George N. Colby & Co., Houlton and Skowhegan 1883.

NSC—Map of Maine published by the National Survey Co. of Chester, Vt. It should be noted here this map contains several names which can be interpreted only as inclusions to protect copyright. These include "Ocevustan" mountain in Township "C," Oxford county which reversed, spells "Nat. Suve. Co."; "Morfnelots" mountain in Township "C," Oxford county which, reversed, spells "Stolen from"; and similar transpositions in Township 6 Range 16, Somerset Co. No special examination of this company's map was made for other name reversals or unauthentic nomenclature.

ATM—The following maps from the Appalachian Trail Conference publication No. 4, third edition, 1938, "Guide to the Appalachian Trail in Maine"; obtainable from Appalachian Trail Conference, 901 Union Trust Bldg., Washington, D. C.

a—The Appalachian Trail, Katahdin to Maine Highway 4 (Mt. Saddleback), Mark Taylor delineator, based on county maps by Prentiss & Carlisle, Inc., Bangor, Maine.



b—The Appalachian Trail, Katahdin to East Branch, Pleasant River, delineator E. G. Despres, based on map prepared by Julian R. Speyers.

c—The Appalachian Trail, The Whitecap Region, East Branch to West Branch of Pleasant River, delineated by Conger, based on maps prepared by Prentiss & Carlisle, Inc., Bangor, Maine.

d—The Appalachian Trail, The Barren-Chairback Range, traced by H. W. Wibert. Control by U. S. Geological Survey, levels by U. S. Coast and Geodetic Survey, bases compiled by S. S. Philbrick from U. S. Army Air Corps photographs 1932, topography by S. S. Philbrick 1931 and H. E. Stocking 1932.

e—The Appalachian Trail, Bodfish Siding to Moxie Pond, E. P. Schreier delineator, region west of Piscataquis River based on Prentiss & Carlisle Co. maps of Piscataquis and Somerset counties; region east of Piscataquis River based on map by Shailer S. Philbrick.

f—The Appalachian Trail, Trails of Mt. Bigelow Range, map by H. C. Atkiss.

g—The Appalachian Trail, Maine Highway 4 to Maine-New Hampshire line, delineator K. S. Boardman, based on Maine Forest Service Rangeley District map as revised by Bates College Outing Club, October 1935.

Reference also was made to maps in "The Maine Woods" published by the Bangor & Aroostook Railroad.

Included in the list are all elevations which appear as "mountains" or "mounts" on the maps examined, regardless of height. Also included are numerous elevations mapped as "hills," some because they have names the same as, or similar to, those of mountains; others because of their height.

The compiler has proceeded in the belief the list may be used widely for comparison of elevations by residents of different localities and therefore has listed many which otherwise would have been omitted.

It will be noted a large number of peaks are not measured definitely beyond a 20 foot contour interval, resulting in many duplications of height. That is, unless the actual height has been determined and printed on the map, it will appear at the nearest 20 foot interval. All those listed as 2,020 feet, for example, might be any height between that figure and 2,040 feet. The same situation holds true in many instances for data on bases.

Not included in the list are scores of peaks as yet unnamed, though many are in the 2,000 foot, or even the 3,000 foot class.

The compiler has seen fit to include, with accompanying question marks, several peaks named in a prior partial compilation, of which no information as to location or height could be obtained.

Since no list of Maine mountains has been published previously, and since it is inevitable there will be errors to correct as well as omissions to fill, the cooperation of all interested is asked in an effort to bring it to perfection.

Any information on names, locations, height of summit or base, should be forwarded to Maine Development Commission, State House, Augusta, Maine.

The following symbols are used to denote:



Maine Forest Service fire tower.



Peak traversed by the Appalachian Trail, white blazes.



Reached by side trail from the Appalachian Trail blue blazes.



Peak in White Mountain National Forest.

### B-C-R Barren Chairback Range.

This list of mountains was compiled by Stanley B. Attwood, Auburn, Maine, founder of the Maine Alpine Club.

Name	Town and County	ELEVATION		Height of Climb
		Summit	Base	
Abol	3 R 9, Piscataquis	2306	593	1713
Aborn Hill	Knox, Waldo	1001	320	781
○ Abraham	Mt. Abraham, Franklin	4049	1160	2809
▲ Abram, Mt.	Greenwood, Oxford	1960	763	1197
Acadia	Mt. Desert, Hancock	680	0	680
■ Adams	Stoncham, Oxford	1600	550	1050
Aetna, Mt.	Machiasport, Washington	180	0	180
▲ Agamenticus	York, York	692	80	612
■ Albany	Albany, Oxford	1900	681	1219
Alder Stream JHS	Stetson, 3 R 4, Franklin			
▲ Allagash Mts. MFS	7 R 14, Piscataquis			
Allen	Denmark, Oxford	1100	504	596
Allen	Peru, Oxford	1560	500	1060
Allen	Stoneham, Oxford	1220	584	636
Allen Hill	Peru, Oxford	1300	400	900
Almanac	Lakeville Pl., Penobscot	1052	299	753
■ Ames AMC	Stoneham, Oxford	2720	1422	1298
Amos	Lovell, Oxford	920	376	544
Antler Hill	Jim Pond, 1R5, Franklin	2675	1229	1446
Apatite, Mt.	Auburn, Androscoggin	500	239	261
▲ Ararat, Mt.	Topsham, Sagadahoc	255	0	255
Aroostook Mts. JHS	10 R 8, Aroostook			
Asticou	Acad. Natl. Park, Hancock	460	0	460
Attean	Attean, Somerset	2442	1157	1285
Aunt Hepsey Brown's CH (See Brown)				
▲ Aziscoos, Aziscohos	Lincoln Pl., 5R2, Oxford	3215	1246	1969
Babbitt Ridge	Moscow, Somerset	1468	500	968
Bad	Albany, Oxford	1300	680	620
Bagley	Lincoln, Penobscot	880	180	700
Bag Pond	Chain of Ponds, 2R6, Franklin	3144	1273	1871
Baker	Moscow, Somerset	760	360	400
○ Baker ATM	Gore A-2, Piscataquis	3589	1600	1989
Bald	Amherst, Hancock	720	180	540
● Bald, Moxie Bald	Bald Mt., Somerset	2630	1300	1330
Bald	Baring, Washington	400	140	260
Bald Boundary	Bald Mt., 4 R 3	3000	1588	1412
Bald	Camden, Knox	1272	139	1123
Bald	Clifton, Penobscot			
Bald	Dedham, Hancock	1261	236	1025
Bald	Highland Pl., Somerset	1880	500	1380
Bald	Isle au Haut, Knox	140	0	140
Bald AMC	Newry, Oxford			
Bald	Perkins Pl., Franklin	2572	780	1792
Bald RLR	Rangeley, Franklin	2200	1467	733
Bald	Tremont, Hancock	240	0	240

Name	Town and County	ELEVATION		Height of Climb
		Summit	Base	
Bald	Woodstock, Oxford	1660	855	805
Bald (See Washington Bald)	Township 42, Washington			
Bald	D R 2, Aroostook			
Bald	4 R 10, Piscataquis	2820	1800	1020
Bald	6 R 8, Penobscot			
Bald	12 R 8, Aroostook	1540	880	660
Bald Bluff	Amherst, Hancock	1011	220	791
Bald Bluff	Arrowsic, Sagadahoc	100	0	100
Bald Head	Cornish, York	1000	460	540
Bald Knob (See Hedgehog)	11 R 4, Aroostook			
● Baldpate, E. or N. Peak AMC	Grafton, Oxford	4080	1500	2580
● Baldpate, W. or S. Peak AMC	Grafton, Oxford	3930	1500	2430
Bald Pate	Bridgeon, Cumberland	1160	480	680
Bald Pate	3 R 4, Franklin	2880	1782	1098
Bald Peak	Fryeburg, Oxford	800	460	340
Bald Rock	Lincolnton, Waldo	1100	0	1100
Bannock	Industry, Franklin	1230	565	665
Barker; Barkers CH	Newry, Oxford	2582	656	1926
Barkers High Ledge	Rumford, Oxford	1000	620	380
Barnard	3 R 8, Penobscot	1616	988	618
● Barren ATM	Elliottsville Pl., Piscataquis	2670	550	2120
Barren	3 R 10, Piscataquis	3681	1040	2641
Bartlett, or Howard	Hanover, Oxford	1460	640	820
Bartlett	10 R 9, Piscataquis	1400	860	540
Barton Hill	Anson, Somerset	1260	500	760
Basin	Pierce Pond, Somerset	2361	940	1421
Bates Ridge	Carrying Place, Somerset	1980	1142	838
Bates Ridge	Linneus, Aroostook	1240	484	756
Battie	Camden, Knox	800	0	800
Battux	Rockland, Knox	620	123	497
Bauneg Beg	North Berwick, York	840	200	640
● Baxter Peak (See Katahdin)	3 R 9, Piscataquis			
Beach JHS	Township 7, Hancock			
Bean	Avon, Franklin	1240	493	747
Bean CH (Howard?)	Hanover, Oxford			
Bean	Milton Pl., Oxford	1880	800	1080
Bean AMC	Newry, Oxford			
Bean Brook	Parlin Pond, Somerset	2620	1600	1020
Bean Hole	3 R 10, Piscataquis			
Bear	Fairfield, Somerset	602	200	402
▲ Bear	Hartford, Oxford	1207	380	827
Bear, or Green AMC	Riley, Oxford	3300	660	2640
Bear	Waterford, Oxford	1065	375	690
Bear	Township 3, Penobscot	740	300	440
Bear	Lakeville, 4 R 1, Penobscot	740	304	436
Bear	3 R 5, Somerset	2375	1091	1284
Bear Hill	Phillips, Franklin	1320	760	560
Bear River Whitecap JHS (See Baldpate)	Grafton, Oxford			
Beaver	Rangeley Pl., 3R1, Franklin	3160	1729	1431
Beech	Southwest Harbor, Hancock	855	0	855
Beech Hill	Pittston, Kennebec	543	82	461
Beech Hill	Waterford, Oxford	1520	90	930
▲ Beetle MFS	7 R 10, Piscataquis			
■ Bell	Albany, Oxford	1380	620	760
Bell Hill	Otisfield, Cumberland	858	325	533



Name	Town and County	ELEVATION		Height of Climb
		Summit	Base	
Bells .....	Edmunds, Washington .....	220	0	220
○ Bemis .....	Township D, Franklin .....	2923	1464	1459
○ Benson ATM .....	7 R 9, Piscataquis .....	2050	600	1450
Bernard .....	Southwest Harbor, Hancock .....	1073	0	1073
Big .....	Swan Island, Hancock .....	221	0	221
Big Brawn .....	7 R 4, Aroostook .....	1051	780	271
Big Buck .....	Parkertown, 5 R 3, Oxford .....	2217	1517	700
●▲ Bigelow, Mt. ....	Dead River Pl., Somerset .....	4150	1122	3028
Big Hill .....	Bedham, Hancock .....	1090	156	934
○ Big Spruce .....	Bowdoin College Grant, Piscataquis.			
Big Tunk JHS (See Tunk)				
Billfish .....	6 R 8, Penobscot .....			
Billings Hill .....	Woodstock, Oxford .....	1780	844	936
Bill Merrill .....	Hiram, Oxford .....	1580	400	1180
Birch .....	Charlotte, Washington .....	502	76	426
Birch .....	Guilford, Piscataquis .....	980	364	616
Birch Hill .....	Albany, Oxford .....	1200	560	640
Birch Hill .....	Fryeburg, Oxford .....	760	379	361
Birds Hill .....	Bethel, Oxford .....	1440	700	740
Bishop .....	13 R 8, Aroostook .....	1320	769	551
Black .....	Riley, Oxford .....	2940	760	2180
Black .....	Rumford, Oxford .....	2355	940	1415
Black .....	Sumner, Oxford .....	2200	563	1637
Black .....	Sweden, Oxford .....	980	418	562
Black .....	Township 10, Hancock .....	1049	120	929
Black .....	2 R 4, Franklin .....	3034	1700	1334
Black .....	15 R 9, Aroostook .....	1901	1128	773
Black Brook .....	5 R 9, Piscataquis .....			
Blackcap .....	Eddington, Penobscot .....	900	200	700
Blackcap .....	Township 28, Hancock .....	930	453	477
Black Cap .....	Plantation 33, Hancock .....	921	279	642
Blackcat .....	Davis, 3 R 3, Franklin .....	2620	1480	1140
Black Cat .....	Poland, Androscoggin .....	860	305	555
Black Cat .....	1 R 9, Piscataquis .....			
Black Hill .....	Emblen, Somerset .....	1320	400	920
Black Hills JHS (See Black)	Township 10, Hancock .....			
Black Nubble .....	Bowton, Somerset .....	1780	500	1280
Black Nubble .....	Caratunk, Somerset .....	2100	1100	1000
Black Nubble .....	Kingfield, Franklin .....	2853	1100	1753
Black Nubble .....	Redington, Franklin .....	3670	1480	2190
Black Nubble .....	Squaretown, Somerset .....	1620	1060	560
Black Pinnacle ATM .....	A R 12, Piscataquis .....			
▲ Black Strap Hill .....	Falmouth, Cumberland .....	505	185	320
Blackwood .....	Township 7, Hancock .....	643	208	435
Blanchard .....	3 R 4, Somerset .....	2225	1020	1205
▲ Blue, Mt. ....	Avon, Franklin .....	3187	1160	2027
Blueberry .....	Berlin No. 6, Franklin .....	2942	960	1982
Blueberry .....	Stoneham, Oxford .....	1820	580	1240
Blue Hill .....	Bluehill, Hancock .....	940	0	940
Blue Ridge .....	Taunton and Raynham, Somerset .....	1877	1028	849
Bluff C'H (See Whittemore Bluff)	Dixfield, Oxford .....			
● Boar JHS (See Boarstone)	Elliottsville Pl., Piscataquis .....			
Boardman .....	Industry, Franklin .....	1458	520	938
● Boardman ATM .....	A R 11, Piscataquis .....			
●▲ Boarstone (Boarstone) B-C-R, ATM	Elliottsville Pl., Piscataquis .....	1850	550	1300

Name	Town and County	ELEVATION		Height of Climb
		Summit	Base	
Boat Landing	18 R 12, Aroostook	1160	640	520
Bog	Township 10, Hancock	500	160	340
Boil	Seven Ponds, 3R5, Franklin	3620	1700	1920
Bosebuck	Lynchtown, 5 R 4, Oxford	3149	1519	1630
Bossy	Fort Kent, Aroostook	1480	540	940
Bottle	Oxbow, 4 R 5, Oxford	3015	1820	1195
▲ Boundary Bald (See Bald)	4 R 3, Somerset			
Bowdoin GNC	A 12, Piscataquis	1180	420	760
Bowers	Carroll, Penobscot	2760	1885	875
Bowman Hill	Bowman, Oxford			
Bradbury	Pownal, Cumberland	484	120	364
Breakneck	Alexander, Washington	660	232	328
Breakneck	Township 31, Washington			
● Breakneck Ridge ATM	Blanchard, Piscataquis			
Brewers	Bar Harbor, Hancock	462	0	462
Brimstone	Township D, Franklin	2365	1178	1187
Brown	Dixfield, Oxford	1820	800	1020
Brown Hill	Carroll, Penobscot	1140	640	500
Browns	Mt. Desert, Hancock	880	0	880
Brown's	Hartford, Oxford	1380	571	809
Browns Hill	Albany, Oxford	1220	650	570
Brown's Ledge	Albany, Oxford	1220	720	500
Brown's Peak	Wilton, Franklin	1600	658	942
Brush	Byron, Oxford	270	780	1925
Bryant	Milton Pl., Oxford	1760	640	1120
Bubble, The	Acad. Natl. Park, Hancock	845	195	651
Bucks Ledge	Woodstock, Oxford	1300	719	580
Buker	Guilford, Piscataquis	1040	364	676
Bull	Upper Cupsuptic, 4 R 4, Oxford	3110	1820	1290
Bull Hill	Charleston, Penobscot	940	280	660
Bull Hill	Township 16, Hancock	616	180	436
Bull Hill	12 R 8, Aroostook	1600	840	760
Bull Ridge	Hammond, Aroostook	1121	635	486
Bunker	Roxbury, Oxford	1580	580	1000
Burgess Hill	Peru, Oxford	1701	480	1221
Burnell Hill	Waterford, Oxford	1380	571	809
Burnt	Lower Cupsuptic, 4 R 3, Oxford	2940	1500	1440
Burnt	Tremont, Hancock	140	0	140
▲ Burnt NSC	5 R 10, Piscataquis			
Burnt	Holeb, Somerset			
Burnt Hill	Crockerstown, Franklin	3595	1254	2341
Burnt Hill, Burnt CH	Dixfield, Oxford	1300	392	908
Burnt Hill	Flagstaff, Somerset	2102	1243	859
Burnt Hill	Highland Pl., Somerset	2241	1000	1241
Burnt Jacket	Dennistown, Somerset	2241	1173	1068
Burnt Jacket JHS	Gore A-2, Piscataquis			
Burnt Meadow Mtns. (See Stone)	Brownfield, Oxford	1580	372	1208
Burnt Nubble	Squaretown, Somerset	1780	1300	480
■ Butters	Stoneham, Oxford	2260	610	1650
Byron	Linneus, Aroostook	980	580	400
Cadillac	Bar Harbor, Hancock	1532	0	1532
Camera Hill	4 R 5, Somerset	2068	1300	768
Campbell	Riley, Oxford	2880	660	2220
Canton	Canton, Oxford	1542	720	822
■ Caribou	Mason, Oxford	2828	795	2033

Name	Town and County	ELEVATION		Height of Climb
		Summit	Base	
Caribou	2 R 7, Franklin	3600	2140	1460
Caribou	Township 10, Hancock	954	120	834
Carlo AMC	Riley, Oxford	3520	1240	2280
Carlyle	Robbinston, Washington	560	76	484
Carr	Mexico, Oxford	1500	496	1004
▲ Carr Pond	13 R 8, Aroostook	1390	769	621
Carrying Place (?) 45-11N, 70-8 W	Carrying Place, Somerset	1900	1120	780
Caswell	Lowelltown, 1R8, Franklin	2305	1402	903
Caswell	New Vineyard, Franklin	2000	609	1391
Cates Hill	Caratunk, Somerset	1600	451	1149
Catheart	4 R 7, Somerset	2360	1200	1160
Catherine	Township 10, Hancock	942	187	755
Cave CH 44-39 N, 70-33 W	Roxbury, Oxford USGS	1960	1020	940
C Bluff AMC, C Pond Bluff ATM	C Surplus AMC, "C" ATM, Oxf.			
Cecil	Stoneham, Oxford	1140	471	669
Cedar	Parsonsfield, York	1220	480	740
Cedar ATM	B R 10, Piscataquis			
Center	5 R 10, Piscataquis			
Center	10 R 8, Aroostook	1664	980	684
Centre GNC	Flagstaff Pl., Somerset			
● Chairback, B-C-R, ATM	7 R 9, Piscataquis	2150	650	1500
Chamberlain	Milton Pl., Oxford	2034	681	1353
Champlain	Bar Harbor, Hancock	1060	0	1060
Chandler	Chapman, Aroostook	1020	520	500
Chapman	Baileyville, Washington	500	160	340
Chase	Dedham, Hancock	820	223	597
▲ Chase Mt., MFS JHS	Mt. Chase, 6 R 6, Penobscot			
Chase, Mt. JHS	5 R 6, Penobscot			
▲ Chase Hill	Canaan, Somerset	780	289	491
Cherry Hill	Perkins Pl., Franklin	1826	600	1226
Cherry Tree JHS ( Washington Bald?)	Township 42, Washington			
Chimes, The	4 R 5, Somerset	1900	1560	340
Christopher	Greenwood, Oxford	1180	684	496
Clark	Cornish, York	1320	548	772
Clark	Greene, Androscoggin	707	338	369
Clay Brook	Jerusalem, Franklin	2285	720	1565
▲ Clear Lake	10 R 11, Piscataquis	1855	1196	659
Clear Pond	Lowelltown, 1 R 8, Franklin	2510	1500	1010
Cloutman Ridge	Rangeley, Franklin	1740	1470	270
Cobble Hill	Paris, Oxford	1120	460	660
Coburn	Upper Enchanted, 3R6, Somerset	3718	1934	1784
Coe	3 R 10, Piscataquis	3782	1200	2582
Cold	Grand Isle, Aroostook	1020	581	439
Coldstream	Coldstream, Somerset	2280	1188	1092
Cold Stream	2 R 6, Somerset	2140	1100	1040
Colonel Holman	Dixfield, Oxford	1800	582	1218
● Columbus, B-C-R, ATM	7 R 9, Piscataquis	2400	750	1650
Coon	Liberty, Waldo	840	306	534
▲ Cooper MFS NSC	Cooper, Washington			
Cooper Ridge ATM	A R 11, Piscataquis			
Cow	Caratunk, Somerset	2020	1100	920
Cow Hill	Jay, Franklin	1040	460	580
Cow Ridge	3 R 4, Franklin	3645	1880	1765
○ Cranberry Peak	4 R 3, Franklin	3213	1160	2053
Crane	Edmunds, Washington	300	0	300



Name	Town and County	ELEVATION		Height of Climb
		Summit	Base	
Crocker	Crockertown, 4 R 2, Franklin	4168	1219	2949
Crocker Hill	Paris, Oxford	1400	700	700
Crockett	Temple, Franklin	1653	667	986
Croxford	Monroe, Waldo	601	360	241
Crummett	Somerville, Lincoln	540	220	320
Calcusse	5 R 16, Somerset			
Cummings	Albany, Oxford	1500	780	720
Cummings Hill	Bethel, Oxford	1140	680	460
Cunningham	Edmunds, Washington	140	0	140
Cupsuptic	Upper Cupsuptic, 4 R 4, Oxford	2660	1520	1140
Curtis Hill	Woodstock, Oxford	1475	641	834
Cushman Hill	Sumner, Oxford	1160	480	680
Cutler; Cutler, Mt., CH	Hiram, Oxford	1180	380	800
Cyr	Madawaska, Aroostook	1160	780	380
Daddy's Ridge (See Lower Cupsuptic)	Lower Cupsuptic, Oxford			
▲ Daicey MFS	3 R 7, Penobscot			
Damon Hill	Sumner, Oxford	1160	460	700
Davis	Milton Pl., Oxford	1800	544	956
Day	Avon, Franklin	2040	1200	840
Day	Mt. Desert, Hancock	610	0	610
Day's Ridge	Bethel, Oxford	1380	680	700
Dead River	Bowtown, Somerset	2000	660	1340
Dean	Temple, Franklin	1820	755	1065
Deasey NSC (See Daicey)	3 R 7, Penobscot			
▲ DeBoullie	15 R 9, Aroostook	1981	1128	853
▲ Dedham Bald, See Bald, Dedham	Dedham, Hancock			
▲ Deer	Parkertown, 5 R 3, Oxford	3455	1467	1988
Deer Hill	Stow, Oxford	1220	440	780
Delight Ridge	Dyer Brook, Aroostook	1003	560	443
▲ Depot MFS	14 R 16, Aroostook	1300		
Derby	Temple, Franklin	1909	755	1154
Derry	Lincolntown, Waldo	760	0	760
▲ Dill Ridge	Lakeville Pl., Penobscot	948	298	650
Dimmick	Spaulding, Somerset	1876	1100	776
Dimmock, Mt.	Hanover, Oxford	1781	628	1153
Dixon	Pierce Pond, Somerset	1680	1142	538
Dodge	Rockland, Knox	660	123	537
Dog	Mt. Desert, Hancock	670	0	670
Dolly	Byron, Oxford	2700	1060	1640
Dome	Beattie, 2 R 8, Franklin	2320	1818	502
▲ Doubletop, Double Top JHS	3R10, Piscat. JHS 3R11 MFS	3600	1200	2400
Douglas Hill	Sebago, Cumberland	1407	262	1245
Dry	Bar Harbor, Hancock	1268	0	1268
Duck	Township 4, Hancock	1169	357	812
Ducktrap	Lincolntown, Waldo	740	0	740
Dunham Hill	Byron, Oxford	1920	900	1020
■ Durgin	Stoneham, Mason, Oxford	2280	600	1680
Eagle	Township 34, Hancock	1079	465	614
Eagle C. & C.	Clifton, Penobscot			
Eagle GNC	Middlesex Canal Grant, Piscataquis			
East Peak (See Mansell Peak)	Southwest Harbor, Hancock			
East Kennebago	2 R 4, Franklin	3825	1300	2525
Eastman Hill	Paris, Oxford	1300	500	800
East Nubble	Bigelow Pl., Somerset	2442	1140	1302
● East Peak, Mt. Bigelow ATM	Dead River Pl., Somerset	4088	1122	2966

Name	Town and County	ELEVATION		Height of Climb
		Summit	Base	
East Royce	Batchelders Grant, Oxford	3133	960	2173
East Turner	3 R 8, Penobscot	2441	740	1701
Eaton	Skowhegan, Somerset	740	165	575
Elbeeme JHS, GNC	5 R 9, Piscataquis			
Elbow	10 R 10, Piscataquis	1580	1040	540
Elephant	Township C, Oxford	3900		
Elephant, ATM	Bowdoin Col. Grant, Piscataquis			
Elephant's Head (See Black)	West Eustis, 2 R 4, Franklin	2840	1700	1140
Elizabeth	Stoneham, Oxford	2040	500	1540
Ellingwood	Bethel, Oxford	1580	660	920
Elliott JHS	Wellington, Piscataquis			
Elliotts	Calais, Washington	302	0	302
Ellis CH, JHS (Blueberry?)	Stoneham, Oxford			
Elwell	Greenwood, Oxford	1620	763	857
Emery Hill	Aibany, Oxford	1140	650	490
Emery's Misery	Lincoln Pl., Oxford	2117	1500	617
Ephraim, Mt. CH	Gilead, Oxford			
Ephraim, Mt.	Searsport, Waldo	720	200	520
Ephraim Ridge	Rangeley, Franklin	2705	1480	1225
Estey	Whiting, Washington	280	0	280
Eustis	Prospect, Waldo	540	0	540
Eustis Ridge	Eustis, Franklin	2040	1166	874
Farmer	Mt. Abraham, Franklin	3201	1300	1901
Farm Hill	Jim Pond, 1 R 5, Franklin	2254	1380	974
Farmers Hill	Andover, Oxford	1710	640	1070
Farrar ATM	1 R 12, Piscataquis			
Farrington	Mexico, Oxford	1040	464	576
Farwell	Albany, Oxford	1740	829	911
Farwell	Bethel, Oxford	1860	640	1220
Female ATM JHS	1 R 12, Piscataquis			
Ferguson	14 R 7, Aroostook	1000	640	360
Fessenden Hill	Denmark, Oxford	1020	504	576
Field's Hill	Sumner, Oxford	1140	400	740
Fifth Lake	Township 41, Hancock	912	380	532
Fire Tower	Lakeville Pl., Penobscot	948	470	478
Fiery	Franklin, Hancock	553	120	433
Fish Hill	Canton, Oxford	1120	380	740
Fitch Hill	Bridgton, Cumberland	1143	440	703
Fitz	Dedham, Hancock	605	223	382
Flag Hill	Orland, Hancock	952	35	917
▲ Flagstaff	3 R 4, Somerset	2497	1130	1367
Flathead	Roxbury, Oxford	2141	720	1421
Fletcher	Concord, Somerset	1700	560	1140
Fletcher Peak, JHS	Township 42, Washington			
Flints	Albany, Oxford	1320	580	740
Flints	Baldwin, Cumberland	900	356	544
Flying	Southwest Harbor, Hancock	280	0	280
Flying Moose	Orland, Hancock	916	100	816
Flying Squadron, The	Bar Harbor, Hancock	1268	0	1268
Fogelin Hill	New Sweden, Aroostook	1012	600	412
Fort	4 R 10, Piscataquis	3861	2820	1041
Fort Hill	Gorham, Cumberland	320	100	220
Fort Ridge	Shapleigh, York	1124	440	684
Foster Hill	Stoneham, Oxford	1160	502	658
Four Ponds	Rangeley Pl., 3 R 1, Franklin	2921	2040	881

Name	Town and County	ELEVATION		Height of Climb
		Summit	Base	
● Fourth, B-C-R, ATM	7 R 9, Piscataquis	2400	1200	1200
French Hill	Albany, Oxford	1240	560	680
Freeman Ridge	Freeman, Franklin	1200	460	740
Frohooks	Lincolnton, Waldo	460	0	460
Frost	Brownfield, Oxford	1220	400	820
Frost Hill	Norway, Oxford	970	400	570
▲ Frye	Montville, Waldo	1140	460	680
● Pulling Mill AMC	Riley, Oxford	3450	1600	1850
Gammon Ridge	Temple, Franklin	2312	1240	1072
Garey	Lincolnton, Waldo	760	0	760
Gardner	15 R 9, Aroostook	1817	1134	683
Getchell	Carroll, Penobscot	1041	340	701
Gilman Pond	Lexington, Somerset	1460	371	1089
Glass Face	Rumford, Oxford	1912	610	1302
Glazier Brook	11 R 12, Aroostook	1660	1100	560
Gleason	Temple, Franklin	2060	1190	870
● Glines	Milton Pl., Oxford	1620	700	920
Goose-Eye (See also N. Peak) AMC	Riley, Oxford	3854	1600	2254
Gorham	Mt. Desert, Hancock	506	0	506
Goss Ledge	Bethel, Oxford	1280	714	566
Gould	Hiram, Oxford	1280	440	840
Granny's Cap	Lower Enchanted, Somerset	2740	1180	1560
Gray's	Carthage, Franklin	1320	700	620
Great	Orland, Hancock	1037	20	1017
Great Bear CH (See Bear)	Hartford, Oxford			
Great Bigelow GNC (See Bigelow)				
Great Brook Hill	Otis, Hancock	640	156	484
Great Pond Hill	Bar Harbor, Hancock	540	0	540
Green	Bar Harbor, Hancock	1532	0	1532
Green (Also Bear) q.v.	Riley, Oxford			
Green	Westfield, Aroostook	1300	600	700
▲ Green MFS	4 R 18, Somerset	1500		
Greenbush	Jim Pond, 1 R 5, Franklin	1843	1218	625
Greenlaw	12 R 7, Aroostook	1580	840	740
Green Top	Lynchtown, 5 R 4, Oxford	2315	1517	798
Greenwood AMC	Bowdoin Col. Grant, Piscataquis	2100	1100	1000
Greenwood	Elliottsville Pl., Piscataquis	1150	550	600
Greenwood Hill	Hebron, Oxford	753	360	393
Gregg AMC	Andover, Oxford			
Grey Brook	11 R 13, Aroostook	1640	640	1000
Griffin	New Vineyard, Franklin	2109	609	1500
Guilford	Guilford, Piscataquis	1326	440	886
Gulf Hags ATM	Bowdoin Col. Grant, Piscataquis	3200	1400	1800
Hafey	18 R 11, Aroostook	1640	640	1000
Hall AMC	Andover N. Surplus, Oxford			
Halls Hill	Greenwood, Oxford	1140	719	421
○ Hamlin (See Katahdin)	13 R 9, Aroostook			
Hardscrabble	Hobbsdown, Somerset	2360	1091	1269
Hardwood	Hobbsdown, Somerset	2364	1091	1273
▲ Hardwood MFS	9 R 18, Somerset	1300		
Harnden Hill	Stoneham, Oxford	1300	544	756
Harris	Dixmont, Penobscot	1233	320	913
Hartwell	New Vineyard, Franklin	1500	560	940
Hatchet	Hope, Knox	1115	356	759
Hathorn	4 R 8, Penobscot			



Name	Town and County	ELEVATION		Height of Climb
		Summit	Base	
Hawk	South Waterford, Oxford	1065	375	690
Hawk Ledge	Caratunk, Somerset	1300	451	849
Hawks	Charlotte, Washington	300	76	224
Hayford Hill	Hartford, Oxford	1140	373	737
Haystack	Castle Hill, Aroostook	1341	600	741
Haystack	Liberty, Waldo	840	297	543
■ Haystack	Mason, Oxford	2160	1040	1120
Heagan	Prospect, Waldo	560	0	560
Heald	Lower Enchanted, Somerset	2421	1156	1265
Hedgehog	Hobbs town, Somerset	2600	1091	1509
Hedgehog	D R 2, Aroostook	1103	660	443
Hedgehog	Pierce Pond, Somerset	1940	1142	798
Hedgehog	11 R 4, Aroostook	1480	502	978
▲ Hedgehog	15 R 6, Aroostook	1594	580	1014
Hedgehog Hill	Buckfield, Oxford	1160	643	517
Hedgehog Hill	Byron, Oxford	1312	814	498
Hedgehog Hill	Coplin Pl., Franklin	2087	1155	932
Hedgehog Hill	Norway, Oxford	700	482	218
Hedgehog Hill	Orland, Hancock	521	100	421
Hedgehog Hill	Peru, Oxford	1100	500	600
Hemingway	Milton Pl., Oxford	1860	700	1160
Henry	Bridgton, Cumberland	666	267	399
Highland GNC	A 12, Piscataquis			
Hittie AMC (So. Shoulder Baldpate)	Grafton, Oxford			
Hogback	Montville, Waldo	1115	470	645
Holman	Dixfield, Oxford	1620	500	1120
Horn, The	Madrid, Franklin	4023	1100	2923
● Horns, The (See N. Horn, S. Horn)	Dead River Pl., Somerset			
Horn Hill	Township E, Franklin	2570	1583	987
Horns, The	Lower Cupsuptic, Franklin	3831	1180	2651
▲ Horse MFS Mattagamon NSC	6 R 8, Penobscot			
Horse	11 R 8, Aroostook	1610	740	870
Horseback JHS (See Saddlerock)	B R 11, Piscataquis			
Horse Hill	Oxford, Oxford	875	380	495
Horseshoe	Township 35, Hancock	800	347	453
Hosac	Cornish, York	1300	399	901
Howard (See Bartlett)	Hanover, Oxford			
Howard	Lovell, Oxford	860	420	440
Howard	Machiasport, Washington	266	0	266
Howard Hill	Lexington, Somerset	1480	400	1080
▲ Howe Brook	8 R 3, Aroostook	1100	649	451
Howe Hill	Rumford, Oxford	1440	660	780
Howland	18 R 12, Aroostook	1400	633	767
Hudson	10 R 10, Piscataquis	1935	1178	757
Humpback JHS (See Lead)	Township 28, MD, Hancock			
Hunt	3 R 7, Penobscot			
Hunter	Strong, Franklin	1420	417	1003
Hunt Ridge	Oakfield, Aroostook	1120	484	636
Hurricane	Pierce Pond, Somerset	2142	820	1322
Hurricane	Weld, Franklin	2484	1065	1419
Hutchins Hill	Lexington, Somerset	1812	400	1412
Hutchinson Hill	Hartford, Oxford	1120	460	660
Ick Norton	Industry, Franklin	1680	580	1100
Indian ATM	Bowdoin Col. Grant, Piscataquis			
Indian Stream	Chain of Ponds, 2 R 6, Franklin	2878	1273	1605

Name	Town and County	ELEVATION		Height of Climb
		Summit	Base	
Ingham Hill	Albany, Oxford	1080	660	420
Inlet Ridge	Upton, Oxford	2000	1240	760
Ira	Kingfield, Franklin	1925	680	1245
Irish ?	Center ?	3220	2000	1220
■ Isaiah	Stoneham, Oxford	1220	471	749
Jack	11 R 8, Aroostook	1465	740	725
Jackson	Berlin No. 6, Franklin	3515	1778	1737
Jefferson	Lee, Penobscot	740	399	341
Jellison Hill	Amherst, Hancock	940	200	740
Jim Eaton Hill	Flagstaff, Somerset	1680	1130	550
Jimmies	Township 34, Hancock	740	391	349
Joe McKeen Hill	Lovell, Oxford	1040	376	664
John Newman AMC	Berlin No. 6, Franklin	2900		
Johnson	Bingham, Somerset	1600	500	1100
Johnson	Roque Bluffs, Washington	140	0	140
Johnson	2 R 6, Somerset	2780	1260	1520
Johnson Brook	Allagash, Aroostook	1382	623	759
○ Joe Mary ATM, Jo Merry JHS	A R 10, Piscataquis			
Jones Hill	Hope, Knox	940	500	440
Jordan	Mt. Desert, Hancock	1180	0	1180
Jordan	Riley, Oxford	2720	660	2060
Junior	5 R 1, Penobscot	600	298	302
● Katahdin, Baxter Peak	3 R 9, Piscataquis	5267	593	4674
○ Katahdin, Hamlin Peak	3 R 9, Piscataquis	4751	1000	3751
○ Katahdin, North Peaks	3 R 9, Piscataquis	4734	1144	3590
○ Katahdin, Pamola	3 R 9, Piscataquis	4902	1178	3724
○ Katahdin, South Peak	3 R 9, Piscataquis	5240	593	4647
Kebo	Bar Harbor, Hancock	405	0	405
▲ Kelley	Brighton Pl., Somerset	1700		
Kelley Brook	Allagash, Aroostook	1483	653	830
Kelloch	3 R 8, Penobscot			
Kendall	Alexander, Washington	600	200	400
Kennebago (See East Kennebago)	2 R 4, Franklin			
Kennebago Divide	Seven Ponds, 3 R 5, Franklin	3740	1940	1800
Kenniston	Whiting, Washington	236	0	236
Kenniston Hill	Boothbay, Lincoln	290	0	290
▲ Kibby	1 R 7, Franklin	3638	2120	1518
Kidder	Mexico, Oxford	935	440	495
Kimball Hill	Bethel, Oxford	1780	660	1120
▲ Kineo	Days Acad., Piscataquis	1806	1028	778
King	1 R 7, Franklin	2530	1540	990
King and Bartlett	4 R 5, Somerset	2210	1300	910
Kings	Orrington, Penobscot	820	188	632
Kinney's Head	Temple, Franklin	2100	1030	1070
Knox JHS	Township 36, Washington			
Kokadjo	Middlesex Canal Grant			
Lake	Carthage, Franklin	1220	496	724
Lake	Madawaska, Aroostook	920	581	339
Lake	Roxbury, Oxford	1200	496	704
Lary Brook	Riley, Oxford	2980	680	2300
Law	Wilton, Franklin	1707	500	1207
▲ Lawler Hill MFS	2 R 6, Penobscot			
Lawrence	Albany, Oxford	1420	1000	420
Lawrence CH (See Lawrence, Albany)	Greenwood, Oxford			
▲ Lead	Township 28, MD, Hancock	1475	310	1165

Name	Town and County	ELEVATION		Height of Climb
		Summit	Base	
Ledge Ridge	Parmachenee, 5 R 5, Oxford	2941	1700	1241
Levenseller	Searsmont, Waldo	1020	220	800
Libby Hill	Porter, Oxford	1040	381	659
Lily Bay Mtns. ATM	Frenchtown, 1 R 13, Piscataquis	2800	1000	1800
Limestone Hill	Flagstaff Pl., Somerset	1980	1130	850
Little	Bridgton, Cumberland	1000	418	582
Little	Dixfield, Oxford	1640	392	1248
Little	Industry, Franklin	1720	565	1155
● Little Baldpate AMC	Grafton, Oxford	3500		
Little Bear	Hartford, Oxford	1100	500	600
Little Bear	Riley, Oxford	1860	660	1200
● Little Bigelow	Dead River Pl., Somerset	3001	880	2121
Little Black Cap	Plantation 33, Hancock	740	270	461
Little Blue	Avon, Franklin	2001	1160	841
● Little Boardman ATM	A R 11, Piscataquis			
Little Deer	Stow, Oxford	1080	440	640
Little Jackson	Berlin No. 6, Franklin	3434	1778	1656
Little Kineo	Days Acad., Piscataquis	1931	1028	903
Little Peaked	Clifton, Piscataquis	900	300	600
Little Peaked	5 R 9, Piscataquis			
Little Poplar	Jerusalem, Franklin	1971	789	1182
Little Puzzle AMC	Andover, Oxford	1700		
Little	Edmunds, Washington	200	0	200
Little R. JHS (Little River?)	Township 43, Washington			
▲ Little Russell MFS, NSC	5 R 16, Somerset			
Little Sabattus	Greene, Oxford	537	267	270
Little Singepole	Paris, Oxford	1360	400	960
Little Spencer	Middlesex Canal Grant, Piscataquis			
Little Spring Brook	4 R 8, Penobscot			
○ Little Spruce ATM, (Shanty Ridge)	B R 11, Piscataquis	3274	1000	2274
Little Squaw	Little Squaw Mt., Piscataquis			
Little Turner	Plantation 33, Hancock	570	292	278
Little Zircon	Rumford, Oxford	1900	780	1120
Lobster	3 R 15, Piscataquis			
Locke	Bethel, Oxford	1880	645	1235
Locke Hill AMC	Riley, Oxford	2000	860	1140
Lombard	Lakeville, Penobscot	940	470	470
Lone	Andover, Oxford	1800		
Lone	Mt. Abraham, Franklin	3280	1580	1700
Long	Batchelder's Grant, Oxford	2000	1422	578
Long	Greenwood, Oxford	1820	680	1140
Long AMC	Newry, Oxford	3165		
Long Ridge	Lowell, Penobscot	860	311	549
Long Ridge ATM	A R 12, Piscataquis			
Lookout	Lee, Penobscot	788	303	485
Lookout JHS	West Eustis, 2 R 4, Franklin			
Lord	Grand Falls, Penobscot	800	220	580
Lord	5 R 10, Piscataquis			
Lord Hill	Stoneham, Oxford	1240	466	774
Louise (Partly in Canada)	Coburn Gore, Franklin	2440	1395	1045
Lovejoy	Albany, Oxford	1765	632	1133
Lovejoy	Mexico, Oxford	960	460	500
Lower Cupsuptic	Lower Cupsuptic, 4 R 3, Oxford	2385	1467	918
Lunksoos	4 R 7, Penobscot			
Lyford	Bowdoin Col. Grant, Piscataquis			



Name	Town and County	ELEVATION		Height of Climb
		Summit	Base	
Mack	Prospect, Waldo	605	0	605
Magurrewock	Calais, Washington	390	80	310
● Mahoosuc AMC	Grafton, Oxford	3300	1600	1700
● Mahoosuc Arm AMC	Grafton, Oxford	3400	1600	1800
Maiden Cliff	Camden, Knox	940	100	840
Main Stream	Harmony, Somerset	820	266	554
Maloy	Limington, York	640	360	180
Mann	Newfield, York	1075	400	675
Mansell Peak	Southwest Harbor, Hancock	971	0	971
Marble	Bowman, Oxford	3000	2200	800
Mars Hill	Mars Hill, Aroostook			
Mason	Orland, Hancock	601	20	581
Mason Hill	Stoneham, Oxford	1220	440	780
Mattagammon (See Horse)	6 R 8, Penobscot			
▲ Mattamiscontis MFS NSC	3 R 9, Penobscot	1400		
▲ May	Island Falls, Aroostook	960	430	530
McCabe	Township 10, Hancock	540	187	353
McCaffey ?	Mt. Vernon, Kennebec ?	1240		
McCarthy	5 R 10, Piscataquis			
McDaniels Hill	Stoneham, Oxford	1300	571	729
McDonald	Castle Hill, Aroostook	1120	520	600
McFarland	Bar Harbor, Hancock	761	100	661
McLean	St. Francis, Aroostook	1954	880	1074
Mead	Orland, Hancock	675	20	655
Meadow	Warren, Knox	660	110	550
Mecham Hill	Madrid, Franklin	2090	1140	950
Megunticook	Camden, Knox	1380	0	1380
Merrill	2 R 7, Franklin	3300	2104	1196
Merrill Hill	Newry, Oxford	1900	700	1200
Metalluk ATM, Metallock RLR	Township C, Oxford			
Mica	Paris, Oxford	1000	700	300
Middle	Spaulding, Somerset	2180	980	1200
Middle	11 R 8, Aroostook	1920	1000	920
Middle Peak ATM	Bowdoin Col. Grant, Piscataquis	3000	1400	1600
Miller	Machiasport, Washington	220	0	220
Milton	Centerville, Washington	420	80	340
Misery	Hiram, Oxford	1500	400	1100
Misery Ridge	Misery, Somerset	2047	1040	1007
▲ Mitchell MFS	Haynesville, Aroostook			
Moll Ockett, Molly Ockett CH	Woodstock, Oxford	1900	648	1252
Molunkus Hill RC	1 R 5, Aroostook			
Montgomery	Penobscot, Hancock	340	0	340
Moody	Andover N. Surplus AMC, Town- ship "C", ATM, Oxford	2400		
Moody	Limington, York	783	260	523
Moody	Lincolnvile, Waldo	920	240	680
Moody	Woodstock, Oxford	1360	681	679
Moose	Bald Mt., 4 R 3, Somerset	2220	1566	654
Moose	Magalloway Pl., Oxford			
Moose	Township 3, Penobscot	820	299	521
Moose	1 R 7, Franklin	3090	1840	1250
Moose (See Moose, T 3)	3 R 1, Penobscot			
Moose	14 R 5, Aroostook	1220	620	600
Moose Hill	Beattie, 2 R 8, Franklin	2913	1700	1213
Moose Hill	Cyr, Aroostook	1020	640	380

Name	Town and County	ELEVATION		Height of Climb
		Summit	Base	
Moose Hill	Livermore Falls, Androscoggin	1120	344	776
Mooseleuk	9 R 9, Piscataquis			
Moose Hill	2 R 7, Franklin	2880	1740	1140
Morin	St. Agatha, Aroostook	880	581	299
Morrison Heights	Wayne, Franklin	680	242	438
Morrison Pond	Plantation 33, Hancock	935	279	656
Morse	5 R 10, Piscataquis			
Mosquito	The Forks, Somerset	2230	962	1268
Mosquito	Frankfort, Waldo	545	0	545
Moxie	Spaulding, Somerset	2995	1262	1733
Moxie NSC	East Moxie, Somerset			
▲ Moxie Bald	Bald Mt., 2 R 3, Somerset	2630	980	1650
Mulcalsea	4 R 16, Somerset			
Mule Brook	10 R 10, Piscataquis	1809	1079	730
Mullen	4 R 10, Piscataquis	3450	1240	2210
Munsungun JHS (Passadumkeag?)	Grand Falls Pl., Penobscot			
▲ Musquaocook MFS	14 R 12, Aroostook	1500		
▲ Musquash MFS	Topsfield, Washington	1300		
Nebo	Jay, Franklin	1240	360	880
● Nesuntabunt ATM	1 R 11, Piscataquis			
Newman (See John Newman)				
(See Si Newman)	Berlin No. 6, Franklin			
Newport	Bar Harbor, Hancock	1060	0	1060
New Portland Hill	New Portland, Somerset	1110	400	710
New Vineyard Mts. (See Griffin)	New Vineyard, Franklin			
Nigger Hill	Lexington, Somerset	1800	400	1400
Nighthawk	8 R 3, Aroostook	1351	860	491
Nineteen	E R 2, Aroostook	1160	700	460
Noon	Berlin No. 6, Franklin	2280	1400	880
North Brother	4 R 10, Piscataquis	4143	2820	1323
● North Horn, Mt. Bigelow ATM	Dead River Pl., Somerset	3800		
● North Peak, Goose-Eye AMC	Riley, Oxford	3650	1000	2650
● North Peak, Whitecap Range ATM	Bowdoin Col. Grant, Piscataquis	2800	1400	1400
○ Howe Peaks, Katahdin (q.v.)	3 R 9, Piscataquis			
North Pogy	5 R 9, Piscataquis			
North Traveler	4 R 9, Piscataquis			
North Turner	4 R 9, Piscataquis	3323	820	2503
North Twin	Roxbury, Oxford	2153	620	1533
Norton	New Vineyard, Franklin	1820	480	1340
Norumbega	Mt. Desert, Hancock	880	0	880
Norway NSC	9 R 9, Piscataquis			
▲ Norway Bluff MFS (See Norway)	9 R 9, Piscataquis			
Noyes	Greenwood, Oxford	1440	700	740
▲ Nulhedus MFS	4 R 17, Somerset			
Number 2	Sandy Bay, 5 R 3, Somerset	2600	1660	940
Number 3 (See Third)	7 R 9, Piscataquis			
Number 4 (See Fourth)	7 R 9, Piscataquis			
▲ Number 4 MFS ATM	A R 13, Frenchtown, Piscataquis	2400		
▲ Number 5	Appleton, 6 R 7, Somerset	3095	1636	1459
Number 6	Appleton, 6 R 7, Somerset	3260	1636	1624
▲ Number 9	Township D, 9 R 2, Aroostook	1638	760	878
Number 19 (See Nineteen)	E R 2, Aroostook			
Oak	Lakeville, 4 R 1, Penobscot	911	336	575
Oak JHS	Township 19, Washington			
Oak	Township 35, Hancock	763	360	403

Name	Town and County	ELEVATION		Height of Climb
		Summit	Base	
Oakfield Hills (See Sam Drew)	Oakfield, Aroostook			
Oakes Nubble	Sandy River Pl., 2 R 1, Franklin	2620	1747	873
Oak Hill	Buckfield, Oxford	1360	580	780
Oak Hill	Lovell, Oxford	1160	460	700
Oak Hill	Orland, Hancock	880	162	718
▲ Oak Hill MFS	8 R 5, Aroostook	900		
Observatory JHS, Obs. Mt., CH	Lincoln Pl., 5 R 2, Oxford			
O. J. I.	3 R 10, Piscataquis			
● Old Blue AMC ATM	Township D, Franklin	3755	1198	2557
Old Bluff	Concord, Somerset	1180	335	845
Old Bluff	Wilton, Franklin	1300	602	698
Old Bluff Hill	Chesterville, Franklin	960	325	635
●▲ Old Speck, Old Spec, Speckled AMC	Grafton, Oxford	4250	1500	2750
Old Turk	Byron, Oxford	2424	840	1584
○ Onowa Peak JHS (See Boarstone)	Elliottsville Pl., Piscataquis			
Onion Hill	Seven Ponds, 3 R 5, Franklin	3340	2105	1235
Orcutt	11 R 7, Aroostook	1620	820	800
Ore GNC	6 R 9, Katahdin Iron Works, Piscataquis	3340(?)		
Orvon Hill NSC	Seven Ponds, 3 R 5, Franklin			
▲ Ossipee Hill	Waterboro, York	1050	300	750
Otter Bog	Township 9, Hancock	480	120	360
▲ Otter Lake MFS NSC	3 R 4, Aroostook			
Otter Pond	Bowtown, Somerset	2081	500	1581
Outlet	4 R 3, Aroostook	920	536	384
Overset	Greenwood, Oxford	1340	686	658
Owl	3 R 10, Piscataquis	3736	1040	2690
Owls Head, Owls Head Hill CH	Buckfield, Oxford	1400	362	1134
Owls Head	Jackman, Somerset	2380	1200	1186
Owls Head	Jerusalem, Franklin	2980	663	2317
Oxbow	Township 35, Hancock	540	380	160
Oxbow ?	4 R 5, Oxford	3080		
Oxford, Mt.	Sumner, Oxford	820	400	420
■ Palmer	Stoneham, Oxford	1660	500	1160
○ Pamola (See Katahdin, Pamola)	3 R 9, Piscataquis			
Panther ?	Seven Ponds, 3 R 5, Franklin	3586		
Parker Hill	Lincoln Pl., Oxford	2270	1260	1010
Parker Hill	Parkertown, 5 R 3, Oxford	2407	1514	893
Parkhurst, Parkus	Berlin No. 6, Franklin	2870	960	1910
Parlin	Parlin Pond, Somerset	2430	1237	1193
Parkman	Mt. Desert, Hancock	1020	0	1020
Parsonage Hill	Albany, Oxford	1100	607	493
Parsonage Hill	Sumner, Oxford	1120	463	657
Partridge Peak	Roxbury, Oxford	1993	660	1333
▲ Passadumkeag JHS	Grand Falls Pl., Penobscot	1463	190	1273
Patch	Greenwood, Oxford	1560	686	874
Patrick	Washington, Knox	860	340	520
■ Patte Hill	Albany, Oxford	1120	700	420
Peabody	Albany, Oxford	1540	600	940
■ Peabody	Mason, Oxford	2560	740	1820
Peaked	Clifton, Penobscot	1160	400	760
Peaked	Dedham, Hancock	1104	66	1038
Peaked	Greenwood, Oxford	1240	719	521
Peaked	Hiram, Oxford	1080	280	800
Peaked	Township 7, Hancock	673	200	473



Name	Town and County	ELEVATION		Height of Climb
		Summit	Base	
▲ Peaked MFS	Township 30, MD, Washington			
Peaked	1 R 7, Franklin	2981	1880	1101
Peaked	4 R 7, Penobscot			
Peaked	10 R 8, Piscataquis	2260	1000	1260
Peaked	10 R 10, Piscataquis	2114	1132	982
■ Peaked Hill	Gilead, Oxford	1340	650	690
Peaked Hill	Lexington, Somerset	1861	440	1421
Peaked Hill	Lovell, Oxford	820	376	444
Peaked Hills	Sebago, Cumberland	1107	262	845
Peary	Brownfield, Oxford	940	400	540
Pease	Cornish, York	1140	340	800
Pebley	Bethel, Oxford	1500	640	850
Pemetic	Mt. Desert, Hancock	1262	0	1262
Pennington	15 R 6, Aroostook	1640	783	857
Penobscot	Mt. Desert, Hancock	1180	0	1180
Percival, Mt.	Northport, Waldo	520	0	520
■ Peter	Stoneham, Mason, Oxford	1940	858	1082
Peter Grover Hill	Albany, Oxford	1200	650	550
Philip	Rome, Kennebec	760	247	503
Pettegrove	Machiasport, Washington	160	0	160
Philbrick	Hope, Knox	960	120	840
Phillips	Avon, Franklin	1831	1171	660
Pickard	Dixmont, Penobscot	1221	460	761
Picked NSC (Chase?)	6 R 6, Penobscot			
Picked Chicken Hill	3 R 4, Somerset	1801	1135	666
Picket	Newfield, York	854	420	434
Pickett Henry	Mason, Oxford	2180	660	1520
Pickle Hill	Flagstaff, Somerset	1665	1255	410
Pierce Hill	Moscow, Somerset	1220	380	840
Pierce Pond	Pierce Pond, Somerset	2516	1142	1374
Pike Hill	Norway, Oxford	870	398	472
Pine	Mason, Oxford	2000	656	1344
■ Pine	Stoneham, Oxford	1220	681	539
Pine Hill	Lovell, Oxford	1240	400	840
Pineo	Cooper, Washington	640	420	220
Pinnacle	Garland, Penobscot	955	379	576
Pinnacle	Peru, Oxford	1720	571	1149
Pinnacle	Township 28, Washington	922	360	562
Pinnacle, The	Hartford, Oxford	740	373	367
Pinnacle, The	8 R 3, Aroostook	1129	900	229
Pinnacle, The (See 740 ft. el.)	Hartford, Oxford	580	403	177
Pinnacle, The	Paris, Oxford	1520	832	688
Pinnacle, The	Winterville, Aroostook	1100	581	519
Pinnacle, The	10 R 8, Aroostook	1360	840	520
Pinnacles, The	St. Albans, Somerset	974	245	729
▲ Pirate Hill MFS	11 R 3, Washington			
Pisgah ?	Center ?	3400	2000	1400
Pisgah	Chain of Ponds, 2 R 6, Franklin	3380	1273	2107
Pisgah	Winthrop, Kennebec	809	242	567
Pleasant	Byron, Oxford	2325	1100	1225
▲ Pleasant	Denmark, Oxford	2007	462	1545
Pleasant	Rockport, Knox	1064	280	784
Pleasant	Township 29, Washington	1374	341	1033
Pleasant	10 R 12, Piscataquis			
●▲ Pleasant Pond	The Forks Pl., Somerset	2480	1262	1218

Name	Town and County	ELEVATION		Height of Climb
		Summit	Base	
Plumbago	Newry, Oxford	2480	640	1840
Plummer	Sweden, Oxford	1100	444	656
▲ Pocomoonshine MFS	Princeton, Washington			
Poland	Peru, Oxford	1300	400	900
Pond Hill	Brooks, Waldo	840	304	536
Pope	Weld, Franklin	2185	800	1385
Poplar	Jerusalem, Franklin	2687	780	1907
● Poplar Ridge	Falmouth, Cumberland	472	100	372
Poplar Ridge	Redington, Franklin	3120	1420	1700
Popple Hill	Sweden, Oxford	1080	432	648
Porcupine	Cornville, Somerset	660	428	232
Porcupine	Lee, Penobscot	620	303	317
Porcupine	Perry, Washington	340	0	340
Potato Hill	Madrid, Franklin	2561	880	1681
Potato Hill	Temple, Franklin	1540	680	860
Potato Nubble	Redington, Franklin	3029	1535	1494
● Potaywadjo Ridge ATM	1 R 10, Piscataquis			
Powers	Carroll, Penobscot	1127		
Pratt	New Vineyard, Franklin	1560	629	931
Pray Hill	3 R 5, Somerset	1920	1108	812
▲ Priestly	10 R 13, Piscataquis	1900	1135	765
Prong Pond	Greenville, Piscataquis	2140	1028	1112
Prospect, Mt.	Minot, Androscoggin	900	240	660
Province	Newfield, York	1152	480	672
Pughole	Whiting, Washington	380	0	380
Puzzle AMC	Newry, Oxford	3000		
Pyle	Castle Hill, Aroostook	1280	560	720
Quaggy Joe	Presque Isle, Aroostook	1213	519	694
Quill Hill	Dallas, 2 R 2, Franklin	2842	1300	1542
Quillpig	Township 34, Hancock	749	373	376
▲ Ragged MFS	Indian No. 4, Penobscot			
Ragged	Rockport, Knox	1300	324	976
Ragged Jack	Hartford, Oxford	1020	463	557
Ragged Jack	Peru, Oxford	1540	463	1077
○ Rainbow ATM	2 R 11, Piscataquis			
Rattlesnake	Albany, Oxford	1460	580	880
Rattlesnake	Casco, Cumberland	1046	277	769
Randall	Parsonfield, York	1105	460	645
Rattlesnake	Porter, Oxford	1160	600	560
■ Rattlesnake	Stoneham, Oxford	1280	580	700
Record Hill	Byron, Oxford	2410	740	1670
Red Hill	Peru, Oxford	1120	411	709
Redington Pd. Range	Redington, Franklin	3984	1616	2368
Red Ridge	Grafton, Oxford	2940	1600	1340
■ Red Rock	Stoneham, Mason, Oxford	2120	610	1510
Rice's Hill	East Waterford, Oxford	1320	492	828
Rich's	Livermore, Androscoggin	587	280	307
Ricker CH (See Burgess Hill?)	Peru, Oxford			
Riley AMC	Riley, Oxford			
Roaring Brook ATM	7 R 9, Piscataquis	1950	600	1350
Robbins Hill	Hiram, Oxford	1340	440	900
Robertson	Monroe, Waldo	640	240	400
Robinson	Mt. Desert, Hancock	680	0	680
Robinson Peak	Riley, Oxford	2800	680	2120
▲ Rocky MFS	17 R 12, Aroostook			

Name	Town and County	ELEVATION		Height of Climb
		Summit	Base	
▲ Rocky Brook Mts. ....	11 R 10, Aroostook .....	2052	1160	892
Rocomeko CH (See Canton) .....	Canton, Oxford .....			
Roosevelt (See Sentinel) .....	3 R 10, Piscataquis .....			
Round .....	Albany, Oxford .....	1820	700	1120
Round .....	Township 10, Hancock .....	566	158	408
Round .....	Alder Stream, 2 R 5, Franklin .....	3127	1800	1527
Round .....	10 R 11, Piscataquis .....			
▲ Round .....	11 R 8, Aroostook .....	2147	958	1189
● Roundtop .....	Carrying Place, Somerset .....	2240	1200	1040
Round Top JHS, GNC .....	Wellington, Piscataquis .....			
Round Top ATM (See R. T. above) ..	Katahdin Iron Works, Piscataquis ..	1350	650	700
Rowe Hill .....	Greenwood, Oxford .....	1140	694	446
Roxbury .....	Roxbury, Oxford .....	2251	540	1711
Rum .....	3 R 9, Piscataquis .....	3361	593	2768
Rumford Whitecap .....	Rumford, Oxford .....	2197	640	1557
Rump .....	5 R 5, Oxford .....	3647	1800	1847
Russell ATM .....	Blanchard, Piscataquis .....			
Russell .....	4 R 9, Piscataquis .....	2801	1200	1601
Russell (See Little Russell) .....	5 R 16, Somerset .....			
Ryemoor Hill .....	Sumner, Oxford .....	1360	582	778
Ryerson Hill .....	Paris, Oxford .....	1420	700	720
Sabao .....	Township 41, Hancock .....	1087	345	742
Sabattus .....	Lovell, Oxford .....	1280	376	904
Sabattus .....	Wales, Androscoggin .....	802	239	563
Sable .....	5 R 9, Piscataquis .....			
Sable Ridge .....	3 R 4, Franklin .....	2615	1800	815
Sabotawan (See Spencer) .....	2 R 13, Piscataquis .....			
Saddleback (See Baldpate) .....	Grafton, Oxford .....			
●▲ Saddleback .....	Sandy River, 2 R 1, Franklin .....	4116	1520	2596
Saddleback .....	9 R 3, Aroostook .....	1695	895	700
Saddleback Hills (See Douglas Hill and Webb Rowe Hill) .....	Baldwin, Sebago, Cumberland .....			
● Saddleback Junior .....	Madrid, Franklin .....	3640	880	2760
Saddleback, The .....	Hartford, Oxford .....	1680	500	1180
Saddle Hill .....	Bowman, Oxford .....	3192	2200	992
Saddlerock ATM .....	B R 11, Piscataquis .....	3054	1000	2054
Sally .....	Attean, Somerset .....	2221	1157	1064
Sam Drew .....	Oakfield, Aroostook .....	1500	555	945
Sandy Bay .....	Sandy Bay, Somerset .....	3117	1680	1437
Sandy Stream .....	Sandy Bay, Somerset .....	2869	1376	1493
● Saple Hill AMC Sable ATM .....	Andover North Surplus, Oxford .....			
Sargent AMC .....	Newry, Oxford .....			
Sargent, D .....	Mt. Desert, Hancock .....	1344	0	1344
Savage Hill .....	Concord, Somerset .....	1040	340	700
○ Sawyer AMC, ATM .....	Andover North Surplus, Oxford .....	1100		
Sawyer .....	Limerick, York .....	1220	380	840
Sawyer Hill Ridge .....	2 R 4, Franklin .....	2340	1680	660
Schoodic .....	Winter Harbor, Hancock .....	437	0	437
▲ Schoodic .....	Township 9, SD, Hancock .....	1069	120	949
Schoodic .....	5 R 9, Piscataquis .....			
Seashore .....	Machiasport, Washington .....	160	0	160
Sebatos CH (See Sabattus) .....	Lovell, Oxford .....			
Sentinel, Sentinel JHS .....	3 R 10, Piscataquis .....	1750	500	1250
Shackley Hill .....	Livermore, Androscoggin .....	1120	392	628
Shanty Ridge (See Little Spruce) ..	B R 11, Piscataquis .....			



Name	Town and County	ELEVATION		Height of Climb
		Summit	Base	
Shaw	Days Acad., Piscataquis	1664	1028	636
Shell JHS, CH (Rattlesnake?)	Stoneham, Oxford			
Shaw Ledge	Greenwood, Oxford	1220	540	680
Shepherd Brook	12 R 12, Aroostook	1722	1020	702
Shutdown	Upper Enchanted, Somerset	2532	1400	1132
Simmons Hill	Hope, Knox	980	400	580
St Newman AMC	Berlin No. 6, Franklin	2700		
Singepole	Paris, Oxford	1420	431	989
Sisk	Chain of Ponds, 2 R 6, Franklin	3220	1273	1947
Skillings Hill	Lovell, Oxford	1120	571	549
Slide AMC	Grafton, Oxford			
Slidedown	Sandy Bay, Somerset	2691	1376	1315
Smalls	Hiram, Oxford	800	360	440
Smart (See Smart 2 R 7, Franklin)	1 R 7, Franklin	3252	1640	1612
Smart	2 R 7, Franklin	3286	1640	1646
▲ Snow	Alder Stream, 2 R 5, Franklin	3948	1273	2675
Snow	Upper Cupsuptic, 4 R 4	3756	1920	1836
Snow	Winterport, Waldo	742	160	582
Sol Ridge	3 R 4, Franklin	2500	1782	718
▲ Soper MFS JHS	8 R 12, Piscataquis			
▲ Soubunge MFS	4 R 11, Piscataquis			
South	Spaulding, Somerset	2080	1000	1080
South Branch	5 R 9, Piscataquis			
South Brother	3 R 10, Piscataquis	3951	2820	1131
● South Horn, Mt. Bigelow ATM	Dead River Pl., Somerset	3831		
South Pogy	4 R 9, Piscataquis			
South Traveler	5 R 9, Piscataquis			
South Turner	3 R 9, Piscataquis	3122	1200	1922
South Twin	Rumford, Oxford	2156	600	1556
Sparrowhawk	Bethel, Oxford	1425	673	752
● Spaulding	Mt. Abraham, Franklin	3988	1240	2748
Spears	Montville, Waldo	1140	460	680
● Speckled JHS (See Old Speck)	Grafton, Oxford			
Speckled	Peru, Oxford	2207	800	1407
Speckled	Stoneham, Oxford	2877	580	2297
Spectacle	10 R 8, Aroostook	1620	1000	620
Spencer	Hobbs town, 4 R 6, Somerset	2410	1091	1319
Spencer JHS	Middlesex Canal Grant, Piscataquis			
Spencer NSC	T 10 or Gore 10, Piscataquis			
▲ Spencer MFS ATM	2 R 13, Piscataquis	3035		
Spencer Bale	1 R 7, Franklin	3285	1680	1605
Spencer Peaks 45°-24'-30" N, 70°-25' W	5 R 6, Somerset	2521	1440	1021
▲ Spoon MFS NSC	8 R 7, Penobscot			
Spotted	Davis, 3 R 3, Franklin	3326	1620	1706
Spotted Spruce	4 R 5, Somerset	2344	1300	1044
Spring River	Township 10, Hancock	400	187	213
Springy Brook	Township 32, Hancock	1030	220	810
Spruce	Aurora, Hancock	885	260	625
Spruce	Avon, Franklin	2649	793	1846
Spruce	Beddington, Washington	1076	256	820
Spruce (See Little Jackson)	Berlin No. 6, Franklin			
Spruce	Jay, Franklin	1120	460	660
Spruce	Rockport, Knox	960	169	791
Spruce	Weld, Franklin	2546	800	1746

Name	Town and County	ELEVATION		Height of Climb
		Summit	Base	
● Spruce	Woodstock, Oxford	2440	855	1585
■ Spruce	Township D, Franklin	2420	1464	956
■ Spruce Hill	Batchelder's Grant, Oxford	2520	1200	1320
Spruce Hills (See The Pinnacle, Paris and Mt. Tom, Sumner)	Paris, Sumner, Oxford			
▲ Squapan MFS	11 R 4, Aroostook	1460		
Square Dock, Square Doch CH	Albany, Oxford	1300	580	720
▲ Squaw	Big Squaw Mt., Piscataquis	2371	1028	1343
Squirrel	11 R 13, Aroostook	1300	821	479
Squirt Dam				
St. Albans	Ripley, Somerset	1090	245	845
Staples	Baileyville, Washington	1040	160	880
Starks	Fryeburg, Oxford	1020	358	662
Stearns Hill	Paris, Oxford	1000	461	539
Stearns Hill	Waterford, Oxford	1340	560	780
Stewart	Highland Pl., Somerset	2671	1100	1571
▲ Stockholm	Stockholm, Aroostook	974	540	434
Stockwell Hill CH (Burgess Hill?)	Peru, Oxford			
Stone (See Burnt Meadow)	Brownfield, Oxford	1580	451	1129
Stone	Hebron, Oxford	1280	420	860
Stony Brook	Lower Enchanted, Somerset	1440	920	520
Streaked	Hebron, Oxford	1770	800	970
Stream	Davidson, 2 R 6, Penobscot	2878	1300	1578
Strickland	4 R 10, Piscataquis			
St. Sauveur	Southwest Harbor, Hancock	670	0	670
Stubbs	Avon, Franklin	1585	420	1165
Sturtevant	Magalloway Pl., 5 R 1, Oxford	2160	1246	914
■ Styles	Stoneham, Oxford	1280	376	904
■ Sugar Hill JHS (See Sugarloaf)	Stoneham, Oxford			
Sugarloaf	Brownfield, Oxford	1060	800	260
Sugarloaf	Crookertown, 4 R 2, Franklin	4237	1306	2931
Sugarloaf, Sugar Loaves CH	Dixfield, Oxford	1521	440	1081
Sugarloaf	Stow, Oxford	1420	580	840
■ Sugarloaf	Stoneham, Oxford	1500	440	1060
Sugarloaf	5 R 7, Penobscot			
Summit	Summit, Penobscot	620	160	460
Sumner Hill	Sumner, Oxford	1180	480	700
Sunday River Whitecap AMC	Newry, Oxford	3500	940	2640
Surplus ATM, AMC	Andover West Surplus, Oxford			
Swan Hill	Bethel, Oxford	1301	620	681
Tanquoomuc	7 R 15, Piscataquis			
Tantrattle	Avon, Franklin	1602	519	1083
Tea	Jim Pond, 1 R 5, Franklin	1870	1307	513
Tear Cap	Hiram, Oxford	1020	396	624
● Third B-C-R, ATM	7 R 9, Piscataquis	2250	1200	1050
Thirty-five Ridge	Township 29, Washington	840	341	499
Thomas	Hope, Knox	1000	200	800
Thompson Hill	Hartford, Oxford	1000	403	597
Thompson Hill	Mexico, Oxford	1620	480	1140
Thorne	Hartford, Oxford	1300	400	900
Thrasher Peaks	Parmachenee, 5 R 5, Oxford	2620	1660	960
▲ Three Brooks MFS	15 R 6, Aroostook	1578		
Three Slide	5 R 6, Somerset	3112	1600	1512
Thurston	Rumford, Oxford	1460	800	660
Tibbetts	Brownfield, Oxford	840	500	340

Name	Town and County	ELEVATION		Height of Climb
		Summit	Base	
Tibbetts	Greenwood, Oxford	1800	763	1037
Tim	West Eustis, 2 R 4, Franklin	3031	1600	1431
Timoney	Oakfield, Aroostook	1160	484	676
Tim Pond JHS (See Tim)	West Eustis, 2 R 4, Franklin			
Tirem, Mt.	Waterford, Oxford	1047	375	672
Tom	Smithfield, Somerset	765	250	515
Tom	Sumner, Oxford	1700	500	1200
Tom, Mt.	Charlotte, Washington	400	80	320
Tom, Mt.	Fryeburg, Oxford	1040	380	660
Trask	Peru, Oxford	1700	571	1129
Traveler The, Travelers JHS (See N. and S. Traveler)	5 R 9, Piscataquis			
Triad, The	Mt. Desert, Hancock	720	0	720
Trimble	Robbinston, Washington	534	0	534
Trout ATM	A R 12, Piscataquis			
▲ Trout	2 R 9, Piscataquis	1440	478	962
Trout Brook	6 R 9, Piscataquis			
Trout Pond	Amherst, Hancock	820	280	540
True	Industry, Franklin	1540	860	680
Tucker	Sullivan, Hancock	397	0	397
Tucker Brook	Township 10, Hancock	375	138	237
Tug JHS	Township 30, Washington			
Tumbledown	Berlin No. 6, Franklin	3035	900	2135
▲ Tumbledown	5 R 6, Somerset	3542	1680	1862
Tumbledown Dick	Gilead, Oxford	1740	669	1071
Tumbledown Dick	Peru, Oxford	1520	520	1000
Tunk	Township 10, Hancock	1157	235	922
Turk JHS, Turk, Mt. CH (See Old T)	Byron, Oxford			
Turner JHS (See N.S.E. Turner)	3 R 9, 3 R 8, Piscataquis			
Turner Hill	Buckfield, Oxford	1180	600	580
Twin	Gilead, Oxford	1300	700	600
Twin Mountains	Upper Cupsuptic, 4 R 4, Oxford	3580	1782	1798
Twin Peaks	Bowman, 4 R 6, Oxford	3010	1940	1070
Twombly	Monroe, Waldo	630	240	390
■ Tyler	Mason, Oxford	2180	780	1400
Uncle Tom (Ice Caves)	Greenwood, Oxford	1703	900	800
Van Dyke	Beattie, 2 R 8, Franklin	3190	1720	1470
Varbunde	5 R 9, Piscataquis			
Varnum	Temple, Franklin	1741	667	1084
Veazy Ridge	Flagstaff, Somerset	1580	1160	420
Veto JHS, GNC	4 R 11, Piscataquis			
Vienna	Vienna, Kennebec	1060	335	725
Vose	Kingfield, Franklin	2025	600	1425
▲ Wadleigh ATM, MFS	1 R 12, Piscataquis	1000		
Walde, Mt.	Frankfort, Waldo	1062	0	1062
Walker	Roxbury, Oxford	2700	740	1960
Walkers	Bethel, Oxford	1560	660	900
Wallamatogus	Penobscot, Hancock	480	0	480
▲ Washington Bald, MFS	Township 42, MD, Washington	1100		
Wassataquoik	4 R 10, 4 R 9, JHS, Piscataquis	2984	1472	1512
Watersport CH (See Farwell)	Bethel, Oxford			
Webbers GNC	4 R 9, Piscataquis			
Webb Rowe Hill	Baldwin, Cumberland	1372	262	1110
Welcome Hill	Freeman, Franklin	1320	500	820
Wellington Ridge	C R 2, Aroostook	900	430	420



Name	Town and County	ELEVATION		Height of Climb
		Summit	Base	
▲ Wesley MFS	Wesley, Washington			
West	Byron, Oxford	2804	780	2024
West	Portage Lake, Aroostook	1020	609	411
Western (See Mansell P. & Bernard)	Southwest Harbor, Hancock			
▲ West Kennebago	Upper Cupsuptic, 4 R 4, Oxford	3075	1720	1985
○ West Peak, Whitecap, ATM	Bowdoin Col. Grant, Piscataquis	3000	1400	1600
West Peak (See Bernard)	Southwest Harbor, Hancock			
West Peak, Mt. Bigelow ATM, (See Bigelow)	Dead River Pl., Somerset			
Whaleback, Whales Back JHS	Byron, Oxford	2262	780	1482
Whales Back	Porter, Oxford	1540	800	740
Wheeler, Wheelers CH	Riley, Oxford	2262	900	1362
Whetstone	2 R 7, Penobscot			
● Whitecap ATM	E Bowdoin Col. Grant, Piscataquis	3707		
● Whitecap, Bear River (See Baldpate)	Grafton, Oxford			
White Cap (See Rumford Whitecap)	Rumford, Oxford			
Whitecap, Sunday River (See S.R.W.)	Newry, Oxford			
White Cap	Seven Ponds, 3 R 5, Franklin	3815	1940	1875
Whitecap Range (See Whitecap, North Peak, Middle Peak, West Peak ATM)	Bowdoin Col. Grant, Piscataquis			
Whitecap, The	Bar Harbor, Hancock	925	275	650
Whitman	Woodstock, Oxford	1420	500	920
Whitman	15 R 9, Aroostook	1810	1128	682
▲ Whitney Hill MFS	Macwahoc Pl., Aroostook			
Whittemore Bluff	Dixfield, Oxford	1020	408	612
Wiggin	Parsonsfield, York	1275	480	795
Wilbur	Bethel, Oxford	1860	640	1220
Wilkins ?				
Wildcat RLR	1.5M SW of E. Kennebago	2625		
Wilder Hill	Temple, Franklin	2120	992	1128
Wiley AMC	Stow, Oxford	900	380	520
Will, Mt.	Newry, Oxford	1740	636	1104
▲ Williams	Misery, 2 R 7, Somerset	2396	1444	952
Wilson Hill	West Forks, Somerset	1560	760	800
Winche	Brooksville, Hancock	320	0	320
Winn's Hill	Sweden, Oxford	1180	505	675
Witham	Highland Pl., Somerset	2301	560	1741
Witt Hill	Greenwood, Oxford	1320	500	820
Woodbury Hill	Sweden, Oxford	1080	480	600
Wyman's Hill AMC, Wyman ATM	Andover North Surplus, Oxford			
Yankeetuladi	18 R 10, Aroostook	1140	559	581
Yellowbirch	Whiting, Washington	340	0	340
Youngs	Bar Harbor Hancock	706	200	506
Zircon	Peru, Oxford	2240	800	1440



Below are listed the various booklets that may be obtained simply by addressing the Maine Development Commission, State House, Augusta, Maine.

Maine, the Land of Remembered Vacations

Fishing, Hunting and Canoeing

Hotels, Camps and Tourist Homes

Facts About Maine

State Highway Map

99 Potato Recipes

Maine in Autumn

Maine for Winter Sports

Maine Bridle Paths



Mountain  
Climbing  
IN  
MAINE

