

1957

Directory of Streets and Information for Bangor and Vicinity Maine (Including Brewer, Ellsworth, Hampden, Old Town, Orono, & Veazie)

Penobscot News Agency

Interstate Publishing Company

Follow this and additional works at: https://digicom.bpl.lib.me.us/books_pubs

Recommended Citation

Penobscot News Agency and Interstate Publishing Company, "Directory of Streets and Information for Bangor and Vicinity Maine (Including Brewer, Ellsworth, Hampden, Old Town, Orono, & Veazie)" (1957). *Books and Publications*. 309.
https://digicom.bpl.lib.me.us/books_pubs/309

This Book is brought to you for free and open access by the Special Collections at Bangor Community: Digital Commons@bpl. It has been accepted for inclusion in Books and Publications by an authorized administrator of Bangor Community: Digital Commons@bpl. For more information, please contact ccoombs@bpl.lib.me.us.

Revised Edition

75c



INTERSTATE'S

*Directory of Streets
& Information*

BANGOR and Vicinity **MAINE**

INCLUDING

Brewer - Ellsworth - Hampden - Old Town
Orono - Veazie

WITH INDEXED MAP OF

Bangor, Brewer, Orono, Dow AFB and
University of Maine Campus

Distributed By

PENOBSCOT NEWS AGENCY
STATE ST., VEAZIE, MAINE

LIGHT
is the
BIGGEST
Thing
in
Seeing



BANGOR HYDRO ELECTRIC CO.

"Electric Service in Eastern Maine"

BANGOR, MAINE

BANGOR

and Vicinity

From
Aunt Margaret
Aug 1986



DIRECTORY OF STREET'S AND INFORMATION

WITH INDEXED MAP OF
Bangor, Brewer, Orono, Dow AFB and
University of Maine Campus

Copyright MCMLVIII - Interstate Pub. Co., Inc., Boston 10, Mass.

12110V67C1

TABLE OF CONTENTS

Bangor Information & Streets	2 & 8
Brewer Information & Streets	19 & 20
Ellsworth Streets	22
Hampden Streets	23
Old Town Information & Streets	26 & 28
Orono Information & Streets	31
Veazie Information & Streets	32
Miscellaneous Information	33
Classified Advertisers	48

PILOTS GRILL

MAINE'S ULTRA MODERN RESTAURANT

FAMOUS FOR QUALITY FOOD



New ROCOCO Room

SEA FOOD A SPECIALTY

Hammond St. next to Queen City Motel

For Reservations Phone Bangor 2-6325

BANGOR INFORMATION

Bangor, a commercial and industrial city in east central Maine, is located approximately 65 miles northeast of Augusta. Situated on the Penobscot River 55 miles from the Atlantic Ocean, Bangor is an important summer and fall tourist and recreational center. The city has a population of approximately 37,000.

There are also many locations in Bangor which feature the winter sports: skating, tobogganing, and skiing. Bangor is the door to the North Woods, for the surrounding northern country is dotted with lakes, streams, and hills, with a good highway system to carry the traveler from one resort to another.

The first white settler, Jacob Buswell, came to present-day Bangor in 1769. In 1776 there were 75 colonists in the area. This total was increased greatly at the close of the Revolutionary War when the Reverend Seth Noble arrived with more settlers from Massachusetts Bay Colony. At this time Maine was still a part of Massachusetts. It did not attain statehood until 1820.

The Reverend Noble was sent to Boston to petition for incorporation of the settlement. The General Court of

MANZIE I. ROGERS

"Maine's Oldest Paving Contractor"

**GENERAL CONTRACTING
ROAD BUILDING - CONCRETE
HOT TOP - BLACK TOP
TARVIA
DRIVEWAYS and SIDEWALLS
RECONDITIONED**

43 Birch St.

Bangor, Maine

Telephone 2-2079

Massachusetts, assented to the incorporation on February 25, 1791. The town was later chartered as a city in 1834.

In the early days of the settlement, Bangor had many names. The French and Indians called the area Kadesquit, Conduskeag, and later, Kenduskeag. However, the Reverend Noble, sent to Massachusetts to incorporate the town, solaced himself on the long journey by singing his favorite hymn, "Bangor." This so inspired him that he asked that the town be named Bangor instead of Sunbury, as formerly proposed. The General Court of Massachusetts granted the incorporation under the city's present name in 1791.

The British occupied Bangor in the War of 1812 and wreaked such havoc on the countryside that the progress of the city was greatly impeded. However, bridges and roads connecting the north section of the state were con-

(Continued on Next Page)

structed in the years that followed. The vast timberlands of Maine, especially in the vicinity of Bangor, made the city in 1870 the foremost lumber market of the world. The population of Bangor grew in leaps and bounds due to the great success of the shipyards and sawmills. Lumbering, pulp and paper mills are still the chief industries today.

Many educational institutions are located in the Bangor area: the Bangor Theological Seminary, the University of Maine at Orono, the Bangor Society of Art, the Northern Conservatory of Music, Husson College, Beal Business College, and the Progressive Business College.

Bangor is the home of Dow Air Force Base of the Strategic Air Command.

BANGOR PUBLIC SCHOOLS

Abraham Lincoln Schl., Palm St.

Fairmount Schl., 58 Thirteenth St.

Fifth St. Junior High Schl., 143 Fifth St.

Fruit St. Schl., Fruit St.

Garland St. Junior High Schl., 304 Garland St.

High Schl., 183 Harlow St.

Larkin St. Schl., 24 Larkin St.

Longfellow Schl., 311 Center St.

Mary S. Snow Schl., Broadway

Valentine Schl., 136 Union St.

Vine St. Schl., 172 Sixth St.

BANGOR CHURCHES

Advent Christian Church, Center St. cor. Cumberland St.

All Souls Church (Congregational), 10 Broadway

Bangor Spiritualist Society, 159 Union St.

Christian & Missionary Alliance, 55 Court St.

Church of Christ, 516 Union St.

Church of God, 199 Exchange St.

Church of the Nazarene, Cedar St. cor. Sanford St.

Columbia St. Baptist Church, 63 Columbia St.

Congregation Beth Abraham, 145 York St.

Congregation Beth Israel, 144 York St.

Congregation Toldos Itzchock, 37 Essex St.

East Bangor Congregational Church, Pushaw Rd.

Essex St. Free Baptist Church, 84 Essex St.

First Baptist Church, 56 Center St.

First Christian Church, 519 Hammond St.

First Church of Christ, Scientist, 183 French St.

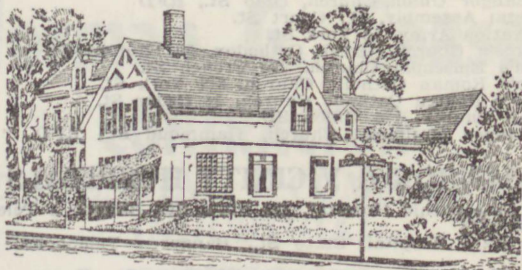
First Methodist Church, 155 Pine St.

First Universalist Church, 120 Park St.

Forest Av. Congregational Church, 300 Forest Av.

Grace Methodist Church, 193 Union St.

Hammond St. Congregational Church, 176 Hammond St.



GREENLAWN MEMORIAL

Funeral Home

KERMIT INGRAHAM, Prop.

Serving All Faiths

**A HOME WHERE THOSE WE LOVE
MAY REST IN PEACEFUL SURROUNDINGS**

**PERSONALIZED SERVICE
WITHIN THE MEANS OF ALL
AMBULANCE SERVICE**

**300 State St. Bangor, Maine
Bangor 7870**

**MONUMENTS AND MARKERS
FURNISHED ON REQUEST**

Jehovah's Witnesses, 26 Central St.
 North Bangor Union Church, Ohio St., RFD
 Pentecostal Assembly, 117 Court St.
 The Salvation Army, 55 York St.
 St. George's Church, Greek Orthodox, 90 Sanford St.
 St. John's Episcopal Church, 225 French St.
 St. John's Roman Catholic Church, 217 York St.
 St. Mary's Roman Catholic Church, 38 Cedar St.
 Unitarian Church, 126 Union St.
 West Bangor Methodist Church, Hammond St., RFD

BANGOR & VICINITY HOSPITALS

Bangor Osteopathic Hospital, 292 State St., Bangor - Telephone:
 Bangor 9418
 Bangor State Hospital, State St., Bangor - Telephone: Bangor
 7386
 Eastern Maine General Hospital, 489 State St., Bangor - Tele-
 phone: Bangor 2-6351
 Home Private Hospital, 61 Oak St., Old Town - Telephone: Old
 Town 7-3665
 Penobscot Valley Hospital, 23 Holyoke St., Brewer - Telephone:
 Bangor 7844
 St. Agnes Hospital, 26 Fifth St., Bangor - Telephone: Bangor
 4630
 St. Joseph's Hospital, 297 Center St., Bangor - Telephone: Bangor
 2-4621

BANGOR & VICINITY HOTELS & MOTELS

Acadia House, 142 Hancock St., Bangor
 Adams House, 36 Washington St., Bangor
 Airline Motor Court, 1043 N. Main St., Brewer
 Anchorage Hotel-Motel, 371 Stillwater Av., Old Town
 Bangor Exchange Hotel, 99 Pickering Sq., Bangor
 Bangor House, 174 Main St., Bangor
 Claredon Inn, 145 Union St., Bangor
 Ebbtide Motel, 875 N. Main St., Brewer
 Fairmont Terrace Motel, 513 Hammond St., Bangor
 Grant, J. M., Jr., 513 Hammond St., Bangor
 Gray Stone Motel, Veazie
 Linwood Lodge, 39 High St., Bangor
 Mokler's Travel-Lite Motel, Bar Harbor Rd., Bangor
 New Davenport Hotel, 265 Main St., Bangor
 Northern Hotel, 91 Exchange St., Bangor
 Page House, 77 Union St., Bangor
 Penobscot Hotel, 139 Exchange St., Bangor
 Pine Tree Lodge, 58 Cedar St., Bangor
 Queen City Motel, 1476 Hammond St., Bangor
 Regal Hotel, 121 Union St., Bangor
 Riverview Motel, 820 State St., Bangor
 Russell, Gladys B., 148 Union St., Bangor
 Salvation Army, 55 York St., Bangor
 Stucco Lodge Motel, State St., Veazie

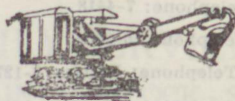
Norman G. Ceaser

CONTRACTOR

RESIDENTIAL - COMMERCIAL INDUSTRIAL

BUDGET TERMS

Available On All Types Of Work



EXCAVATING CONTRACTORS

ANYWHERE - ANYTIME

NO JOB CONSIDERED TOO SMALL

Power Shovel - Crane & Backhoe - Bulldozing

Driveways - Lawns - Parking Lots

SAND, GRAVEL, LOAM & FILL

QUALITY WORK

At Low Rates By The Job Or By The Hour

Thirteenth St.

Bangor, Me.

Tel. Bangor 3465

Terrace Hotel, 77 Columbia St., Bangor
 Twin City Motel, 453 Wilson St., Brewer
 Union Hotel, 135 Union St., Bangor
 Veazie Tourist Court, New State Rd., Veazie
 Victoria Hotel, 95 Exchange St., Bangor
 Village Green Motel, 345 Wilson St., Brewer
 Whitcomb's Motel & Cabins, 444 Wilson St., Brewer

BANGOR & VICINITY THEATRES

Bijou Theatre, 164 Exchange St., Bangor
 Loew's E M Brewer Drive-In Theatre, Bar Harbor Rd., Bangor
 Opera House, 131 Main St., Bangor
 Strand Theatre, S. Main St., Old Town

U. S. POST OFFICE DEPARTMENT

BANGOR:

General Post Office Building - Telephone: Bangor 6496

BREWER:

149 N. Main St. - Telephone: Bangor 9642

OLD TOWN:

146 Center St. - Telephone: 7-4418

ORONO:

1 Bennoch St. - Telephone: 6-2566

S. BREWER:

515 S. Main St. - Telephone: Bangor 2-1272



BANGOR STREETS

Abbott La fr 364 Ohio w'ly
 Abbott Sq fr Harlow w'ly to
 Kenduskeag Stream
 Adams fr 147 State to 162 York
 Alden fr 319 Bdwy to N French
 Allen Ct fr 91 Court ne'ly
 Allen fr 587 Hammond n'ly
 Angela fr Enfield e'ly to How-
 ard
 Arch fr Main s'ly ac RR
 Arctic fr 587 Bdwy e'ly
 Arminta fr 219 Fourteenth
 nw'ly to 15th
 Ash fr Hickory to Cherry
 Autumn fr 273 Ohio ne'ly to
 Drummond
 Bailey fr Spaulding ne'ly to
 Ohio
 Barker fr 299 Main to 88 First
 Bates fr 59 Harvard e'ly to
 Dartmouth

Bean Ct fr 50 Court w'ly
 Beech fr Plum s'ly
 Beecher Pk fr 585 Union to 15th
 Beecher fr Union to Ohio
 Bellevue Av fr Garland n'ly &
 s'ly to State
 Bill fr N French to E Bdwy
 Birch fr 380 Hancock to Ham-
 lin Av
 Blackstone fr 19 Fountain to
 204 Center
 Blake Pl fr 50 Market in semi-
 circle to 62 Market
 Blanchard fr Sunbury Av n'ly
 bey Knox Av
 Bond fr 234 Buck to Bridgham
 Boutelle Rd fr 698 Hammond to
 107 Webster Av
 Bowdoin Pl fr 51 Bowdoin to
 68 Wing

FRED'S EXPRESS



DAILY SERVICE TO
FRANKLIN - HANCOCK - SULLIVAN
SORRENTO - GOULDSBORO
WINTER HARBOR - STUBEN - MILLBRIDGE
CHERRYFIELD - HARRINGTON - ADDISON
COLUMBIA FALLS - CENTERVILLE
BEALS ISLAND - JONESPORT
& ALL INTERMEDIATE POINTS

25 Emerson St.

Bangor, Me.

Tel. 9435

- Bowdoin fr 520 Hammond to Sixth
 Bower fr 44 Everett to 199 Ohio
 Boyd fr 185 State to 274 Hancock
 Boylston fr Ruby n'y
 Boynton fr 100 Court to 65 Ohio
 Bragg fr Knox Av to Sherman Av
 Brewster fr 19 Nash to Naylor
 Bridgham fr Catell to Carver
 Broad fr 38 Hammond s'y to Front (17 - 39 called Mercantile Sq)
 Broadway fr 94 York to Glenburn line
 Brookline Av fr Fairfax Av
 Brown fr 205 State to 218 York
 Bruce Rd fr Valley Av to 382 Kenduskeag Av
 Bryant fr 35 Hersey Av to 142 Allen
 Buck fr MC RR tracks crossing Main at 493 Main to 120 Webster Av
 Burleigh Rd fr Essex to Bdwy
 Buswell fr Fillmore sw'y
 C fr Miller w'y to Hermon line
 Carmen Av fr Hammond s'y to Gray
 Carr fr bet 240 & 242 Hancock to 167 York
 Carroll fr 169 Third to Fifth
 Carter fr 713 Union n'y to Ohio
 Carver fr 250 Lincoln to Bridgham
 Castine fr 248 Elizabeth Av to 167 Thirteenth
 Catell fr 595 Main nw'y & ne'y to Buck
 Cedar fr 51 Summer to bey W Bdwy
 Center fr 77 Harlow to 476 Bdwy
 Center St Av fr 79 Center to 260 French
 Central fr 35 Hammond to 76 Harlow
 Chapin fr Broadway e'y to Hillside Av
 Charles fr 170 Ohio to 351 Union
 Chase Rd fr Stillwater Av nr Veazle line s'y
 Chatham fr 88 Ohio to 285 Union
 Cherry fr Hamlin Av to Ash
 Chester Pl fr 24 Third to 23 Sanford
 Church La fr 298 Hancock to 20 Gridley
 Clark fr 133 Hammond to 38 Court
 Claw fr Savage to Wing
 Clinton Ct fr 20 Clinton to end Dole Ct
 Clinton fr 190 Hammond to 199 Union
 Clyde Rd ff Linden to Kenduskeag Av
 Colby fr 101 Harvard e'y to Dartmouth
 Columbia fr 64 Hammond to 139 Union
 Congress fr 153 Kenduskeag Av to 302 Bdwy
 Coombs fr 103 Forest Av to Parkview Av
 Cottage fr 320 Ohio to 450 Union
 Court fr 107 Hammond to 165 Ohio
 Court St Av fr 9 Court to Kenduskeag Stream
 Crestmont Rd fr 196 Webster Av to 289 Silver Rd
 Crosby fr 90 Thatcher to Hampden line
 Cross fr 77 Main to 66 Columbia
 Cumberland fr 43 Harlow to 176 Essex
 Curve fr 267 Harlow to 36 Market
 D fr Miller w'y to Hermon line
 Dartmouth fr 296 Mt Hope Av n'y
 David Rd fr Union ac Ohio to Finson Rd
 Davis Rd see David Rd
 Davis fr 317 Main to 110 First
 Dayton fr 60 Fremont to Jessie
 Daytona fr opp 348 Birch to Fern
 Dean fr 669 Hammond to 348 Fourteenth
 Dexter fr 63 Allen ne'y
 Dillingham fr 687 Main
 Division fr 35 Kenduskeag Av to 57 Jefferson
 Doane fr Hammond nr city limits to Miller



We Go Anywhere, Anyplace, Anytime



24 HOUR TOWING & WRECKING SERVICE

Snow Plowing

ATLAS TIRES - BATTERIES & ACCESSORIES

FUEL OILS

S & H GREEN STAMPS

RAY'S SERVICENTER

292 Harlow St.

Bangor

DAY PHONE

BANGOR 9168

NIGHTS

BANGOR 2-3977

- Dodge fr 173 Fourteenth to Fifteenth
 Dole Ct fr 183 Union to end Clinton Ct
 Downing Rd fr Union sw'ly to Fuller Rd
 Drummond fr 39 Bower to 50 Nelson
 Dunning Blvd fr 804 Union w'ly
 Dutton fr Main se'ly & nw'ly to Bass Pk
 Earl Av fr 424 Bdwy
 East fr 698 Hammond to 43 Webster Av
 E Broadway fr Alden to Lancaster Av
 E Summer fr 303 State to 400 Hancock
 Eaton Pl fr 69 Fourth to 56 Fifth
 Eddyway fr 576 Union to 19 Hannibal
 Egery fr State opp water works
 Eighth fr 410 Union sw'ly
 Elizabeth Av fr 8 Webster Av N to 440 Union
 Elm fr 124 Somerset to 44 Milford
 Emerson fr 51 Main to MC RR
 Enfield fr Mt Hope Av s'ly bey Angela
 Essex fr 158 Hancock to Orono line
 Essex St Ct fr Hancock s'ly
 Evans fr jet School & Hillside Av n'ly to bey Hobart
 Everett fr 129 Ohio to 2 Nelson
 Exchange fr Union Sta to 31 State
 Fairfax fr 271 Fourteenth nw'ly bey Wilson Av
 Fairmount Pk E fr 75 Royal Rd to 98 Norway Rd
 Fairmount Pk W fr 23 Royal Rd to opp 57 Norway Rd
 Falvey fr 574 Broadway to Thornton Rd
 Farm Rd fr Main at city farm
 Far Vue Av fr 767 Hammond to 70 Hersey Av
 Fern fr 308 State to Hamlin Av
 Field fr 29 Warwick to 20 Princeto
 Fifteenth fr 464 Ohio to Allen
 Fifth fr 324 Hammond to Vine
 Fillmore fr Buswell nw'ly to Dow AFB & se'ly
 Finson Rd fr Ohio bey Griffin Rd to Six Mile Falls
 First fr 132 Union to Davis
 Ford fr Westland Av s'ly to Dunning Blvd
 Forest Av fr 188 State to bey Milford
 Fountain fr 22 Jefferson to 76 Poplar
 Fourteenth fr 412 Ohio to 723 Hammond
 Fourth fr 282 Union to 117 Parker
 Fourth St Pl fr 18 Fourth s'ly
 Fowler Av fr 536 Bdwy to 58 Warwick
 Frances fr 23 Manners Av to 112 Fourteenth
 Franklin fr 53 Hammond to 11 Harlow
 Frazier fr 46 Boyd to 12 Church La
 Fremont Ct fr 38 Fremont to opp 15 Grace Ct
 Fremont fr 319 Ohio to 9 Dayton
 French fr 54 Wash to 406 Bdwy
 French St Ext (same as N French)
 Front fr 2 Union to 68 Railroad
 Fruit fr 344 State to 181 Mt Hope Av
 Garfield Av fr Allen ne'ly to Sunset Dr
 Garland fr 127 Center to bey 40 Summit Av
 George fr 118 Ohio to 321 Union
 Gilbert fr Essex e'ly to Walton
 Gilman Rd fr Stillwater Av n'ly
 Grace Ct fr 36 Jessie to 37 Kosuth
 Graham Av fr 25 Boutelle Rd to Silver Rd
 Grant fr 66 Congress to 20 Poplar
 Gray cont Nason Av
 Greeley fr Outer Bdwy w'ly to Kenduskeag Riv
 Green fr Plum n'ly to Stacy Av
 Gridley fr 49 Newbury to 17 Church La
 Griffin Rd fr Kenduskeag Av opp Strickland Rd to Union

CONCRETE READY-MIXED, INC.

**MIXED TO YOUR SPECIFICATIONS &
DELIVERED READY TO USE**



**HIGH DISCHARGE MIXERS TO
CHEAPEN YOUR HANDLING COST**

C. M. PAGE CO.

INCORPORATED

**WASHED SAND & GRAVEL
CRUSHED STONE**

MARGIN ST.

ORONO

Tel. ORONO 6-2194

FINSON RD.

BANGOR

Tel. BANGOR 7510

- Grove fr 148 State to 21 Milford
 Grove St Ct fr 226 Grove w'ly
 Hamlin Av fr 225 Stillwater Av
 e'ly to Green
 Hammond fr Kenduskeag Riv
 to Hermon line
 Hancock fr Kenduskeag Riv to
 beg Spruce
 Hannibal fr 146 Fourteenth w'ly
 to Fifteenth
 Harlow Ct fr 246 Harlow to
 Kenduskeag Riv
 Harlow fr 30 State to jct Ken-
 duskeag Av & Valley Av
 Harrison (now Lee)
 Hathorn Av fr 70 Webster Av
 to Seventh
 Harvard fr Mt Hope Av nr cor
 Howard n'ly
 Hayward Rd fr 93 W Bdwy
 nw'ly
 Haymarket Sq fr Short & Pic-
 kering Sq to Independent
 Haynes Ct fr 176 Harlow to
 Kenduskeag Riv
 Hayward fr 19 Pond to 24 W
 Bdwy
 Hazel fr 256 Hancock to 191
 York
 Hellier fr 4 Parker to 45 Wal-
 ter
 Henry fr 497 Bdwy
 Hersey Av fr 359 Fourteenth
 n'ly
 Hewey fr 250 Buck to Bridg-
 ham
 Hickory fr Ash n'ly
 High fr 186 Hammond to 149
 Union
 Highland Av fr 134 Ohio to 76
 Cottage
 Highland Ct fr 42 Highland Av
 to 367 Union
 Highland La fr 14 Highland Av
 w'ly
 Highland fr Summit Pk to 409
 Union
 Hildreth fr Hammond nr limits
 s'ly
 Hildreth N fr Hammond nr
 Hermon line n'ly
 Hillside Av fr School n'ly bey
 Hobart
 Hobart fr Broadway e'ly to
 Hillside Av
 Hodson fr 138 Main to 17 Short
 Hogan Rd fr State bey water
 works to Stillwater Av opp
 Kittredge Rd
 Holey fr Hobart s'ly to bey
 Pleasant Av
 Holland fr 357 Ohio to Ken-
 duskeag Stream
 Holland fr 357 Ohio to Valley
 Av
 Howa'd La fr 34 Cumberland
 nw'ly
 Howard fr 434 State to 289 Mt
 Hope Av
 Hubbard fr 42 March to 45 Cat-
 ell
 Hudson Rd fr Outer Bdwy at
 Glenburn line
 Hudson fr 78 Ohio to 265 Union
 Hutchinson fr 35 Seventeenth
 to 42 Carter
 Independent fr 51 Union to 168
 Broad
 Jackson fr 284 Ohio to 433
 Union
 James fr Ohio to Union
 Jefferson fr 81 Kenduskeag Av
 to 188 Center
 Jessie fr 49 Kossuth to Day-
 ton
 Jowett fr 91 Falvey to Naylor
 Katahdin fr 60 Fourteenth se'ly
 Kenduskeag Av fr 355 Harlow
 to Bdwy
 Kenduskeag Mall fr State
 (Kenduskeag Bridge) to 54
 Central
 Kineo fr 40 Fourteenth se'ly
 Kittredge Rd fr Stillwater Av
 opp Hogan Rd ne'ly
 Knox Av fr Sherman Av w'ly
 to Blanchard
 Kossuth fr 337 Ohio n'ly to
 Valley Av
 Lafayette fr 72 Grant to 123
 Fountain
 Lancaster Av fr N French to
 656 Essex
 Lane fr 41 Allen ne'ly
 Larkin fr 447 Main to Seventh
 Laurel fr jct Liberty & Hill-
 side Av n'ly to bey Hobart
 Lee fr 136 Kenduskeag Av
 Leighton fr 36 Jefferson to 60
 Poplar

SOUTH LINCOLN NURSING HOME

STATE LICENSED



**CARING FOR
PENSIONERS - AGED - INVALIDS
CHRONICS - CONVALESCENTS**

CAROLYN BURKE, R. N.

**PLEASANT RURAL LOCALITY
WITH HOMEY ATMOSPHERE**

Registered Nurse on Duty 24 Hours A Day
Home Cooking - Reasonable Rates

State Road

South Lincoln, Me.

SWift 4-6585

Lemist fr 36 Earle Av to Fowler Av e'ly
 Leonard fr Carmen Av to Nelson Av
 Liberty fr Broadway e'ly to Hillside Av
 Lincoln fr MC RR to 96 Webster Av
 Linden fr 368 Center to Kenduskeag Av
 Lois fr Westland nw'ly
 Machias Blvd fr 152 Elizabeth Av to 68 Castine
 Madison fr 117 Kenduskeag Av to 224 Center
 Main fr 40 Hammond to Hampden line
 Manners Av fr 530 Union to 33 Rutland
 Maple fr 250 State to Stillwater Av
 March fr 581 Main to Hubbard
 Marilton fr Gilbert n'ly & s'ly
 Market fr 42 Cumberland to 41 Division
 Maxim Ct fr Third n'ly
 May fr 200 Main to 37 Front
 McKinley fr 242 Center to 49 Norfolk
 McLaughlin fr 25 Hersey to 121 Allen
 Meadowbrook Rd fr State nr Red Bridge n'ly
 Mercantile Sq fr 37 Broad to W Market Sq
 Merrimac fr 265 State to 362 Hancock
 Middle fr 109 Main to 50 High
 Mildred Av fr 852 Hammond to Gray
 Milford fr 334 Forest Av w'ly bey 439 Essex to Broadway
 Miller fr Hildreth w'ly to Hermon line & e'ly
 Montgomery fr 185 Kenduskeag Av to 292 Center
 Morse's Ct fr 214 Harlow to Kenduskeag Riv
 Mt Hope Av fr 219 Grove to State nr Veazie line
 Mtn View Av fr 140 Webster Av to bey Seventh
 Munroe fr 25 East to 21 West
 Nash fr 163 Falvey to Jowett
 Nason Av fr 830 Hammond to Gray

Naylor fr Roger to Thornton Rd
 Nelson fr 60 Everett to Valley Av
 New York St fr 235 Webster Av
 Newbury fr 231 State to 324 ancock
 Newton fr 32 Spring to 39 Cumberland
 Norfolk fr 48 Jefferson to 36 Poplar
 North fr 596 Hammond to 46 West
 N French fr 30 Henry n'ly to Lancaster Av
 N High fr 120 Hammond to 34 High
 N Park fr 417 French to 334 Pine
 Norway Rd fr 776 Hammond to bey Seventh
 Nowell Rd fr 79 Linden
 Nut fr 27 Boyd to 25 Hazel
 Oak fr 100 Wash to 93 York
 Odlin Rd fr Hammond bey Dow Field to Hermon line
 Ohio fr 187 Hammond to Glenburn line
 Olive Hgts fr 60 Olive to MC RR
 Olive fr 22 Thatcher to Hampden line
 Opal fr Fern e'ly & s'ly to Plum
 Otis fr 362 State n'ly
 Otis St Ext (cont of Otis to Stillwater Pk)
 Palm fr 210 State to 183 Stillwater Av
 Park fr 34 State to 61 Center
 Park Row fr Fern to Hickory
 Parker fr Main to Fifth
 Parkview Av fr 232 State to 189 Stillwater Av
 Patrick fr 206 Hancock to 153 York
 Patten fr 377 Main to 168 Third
 Pearl fr 426 Hancock to Plum
 Pearl St Ext (cont of Pearl to Stillwater Pk)
 Pendergast La fr Fourth w'ly
 Penobscot Sq fr 15 Park
 Penobscot fr 115 Park to 100 Essex
 Perkins fr 619 Hammond to 376 Fourteenth

BEMIS EXPRESS, INC.**DAILY SERVICE BETWEEN**

**BANGOR - LINCOLN - MATTAWAMKEAG - MILLINOCKET
 SHERMAN - PATTEN - BUCKSPORT - CASTINE
 BROOKSVILLE - SEDGWICK - BROOKLIN
 SOUTH BLUE HILL - BLUE HILL - EAST BLUE HILL
 & SURRY & INTERMEDIATE POINTS**

35 Market St.**Bangor****Dial Bangor 5697****219 Penobscot Av.****Millinocket****Dial Park 3-5211**

Pershing fr Westland Av to
 Dunning Blvd
 Philip fr 190 Falvey w'ly
 Pickering Sq fr 39 Broad to end
 of Haymarket Sq
 Pier fr 484 Hammond to 103
 Fifth
 Pine fr 50 Wash to N Park &
 Stillwater Av
 Plaisted fr 739 Hammond to 50
 Hersey Av
 Pleasant Av fr Broadway w'ly
 Pleasant fr 53 May to 56 Rail-
 road St
 Pleasant View Av fr 83 Poplar
 to nr Fowler
 Plum fr Pearl to Green
 Pond fr 320 Union to 201 Cedar
 Poplar fr 404 Center w'ly
 Post Office Sq bet Harlow &
 Park
 Prentiss fr 26 Division to 19
 Jefferson
 Prince fr Broadway e'ly to Hill-
 side Av
 Princeton fr Earle Av to Fow-
 ler Av
 Prospect fr 60 Cente w'ly
 Pushaw Rd fr Finson Rd ac
 Bdwy to Glenburn line
 Railroad St fr 312 Main to 171
 Front
 Ralph fr 245 Fourteenth w'ly
 to Fifteenth
 Rice fr Hildreth e'ly
 Ricker La fr 184 York n'ly

Rio fr 70 Sidney to 79 Larkin
 Roger fr 124 Philip to Thorn-
 ton Rd
 Rollins Ct fr 226 Harlow to
 Kenduskeag Riv
 Root fr 181 Fourteenth
 Rowe fr 283 Main w'ly
 Royal Rd fr 726 Hammond to
 127 Webster Av
 Russell fr 41 Manners Av to 162
 Fourteenth
 Rutland fr 138 Thirteenth nw'ly
 St Michael's Ct fr 190 Hancock
 Salem Ct fr 245 State s'ly
 Sanford fr 184 Union to 196
 Warren
 Savage fr 42 Webster Av to
 Sixth
 School fr Broadway e'ly bey
 Hillside Av
 Second fr 156 Union to 45 Park-
 er
 Second St Av fr 33 Second w'ly
 Seventeenth fr Ohio opp Mt
 Pleasant cemetery to 695
 Union
 Seventh fr 443 Hammond to 290
 Silver Rd
 Severance fr Mt Hope Av nr
 cemetery
 Sherman fr Kenduskeag Av e'ly
 & n'ly bey Thornton Rd
 Short fr My to Pickering Sq
 Sibley Ct fr 192 Harlow to Ken-
 duskeag Riv
 Sidney fr 425 Main to 206 Third

Silver Rd fr 798 Hammond to
 bey Crestmont Rd
 Sixteenth fr 508 Ohio to 647
 Union
 Sixth fr 190 Cedar to 261 Lin-
 coln
 Smith fr 241 Ohio to 265 Ohio
 Somerset fr 61 Center to bey
 33 Parkview Av
 South fr 70 Summer to bey 42
 Pleasant
 S Park fr 73 Market to 266
 Pine
 Spaulding fr Westland s'ly to
 bey Bailey
 Spring fr 209 Harlow to 76
 Center
 Spruce fr 446 Hancock to 345
 State
 Stacy Av fr Stillwater Av e'ly
 to Green
 State fr Kenduskeag Bridge opp
 Hammond to Veazie line
 State St Av fr 221 State to 232
 York
 Stetson Sq fr 90 York to State
 Stillwater Av fr 333 Pine to
 Orono line
 Stone fr 20 Fourteenth se'ly
 Strickland Rd fr Kenduskeag
 Av opp Gdiffin Rd to Bdwy
 Sumac Pl fr 71 Falvey n'ly
 Summer fr 52 Union to 60 Rail-
 road St
 Summit Av fr 498 State to bey
 Garland
 Sunbury Av fr Kenduskeag Av
 e'ly to Bragg
 Sunset Dr fr Stillwater Av w'ly
 & sw'ly to Hammond
 Thatcher fr 711 Main to Web-
 ster Av
 Third fr 206 Union to 96 Buck
 Thirteenth fr 583 Hammond to
 508 Union
 Thornton Rd fr 41 Falvey n'ly
 & w'ly to Sherman Av
 Tyler Av fr 369 Ohio
 Union Pl fr 247 Union e'ly
 Union fr 1 Front to Hermon
 line

Valley Av fr jct Harlow &
 Kenduskeag Av n'ly to Ken-
 duskeag Av
 Vernon fr 510 Hammond to 28
 Hathorn Av
 Vine fr 197 Third n'ly to Fifth
 Walter fr 403 Main to 184 Third
 Walton fr Gilbert n'ly & s'ly
 Warren fr 102 Fifth to 123 Sec-
 ond
 Warwick fr 65 Earl Av n'ly
 Washington fr 148 Broad to 237
 Hancock
 Watchmaker fr Essex e'ly to
 Walton
 Water fr 106 Main to 117
 Broad
 Webster Av fr 554 Hammond
 Webster Av N fr 541 Hammond
 n'ly
 West fr 81 Webster to 660
 Hammond
 W Broadway fr 368 Union to
 opp 248 Silver Rd
 W Park fr 207 Center to 380
 French
 Westland Av fr 830 Union w'ly
 Westland fr 618 Ohio to 781
 Union
 Whitney fr 110 Kenduskeag Av
 to Kenduskeag Riv
 Wiley fr 356 Ohio to 481 Union
 Williams fr 47 Sixth to 28
 Seventh
 Willow fr 51 Market to 140 Cen-
 ter
 Wilson Av fr Fairfax Av ne'ly
 Wing fr 12 Webster Av to Sixth
 Wingate Ct fr 270 State
 Winter fr 293 Ohio to Valley
 Av
 Wood fr 233 Fourteenth w'ly to
 Fifteenth
 Woodbury fr 55 Hersey Av to
 162 Allen
 Woodland Rd fr Olive nr
 Thatcher
 Yale fr 297 Mt Hope nr How-
 ard n'ly
 York fr Kenduskeag Riv to 33
 Newbury
 Young fr State nr Veazie line

BREWER INFORMATION

The city of Brewer, like Bangor, is a commercial and industrial community, but on a smaller scale. It is in Penobscot County on the Penobscot River opposite Bangor. Its chief manufactures include wood pulp, paper, and brick.

Brewer has had the same history as Bangor, insofar as colonial heritage, industrial evolution, and community life are concerned. It is also a terminal for tourists and vacationists seeking relaxation in the many out-door sports and pleasures to be had in "Maine, the Vacation Land."

The population of Brewer has grown very little in the past twenty years. In 1930, there were 6,329 people living in the city. In 1940, the census disclosed a figure of 6,510. The last census in 1950 saw the total rise to 6,817.

BREWER PUBLIC SCHOOLS

Dirigo Schl., 125 S. Main St.
 Excelsior Schl., 31 Chamberlain St.
 High Schl., 5 Somerset St.
 Pendleton St. Schl., Pendleton St.

Sargent Schl., 380 S. Main St.
 State St. Schl., 131 State St.
 Washington St. Schl., Washington St.

BREWER CHURCHES

Bangor Gospel Tabernacle, 26 N. Main St.
 Calvary Baptist Church, 61 State St.
 First Congregational Church, 35 Church St.
 First Methodist Church, 40 S. Main St.
 St. Joseph's Roman Catholic Church, 21 Holyoke St.
 St. Theresa's Roman Catholic Church, 425 S Main, S. Brewer
 Second Congregational Church, 607 S. Main St., S. Brewer
 Seventh Day Adventist Church, 143 N. Main St.



BIT OF WISDOM

In these days its hard to tell whether a person is walking to reduce or reduced to walking.

Flattery is having somebody else tell us the nice things we have always thought about ourselves.

BREWER STREETS

Abbott fr 310 S Main e'ly
 Allen Rd fr 366 N Main to Prospect Av
 Ayer fr 425 S Main w'ly
 Ayer's Ct fr bet 10 & 12 Brimmer e'ly
 Bangor fr 33 Pendleton to 1 Cross
 Bartlett Av fr 455 Wilson
 Betton fr 135 Penobscot to 200 N Main
 Bissell Ct fr 186 Center e'ly
 Blake fr 233 Wilson w'ly
 Brewer fr 540 S Main to 116 Elm
 Brimmer Ct fr 30 Brimmer e'ly
 Brimmer Sq jct N Main, S Main & Wilson
 Brimmer fr 82 S Main to MC RR
 Brook fr 186 State e'ly
 Burr fr 150 S Main s'ly
 Cedar fr 232 Center to 93 State
 Center fr 203 Penobscot s'ly
 Central Av fr 134 Elm n'ly bey Pleasant Av
 Century fr 455 S Main e'ly
 Chamberlain fr 17 Prospect to 299 Wilson
 Chambers fr bet 471 & 473 S Main w'ly
 Chapman fr 413 N Main s'ly
 Church fr 3 Penobscot ac N Main se'ly
 Clarke Av fr Elm e'ly bey Pleasant Av
 Cobb fr Central Av bey Russell to & bey Glenwood Av
 Cove fr 595 S Main to Penobscot River
 Cross fr 3 Bangor to Penobscot Av
 Day Rd fr 1089 N Main to Holden town line
 Day's Ct fr 12 DeRusha La
 DeRusha La fr 504 & 506 S Main e'ly
 Doyle Ct fr Spring s'ly
 East Rd fr N Main n'ly to North Rd
 E Summer fr 106 Union to 195 Center

Eastern Av fr 172 State to Holden town line
 Elm fr 588 S Main to Wiswell Rd
 Elmwood fr bet 364 & 368 S Main
 First fr 35 Century to 31 King's Ct
 Fling fr 183 Wilson to 32 Spring
 Forest Av fr Elm bey jct Brewer & Elm to & bey Pleasant Av
 Garfield Av fr end Roosevelt Av n'ly
 Getchell fr bet 142 & 144 S Main s'ly
 Gilmore fr 392 N Main to Penobscot River
 Glenwood Av fr opp 136½ Elm to Pleasant Av
 Glidden fr 391 Wilson w'ly
 Goupee fr 45 Brewer w'ly
 Green Pt Rd fr beg Ellsworth Rd to Wiswell Rd
 Grove fr 340 S Main s'ly
 Halet fr Clarke Av w'ly (proposed, not layed out)
 Hardy fr 135 S Main to Penobscot River
 Harlow fr 343 N Main to Washington
 Harriman La fr 562 S Main
 Harris fr 437 S Main w'ly
 High fr 9 Burr to Oak Hill cemetery
 Highland fr 272 Wilson to 163 State
 Holyoke Sq fr 103 Center to 216 N Main
 Holyoke fr 3 Prospect s'ly bey Wash
 Houston La fr 1122 N Main
 Howard fr 52 Parker to 183 Center
 James fr 398 N Main n'ly
 Jefferson fr 74 Silk to Madison Av
 Jordan fr bet 200 Center & MC RR to 63 State
 King's Ct fr 486 S Main e'ly
 Lambert Rd fr Eastern Av ac Day Rd to Eddington town line

HENRY N. HODSDON

All Kinds Of Used Cars
Reasonable Prices

COMPLETE AMOCO SERVICE

GENERAL REPAIRING

TRUCKS - CARS - BUSES

Ellsworth Road, R. F. D. 5

Brewer, Maine

Tel. Bangor 9797

Lincoln fr 82 Silk to bey Parkway N
Madison Av fr Washington s'ly bey Lincoln
Mann's Ct fr bet 376 & 378 S Main
Maple fr 130 S Main to MC RR
Middle Ct fr 20 Brimmer e'ly Mill fr 51 Elm s'ly to Orrington town line
North Rd fr West Rd e'ly to East Rd
N Main fr 19 Wilson n'ly to Eddington town line
Oak fr 493 S Main w'ly
Parker fr 15 N Main to 268 Wilson
Parkway N fr N Main to Eastern Av
Patten Ct fr 404 S Main to MC RR
Pendleton fr 390 S Main s'ly bey MC RR
Penobscot Av cont of Staples to Pendleton

Penobscot Sq fr jct Penobscot & Center to 11 State
Penobscot fr Church to 29 Center
Penobscot Ter fr 516 to 530 N Main
Pierce Rd fr Ellsworth Rd to Eastern Av
Pleasant Av fr end of Glenwood Av e'ly to bey Clarke Av
Prospect Av fr end of Allen Rd n'ly to Gilmore
Prospect fr 2 Holyoke n'ly
Raymond fr Brewer s'ly
Rooney fr Burr s'ly
Roosevelt Av fr 658 S Main e'ly
Russell fr before Carr to & bey Clarke Av
School fr 4 S Main to 117 Fling
Silk fr N Main e'ly to Lincoln
Somerset fr 120 Parker to 113 State
South Rd fr West Rd e'ly to East Rd

S Main fr bet 61 & 99 Wilson
to Orrington town line
Spring fr 110 S Main to MC RR
Spring St Ct fr 11 Spring w'ly
Staples fr Bangor to Penobscot
Av
State fr N Main n'ly to Pen-
obscot Riv & s'ly to Wilson
Stone fr 604 S Main to 23 Elm
Summer fr bet 176 & 178 Wil-
son to 111 Union
Tibbetts fr 442 S Main s'ly
Union fr nr Penobscot River ac
61 N Main to MC RR

Washington fr 216 Center e'ly
West Rd fr N Main w'ly to
North Rd
Whiting Hill on Ellsworth Rd
nr Holden town line
Wilson Av fr 225 & 227 Wilson
s'ly
Wilson fr Penobscot River to
Ellsworth Rd
Winter fr 33 Maple to Oak Hill
cemetery
Wiswell Rd cont of Elm to
Holden town line



ELLSWORTH STREETS

Argonne fr Forest Av n'ly to
Western Av
Bayview Av fr Church n'ly to
Park
Beal's Av fr High (Rte 1) w'ly
& n'ly to E Main
Birch Av fr State ne'ly to bey
Fox
Central fr State w'ly to Royal
Chapel fr Court (Rte 1A)
ne'ly to Liberty
Church fr State e'ly to bey
Bayview Av
Court (Rte 1A) fr W Main to
city line
Cross fr W Main n'ly to Court
(Rte 1A)
Davis fr Oak (Rte 1) ne'ly to
Fox
Dean fr High (Rte 1) sw'ly to
to Water
E Main fr jct Oak & High
(Rte 1) e'ly to city line
E Maple fr High (Rte 1) w'ly
to Water
Elm fr High (Rte 1) w'ly to
Hancock
Fairground Rd fr E Main s'ly
to DE
Fifth fr State w'ly to Pond Av
Forest Av fr State (Rte 1)
w'ly to Shore Rd
Fourth fr State to Shore Rd
Fox fr State n'ly to Davis

Franklin fr Water n'ly to City
Hall
Garden fr Park n'ly to Birch Av
Grant fr W Main to city line
Hancock fr Main s'ly to Dean
High (Rte 1) fr jct of Main
& E Main to city line
Lake's La fr State (Rte 1)
Laurel fr W Main se'ly to
bey South
Lejok fr Forest Av s'ly &
sw'ly to Fourth
Liberty fr Grant w'ly to
Chapel
Lincoln fr Oak (Rte 1) e'ly to
Bayview Av
Mae fr Third s'ly to Sterling
Main fr jct of High & Oak
(Rte 1) to Union Riv
McKenzie Av fr E Main n'ly
to Union
Memorial Rd fr Forest Av s'ly
Mill fr State (Rte 1) to Shore
Rd
Oak La fr Pine s'ly to Elm
Oak (Rte 1) fr jct of Main &
E Main n'ly to State
Park fr School e'ly to Bayview
Av
Pine fr High (Rte 1) w'ly to
Water
Pleasant fr Court (Rte 1A)
ne'ly to DE
Pond Av fr Fourth n'ly to
Fifth

Route 1 see State, Oak & High
 Route 1A see Court
 Route 3 fr Rte 1 to city line
 Route 172 see Main, E Main & W Main
 Royal fr Central n'ly to Sterling
 School fr Main to State
 Shore Rd fr jct of Forest Av & Fourth to Mill
 South fr W Main sw'ly to bey Laurel
 Spring fr Park n'ly to Birch Av
 Spruce fr High (Rte 1) w'ly to Hancock
 State fr Main to city line

Sterling fr State w'ly to jct of Mae & Royal
 Third fr State w'ly to bey Wood
 Union fr E Main ne'ly to city line
 Washington fr High (Rte 1) w'ly to Water
 Water fr Main s'ly to city line
 Western Av fr State (Rte 1) w'ly to Argonne
 W Main cont of Main fr Union Riv to city line
 W Maple fr W Main s'ly to bey Laurel
 Willow fr Grant w'ly to Chapel
 Young's Av fr Chapel e'ly to DE



HAMPDEN STREETS

Bogg Rd fr Shaw Hill Rd
 Cannan Rd fr Meadow Rd
 Carmel Winterport Rd fr Winterport line nw'ly to Newburg line
 Coldbrook Rd fr U S Rte 1 nw'ly to Bangor line
 Cottage fr U S Rte 1 se'ly
 Eliot fr U S Rte 1
 Ellingwood Cor Rd fr Kennebec Rd sw'ly to Winterport line
 Emerson Mill Rd fr Manning Mill Rd ne'ly to Bangor line
 Kennebec Rd fr U S Rte 1 sw'ly to Newburg line
 Manning Mill Rd fr U S Rte 202-State Rte 9 to Bangor line
 Mayo Rd fr U S Rte 202-State Rte 9 s'ly to Kennebec Rd
 Meadow Rd fr Kennebec Rd to Carmel Winterport Rd
 Miller Rd fr U S Rte 202-State Rte 9 n'ly to Bogg Rd
 Monroe see Ellingwood Cor Rd
 Odlin Rd fr Coldbrook Rd ne'ly to Bangor line
 Old County Rd fr U S Rte 1 ar to U S Rte 1
 Paper Mill Rd fr Coldbrook Rd w'ly to Emerson Mill Rd

Partridge Rd fr Ellingwood Cor Rd
 Patterson Rd fr U S Rte 202-State Rte 9 sw'ly to jct of Meadow Rd & Cannan Rd
 Piper Rd fr Carmel Winterport Rd to Newburg line
 Pleasant fr U S Rte 1
 Pond Rd fr Bogg Rd
 Sawyer Rd fr U S Rte 202-State Rte 9 se'ly to Meadow Rd
 School fr U S Rte 1 nw'ly to Old County Rd
 Shaw Hill Rd fr U S Rte 202-State Rte 9 nw'ly
 State Rte 9 fr Newburg line e'ly & ne'ly to Bangor line
 Summer fr U S Rte 1
 Sunset Av fr U S Rte 1
 Thomas Rd fr U S Rte 202-State Rte 9
 U S Rte 1 fr Winterport line ne'ly to Bangor line
 U S Rte 202 fr Newburg line e'ly & ne'ly to Bangor line
 Westbrook Ter fr Sunset Av ar to Sunset Av
 Winterport Rd fr Kennebec Rd s'ly to Winterport line

WHEN VISITING A



OPEN DAY

THE YEAR R

WE SPECIALIZE
PRIVATE DINNER PAR

Featu

REGULAR FULL
LIGHT L

Serving Our Famous Ice

Open Daily 11 A

PORTLAND ROAD

DIAL

AUBURN STOP AT



HOWARD
JOHNSON'S

E IN SERVING
TIES AND BANQUETS

uring

COURSE MEALS
UNCHES

e Cream In 28 Flavors
A.M. to 9 P.M.

4-7671

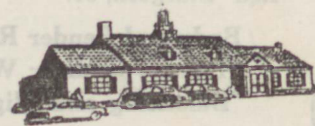
AUBURN

WHEN VISITING AUBURN STOP AT



OPEN DAILY

THE YEAR ROUND



HOWARD
Johnson's

WE SPECIALIZE IN SERVING
PRIVATE DINNER PARTIES AND BANQUETS

Featuring

REGULAR FULL COURSE MEALS
LIGHT LUNCHESES

Serving Our Famous Ice Cream In 28 Flavors

Open Daily 11 A.M. to 9 P.M.

PORTLAND ROAD

DIAL 4-7671

AUBURN

AUBURN STOP AT



HOWARD
JOHNSON'S

E IN SERVING
TIES AND BANQUETS

ring

COURSE MEALS
UNCHES

e Cream In 28 Flavors

A.M. to 9 P.M.

4-7671

AUBURN

OLD TOWN BODY SHOP

"Red" Sturgeon, Jr.



**Body and Fender Repairs
Bean Visualizer Wheel
Balancing and Aligning**

Call Old Town 7-2400

324 N. Main St.

Old Town

OLD TOWN INFORMATION

Old Town is a city located directly on an island in the Penobscot River in east central Maine, about 11 miles northnortheast of Bangor. It is situated right on U. S. Route 2, which heads for the Canadian border.

Incorporated as a town in 1840, Old Town was established as a city on March 30, 1891. It is well known for its manufacturing products of paper pulp, canvas, woolens, canoes and wood products. Located in Old Town is a Penobscot Indian Reservation. These are the last descendents of the great Penobscot tribe.

The population for Old Town in 1950 was 8,261 or an increase of over 600 since 1940.

OLD TOWN PUBLIC SCHOOLS

Great Works Schl., Main St.
Helen Hunt Schl., S. Brunswick St.
Herbert Gray Schl., Stillwater Av.

High Schl., Stillwater Av.
Jefferson St. Schl., Jefferson St.
Junior High Schl., S. Brunswick St.
Stillwater Schl., Bennoch Rd.

OLD TOWN CHURCHES

Baptist Church, Middle St.
Congregational Church, Center St.
Jewish Synagogue, Stillwater Av.
Methodist Church, Brunswick St.

FOR AIR TRAFFIC & CAA RADIO
Call Old Town 7-2363



Central Maine
FLYING SERVICE, INC.

AIRCRAFT REPAIRS & RELICENSING

Distributor For

PIPER AIRCRAFT

Hunting & Fishing Parties A Specialty

AIRTAXI

U. S. & CANADA

LAND & SEAPLANE SERVICE

AIR AMBULANCE

SINGLE & TWIN ENGINE

CAA APPROVED FLIGHT SCHOOL

OLD TOWN 7-3320

Gilman Falls Rd.

Old Town, Me.

"4 PLACE TWIN PIPER APACHE"

ROY BROS.



Distributors of RICHFIELD GASOLINE AND PRODUCTS

Gates Tires and Batteries

Automobile Accessories - Electrical Appliances
Bottled Gas - Dead River Gas
General Auto Repairing

DIAL 7-4742

185 S. Main St.

Old Town, Me.

St. Ann's Catholic Church, Indian Island
St. James Episcopal Church, Center St.
St. Joseph's Catholic Church, Main St.
St. Mary's Catholic Church, Main St.
Universalist Church, Main St.



OLD TOWN STREETS

Abbott fr Stillwater Av se'ly
to Lincoln
Argyle Rd fr Bennoch Rd
Bennoch Rd fr Gilman Falls Av
to bey Stillwater Av
Bodwell fr Bosworth e'ly
Bosworth fr Center se'ly &
s'ly to Nadeau
Bowdoin fr Brunswick e'ly to
Main
Bradbury fr Oak s'ly to Per-
kins Av
Brunswick fr Fourth e'ly &
s'ly to Bowdoin

Burnham fr Main w'ly bey
Brunswick to Fourth
Carroll fr Main w'ly bey
Brunswick
Center fr over Milford line
sw'ly & w'ly to Stillwater Av
Chapman fr Bosworth ne'ly &
se'ly
Chester fr Main e'ly to Water
College Av fr Stillwater Av
Congress fr Water w'ly to jct
Brunswick & Prentiss
Cooper fr Main w'ly to Bruns-
wick

SHORETTE'S RESTAURANT

Specializing In

**STEAKS - CHOPS
SEA FOOD**

Featuring

**HOT PASTROMI & HOT CORN BEEF
SANDWICHES**

NEVER A PARKING PROBLEM

36 South Main St. Old Town, Me.

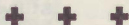
Call OLD TOWN 7-4481

Dartmouth fr Main w'ly bey
 Brunswick to Fourth
 Davis Ct fr Brunswick sw'ly
 to Fourth
 Davis fr Brunswick sw'ly to
 Veazie
 Eaton fr Main w'ly to Bruns-
 wick
 Elm fr Center nw'ly bey Mid-
 dle to Stillwater Av
 Elm St Ext cont of Elm & fr
 Gilman Falls Av
 Fifth fr Oak se'ly bey Summer
 to Perkins Av
 Fourth fr Dartmouth s'ly to
 Burnham
 Fourth fr Perkins Av n'ly &
 nw'ly bey Gilman Falls Av
 Franklin fr Free to Bennoch
 Rd
 Free fr Stillwater Av to
 Franklin
 French fr Union se'ly to Na-
 deau
 Front fr Center se'ly to bey
 Nadeau
 Garland fr Main e'ly
 Gary's La fr Front se'ly
 Gilman Falls Av fr jct Davis
 Ct & Brunswick nw'ly to
 Hudson line
 Gilmore fr jct Seventh & Oak
 n'ly to bey Center
 Glynn Av fr Jameson n'ly then
 w'ly
 Goldsmith's La fr Main w'ly
 Gray's La see Gary's La
 Harding fr Jefferson sw'ly to
 King
 Hayes fr Bosworth e'ly
 Heald fr River e'ly to Front
 High fr Stillwater Av s'ly to
 Middle
 Highland fr Main w'ly to
 Brunswick
 Hildreth fr Bosworth e'ly
 Hilliard fr Perkins Av s'ly to
 Prentiss
 Hillside fr Highland s'ly to
 Bowdoin
 Holland fr Main w'ly to Hill
 side
 Howard fr Center se'ly & s'ly
 to Bosworth

Jameson fr Main e'ly bey
 Glynn Av
 Jefferson fr Center se'ly to
 Perkins Av
 King fr Lincoln s'ly bey Hard-
 ing
 Kirkland Rd fr Bennoch Rd
 Lincoln fr King ne'ly bey Jeff-
 erson
 Main fr Brunswick s'ly to bey
 Portland
 Maple fr Stillwater Av se'ly
 Middle fr Main sw'ly to Elm
 Mill fr College Av
 Morris La fr Main to Richard
 Ct
 Nadeau fr Bosworth sw'ly to
 Front
 N Brunswick see Brunswick
 N Fourth see Fourth
 N Main see Main
 Oak fr Jefferson e'ly to Bruns-
 wick
 Park fr Main w'ly to Fourth
 Perkins Av fr Jefferson ne'ly
 to Brunswick
 Pine fr Main w'ly bey Bruns-
 wick
 Portland fr Main e'ly
 Prentiss fr Hilliard e'ly to jct
 Brunswick & Congress
 Richard Ct fr Morris La to
 Pine
 River fr Front sw'ly & s'ly to
 Heald
 Sawyer fr Main e'ly to Water
 School fr Jameson s'ly to Port-
 land
 Seventh fr Perkins Av n'ly to
 jct Gilmore & Center
 Shirley fr Middle se'ly to Cen-
 ter
 Sixth fr Perkins Av n'ly to jct
 Center & Somerset
 Somerset fr jct Sixth & Oak
 n'ly to Middle
 S Brunswick see Brunswick
 S Main see Main
 Spring fr Stillwater Av
 Stillwater Av fr Main sw'ly to
 Stillwater line
 Summer fr Bradbury w'ly to
 Seventh

Union fr Hayes sw'ly to Front
 Veazie fr Middle nw'ly to Gil-
 man Falls Av
 Water fr Congress n'ly & nw'ly
 to Main

Willow fr Brunswick e'ly to
 Main
 Wilson fr King ne'ly bey Jeff-
 erson
 Wood fr Main sw'ly to Bruns-
 wick



ORONO PUBLIC SCHOOLS

Elementary Schl., Elementary
 School Rd.

High Schl., Main St.
 Webster Schl., N. Main St.

ORONO CHURCHES

Church of Universal Fellowship, Main St.
 Methodist Church, Oak St.
 St. Mary's Catholic Church, Main St.



ORONO STREETS

Allen Rd fr College Av to Park
 Arlot La fr Westwood Dr to
 Spencer
 Beach fr Pine to Mill
 Bennoch Rd fr Main opp Mill
 n'ly
 Bridge fr College Av s'ly to
 jct Main, Mill & Forest Av
 Broadway fr Water to bey
 Cedar
 Brook fr S Penobscot
 Cedar fr Bdwy
 Cedarwood Av fr Maplewood Av
 Chapel Rd fr College Av
 Charles fr College Av
 College Av fr Main to town line
 College Hgts fr College Rd
 College Rd see College Av
 Crosby fr Park to Penobscot
 Elm fr Pine s'ly to Cedar
 Elmwood Av fr Fernwood Av
 e'ly to Cedarwood Av
 Essex fr Bangor line to Pushaw
 Pond
 Fellows fr Harris Rd to Allen
 Rd
 Fernald Rd fr Park to Allen Rd

Fernwood Av fr Gilbert to
 Mainewood Av
 Forest Av fr jct Main & Ben-
 noch Rd w'ly
 Gilbert fr Main w'ly bey Pine-
 wood
 Glenwood fr Gilbert n'ly to
 Mainewood Av
 Grove fr Park
 Hamlin fr Main s'ly to Island
 Av
 Harris Rd fr Allen Rd
 Harrison Av fr Main to Margin
 Hill fr N Main
 Island Av fr Main
 James fr Middle to Water
 Juniper fr Main to Myrtle
 Kell fr College Av
 Kelley Rd fr Main
 Ledge Hill fr College Av
 Main fr College Av to Bangor
 line
 Mainewood Av fr Cedarwood
 Av to bey Pinewood
 Maplewood Av fr Main to Ce-
 darwood Av
 Margin fr Harrison Av sw'ly
 bey S Penobscot

Mayo fr Hamlin
 Middle fr Pleasant to Bdwy
 Mill fr Main to the river
 Myrtle fr Pine
 N Main fr Bridge ne'ly
 Oak fr Bridge e'ly to Summer
 Park La fr Park
 Park fr College Av
 Penobscot fr N Main
 Peters fr N Main
 Pierce fr N Main
 Pine fr Main to Bdwy
 Pinewood fr Gilbert ne'ly to
 Mainewood Av
 Pleasant fr Mill to Pine
 Pond fr N Main
 Riverdale fr College Av

School Dr fr Main to Westwood
 Dr
 School fr Pine to Middle
 S Penobscot fr Margin
 Spencer fr Main
 Spring fr Mill
 Spruce fr Elm
 Stillwater Av fr Forest Av
 Summer fr Mill
 Union fr S Penobscot
 University Pl fr College Av
 Water fr Mill se'ly to Broad-
 way
 Webster Rd fr Allen Rd
 Westwood Dr fr Main nw'ly
 bey School Dr



VEAZIE INFORMATION

Veazie is located four miles north of Bangor on the Penobscot River about halfway between Bangor and Old Town. It was incorporated on March 26, 1853 and named after General Samuel Veazie. Veazie was formerly the seventh ward of Bangor. Located in the town are two large Bangor Hydro Plants which supply the electric power for this and many outlying areas.

VEAZIE PUBLIC SCHOOL

John Graham Schl., Olive St.

VEAZIE STREETS

Chase Rd fr State to Stillwater
 Av facing School St
 Flagg fr Olive to Main Rd
 crossing Lemon & Green
 Green fr Main Rd e'ly ac
 Flagg, Maple & Judson
 Grove fr Oak to School
 Hobson Av fr State e'ly facing
 Fairview cemetery
 Judson fr Olive to Lemon
 Lemon fr Judson & Green
 Main Rd fr State@bridge to
 State (RR crossing)
 Main see Main Rd
 Maple fr Olive to Green

May fr State e'ly
 Merrick fr School bet Thomp-
 son Rd & Summer
 Oak fr Olive to Grove
 Olive fr Main Rd to Oak
 River Rd fr Oak to Bangor
 Hydro Station
 Riverview fr State facing Mt
 Hope cemetery
 Rock fr Oak to bey Olive
 School fr State to Oak
 State fr Bangor line to Orono
 Summer fr School
 Thompson Rd fr School to
 Thompson Pt



"My luck changed since I bought U. S. Defense Bonds. Now, everything comes bigger and better to me!"

Fishing in Maine

There are several desirable species of gamefish in Maine and the state attracts large numbers of anglers annually. The preferred species are the landlocked salmon, the eastern brook trout, the brown trout and, to a lesser degree, the rainbow trout. The lake trout, or togue as it is known in Maine, exists in large numbers in most of the state's lakes and many ponds and streams, as well. There are two species of black bass, the largemouth and the smallmouth, but the latter is the most numerous and in some sections is so abundant that national authorities have termed Maine's smallmouth bass fishing the best in the country.

Bass are found from the coastal waters inland about as far as Houlton. The more famous togue waters are in the

(Continued on Next Page)

north, perhaps, but like the brook trout and salmon, the togue is found almost statewide. Brown trout have not invaded the northern lakes to any great extent but are found in many ponds and lakes from central Maine south to the coast. Rainbow trout are caught in the Kennebec river at Bingham and in a few other waters.

Maine has a club sponsored by the Maine Development Commission and to gain membership to this exclusive association an angler must take a gamefish of the following weight: Salmon (landlocked) 10 lbs; sea-run salmon 15 lbs; togue 15 lbs; bass, five pounds; brook trout six pounds; white perch three pounds. This will give a fisherman some idea of the huge fish found in inland waters. Along the coast there are many other monsters of the Atlantic, of course.



MAINE POPULATION FIGURES

The 1950 Census of the larger cities and towns of Maine:

State of Maine	913,774	Hallowell	3,404
Auburn	23,134	Houlton	8,377
Augusta	20,913	Lewiston	40,974
Bangor	31,558	Millinocket	5,890
Bath	10,644	Old Town	8,261
Belfast	5,960	Portland	77,634
Biddeford	20,836	Presque Isle	9,954
Brewer	6,862	Rockland	9,234
Brunswick	10,996	Rumford	9,954
Calais	4,589	Saco	10,324
Caribou	9,923	Sanford	15,177
Eastport	3,123	Skowhegan	7,422
Ellsworth	3,936	South Portland	21,866
Fort Fairfield	5,791	Waterville	18,287
Gardiner	6,649	Westbrook	12,284

Hunting in Maine

Maine has several species of game animals and birds to excite a hunter. Some 40,000 deer is the annual kill at present and the range of this species is statewide. A good population of moose exists in the state but this huge animal is protected by the law against hunters. Black bears, bobcats, foxes, racoons, rabbits and gray squirrels abound in most of the 16 counties.

Upland hunters may pursue woodcock, partridge, pheasants; and many species of waterfowl abound along the 2500-mile coast and also on inland lakes and rivers. Maine is one of two states having a split duck season, which means hunters may seek ducks early in the Fall, before the lakes freeze over, and again in the late Fall and early winter. At the latter time, many hunters go out after sea ducks on the Atlantic coast of Maine.

In the northern sections of Maine there is a huge, sprawling area of wild land. Some 17 million acres of woodland lie within the borders of the state. Thus, hunting pressure is comparatively light and there may be many places which never hear the sound of a gun, even in open season.

Deer and other game depend on food and habitat, exactly as human beings do. Maine has a good supply of natural game foods and the woods and waters of the state give ample habitat for the healthy game which awaits the hunter from October until late winter. The deer season ends Nov. 30 but rabbits may be shot until Spring and there is a continuous open season on bears and bobcats.

The American elm is one of Maine's largest and most graceful trees, and is of common occurrence throughout
(Continued on Next Page)

Other organizations which provide opportunity for student participation are: two bands, the men and women's glee clubs, the orchestra, vocal and instrumental ensembles, the Maine Masque Theatre, the Radio Guild, the Maine Debating Team and student publications such as a weekly newspaper and a junior yearbook.

The University has established an enviable record in the fields of agriculture, forestry and home economics. The curriculum in public management has been widely recognized as a significant advance in planned preparation for public service. Engineers from Maine are known the world round for their achievements. Teachers trained at the University are in great demand. The University's programs in research and service have also gained wide attention.

The University of Maine has fulfilled the established plan by creating a well-rounded program in the fields of agriculture, science, art, business, teaching and public



University of Maine

The University of Maine, one of the nation's great land-grant colleges, is located in the attractive town of Orono, in Penobscot County, about eight miles north-northeast of Bangor. The campus borders the Stillwater River, a branch of the Penobscot. Orono, with a population of 3634, is also well known for its wood products — pulp, paper, oars and paddles.

Established originally as the State Agriculture College, the institution opened in 1868 with 12 students and two faculty members. Now in its 90th academic year, the college has 3,000 students and 200 faculty members.

It is comprised of the Colleges of Agriculture, Arts and Sciences, and Technology, School of Education, and the Division of Graduate Study. The University has a modern library which contains over 240,000 books and pamphlets. It has well-equipped classrooms and laboratories, comfortable living accommodations, and art and science collections. There are extensive athletic facilities for men and women including one of the largest field houses in the country. Nearby are the University farms of approximately 900 acres and an experimental forest of 1,746 acres.



How To Eat Maine Lobster

1. **Twist off the claws.**
2. Crack each claw with a nutcracker, pliers, knife, hammer or what have you.
3. Separate the tail-piece from the body by arching the back until it cracks.
4. Bend back and break the flippers off the tail-piece.
5. Insert a fork where the flippers broke off and push.
6. Unhinge the back from the body. Don't forget that this contains the "tomalley", or liver of the lobster which turns green when it is cooked and which many persons consider the best eating of all.
7. Open the remaining part of the body by cracking apart sideways. There is some good meat in this section.
8. The small claws are excellent eating and may be placed in the mouth and the meat sucked out like sipping cider with a straw.

Trees of Maine

The State of Maine contains many thousands of acres of forests. Within these forests are numerous varieties of trees and plants, some more famous and popular than others. Three of the most famous of Maine's trees are:

SPECKLED ALDER

(*Alnus incana* L. Moench.)

Speckled alder is very common in Maine, usually growing in wet situations along the edges of brooks and in swamps. It sprouts very readily and is considered undesirable because it will come in on pasture land. It bears many small, round, one-seeded nutlets. It is used for jellies.

THE WOOD is heavy, hard, and close grained. It is used to some extent for handles and other articles.

AMERICAN ELM

(*Ulmus americana* L.)

The American elm is one of Maine's largest and most graceful trees, and is of common occurrence throughout the state. It prefers the rich bottom lands, the moist soil along the streams and low hills of rich soil.

The trunk often divides into numerous limbs which form a spreading round-topped head with graceful, drooping branches. It attains a height of sixty to seventy feet and a diameter of two to four feet.

THE BARK on the trunk is separated into broad ridges by deep fissures and is of an ashy-gray color.

THE LEAVES are alternate, two to five inches long, coarsely double toothed margins. The upper surface dark green and somewhat rough and having a one-sided base.

THE FLOWERS appear in April before the leaves.

THE FRUIT consists of a small winged seed which ripens about the last of May before the leaves have fully developed.

THE WOOD is rather coarse-grained, hard, heavy, strong, tough and hard to split. It is used for wheel hubs, baskets, flooring and cooperage.

Alder usually occurs as a shrub, rarely as a small tree. It is seldom more than two inches in diameter and twenty feet in height.

THE BARK is smooth, dark chocolate brown, and marked with white elongated spots.

THE LEAVES are two to three inches long, usually nearly oblong. The edges are unevenly toothed. The leaf stock is short and round.

THE FLOWERS are in catkins appearing in the fall and remaining till the following spring.

THE FRUIT is cone-shaped.

THE WOOD is not heavy nor hard, and this tree is not used for timber. The green wood discolors very rapidly on exposure to the air.

HAWTHORN

(Thorn Apple)

(Crataegus Spp.)

The Hawthorn occurs in Maine as a low spreading tree or shrub, rarely reaching a height of more than fifteen to eighteen feet. There are many species.

THE BARK is dark brown, somewhat scaly.

THE TWIGS are slender, rigid usually armed with long thorns. They form a compact crown due to their somewhat zigzag method of growth.

(Continued on Next Page)

THE LEAVES are ovate, toothed, somewhat lobed, thin and dark green. They are borne on slender petioles one and one-half to two and one-half inches long.

THE FLOWERS appear about the first of June in flat, showy white clusters.

THE FRUIT which is about three-fourths of an inch in diameter resembles a small apple. The flesh is thin and



Bangor-Brewer Bridge

Resident's of Eastern Maine's two largest cities gathered at the new Bangor-Brewer bridge on November 11, 1954 and dedicated the \$2½ million span.

The day marked one of the most significant steps of progress Eastern Maine has seen in many, many years. Shooting over 1406 feet across the Penobscot River the span is easing the travel in and out of the area. Existing industry in the state are benefiting by the bridge, and tourists are finding travel is much easier with the span. The businessman driving home during the rush hours finds that he is wasting less time waiting for creeping traffic to move.

When the Old Bon Ton Ferries were operating many years ago, it seemed that one of the captains remarked that someday a bridge would be built across the river on the same path that his boat took. Today the new bridge follows that path and motorists are paying a little more than a ferry fare to cross the river - - three cents.

It took almost a year and a half, a cost of about \$2½ million, tons and tons of cement, steel and other materials and unestimated man hours to complete the dream that had been buzzing around in the minds of many progressive leaders in the two benefited cities.

FACTS ABOUT MAINE

No state has a more varied topography than Maine. It is 320 miles long, 210 miles wide at its widest part, and has a total area of 33,040 square miles.

There are 9 other mountains in the state over 4,000 feet high: Abraham, Baldpate, Bigelow, Crocker, Horn, North Brother, Old Speak, Saddleback, and Sugar Loaf.

Aroostock, the county farthest north, contains 6,453 square miles, an area of more than that of Rhode Island and Connecticut combined.

The navy yard at Kittery is the center of naval submarine activities, and it has been designated as the building and repairing station for all submarines on the Atlantic coast.

Old Orchard Beach has one of the longest, hardest, smoothest stretches of beach on the north Atlantic coast.

Acadia National Park, on Mount Desert Island, contains 16,522 acres and includes Mount Cadillac, the highest elevation on the Atlantic coast.

Eastport is the most easterly city in the United States. It has a rise and fall of tide of 24 feet. Here is located the Quoddy Tidal Project, designed to harness this tremendous tide. The Federal Government has already expended large sums in construction of sea-dams and a "model village."

There are 5 large rivers: the Androscoggin, Kennebec, Penobscot, St. John, and St. Croix; and 5,147 streams and small rivers.

The average annual rainfall, evenly distributed, is 43.24 inches, which includes average depth of snow, equal to

(Continued On Next Page)

6.91 inches of rainfall. So evenly distributed is the rainfall that severe droughts or damaging storms are exceedingly rare. The large wooded areas and hills in the state are a source of protection from windstorms.

The highest elevation in the state is Mount Katahdin, 5,267 feet above sea level. It rises, an isolated, massive, gray, granite monolith, from the Central Maine Forest. Katahdin indeed is the monarch of an illimitable wilderness. It is said to be possible on a clear day, to see more land and water from the top of this mountain than from any other known point of land, as there are no other ranges on any side to cut off the view.

This giant of the east is the first spot in the United States to greet the morning sun. The greater part of the mountain, comprising 131,712 acres, has been contributed by former Governor Percival P. Baxter, as a State Park. This is known as Baxter State Park.

The 1950 census accredited Maine with a population of 913,774, an average of 27.6 persons per square mile. The State ranks 35th in population in the United States.

Maine has a direct coastline of nearly 250 miles, but so notched with bays and inlets that it has a tidal line of more than 2,400 miles, equal in length to one-half of the Atlantic coastline of the United States.

There are within the borders of the state 2,465 lakes and ponds ranging all the way in size from a small pond to the great Moosehead.

The state is divided into 16 counties, containing 21 cities, 412 towns, 53 plantations and 91 unorganized townships.

It is nearly as large as the other five New England States combined.

DRIVING SAFELY

Here are some of the more important rules, regulations and tips about driving that we should follow and obey. Whether we fall into the category of novice, average or expert, by obeying and following all safety rules of driving we can make motoring a happy, safe and pleasant experience for all Americans.

You must have a license to drive any type of motor vehicle. A person must, when driving, always carry this license. One cannot obtain a license if he is declared mentally or physically unsafe. If a license is lost or misplaced a duplicate one must be procured from the proper authorities.

For those wishing to obtain a motor vehicle license, most states have a fairly standard set of rules and regulations to follow in the process of procuring this license. An application must be made and you must study and pass a written or oral examination concerning all phases of motoring. A vision test is given and also an inspection is made of the car that is to be used in the driving test.

Your driving test usually consists of a combination of any of the following: Parking parallel, quick stops, backing, stop signs, traffic lights, turn about, approach to corner, stopping and starting on a grade and many other phases of motoring.

Always be sure to look both forward and backward before driving to be sure there are no cars coming. Always drive on the right except when passing or turning left. Never pass a school bus in either direction that is loading or discharging passengers unless the driver signals you on. You should not drive a vehicle on a highway faster than is reasonable or wise at any particular time or place, likewise do not drive while you are sleepy or very tired.

(Continued On Next Page)

Upon entering an intersection SLOW DOWN, so that you can see what is coming and be able to stop if necessary. Do not get caught out in the middle of any intersections. You must never drive too slowly so that you will interfere with other vehicles moving at normal speeds. At a right-of-way intersection do not insist upon your "rights" just for the sake of being in the right. Yield the right-of-way if it means an accident or that your safety and the safety of others is endangered.

You must closely watch and always obey the signals of a traffic police officer, even though his signals are contrary to those of rules posted. Certain rules of right-of-way should be followed: yield to the driver that enters first in intersection, driver on right of intersection proceeds when two cars enter at same time, a complete stop must be made when entering a through way intersection, when turning in an intersection yield to other cars, emergency vehicles always have right-of-way in intersections, pedestrians and school children have right-of-way everywhere, including intersections.

Your horn should be used only when you are passing another vehicle or in the case of an emergency warning to another vehicle or a pedestrian. Never follow the vehicle ahead too closely. This violation is probably the leading cause of accidents in all states. The faster you drive the greater the distance should be between the car ahead and you. A good rule to follow is allow one car length for every ten miles per hour of speed.

There are certain things for you to do in making any turns: prepare yourself for the turn ahead, and proceed into the proper lane as soon as possible, look around you to locate position of other cars and signal about 100 feet before the turn is made, slow down and make the turn at a proper speed, make the turn properly and always finish

your turn in the proper lane. For turning or stopping there are correct signals recognized everywhere by drivers: for the left turn the hand and arm are extended horizontally straight out, for the right turn the hand and arm are extended upward, for stopping or decreasing speed the hand and arm are extended downward.

Improperly parked vehicles can also cause accidents. **NEVER LEAVE A KEY IN YOUR PARKED VEHICLE.** When parked on a hill set the handbrake and leave the car in gear. Be sure that your front wheels are resting against the curb whether you are facing down the hill or up. You must never stop, stand or park your vehicle in any of the following unless necessary or ordered to do so by a police officer: a sidewalk, in front of a driveway, near a hydrant, on a pedestrian crosswalk, near a railroad crossing or near a fire station, near "no parking signs" and any other places that your common sense tells you not to park.

There are many conditions under which you must stop your car. Some of the more important conditions are: under orders from a traffic officer, where there are STOP signs, at the entrance of an intersection, for a red traffic light, when meeting or overtaking a school bus, etc.

Speeds should always be lower for night-time driving. You should drive at speeds that allow you to stop safely in the distance clearly seen ahead. There are certain things that should be done for after-dark motoring: headlights should be lowered, when approaching another car, following a car, driving on well-lighted streets, driving in the fog; avoid looking directly into lights; keep your headlights properly adjusted; keep windshield clean; watch for pedestrians and other obstructions in the road or gutter.

Never drive if you have been drinking. If you are found guilty of driving while under the influence you are liable for a suspension and a stiff penalty or both.

(Continued on Next Page)

Reckless driving is driving in such a manner that you show no regard for the safety of other persons or property. This could mean a suspension of your driver's license and a fine or both.

YOUR CAR

A good driver keeps his car in good shape as it is against the state laws to drive a car that is in such poor condition as to be dangerous to persons and property. Your motor vehicle must have two separate means of braking—by foot and hand. Your car must have two headlights and one tail-light. Some of the other equipment that you should have: a horn to be heard 200 feet away and used only when necessary for safety; a muffler to reduce noise and prevent the escaping of gases; mirrors so that the driver can see 200 feet to the rear; a windshield and windshield wipers in good order; tires should be in good condition and checked once a week; safety glass must be used wherever your car has glass; license plates must be displayed prominently in the front and rear; flares and fuses are required for certain other vehicles.

There are certain things that should not be carried on motor vehicles and are dangerous if done: a red light on the front is in violation of a law; a siren or bell or whistle must not be used; a muffler cut out; signs or stickers unless those authorized by law; more than one spot light or two fog lights; more than two fender or back-up lights; any device known as a "smoke screen"; any load extending beyond the fenders.

INSPECTION OF CAR

Your motor vehicle must always be in proper mechanical condition for your own protection and for the safety of others and for the protection of property. It is the duty of authorized officials to inspect vehicles whenever they have reason to believe that such vehicles are unsafe or do not have the equipment required by law.

DRIVERS AND PEDESTRIANS

Driver attitude has been found to be an important factor in traffic safety, and pedestrian attitude is equally important. Pedestrians should obey rules and regulations for their own protection. Every driver must use care at all times to avoid hitting any pedestrian. When you are a pedestrian: obey traffic signals, use only crosswalks when crossing, cross streets safely for yourself and for vehicles, use right half of crosswalks, use sidewalks, do not stand in roadway to signal a driver, look in both directions before crossing and wear white clothing when walking at night.

Remember these safe driving practices: never drive through a safety zone, never have more than three persons in the front seat, never drive closer than 500 feet behind a fire apparatus or drive over unprotected hose unless directed to do so, always drive down steep grades in second or in low gear, never put your brakes on suddenly when you have a flat tire or a blowout, use extreme care when you see a pedestrian with a white cane.



*Home
Private Hospital*

Mrs. Delina I. Gothrow, R. N.

Quiet Homelike Atmosphere

GOOD FOOD

61 OAK STREET

OLD TOWN MAINE

TEL. OLD TOWN 7-3665