

1909

# National Soldiers' Home for Disabled Volunteer Soldiers, Togus, Maine

Eastern Branch National Home of Disabled Volunteer Soldiers

Follow this and additional works at: [https://digicom.bpl.lib.me.us/books\\_pubs](https://digicom.bpl.lib.me.us/books_pubs)

---

## Recommended Citation

Eastern Branch National Home of Disabled Volunteer Soldiers, "National Soldiers' Home for Disabled Volunteer Soldiers, Togus, Maine" (1909). *Books and Publications*. 295.  
[https://digicom.bpl.lib.me.us/books\\_pubs/295](https://digicom.bpl.lib.me.us/books_pubs/295)

This Book is brought to you for free and open access by the Special Collections at Bangor Community: Digital Commons@bpl. It has been accepted for inclusion in Books and Publications by an authorized administrator of Bangor Community: Digital Commons@bpl. For more information, please contact [ccoombs@bpl.lib.me.us](mailto:ccoombs@bpl.lib.me.us).

*National home for disabled volunteer soldiers. Eastern branch*

EASTERN BRANCH

National Home

D. V. S.

MAINE



# NATIONAL SOLDIERS' HOME MAINE

---



THE Eastern Branch of the National Home for Disabled Volunteer Soldiers was established by act of Congress approved March 21st, 1866, on what was then known as the Togus Springs Estate, and the first member was admitted October 6th, 1866. It is located five miles to the eastward of the cities of Augusta, Hallowell and Gardiner; has an average membership of 2650 men; covers an area of 1894 acres, and is reached by the Lewiston, Augusta and Waterville Electric Railway from Augusta, and the Kennebec Central Railroad from Gardiner. Cost for land, buildings and permanent improvements, \$704,596.89.

CENTRAL, DAYTON, OHIO: Opened for use 1867. 578 acres. Cost, \$1,708,030.65 for land, buildings and permanent improvements. Membership: present, 4187; absent, 1476.

NORTHWESTERN, MILWAUKEE, WIS.: Opened for use 1867. 382 acres. Cost, \$759,932.13 for and, buildings and permanent improvements. Membership: present, 1954; absent, 495.

SOUTHERN, HAMPTON, VA.: Opened for use 1870. Leases 343 acres, owns 26 acres. Cost \$960,329.78 for land, buildings and permanent improvements. Membership: present, 2288; absent, 1168.

WESTERN, LEAVENWORTH, KAN.: Opened for use 1885. 640 acres. Cost, \$717,921.93 for buildings and permanent improvements; land was donated. Membership: present, 2400; absent, 1675.

PACIFIC, SANTA MONICA, CAL.: Opened for use 1888. 631 acres. Cost, \$736,395.35 for buildings and permanent improvements; land was donated. Membership: present, 1934; absent, 1410.

MARION, MARION, IND.: Opened for use 1890. 235 acres. Cost, \$912,865.93 for land, buildings and permanent improvements. Membership: present, 1686; absent, 675.

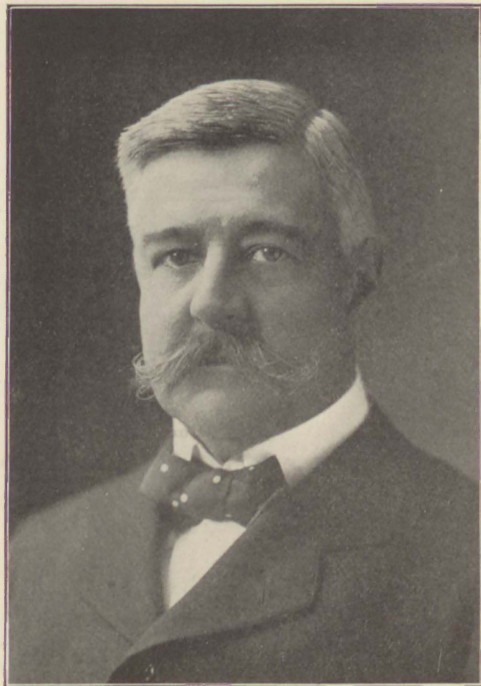
DANVILLE, DANVILLE, ILL.: Opened for use 1898. 324 acres. Cost, \$1,258,853.25 for land, buildings and permanent improvements. Membership: present, 2307; absent, 1089.

MOUNTAIN, JOHNSON CITY, TENN.: Opened for use 1903. 447 1-2 acres. Cost, \$1,766,996.43 for land, buildings and permanent improvements. Membership: present, 969; absent, 317.

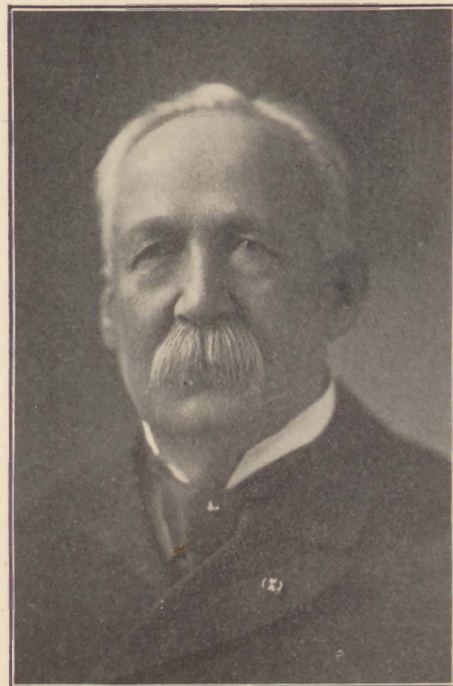
BATTLE MOUNTAIN SANITARIUM, HOT SPRINGS, SOUTH DAKOTA: 84 acres. Cost for land, buildings and permanent improvements, \$221,590.85.

PUBLISHED BY  
EASTERN BRANCH  
NATIONAL HOME  
D. V. S.

PHOTOGRAPHS AND PRINTING  
BY  
MAINE FARMER PUBLISHING COMPANY  
AUGUSTA - - MAINE  
1909



MAJOR JAMES W. WADSWORTH  
President Board of Managers



GENERAL JOSEPH S. SMITH  
Local Manager

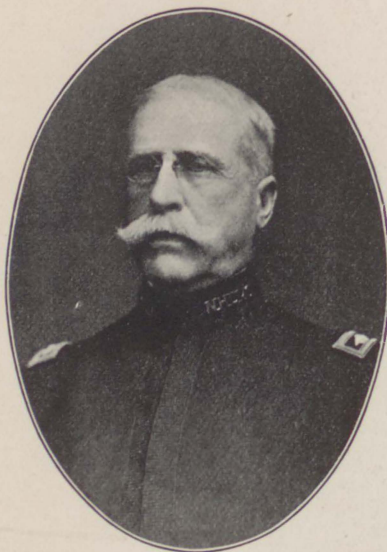




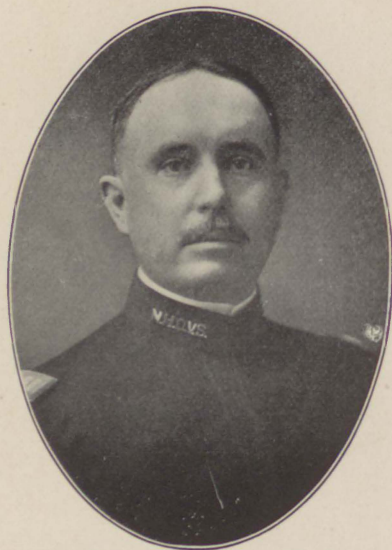
MAJ. A. L. SMITH  
Treasurer



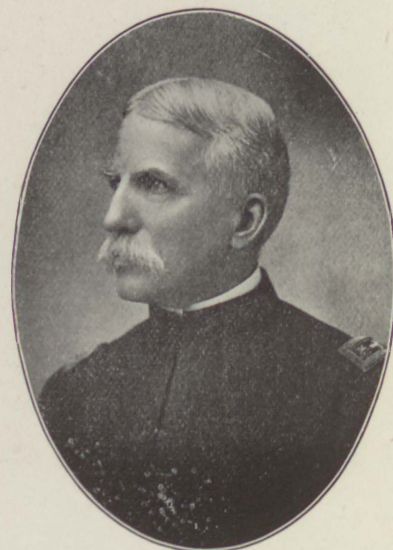
MAJ. B. D. RIDLON  
Surgeon



COL. JOHN T. RICHARDS  
Governor



CAPT. G. A. MITCHELL  
Quartermaster and Commissary  
of Subsistence



REV. H. S. BURRAGE, D. D.  
Chaplain



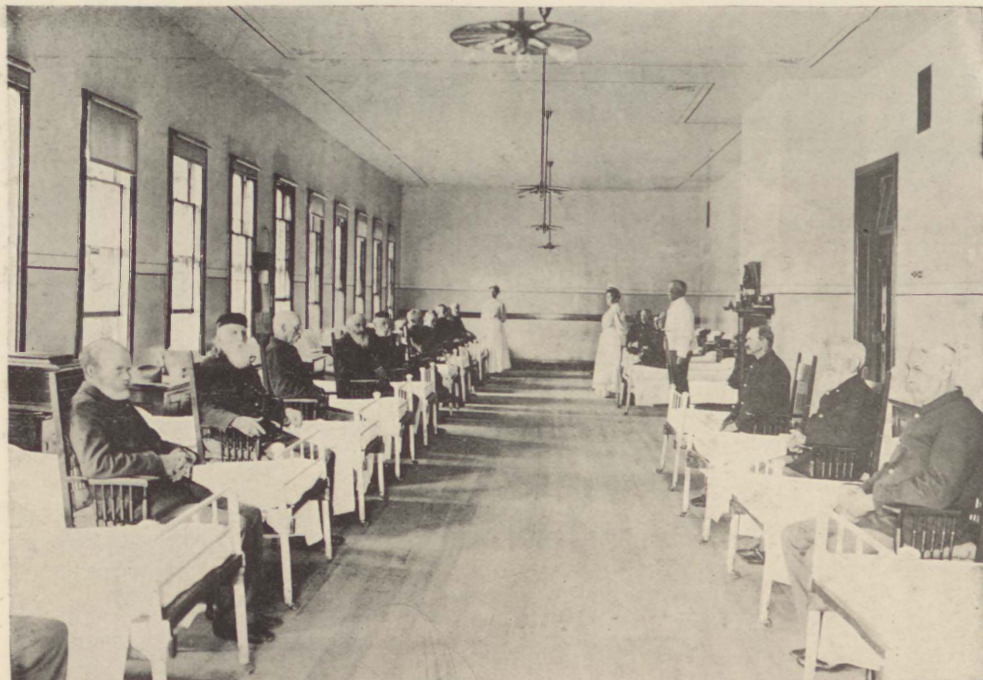


Headquarters

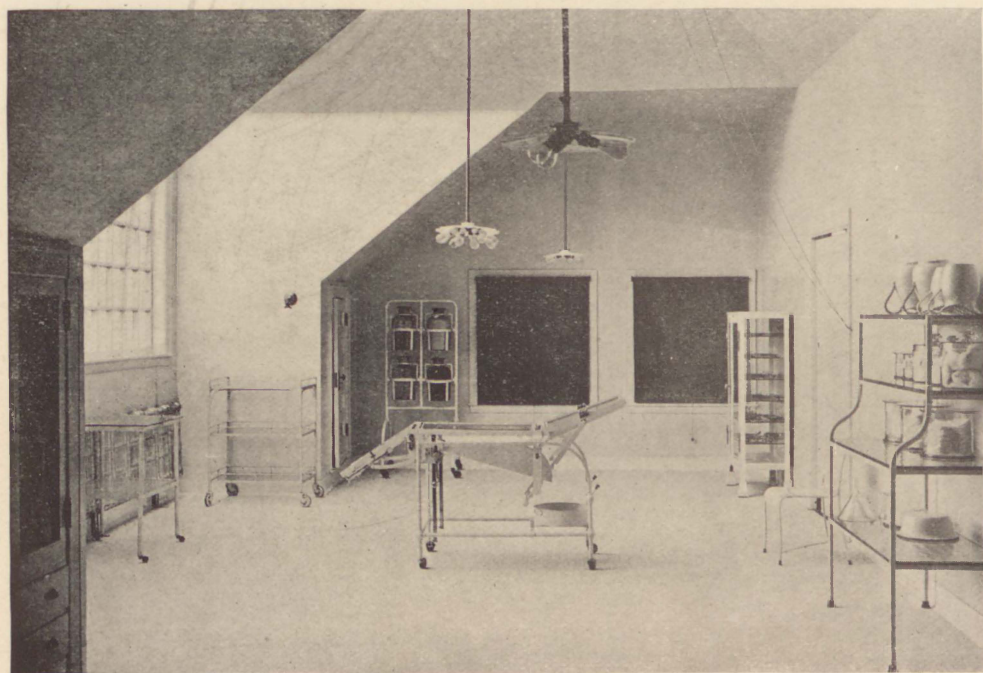


Hospital

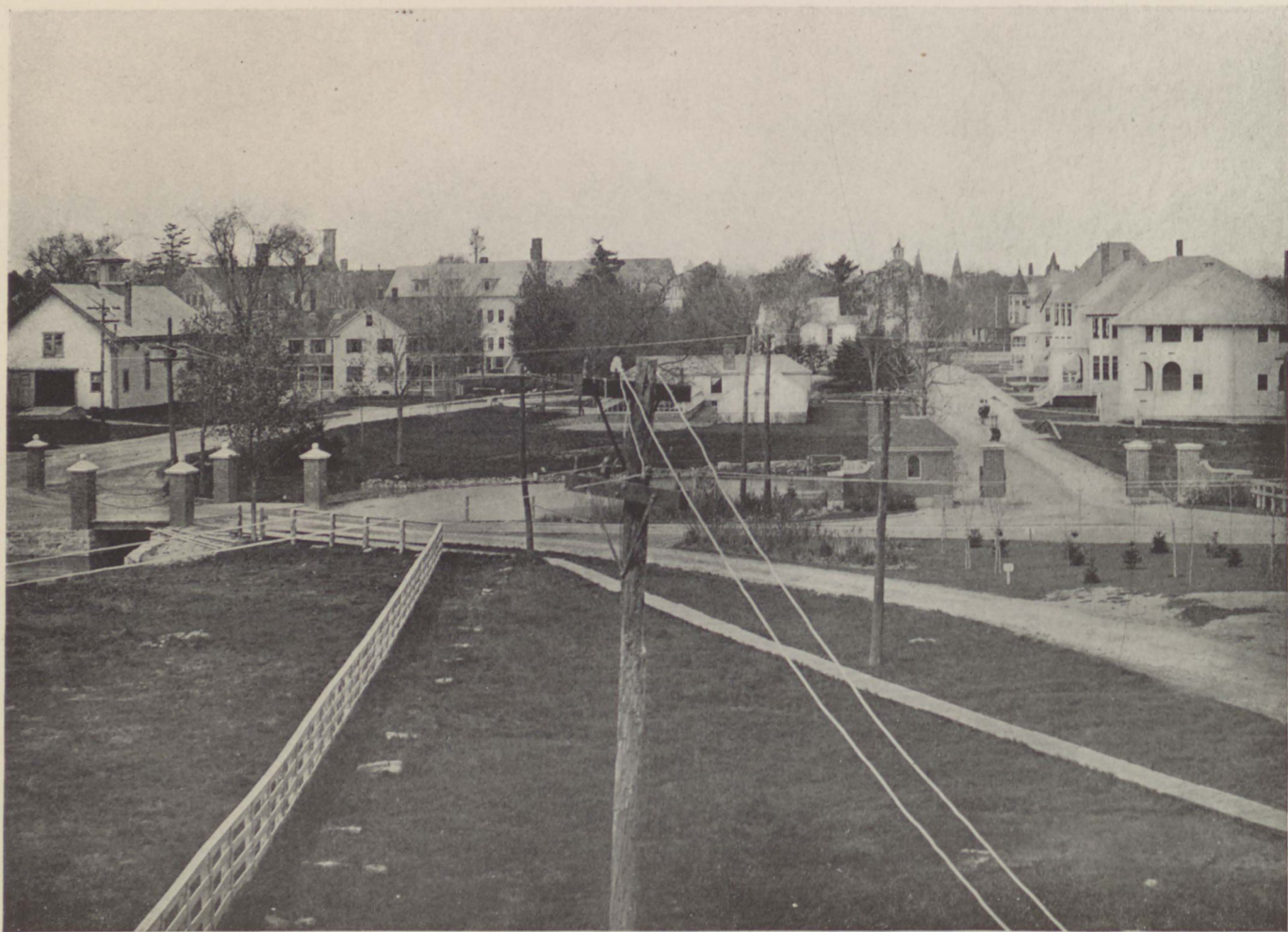




Hospital, Interior—Ward



Hospital, Interior—Operating Room



Camp from South Gate





Barracks, Quadrangle, Front View



Barracks, Quadrangle, Rear View





Barracks E and H



Barracks B and O

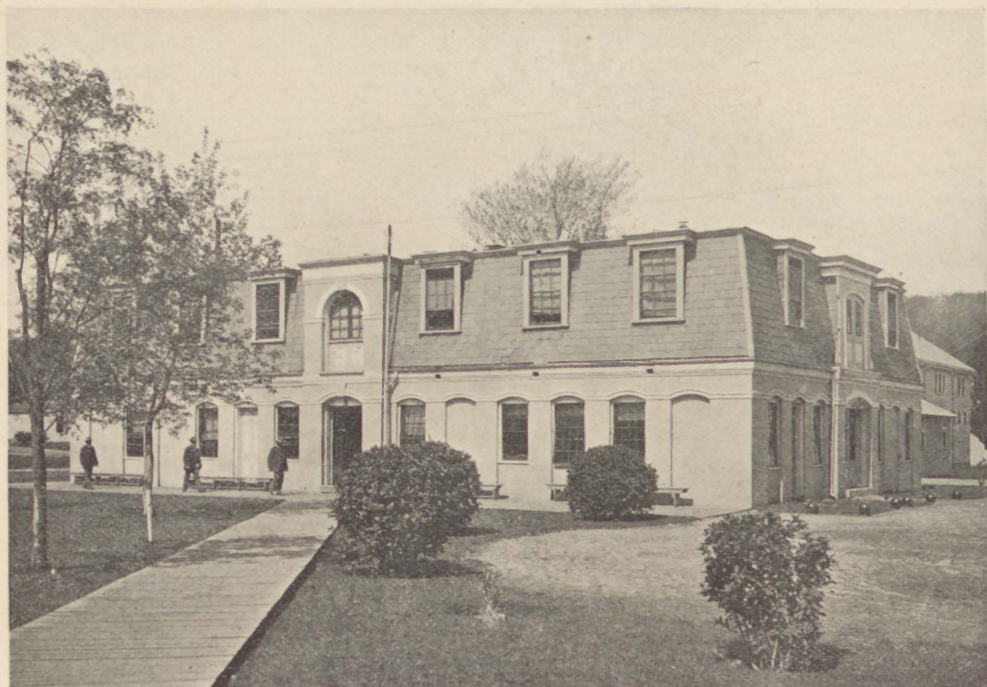


Barracks F

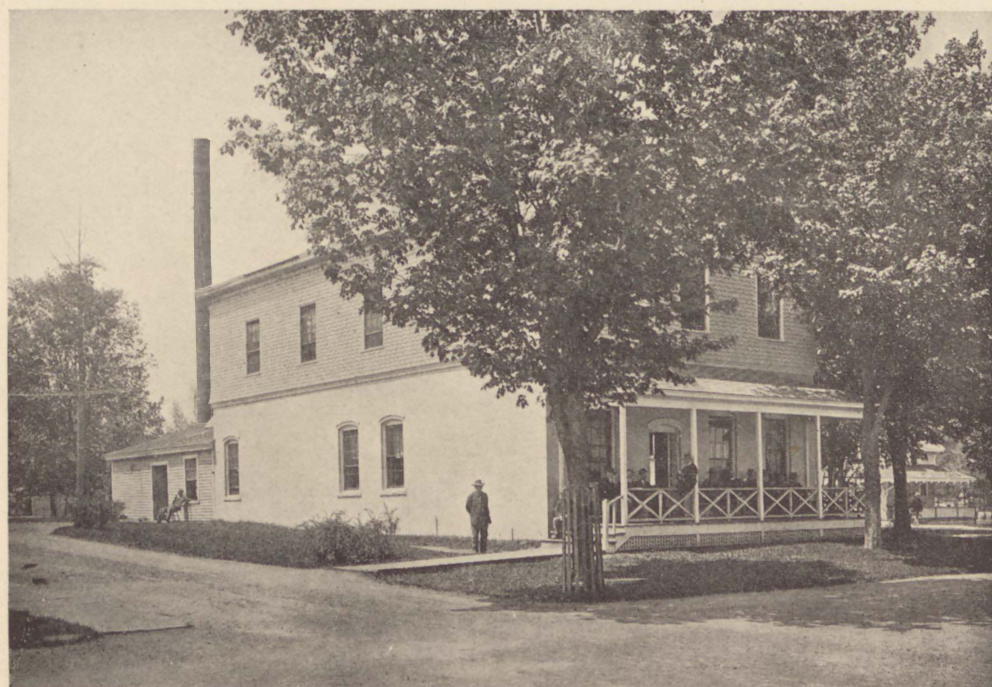


Barracks G





Barracks I, Wards 1 and 2



Barracks I, Wards 3 and 4

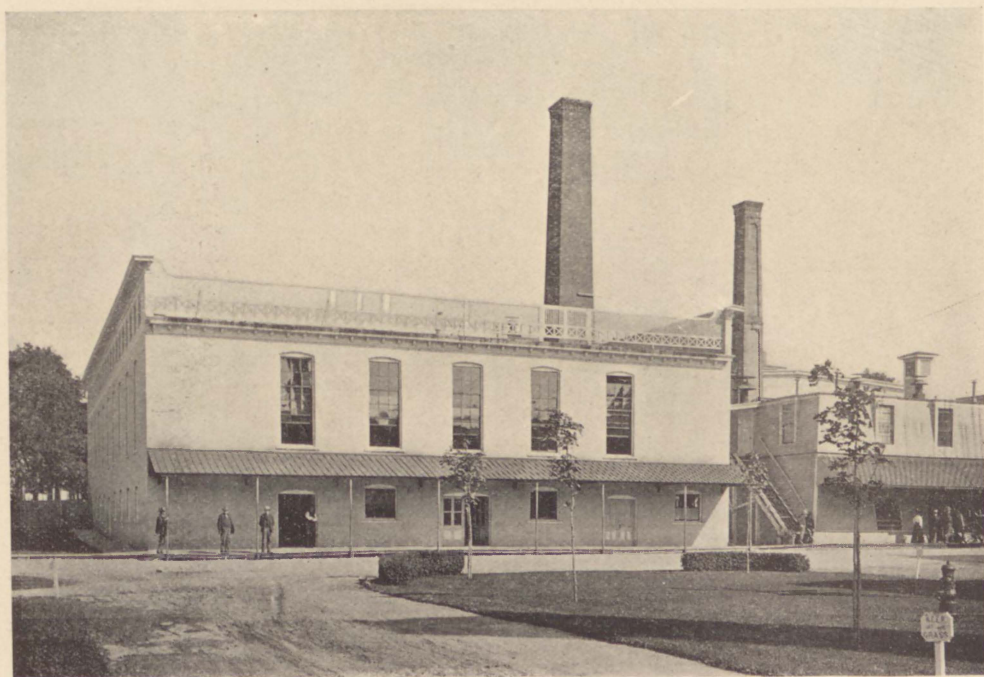


Chapel





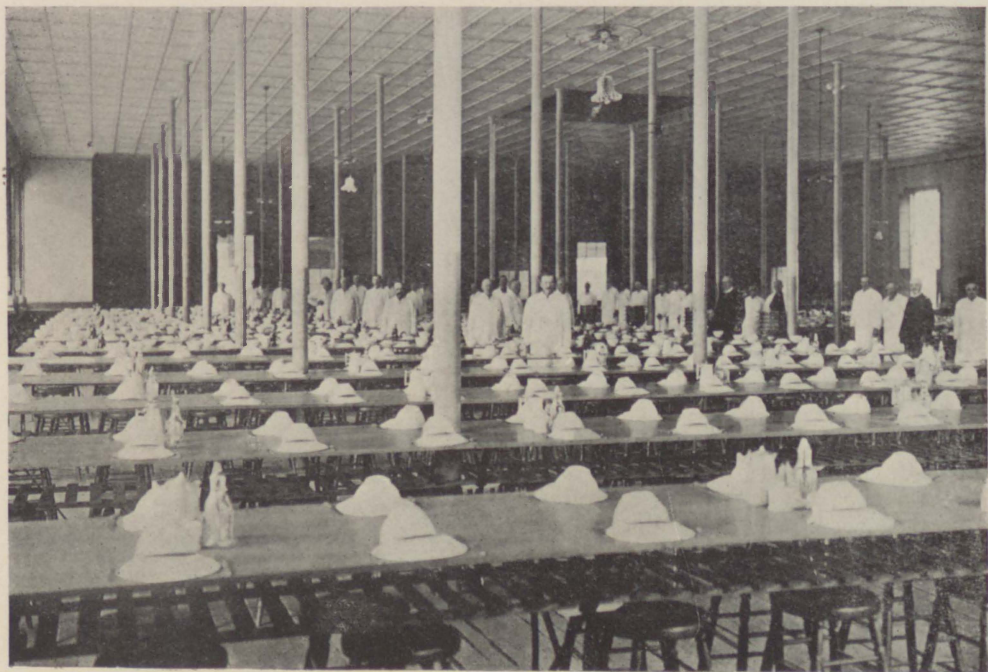
Library



Mess Hall



Library, Interior



Mess Hall, Interior



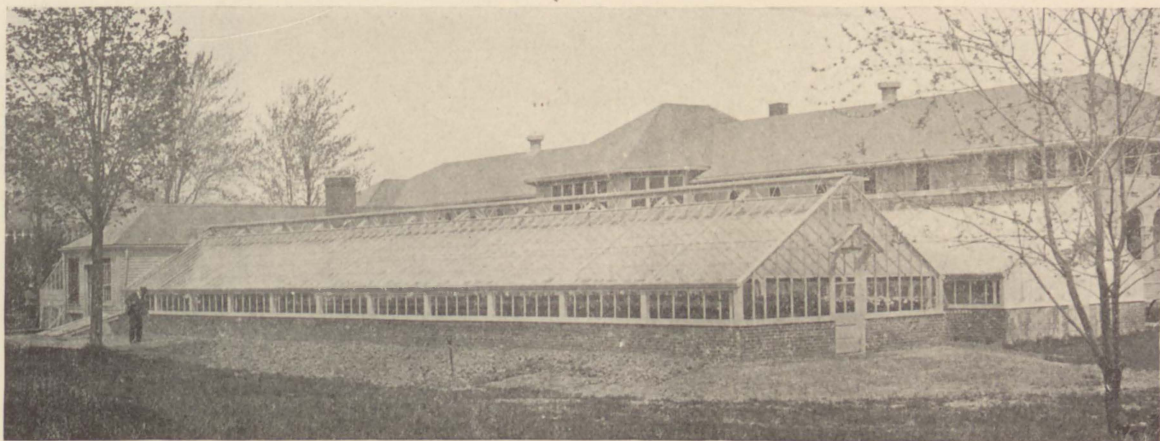


Quartermaster's Storehouse



Guard House and Home Store





Greenhouse



Barracks (Summer)



Theatre





Officers' Quarters, Looking North from Library



Camp from



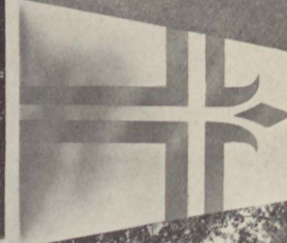
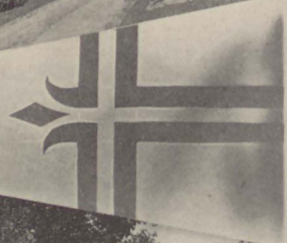
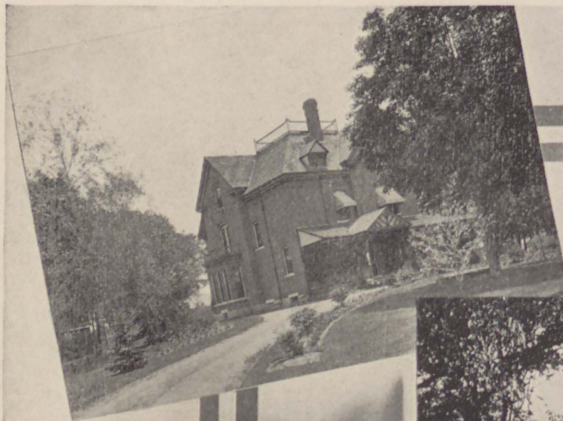


n Front



Camp from Front





Treasurer's Quarters  
Quartermaster's Quarters

Governor's Quarters

Surgeon's Quarters  
Chaplain's Quarters



Treasurer's Chief Clerk's Quarters

Chief Engineer's and Bandmaster's Quarters

Nurses' Quarters

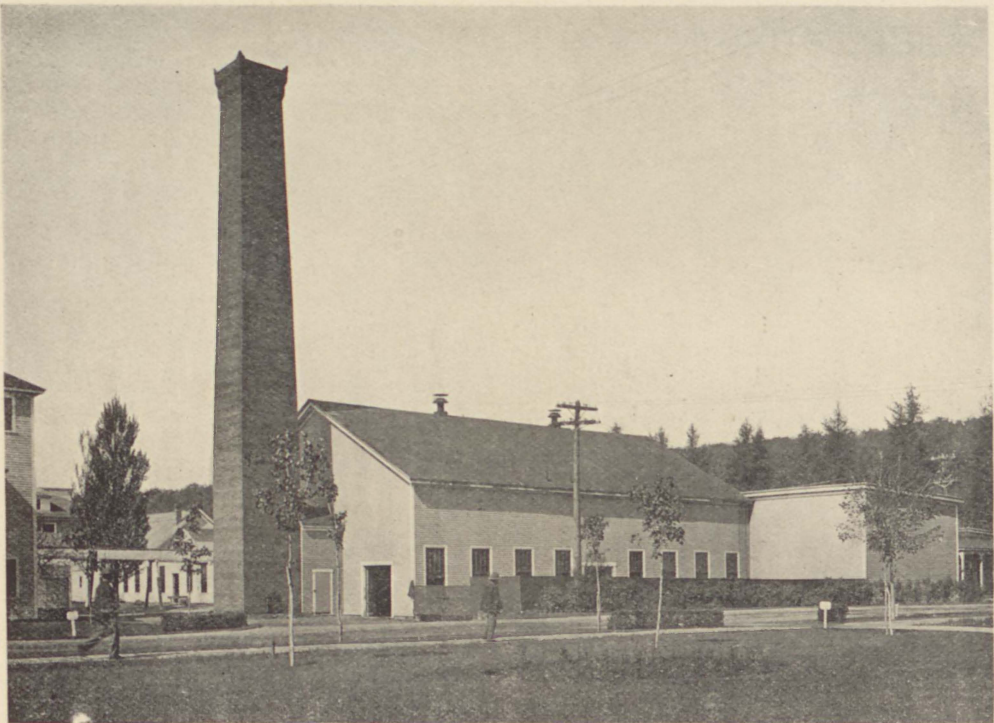




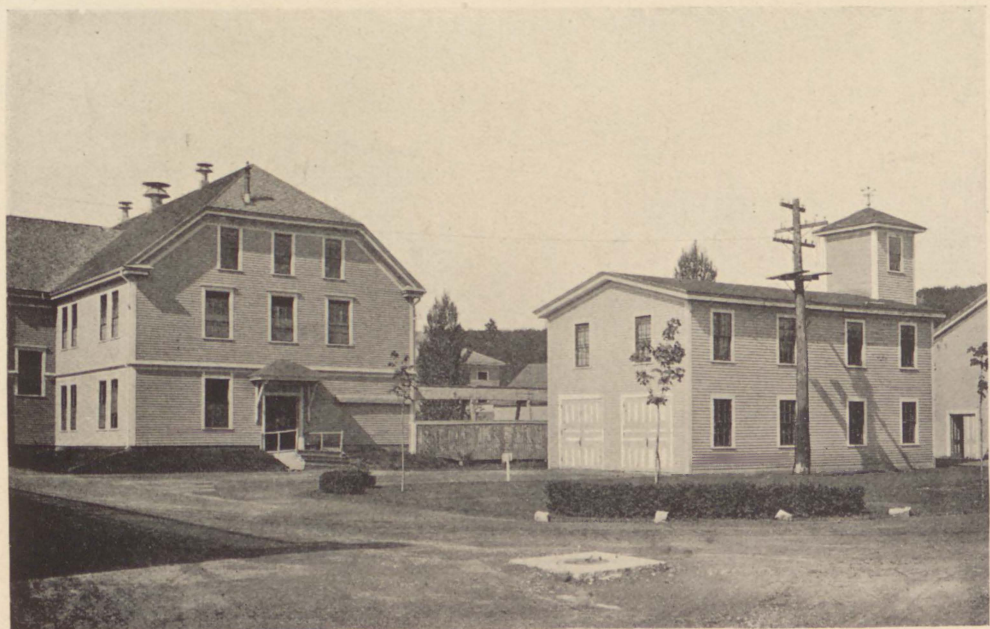
Club House



Beer Hall



Power House and Machine Shop



Laundry and Fire Engine House



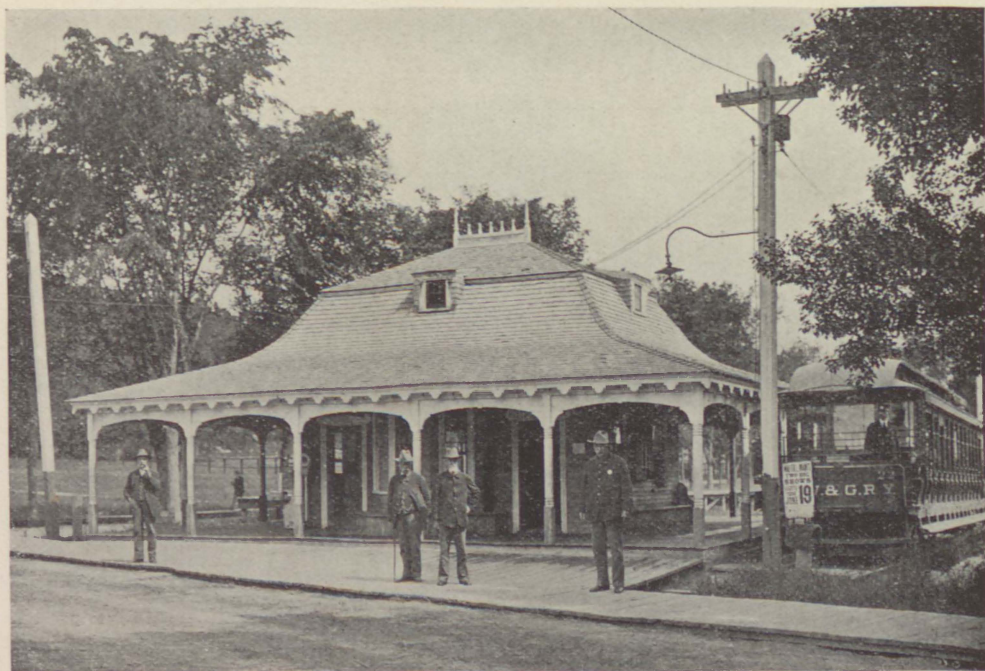


Hotel



Band Stand, North





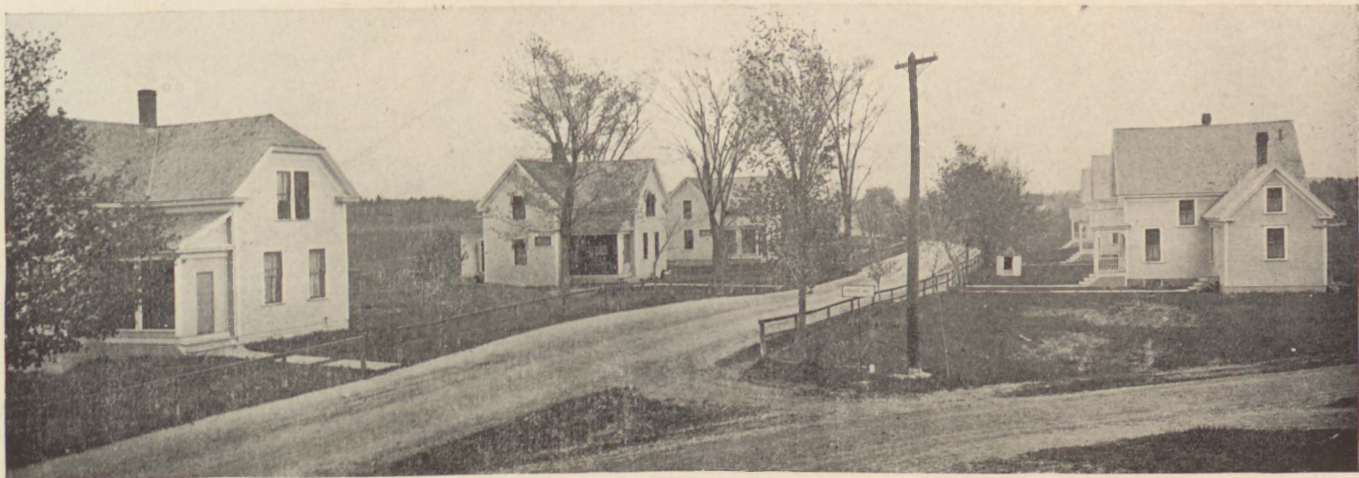
Electric Railroad Station



Kennebec Central Railroad Station



Barns



Cottages





Herd of Thoroughbred Holsteins



Herd of Thoroughbred Holsteins





Stables



Ice House and Reservoir





Avenue by Deer Park





Old Cemetery





Monument, Old Cemetery



Monument, New Cemetery





Memorial Day March to Cemetery



Memorial Day Decoration



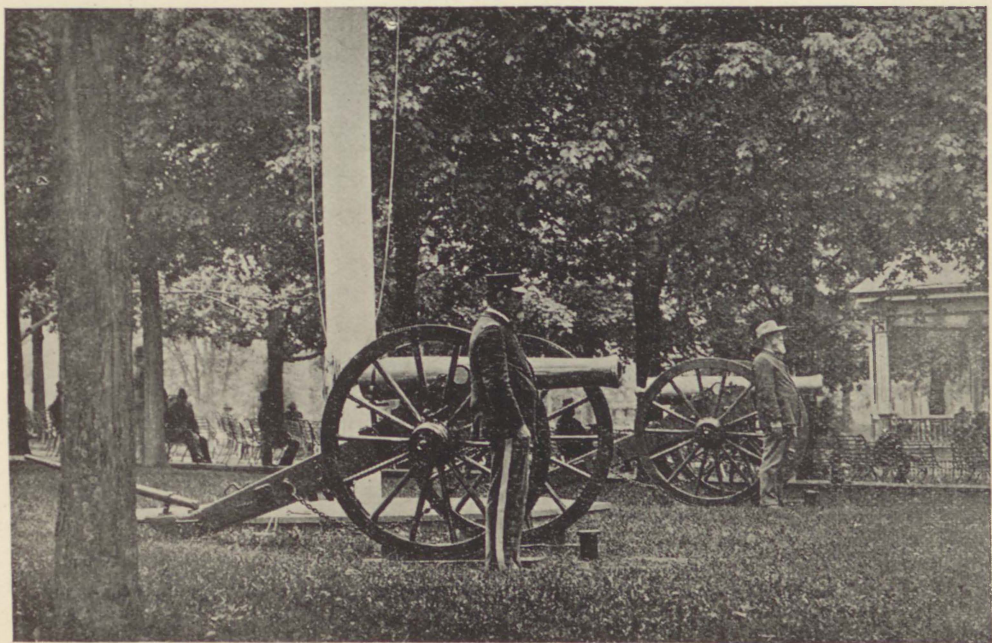


Elk



Deer





View near North Band Stand



View near South Band Stand





Band

