

1964

## Bangor High School: Dedication Program, November 14, 1964, 2:00 P.M.

Bangor High School

Follow this and additional works at: [https://digicom.bpl.lib.me.us/books\\_pubs](https://digicom.bpl.lib.me.us/books_pubs)

---

### Recommended Citation

Bangor High School, "Bangor High School: Dedication Program, November 14, 1964, 2:00 P.M." (1964). *Books and Publications*. 203.  
[https://digicom.bpl.lib.me.us/books\\_pubs/203](https://digicom.bpl.lib.me.us/books_pubs/203)

This Book is brought to you for free and open access by the Special Collections at Bangor Community: Digital Commons@bpl. It has been accepted for inclusion in Books and Publications by an authorized administrator of Bangor Community: Digital Commons@bpl. For more information, please contact [ccoombbs@bpl.lib.me.us](mailto:ccoombbs@bpl.lib.me.us).



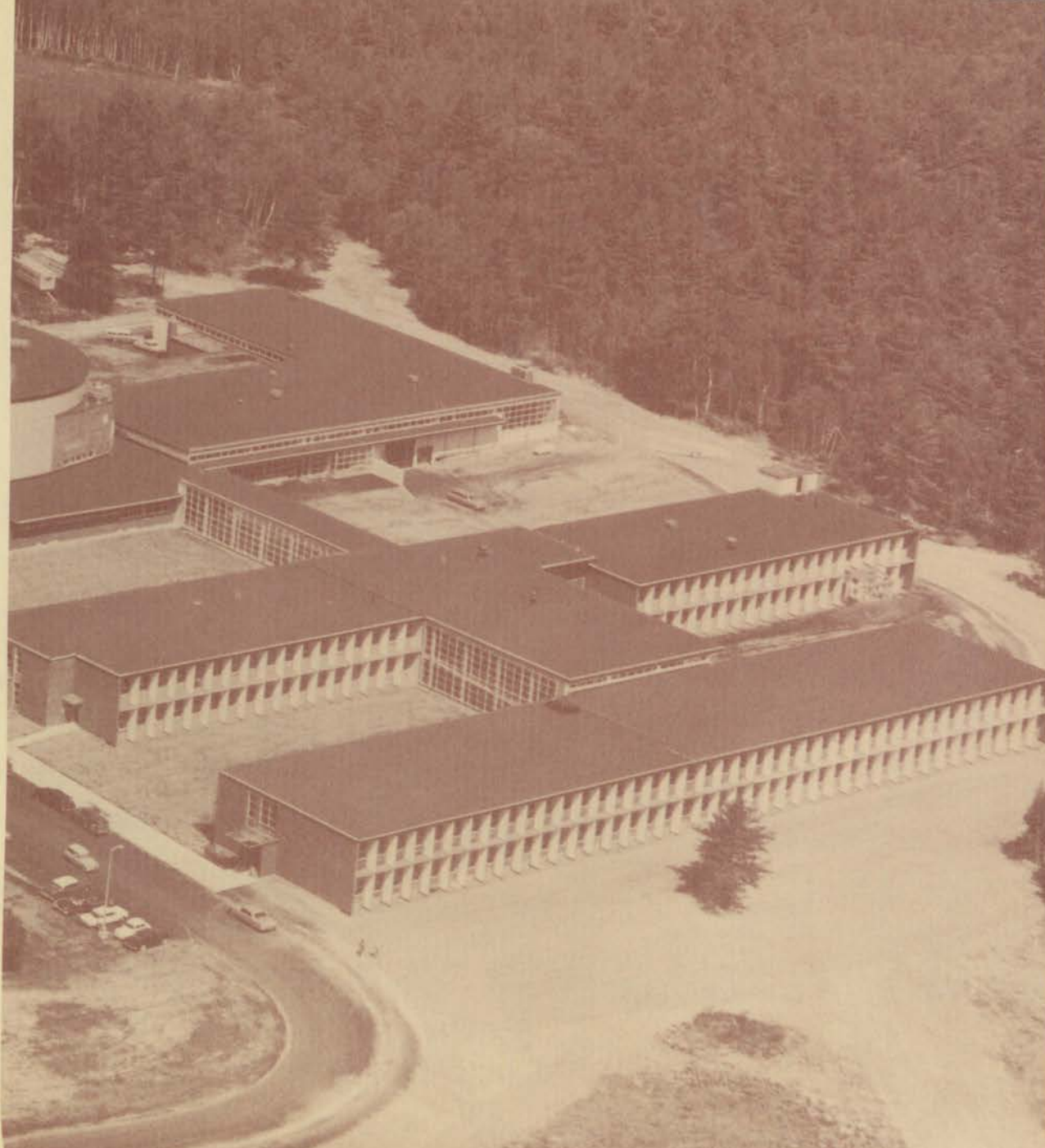
*"We shape our buildings; thereafter they shape us"*

WINSTON CHURCHILL

The City of Bangor  
proudly presents  
another modern facility  
for learning . . .

the

# BANGOR HIGH SCHOOL



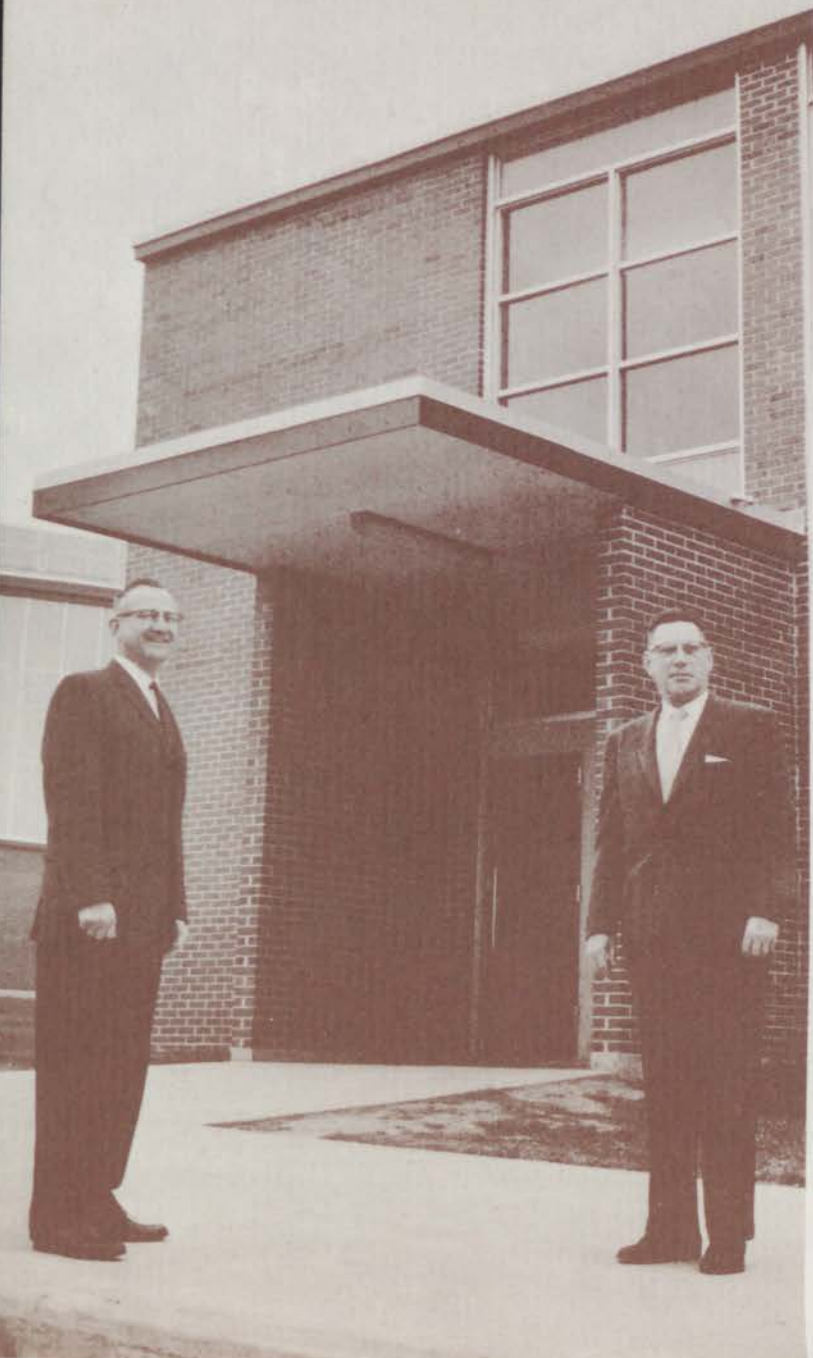


# DEDICATION PROGRAM



November 14, 1964  
2:00 p. m.

Andalucia Suite Ernesto Lecuona • Arr. by Jenkins Invocation	Bangor High School Orchestra
Introduction of Platform Guests	Rev. Philip Palmer, President Bangor-Brewer Council of Churches
Presentation of the Building	Milford F. Cohen, Chairman Bangor School Committee Charles F. Bragg, 2nd Chairman, Bangor High School Building Committee
Acceptance of the Building for the School Department for the Citizens of Bangor for the Bangor High School Faculty for the Bangor High School Students	Wendell G. Eaton Superintendent of Schools John W. Conti Mayor, City of Bangor Dana M. Simmons, Principal Bangor High School Paul Shapero, President Student Council Bangor High School Orchestra
Symphony in F Major Allegro Moderato Dittersdorf • Arr. by Schmid	
Dedication of Peakes Auditorium	Dr. Richard Gaillard, Member Bangor School Committee
Remarks	Mrs. Lawrence Peakes
Address	Kermit Nickerson Deputy Commissioner Maine State Department of Education
Symphonette Pleyel • Arr. by Barnes	Bangor High School Orchestra



The name "Bangor High School" harbors many proud traditions. Today, November fourteen, nineteen hundred and sixty-four we pass on the name to a new generation and to generations yet to come.

That this new building may deserve to bear the proud name, Bangor High School, depends on how effectively it functions in housing its students and its teachers in the numerous social, academic, creative and extra curricular activities which comprise the program of the Bangor High School.

We cordially invite you to a pictorial tour of Bangor High School.

LEFT: Wendell G. Eaton,  
Superintendent of Schools.  
RIGHT: Dana M. Simmons,  
Principal of Bangor High  
School.



The administration office; the nerve center of the school. Public inter-communication and private telephone systems provide immediate contact with all building areas.



Members of the English department meet in their office where teaching aids are readily at hand.



This conventional classroom can be readily changed through the removal or relocation of the wall at the rear of the room. The demountable wall panels are attached on non-bearing steel frame-work.



This is a corner of the library. Centrally located and well equipped, it will offer 15,000 books from which students may choose.



Creative, rather than academic, is the approach to art education; an approach allowed in this workshop situation.



Skills to be later applied in on-the-road training situations are first acquired in the simulated cars in this driver education room.

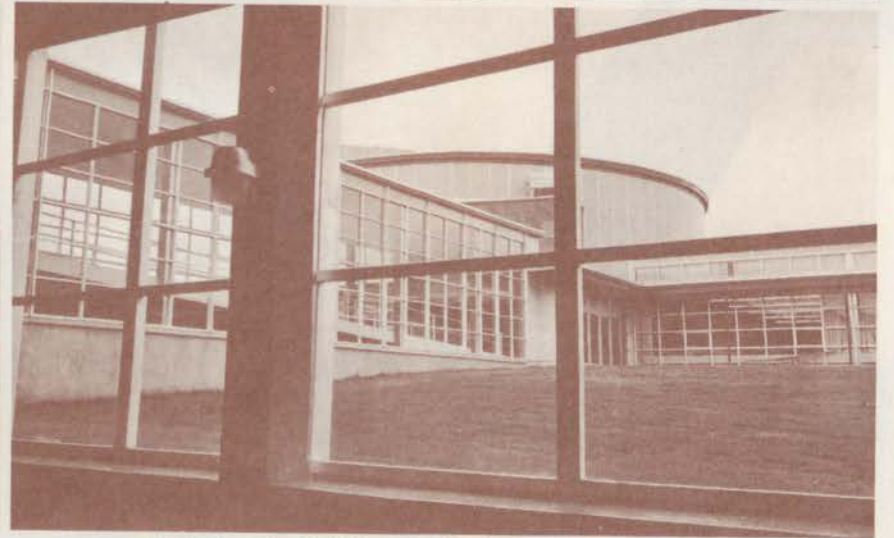
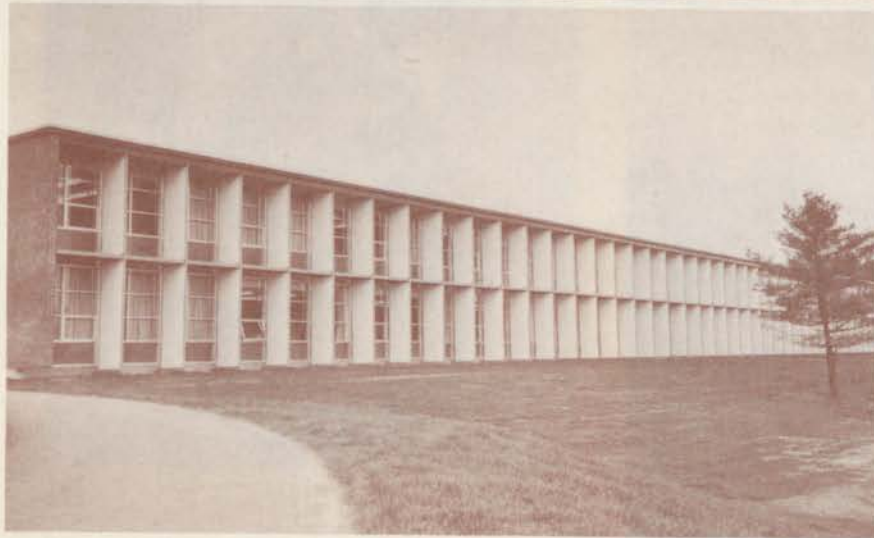


Ordinarily divided by two coil-walls into three separate rooms, the 96 x 160 ft. gymnasium is shown here in use by three classes under the supervision of one instructor.



The metal shop is one of six spacious industrial arts areas with up-to-date equipment.

The cafeteria is filled with four hundred fifty students—not once, but three times each meal.



Designing the building specifically to house an educational program did not prevent the architect, Eaton W. Tarbell and Associates, Inc., from achieving a most dramatic and pleasing structure; one of which Bangor is proud to present as the home of the Bangor High School.

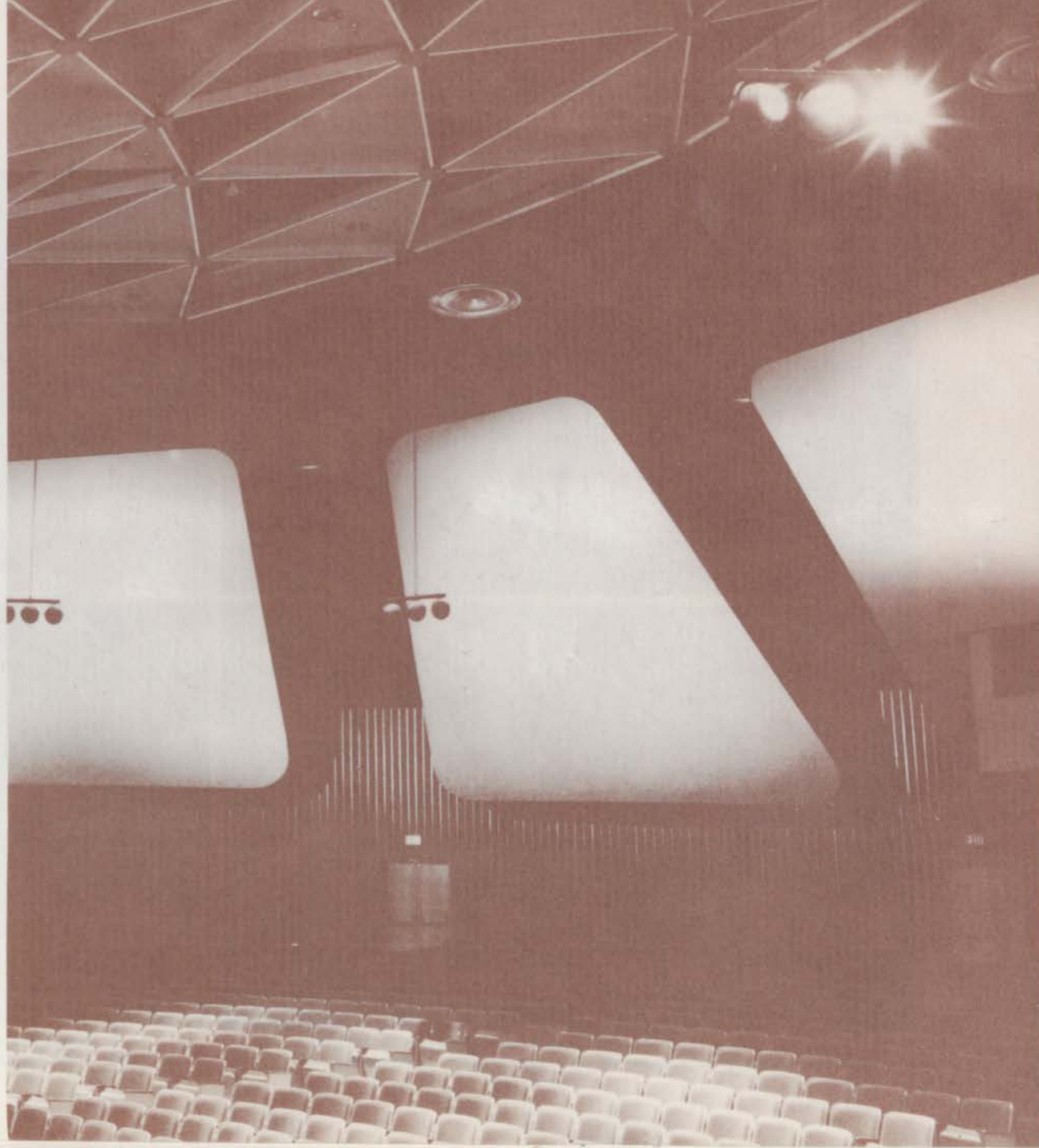


## PEAKES AUDITORIUM



Lawrence A. Peakes, Superintendent of Bangor Schools from 1956 to 1962 provided the inspiration which led to the construction of the Bangor High School. Of particular importance to Mr. Peakes was the ideal of an auditorium which would serve both the school and the community.

In recognition of Mr. Peakes' foresight and dedication to this ideal, the Bangor School Committee directed that this facility be dedicated to his memory, and named the Peakes Auditorium.



## BANGOR SCHOOL COMMITTEE

Milford F. Cohen, Chairman  
Anne K. Brontas  
Dr. Richard A. Gaillard  
James E. Halkett  
Dr. Edward C. Porter  
Grace A. Overlock (resigned January 1964)

## BANGOR CITY COUNCIL

John W. Conti, Chairman  
Robert Baldacci  
John T. Barry  
Nicholas Brontas  
Joseph S. Dinsmore  
Charles E. Higgins  
William M. Houston  
Edward J. Hughes  
L. Felix Ranlett  
Clifford E. Bailey (until October 1964)

## BANGOR HIGH SCHOOL BUILDING COMMITTEE

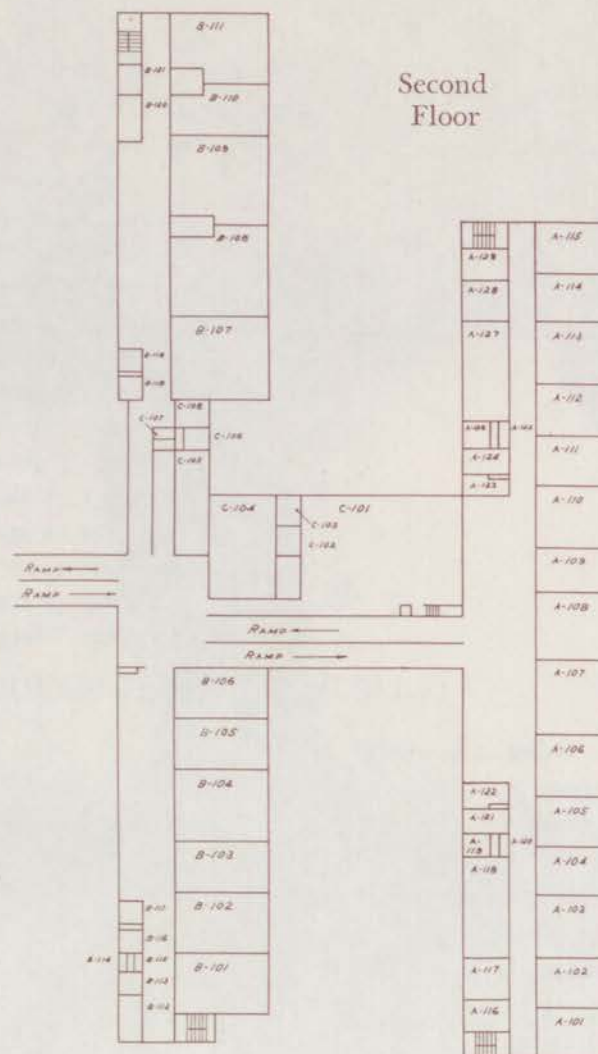
Charles F. Bragg, 2nd, Chairman  
John T. Barry  
Dr. Carl E. Blaisdell  
Merrill R. Bradford  
George D. Carlisle  
Milford F. Cohen  
Carl E. Delano  
Dr. Richard A. Gaillard  
Charles E. Higgins  
Merrill R. Kittredge  
Frederick S. Newman  
Grace A. Overlock  
Dr. Edward C. Porter  
Dr. Frederick W. Whittaker  
Albert H. Winchell, Jr.  
George P. Limberis (resigned October 1960)  
James F. White (resigned October 1961)

CITY MANAGER . . . . . Joseph R. Coupal, Jr.  
SUPERINTENDENT OF SCHOOLS . . . . . Wendell G. Eaton  
PRINCIPAL BANGOR HIGH SCHOOL . . . Dana M. Simmons



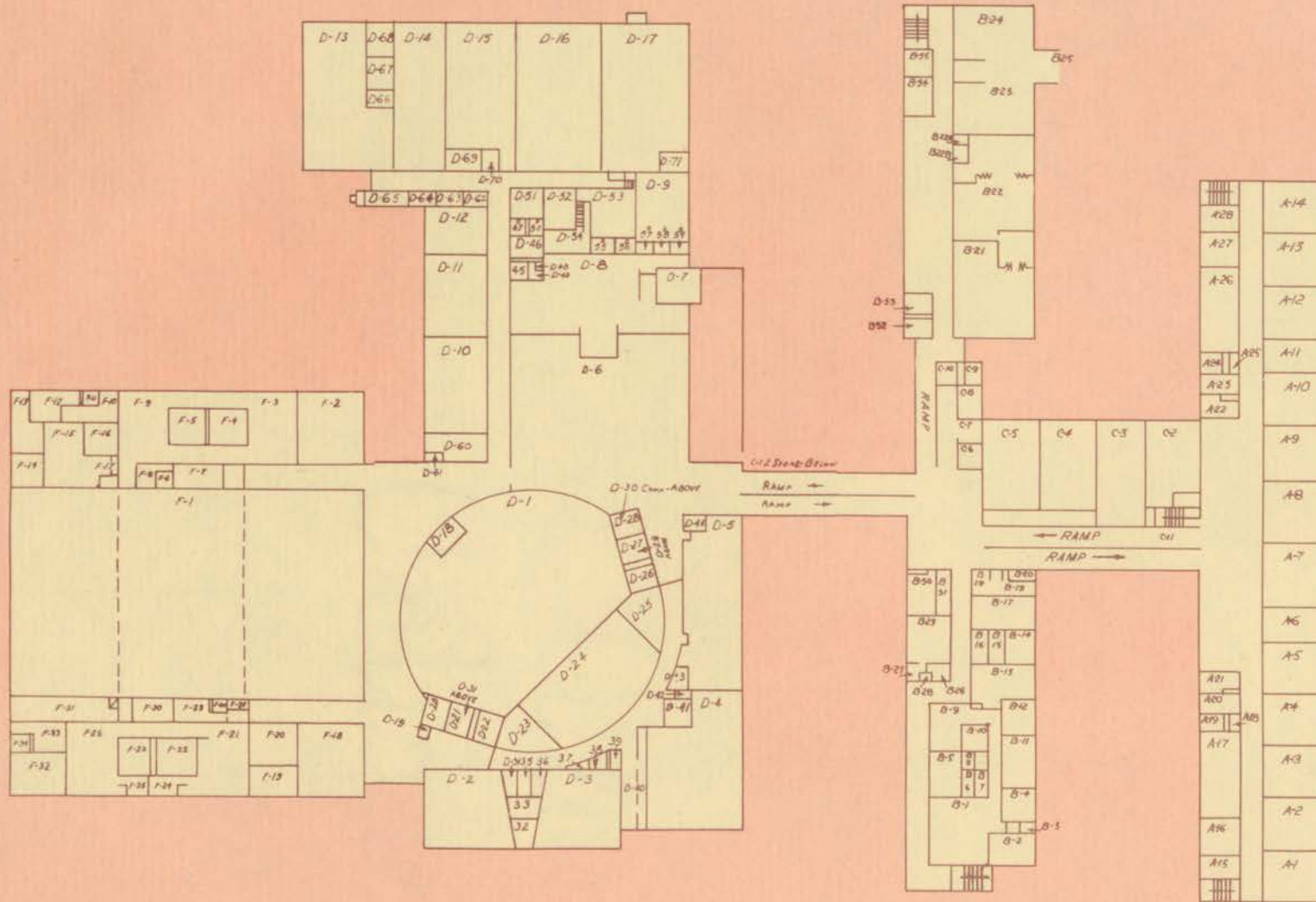
## STATISTICS

Site	44 acres
Capacity	1500 students
Floor Area	198,428 square feet
Volume of Building	3,981,400 cubic feet
Cost of Building—Construction only	\$2,666,687
Excluding land purchase, site development, roads and walks, furnishings, architects fees.	
Cost of Building—All inclusive (approx.)	\$3,730,000
Square Foot Cost — Building only	\$13.44
— All inclusive	18.80
Cubic Foot Cost — Building only	.67
— All inclusive	.93
EDUCATIONAL CONSULTANT . . . .	Dr. William K. Wilson
ARCHITECT . . . . .	Eaton W. Tarbell & Associates, Inc.
GENERAL CONTRACTOR . .	Consolidated Constructors, Inc.



Room	Designations
A1-6	English
A7-8	Study
A9-14	Foreign Language
A15-28	Book Storage
A16	English Dept. Head
A17	English Teachers
A20-23	Toilets
A26	Language Teachers
A27	Language Dept. Head
A101-106	Social Studies
A107-108	Study
A109-115	Mathematics
A116-129	Book Storage
A117	Social Studies Dept. Head
A118	Social Studies Teachers
A121-124	Toilets
A127	Mathematics Teachers
A128	Mathematics Dept. Head
B1	Administration
B2	Principal
B4	Assistant Principal
B5	Attendance
B11	Conference
B12	Guidance Dept. Head
B13	Guidance Information
B14-16	Guidance Counselling
B17	Clinic
B21-22	Home Economics
B23-24	Biology
B29	Teachers Lounge
B30	Student Activities
B31	Publications
B101-106	Business Education
B107	Physics
B108-109	Chemistry
B110-111	Biology
B112	Business Ed. Teachers
B113	Business Ed. Dept. Head
B116-119	Toilets
B120	Science Dept. Head
B121	Book Storage
C2	Language Laboratory
C3	Mentally Retarded Class
C4	Practical Arts Class
C5	Distributive Education
C101	Library

# SCHOOL DIAGRAM



- C102 Librarian's Office
- C103 Conference
- C104 Study
- C105 Science Teachers
- D1 Peakes Auditorium
- D2-3 Music
- D4 Master Teachers Room
- D5 Art
- D6 Cafeteria
- D7 Teachers Dining
- D8 Kitchen
- D10 Driver Education
- D11 Mechanical Drawing
- D12 Project Drawing
- D13 Woodworking
- D14 Electricity
- D15 Graphic Arts
- D16 Automotive
- D17 Metal Work
- D24 Stage
- D20-22-26-28 Toilets
- D34-36 Music Practice
- F1 Gymnasium
- F2 Health Class Room
- F3-9 Boys Lockers
- F7 Phys. Ed. Teachers
- F10-17 Team Rooms
- F18-20 ROTC
- F21-26 Girls Lockers
- F29 Phys. Ed. Teachers
- F30-31 Gym Storage
- F32 Field Storage
- F11-34 Toilets