

1956

Maine for winter vacations

Maine Publicity Bureau

Follow this and additional works at: https://digicom.bpl.lib.me.us/books_pubs

Recommended Citation

Maine Publicity Bureau, "Maine for winter vacations" (1956). *Books and Publications*. 74.
https://digicom.bpl.lib.me.us/books_pubs/74

This Book is brought to you for free and open access by the Special Collections at Bangor Community: Digital Commons@bpl. It has been accepted for inclusion in Books and Publications by an authorized administrator of Bangor Community: Digital Commons@bpl. For more information, please contact ccoombs@bpl.lib.me.us.



MAINE

FOR

Winter Vacations

WINTER TRAVEL
SKI AREAS
ACCOMMODATIONS

His Excellency
EDMUND S. MUSKIE
GOVERNOR OF MAINE



EDMUND S. MUSKIE
GOVERNOR

STATE OF MAINE
OFFICE OF THE GOVERNOR
AUGUSTA



It is my very real pleasure, as Governor of the State of Maine, to extend this cordial invitation to visit our State during the winter season.

Maine has long been known for the many attractions beckoning vacationists during the spring, summer, and fall; however, we also feel that we have considerable to offer during the winter months.

We boast of areas with the most dependable snow conditions in the east for the winter sports participant; excellent accommodations and incomparable Maine food at hotels, motels, sporting camps, and restaurants; and good, well kept highways maintained for your convenience and safety year-round.

Nowhere can you find a more diversified scenery than here in the State of Maine. Mountains, lakes, and sea-coast in a setting of over 17 million acres of forest lands, resplendently green, winter and summer.

Whether you are seeking thrilling ski trails and slopes with the most modern up-hill devices or quiet, gentle family slopes we have them here in Maine.

Perhaps you prefer simply a quiet and invigorating winter vacation at one of our many year-round hotels, inns, or camps. In either case, you will find a real down-east welcome.

Be our guest this year, have a fine time, and come back soon.

Sincerely,


Edmund S. Muskie

MAINE FOR *Winter Vacations*

*A Listing Of Maine
Winter Recreation Areas
And Where To
Stay, Eat and Shop*



8TH EDITION

A Publication
of
THE STATE OF MAINE PUBLICITY BUREAU

**Northeast
Airlines**



Avis
MAINE RENT-A-CAR SYSTEM

You'd Be there Now . . .

WHY DRIVE ALL THE WAY?

FLY NORTHEAST

DRIVE AVIS

With more time to enjoy
WINTER SPORTS IN MAINE



FAST DAILY NORTHEAST FLIGHTS DIRECT TO
THREE CITIES - WITH NEW MODEL AVIS SKIER-
IZED CARS - WAITING AT THE AIRPORT.

- AUGUSTA
- HOLLISTON
- PORTLAND
- ROCKLAND
- BANGOR
- LEWISTON
- PRESQUE ISLE
- WATERVILLE

**Northeast
Airlines**



Avis
MAINE RENT-A-CAR SYSTEM

THE MAINE TURNPIKE EXPRESS TOLL HIGHWAY



KITTERY to AUGUSTA - 106 MILES

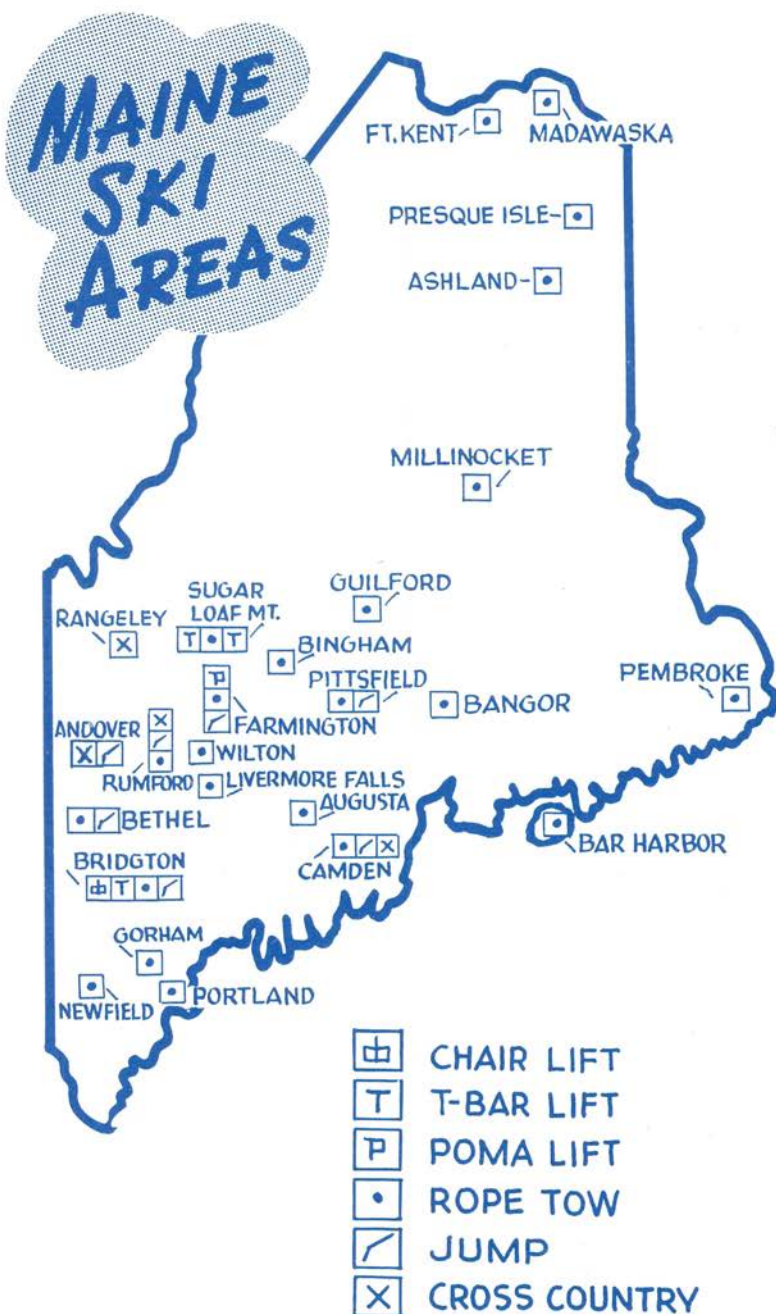
The scenic Maine Turnpike, joining Kittery, the gateway to Maine, and Augusta, the State Capital, is a new modern expressway to Vacationland. It has been engineered to provide motorists with the utmost in safety and comfort.

The Turnpike by-passes all congested areas, permitting a uniform speed of the 60-mile-per-hour limit without interruption.

For the quickest, safest and most pleasant trip, use the new Maine Turnpike. Direct interchanges lead to all Maine ski areas.

SERVICE AREAS AT CONVENIENT INTERVALS PROVIDE RESTAURANT AND SERVICE STATION FACILITIES FOR THE COMFORT OF THE MOTORIST.

SWIFT-SAFE-SCENIC



INDEX to WINTER RECREATION AREAS

<i>Location</i>	<i>Page</i>
ANDOVER	11
ASHLAND	11
AUGUSTA	11
BANGOR	12
BAR HARBOR	12
BELFAST	13
BETHEL	13
BINGHAM	13
BRIDGTON	14-18
CAMDEN	18
EUSTIS	19
FARMINGTON	19
FORT FAIRFIELD	19
FORT KENT	19
FRYEBURG	20
GORHAM	20
GUILFORD	20
KINGFIELD	20
LEWISTON	20
LIVERMORE FALLS	20
MADAWASKA	21
MILLINOCKET	21
NEWFIELD	21
PEMBROKE	21
PITTSFIELD	21
PLEASANT MOUNTAIN	15
PORTLAND	22-23
PRESQUE ISLE	24
RANGELEY	24
RUMFORD	25
STRATTON	25
SUGARLOAF MOUNTAIN	26-30
WATERVILLE	30
WILTON	30

(See Page 32 for INDEX TO ADVERTISERS)



MAINE FOR WINTER VACATIONS

Each year a greater number of people are discovering opportunities for relaxation and enjoyment in the winter season. Whether this takes the form of skiing and winter sports or simply a restful stay at one of the many fine hotels, motels, inns or sporting camps that remain open year-round, Maine invites you to spend your "Winter Holiday" in the Pine Tree State this year.

The State of Maine, with 33,040 square miles of all grades of forested terrain—majestic Pine and Spruce in a blanket of white—is a veritable "Christmas Tree Land" from December into April.

The ever changing artistry of Nature, bathing the countryside in a cloak of winter white is a challenge to artists and photographers and a delight to the vacation-traveller.

A fresh fall of snow clinging to the endless forests of evergreen, glistening like trillions of priceless jewels in the warming sun; a grey-blue sea along 2,500 miles of jugged coastline, smoking skyward on a frosty morning; the exhilaration of a winter walk along the stillness of a country lane and the thrill of gliding over any one of 2,500 crystal-clear ice locked lakes and ponds, on a moonlight night—these are some of the rewards waiting the winter vacationist in Maine this year.

The public roadway system containing 3,000 miles of U. S. and State Highways, 106 miles of Turnpike, and 22,000 miles of secondary and "feeder" roads are kept open, well plowed and sanded, regardless of weather.

Although not generally regarded as a "mountain State", Maine has several spectacular mountain ranges containing 20 peaks over 4,000', 300 well over 3,000', and innumerable lesser mountains and hills.

Accommodations providing the best in food and lodging may be obtained all over Maine where famous "Down East" cooking and real

The Camera Center of Maine



A complete selection of Cameras,
Accessories, Films, Photo-Supplies,
and Binoculars.

14 PREBLE ST. ● CASCO ARCADE
PORTLAND, MAINE
TEL.: SP 3-6461



"Maine Hospitality" greet the traveller with a warm fireside and good beds waiting at the end of the day.

For the skier, Maine has everything. Modern up-hill devices, all classes of slopes and trails from novice to those that will tempt the most proficient, and jumps and cross country courses that compare favorably with any in the East. Chair lifts, T-Bars, Poma lifts and Tows are located in most every region of the State.

A complete listing of these areas will be found in the following pages of this book. All major areas are completely equipped to service the skier. Instruction is available in these developments and comfortable facilities for shelter and food will be found.

Maine down-hill and jumping areas schedule a full program of activities that will satisfy the spectator and participant alike. These include down-hill and slalom race meets, thrilling jumping championships and colorful winter carnivals. Most Maine schools and colleges, as well as several areas such as Rumford, Andover, Caribou and Farmington, set aside one weekend a year for their annual winter carnival activities.

Among the leading race meets for the 1957 winter season are the following:

NEW MEADOWS INN

Route No. 1

Between Bath and Brunswick

"Maine's Famed Shore Dinner House"

Open Year Round



- Feb. 11-12: State of Maine Nordic Championships, Rumford.
March 10: USEASA 30 Kilometer Cross Country Championships, Andover.
April 7-8: Sugarloaf Schuss and USEASA Men's Giant Slalom Championships, Sugarloaf Mountain.

Most Maine ski areas are located in the so-called snow belt, where good skiing is the rule throughout the season. Sugarloaf, Maine's newest development, is blessed with the most dependable snow conditions in this section of the country. Average snow cover here is 140 inches with skiing in the snowfields remaining good long into the spring.

The many family tow areas in Maine are ideal for the casual weekend skier who is looking for uncrowded slopes, easy terrain and congenial atmosphere. Here, he can set his own pace and enjoy skiing with his family. These areas make ideal training grounds for the children and many have active children's programs.

So, for that relaxing vacation by the fire, or the thrill of the ski trails and slopes and the colorful environment of the out-of-doors in the wintertime for the skier, expert or "snow bunny", try Maine this winter.

The Newcastle Inn

U. S. Route 1

Newcastle, Maine

Rooms with Private bath shower or running water

Free Parking — Breakfast Served

OPEN ALL YEAR

Jane L. Pomeroy

Tel. Damariscotta 8115

YOUR KEY TO BETTER SKIING

THE BASS TEMPO'57



AN OUTSTANDING BOOT

G. H. Bass & Co., 18 Main St., Wilton, Maine



WINTER RECREATION AREAS

Where to Ski — Stay — Shop — Eat

ANDOVER

Lone Mountain Area, located 1 mile south of Village on route 5. 40 Meter Jump, 2,000' slope, 500' wide. Warming hut. Cross Country trail, 30 kilometer. Trail, length $\frac{3}{4}$ mile, maximum grade, 33°.

ASHLAND

Sheridan Mountain Ski Area, located 2 miles from Village on black top road and RR line. 1,500' ROPE TOW. Open slopes and trails. Warming hut at slope, restaurants in village.

AUGUSTA

Silver Hill Ski Area, located on Dr. Mann Road in Chelsea. 2½ miles from city center. 650' ROPE TOW. Open slopes and trails. Warming hut and lunch bar. Instruction and free ski school clinics. Specializing in family skiing. Tow runs week-ends and Holidays.

MAINE CLIMATE

The U. S. Department of Commerce, Weather Bureau annual meteorological summary, says "Maine has the most healthful climate in the United States and equals any in the world, not only in the summer but also, contrary to popular belief, in the winter."

Mt. Vernon Lodge and Coffee Shoppe

Short Distance from
Sugarloaf Mountain

ICE SKATING

Tel. 39-2

Route 41

MOUNT VERNON, MAINE

<p>True Maine Hospitality</p>  <p>Bangor House in Bangor, Maine</p> <p>Excellent Meals. Air conditioned Dining Room, background music. Cocktail Lounge, Rooms from \$3.75. Family Plan Rates. Week-end Tow Skiing at Bald Mountain only 15 miles away. Horace W. Chapman, Pres. Bangor, Me.</p>	<p>McKAY COTTAGES</p> <p>Private Baths Running Water Free Parking Open All Year</p> <p>Winter Rates: \$2-\$3 per day per person</p> <p>Tel. ATlantic 8-3531</p> <p>243 Main Street Bar Harbor, Maine</p>
---	---

BANGOR

Bald Mountain Ski Area, located in Dedham, 15 miles SE of Bangor. 800' ROPE TOW, 500' PORTA-TOW. 3 main slopes, beginners slope, 3 expert trails and 2 intermediate trails. Warming hut and lunch bar. Snow depth (1956) 40 in. Season, Jan. 1st - Apr. 15th. Annual Golden Skis Races in March.

BAR HARBOR

McFarland's Hill Area. 800' ROPE TOW serves open slopes. Ski hut. Active outing club program.

<p>CADILLAC MOTEL</p> <p>On Route 3 to Ocean Drive OPEN YEAR ROUND Some Kitchenettes - Hot Water Heat Office 336 Main Street Bar Harbor Maine TEL. ATlantic 8-3831 Mrs. William D. Stewart SEASON RATES</p>	<p>Elmhurst Inn 40 Holland Avenue Bar Harbor, Maine</p> <p>Centrally Located Open All Year Attractive Rooms and Suites with Private Baths DELICIOUS MEALS About 1 Mile from Yarmouth- Bar Harbor Ferry Terminal MRS. EDITH L. SPRAGUE, Prop. Tel. AT 8-3392</p>
---	--

M. V. "BLUENOSE"
Operating between Yarmouth, Nova Scotia and
Bar Harbor, Maine

Lv. BAR HARBOR	Tues., Thur., Sat. 9:00 a.m. E.T.
Ar. YARMOUTH	Tues., Thur., Sat. 4:30 p.m. A.T.
Lv. YARMOUTH	Mon., Wed., Fri. 9:00 a.m. A.T.
Ar. BAR HARBOR	Mon., Wed., Fri. 2:30 p.m. E.T.

Effective September 15, 1956 to June 24, 1957

L. E. Gerrish **Canadian National Railways**
Port Agent **Bar Harbor, Maine**



BETHEL

Bethel Ski Area, on route 25 close to town. 1,000 ROPE TOW. Lighted heated hut and lunch bar. Swan's Corner Slope, 3,000' width. 30 METER JUMP. Trail, 3,000' long, 250' wide with maximum grade, 33°. Vertical descent, 600'.

BINGHAM

Baker Mountain Area, 800' ROPE TOW. Trails and open slopes. Heated lodge and lunch bar.

THE CUNDY COTTAGE

Open All Year

HOME COOKED MEALS
COMFORTABLE BEDS
CONGENIAL ATMOSPHERE

Favorite Locale for Artists,
Photographers and Writers

BOAT SERVICE YEAR ROUND

Lobster Season, January 1 - June 25

Monhegan Island, Maine

Lincoln Motel

Lincoln

Maine

OPEN YEAR ROUND
HEATED — SHOWERS

Tel. Swift 4-2770
1/2 Mile So. of Lincoln
on Route 2

STATE POLICE STATIONS

The Maine State Police invite motorists to use its services for assistance and protection. Listed below are locations of Maine State Police stations. Use this list in case of accidents, road trouble, or information and assistance.

HEADQUARTERS—Augusta—Tel. MA 3-4561

Troop A, Kittery—Tel. ID 9-0922
Troop B, Scarborough—Tel. TU 3-4391
Troop C, Skowhegan—Tel. 7-3359
Troop D, Thomaston—Tel. 222

Troop E, Orono—Tel. 6-2122
Troop F, Houlton—Tel. 2261
Troop G (Maine Turnpike Patrol),
So. Portland—Tel. TU 3-4861

Pleasant Mountain SKI AREA

BRIDGTON, MAINE

SNOW CONDITIONS:

Northeast Exposure—
Best for holding snow.
Skiing — Late December to Early April.
Spring Skiing - - -
March and April.

FACILITIES:

4,300 ft. Double Chair Lift.

2,000 ft. Constam T-Bar Lift.

Rope Tow, serves beginners' slope.

Ski Lodge, two-story with balcony.

Snack Bar, hot drinks, good food.

Ski Shop, skis, bindings, accessories.

Ski School with competent instructors.

Rest Rooms, modern, comfortable.

Parking Area, for plenty of cars.



2000 FT.
CONSTAM
T-BAR
SKI LIFT

ACCESSIBILITY:

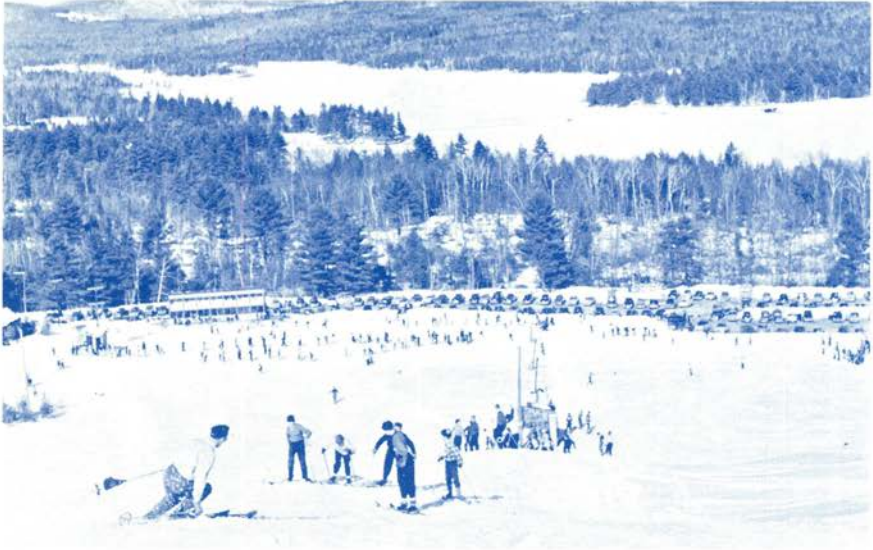
From Boston—Maine Turnpike to Portland and U. S. Route 302 to Bridgton. From North Conway—20 miles east on U. S. Route 302. Good Road $\frac{1}{4}$ mile in to slope.

THE ONLY CHAIR LIFT IN MAINE

ON U. S. ROUTE 302

6 Miles W. of Bridgton, Me. - 20 Miles E. of N. Conway, N.H.

150 MILES FROM BOSTON



BRIDGTON

Pleasant Mountain Ski Area, located just off U. S. Route 302, 6 miles west of Bridgton. Driving time from Boston is 3 hours. Take U. S. Route 1 or Maine Turnpike to Portland (exit No. 8 from Turnpike) thence on 302 to Bridgton. 4,300' DOUBLE CHAIR LIFT, 2,000 Constam T-BAR LIFT, 600' ROPE TOW. Two trails, expert and intermediate, $1\frac{1}{4}$ miles long. Serviced by Chair Lift and $\frac{1}{2}$ mile of trails served by T-Bar Lift also open slopes $\frac{1}{2}$ mile in length.

New $2\frac{1}{2}$ story ski lodge with glassed in balcony overlooking slopes. Lunch concession, modern plumbing, ski shop (rentals and sales) and Ski School. Ample parking facilities. Many over-night accommodations and restaurants nearby in Bridgton area (see advertisements pages 15 and 18). The Pleasant Mountain Ski Area is located in the famed Sebago-

(Cont. on Page 18)

RICHARDSON'S MOTEL

Route 302

Bridgton, Maine

18 Modern Units — Private Bath Weekly Rates for Ski Groups

Two large bunkroom units with recreation room.

Coffee Shop and TV Lounge

Tel. Midway 7-5571

$4\frac{1}{2}$ Miles to PLEASANT MOUNTAIN SKI AREA



**CHAIR LIFT
PLEASANT MOUNTAIN
(See Pages 14-18)**



**T BAR LIFT
SUGARLOAF MOUNTAIN
(See Pages 26-30)**

Dumar Lodge Motel

OPEN
YEAR
ROUND

18 miles from Portland — 15 miles from Bridgton on Route 302, principal route to all ski areas.

WINTER RATES — MEMBER AAA and EASTERN MOTELS

Ruth and Ray Burgess
Owners-Managers

RAYMOND, MAINE
TEL. 71-2

AGAWAM-KEZAR WINTER CAMP

Lovell

Maine

The fun of winter camping for families and groups of boys and girls is found at this comfortable Swiss chalet type lodge. Ice fishing-skating-tracking-cookouts.

Skiing at Pleasant Mountain nearby.

DAVE and PEG MASON

R. F. D. Lovell, Maine

Hotel Cumberland

Mrs. Stanley F. Bridge

Open Year Round

Tel. Midway 7-2862

Bridgton, Maine

Long Lake-Bridgton Region of southwestern Maine just a one hour drive from Portland. The area is open from December through April and the lifts operate every day from 9:00 A.M. to 6:00 P.M.

CAMDEN

Camden Snow Bowl, located in natural amphitheatre, 3 miles west of Village. 1,200' ROPE TOW services slopes and trails on Ragged Mountain. Community recreation area. Children's and beginner's slopes, skating, tobogganing, 20 meter jump. Area lighted for night-time use. Also cross country and snowshoe trails.



THE WAYSIDE GRILL

OPEN ALL YEAR

U. S. Routes 2 and 4

2 Miles West of Farmington

Seafoods — Southern Fried Chicken — Western Steaks

Ski Farmington's Titcomb Slope and Sugarloaf Mountain

KENNETH E. AMES, Owner

Tel. Farmington 2801

FARMINGTON

John Abbot Titcomb Memorial Ski Slope, located on Knapp Hill, 1½ miles from Town. 1,300' POMA-LIFT, 600' ROPE TOW. Open slope 1,500' x 450'. Trails and 30 meter jump. Children's slope and active children's program. Lighted Wed., Fri., and Sat. nights. Ski Lodge and lunch bar. Parking Area. Accommodations and restaurants nearby (See advertisers, page 19).

FORT KENT

Open Slopes located on U. S. Rt. 1. Two 1,500' ROPE TOWS service slope area.

Open All Year

MOON GLO MOTEL

HOT WATER HEAT

Tel. 4725

ROUTES 2 and 4

FARMINGTON

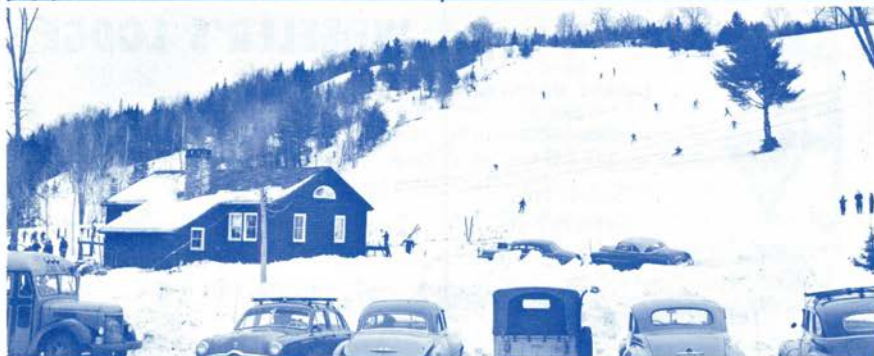
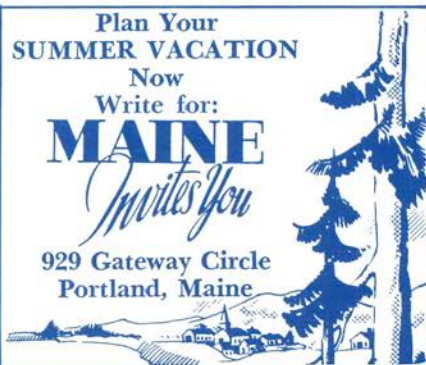
MAINE

Plan Your
SUMMER VACATION

Now
Write for:

MAINE
Invites You

929 Gateway Circle
Portland, Maine





FRYEBURG

See BRIDGTON listing.

GORHAM

Gorham Ski Slope, located on Rt. 25 in Village. Open slope skiing serviced by ROPE TOW. Lighted slope, warming hut.

GUILFORD

Standpipe Hill Slope. 500' ROPE TOW services $\frac{1}{4}$ mile open slope area. Also Trail, $\frac{1}{4}$ mile wooded run.

KINGFIELD

See SUGARLOAF MOUNTAIN listing.

LEWISTON

Hockey and skating on municipally operated rinks in Lewiston-Auburn area.

LIVERMORE FALLS

Spruce Mountain Ski Slope. 1,000' ROPE TOW services slope area. Warming hut. Also practice slope.



11 Miles
from
PLEASANT MOUNTAIN
and
CRANMORE
SKI AREAS

*Small Inn
Catering to
Family Groups*

Tel. Fryeburg 137

WHEELER'S LODGE

WHITING MAINE

—○—
Excellent Hunting and
Fishing Area
REASONABLE RATES
—○—

Howard and Catherine Wheeler
Proprietors

Open All Year



MADAWASKA

Madawaska Ski Slope, located in Grand Isle, just off U. S. Route 1. 2,000' ROPE TOW services slope area.

MILLINOCKET

Municipal Ski Slope located at Athletic Field. ROPE TOW, ski hut and lunch bar. Lighted slope and skating rink.

Black Cat Mountain Slopes in Katahdin Region. 1,500' ROPE TOW services 2,400' open slope area. Ski hut and lunch bar. Trails in area.

NEWFIELD

Bauneg Beg Ski Club Slope located 15 miles north of Sanford at Bond Mountain, Rt. 11 at Newfield. ROPE TOW, open slopes, ski hut.

PEMBROKE

Quoddy Ski Club Development. Open slope skiing. ROPE TOW, warming hut, lunch bar, parking area.

PITTSFIELD

Pittsfield Kiwanis Community Ski Slope, located 1 mile from center of Town, off Hartland Road. 500' ROPE TOW services 600' slope. 20 meter jump, warming hut and parking area.



HUNTING IN MAINE

is a special publication for the Maine nimrod. It tells you where and how to hunt both large and small game in the Pine Tree State, and contains a directory of many of Maine's better hunting camps and lodges.

Send for your free copy to:

MAINE PUBLICITY BUREAU

929 Gateway Circle

Portland, Maine



THE EASTLAND

PORTLAND, MAINE

Home of Radio Station WCSH and WCSH-TV

Maine's Largest Hotel — 730 Rooms

Fireproof - Modern - Friendly

Three Restaurants Two Cocktail Lounges Air Conditioned

ROOM RATES START AT \$3.50 SINGLE

Garage Connected

Radio In Every Room

500 Rooms With Television

For Reservations - - - Call SPruce 2-5411



The Popular
SMITH FARM
 for the finest
 FARMSTYLE COUNTRY FOOD

Telephone VA 9-3034
 WEST FALMOUTH, MAINE

ON ROUTE TO SUGARLOAF AND RANGELEY AREAS

A warm welcome is assured whether you stop for a snack or complete dinner. Visit our "Wishing Well" and turn the children loose in our special play areas.

ENJOY THE FINEST OF FOODS AT MODERATE PRICES

7 Miles from Portland
 on Routes 26 and 100

1 Mile North of
 Maine Turnpike - Exit 10

PORTLAND

Municipal Recreation Program includes skiing, skating, tobogganing. Skating ponds at Deering Oakes, Allen Avenue, Payson Park and Presumpscot Park maintained by City. Lighted and supervised, with warming huts and lunch concessions. Many accommodations and restaurants in Portland area. (See advertisers on pages 22 and 23).

Hurricane Ski Slope with 1,000' ROPE TOW in Cumberland, just outside City proper, 11 miles on Blackstrap Road. Slope, 1,100 feet long with vertical drop of 180'. Parking area at base of slope. (Also see GORHAM listing).

OPEN ALL YEAR

Maine Motel

606 Main Street
 South Portland, Maine

INSULATED — STEAM HEAT
 SHOWERS

Jct. U. S. Route 1 and Turnpike

Marjorie D. Leonard, Mgr. TEL. SP 4-1394

FALMOUTH HOTEL



DANCING
 NIGHTLY
 IN OUR
 LOUNGE

200 EXCELLENT ROOMS WITH BATH
 FALMOUTH HOTEL, INC.

212 Middle Street
 Portland Maine

Phone SPruce 3-8141



PRESQUE ISLE

Aroostook State Park Ski Area, located 6 miles south of Presque Isle, off U. S. Route 1. 600' ROPE TOW services Quoggy Joe Trail and 1,000' open slope area. Slope lighted. Trail, $\frac{1}{2}$ mile long with vertical drop of 620'. Ski lodge and lunch bar at base of slopes.

RANGELEY

Rangeley Lakes Region, skiing and cross country trails. Many rolling hills and mountains for touring. Snow conditions usually good early and late in season because of high altitude. Twenty-six miles from Sugarloaf Mountain.



AROOSTOOK STATE PARK

6 MILES SOUTH OF PRESQUE ISLE

$\frac{1}{2}$ Mile Trail — 800' Rope Tow — Lighted Slope

LUNCH BAR AT LODGE

ACCOMMODATIONS AVAILABLE IN PRESQUE ISLE

Linwood Delano, Custodian

Tel. Presque Isle 8340



RUMFORD

Scott's Mountain Ski Slope. 1,300' ROPE TOW services extensive open slope area.

Reider Christiansen Hill with 55 Meter Jump, rated as one of the finest in the East. Rumford is jumping and cross country center of Maine. Also 20 meter jump and 10 meter jump. 18 Kilometer and 30 Kilometer cross country trails.

STRATTON

Skating rink in Town. (See SUGARLOAF MOUNTAIN listing).

JOIN EASTERN



USEASA

33 Main Street
LITTLETON, N. H.

OPEN YEAR ROUND

LINNELL MOTEL

Modern 20 unit motel, forced hot water heat and wall to wall carpeting. Two miles west of Rumford on U. S. Route 2. Forty Miles to Rangeley Lake Region.

Mr. and Mrs. Raleigh Linnell

Tel. 1163-R



FISHING IN MAINE

is a special publication telling you where and how to catch the BIG ONES in Maine. It also contains information about many of Maine's better sporting camps and lodges.

Send for your free copy to:
MAINE PUBLICITY BUREAU

929 Gateway Circle

Portland, Maine



SKI "SUGARLOAF" it's the greatest!

SUGARLOAF MOUNTAIN KINGFIELD, MAINE

Rt. 27—1 ½ Hours from Portland
2 Hours from Bangor
4 Hours from Boston

ELEVATION—4,237 feet

SNOW FALL—140 inches (average)

SEASON— Dec. - May
(Snowfield skiing
to June 1)

TRAILS—

TOTE ROAD—Novice to intermediate—2 ½ miles—Snowfields to lodge.

WINTER'S WAY—Intermediate (upper) to novice (lower).

SLUICE—Expert

NARROW GAUGE—Expert (upper) to intermediate (middle) to novice (lower).

LIFTS—

Two T-Bars in tandem.

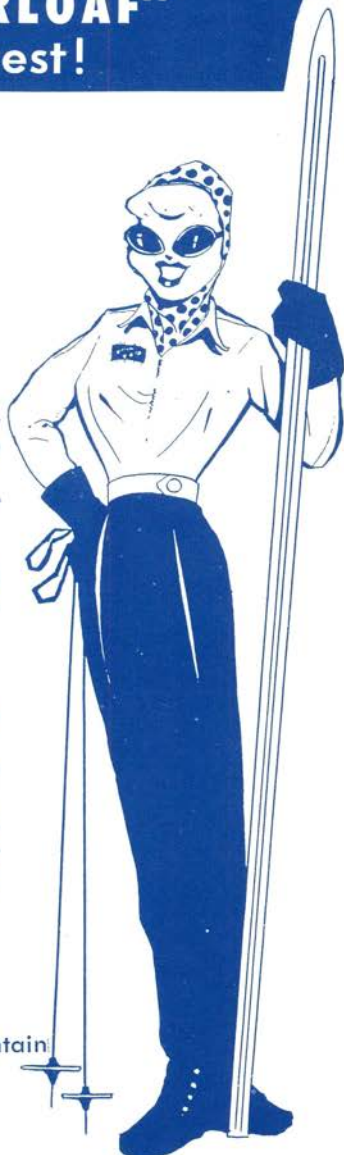
Lower lift: 3,640 feet (vertical rise 870 ft.).

Upper lift: 2,600 feet (vertical rise 950 ft.).

SKI PATROL—SKI SHOP—SKI SCHOOL
— PRACTICE SLOPE — (rope tow) —
CAFETERIA and WARMING HUT—SKI
CLUB LODGE with DORMITORY
ACCOMMODATIONS

FOR INFORMATION
call

"The Lodge" at Sugarloaf Mountain
Stratton, Maine, 34-3 or
Kingfield, Maine, 26-3



SUGARLOAF



SUGARLOAF MOUNTAIN

Sugarloaf Mountain Ski Area is Maine's newest major ski development, located off Route 27 half-way between Stratton and Kingfield. Two T-BAR LIFTS, 3,640' and 2,600' are set in tandem from the lodge to the snowfields. Sugarloaf Mountain has an elevation of 4,237 feet with an average snowfall of 140 inches providing a constant ski season from early December to mid-May and snowfields skiing into June. The lifts service four trails, an open slope and snowfield skiing. A cafeteria and Lodge faces the trails and slope area. Ski Patrol, Ski Shop, Instruction and Practice Slope. Accommodations and restaurants are nearby area (See advertisements, pages 27, 28, 29 and 30). Ample parking area at

(Cont. on page 30)



Good Clean Rooms and Beds
 Steam Heat — Running Hot and Cold Water
 "Known For Good Food and Drinks"

Welcome Skiers

Go 12 Miles and Get The Best

HOUSEKEEPING CABINS

COCKTAIL LOUNGE

DANCING

HUNTING FISHING

KERNS INN and RESTAURANT

Eustis, Maine



Sugarloaf inn
ski dorms

good food low rates
Kingfield, Maine
...land of deep snow

Sugarloaf's Newest
Retreat
Skiers
Welcome

- ARNOLD TRAIL HOTEL -
STRATTON, ME.

- Steam Heat
- Good Beds
- Good Food
- Skating Rink
- Dancing
- Cocktail
- Lounge

IN THE SUGARLOAF SKI AREA
THE HARVEY BOYNTON SKI SHOPS

*offer you complete
quality lines of skis—*

HEAD, KAESTLE, NORTHLAND, FISCHER, ETC.

Apparel

Imports and domestic for all

Accessories

For beginner or expert

Repair and rental service

Open 7 days a week

HARVEY BOYNTON SKI SHOPS

Kingfield, Maine

HILLTOP GUEST HOME

OVERLOOKING MOUNTAINS

Rooms

Meals

On Route 16, 1 mile from
Kingfield Village

HUNTERS and SKIERS WELCOMED

Marguerite and Arthur McCarthy



Open All Year

Kingfield, Maine

Telephone Kingfield 30-22

RECORD'S CAMPS

CARRABASSETT, MAINE

HUNTING — SKIING — FISHING

Accommodations in Main Lodge, Camps or Barracks

LUNCH — GROCERIES — SKI EQUIPMENT

Located 5 Miles from Sugarloaf Mountain

JOHN TAGUE, Prop.

Tel. Kingfield 34-15



DEER FARM CAMPS

Kingfield, Maine

**LOCATED 15 MILES FROM SUGARLOAF MOUNTAIN
SKI AREA — 2 MILES OFF ROUTE 27**

Individual log cabins with hot and cold running water,
electricity and automatic heat.

Rates: \$7.00 and \$8.00 per person per day.

Includes: Lodging, Dinner, Breakfast.

FOLDER ON REQUEST

E. W. WINTER, PROP.

Tel. Kingfield 26-11

Norton Homestead

**Twelve Miles From Sugarloaf Ski Area
KINGFIELD, MAINE**

**Tourists
Hunters**

**Mrs. Flora Norton Dexter
TEL. 58-3 ROUTE 16**

**Fishermen
Skiers**

OPEN ALL YEAR

VOSE MOUNTAIN LODGE

HUNTERS — SKIERS — FISHERMEN

Whether you hunt Vose Mt., ski Sugarloaf, or fish Stanley Stream you'll find comfortable quarters and reasonable rates at our lodge. Twelve miles from Sugarloaf ski area. Completely equipped house-keeping cabin, modern conveniences, accommodates six. Home-cooked food.

Mauno (Whitey) Kankainen

Tel. 15-22

base of ski slope and close to Lodge. Ski School with daily instruction available at Lodge.

WATERVILLE

Several skating rinks, ski slopes and snowshoe trails in area. Ice fishing, tobogganing. Winter events at Colby College.

WILTON

North's Hill Ski Slope, sponsored by the Wilton Ski Tow Association. 400' ROPE TOW services 500' slope. Extensive children's program.

BURGESS
SHOE STORE
WILTON, MAINE

Gateway
To

SUGARLOAF MOUNTAIN
SKI AREA

Tel. 5-8866

LOCAL OUTLET *Bam* OUTDOOR FOOTWEAR

OPEN ALL YEAR

WHISPERING PINES MOTEL

Free Continental Breakfast

SKI AT TITCOMB'S SLOPE
AND SUGARLOAF MOUNTAIN

Pond Road — off Route 2

1 mile west of

WILTON MAINE

Tel. 5-2227

LOOK
FOR



THIS
SIGN

STATE OF MAINE PUBLICITY BUREAU



INDEX TO ADVERTISERS

	<i>Page</i>
BANGOR	
Bangor House	12
BAR HARBOR	
Cadillac Motel	12
Elmhurst Inn	12
McKay Cottages	12
BRIDGTON	
Hotel Cumberland	18
Pleasant Mountain Ski Area	14
Richardson's Motel	15
CARRABASSET	
Record's Camps	29
EUSTIS	
Kern's Inn	27
FARMINGTON	
Moon Glo Motel	19
Wayside Grill	19
FRYEBURG	
Ye Old Inn	20
KINGFIELD	
Harvey Boynton Ski Shops	28
Deer Farm Camps	29
Hilltop Guest Home	28
Norton Homestead	29
Sugarloaf Inn	28
Sugarloaf Mountain Ski Area	30
LINCOLN	
Lincoln Motel	13
LOVELL	
Agawam-Kezar Winter Camp	18
MONHEGAN	
Cundy Cottages	13
MOUNT VERNON	
Mt. Vernon Lodge	11
NEWCASTLE	
The Newcastle Inn	9
PORTLAND	
Avis, Rent-a-Car System	2
Bicknell's	7
The Eastland	22
Falmouth Hotel	23
Maine Turnpike	3
Northeast Airlines	2
RAYMOND	
Dumar Lodge Motel	18
RUMFORD	
Linnell Motel	25
SOUTH PORTLAND	
Maine Motel	23
STRATTON	
Arnold Trail Hotel	28
WEST BATH	
New Meadows Inn	8
WEST FALMOUTH	
Smith Farm	23
WHITING	
Wheeler's Lodge	20
WILTON	
G. H. Bass & Company	10
Burgess Shoe Store	30
Whispering Pines Motel	30

Maine, particularly Bar Harbor
 T.A.B.



MAINE INFORMATION CENTER

Jct. U. S. Rt. 1 & Maine Turnpike

Kittery, Maine

We have attempted, in the pages of this book, to present the attractions of the State of Maine during the winter season for the Vacationist and the Sportsman in order to assist in planning where to go and where to stay, shop and eat.

You are cordially invited to make full use of all of the facilities of the State of Maine Publicity Bureau—free at all times—when planning your visit and after you arrive in our State.

Maine Information Centers are located, for your convenience, at:

KITTERY (pictured above)	Jct. Rt. 1 & Maine Turnpike
PORTLAND	Rt. 1, Entrance to City
AUGUSTA	Memorial Circle
BANGOR	Post Office Square

You are also invited to visit our out-of-State Information Center in the R.C.A. Building, New York City.

FOR FURTHER INFORMATION

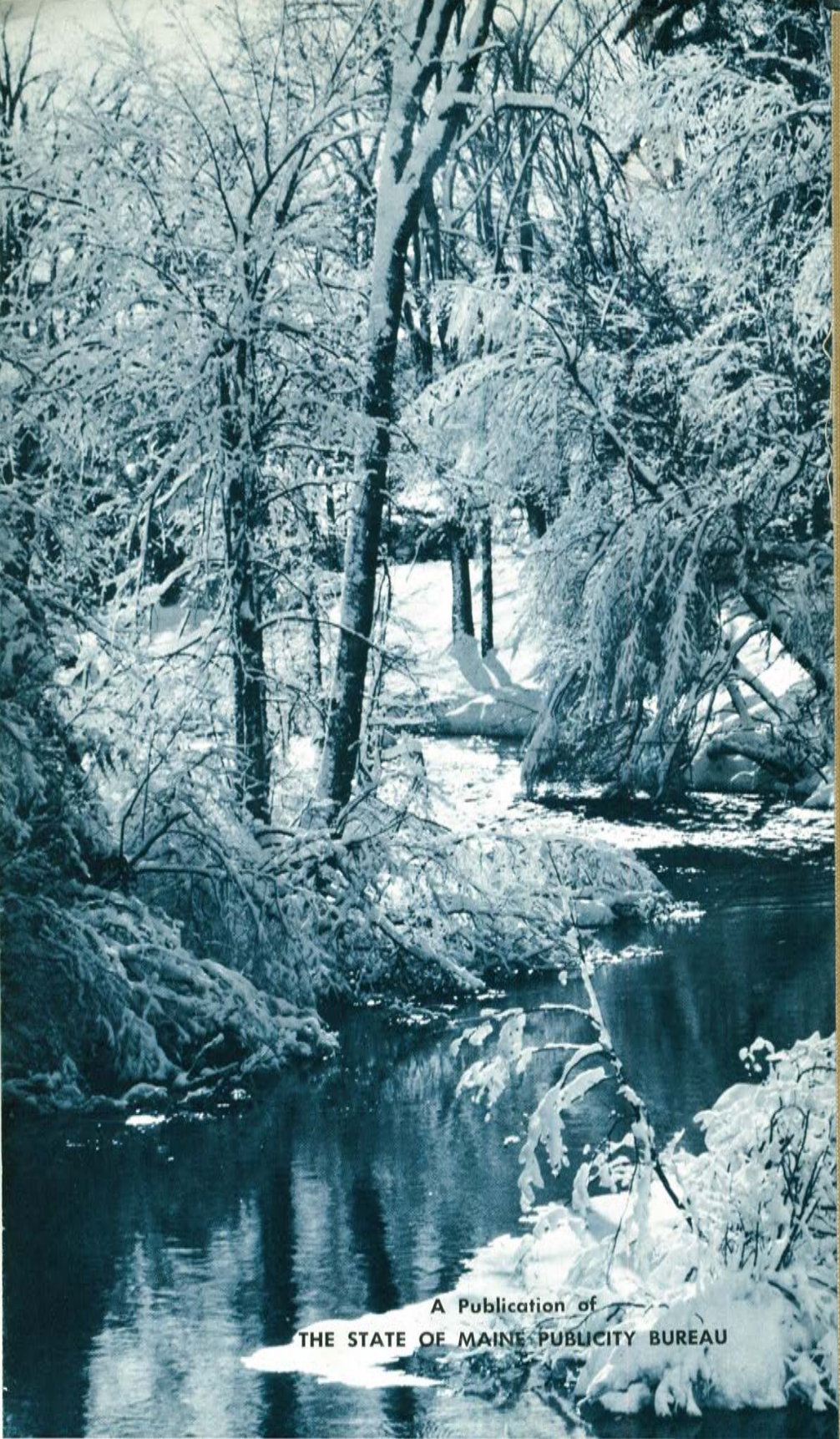
Regarding Maine Vacations, Maine Hunting and Fishing or Maine Products

Please Write:

STATE OF MAINE PUBLICITY BUREAU

929 GATEWAY CIRCLE

PORTLAND, MAINE



A Publication of
THE STATE OF MAINE PUBLICITY BUREAU