

1944

Dow Field, Bangor, Maine: Album of Photographs Relating to Dow Field, Bangor, Maine -- Volume 1, Part 2

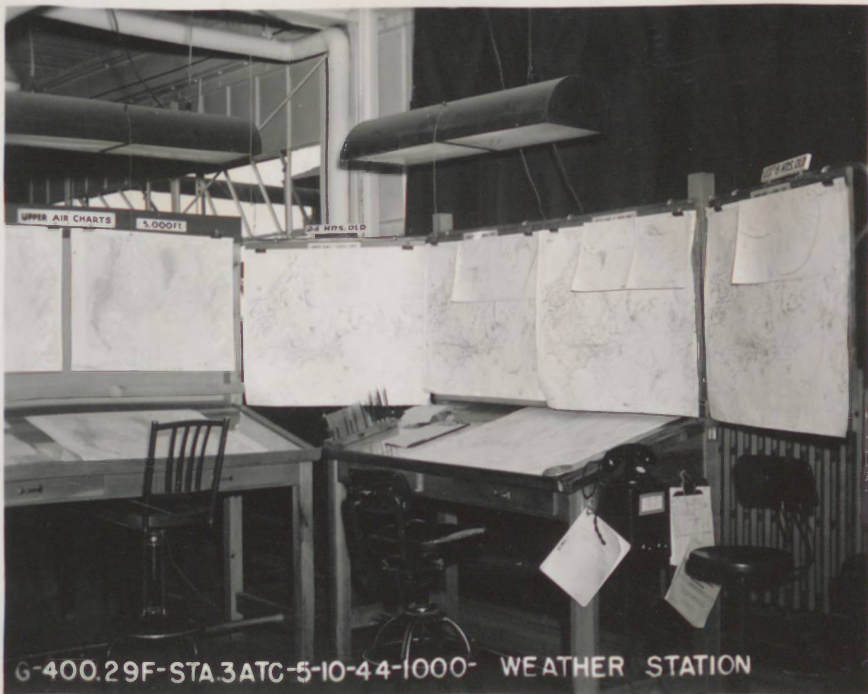
Annis G. Thompson



G-400.29C-STA3ATC-5-10-44-1000-WEATHER STATION

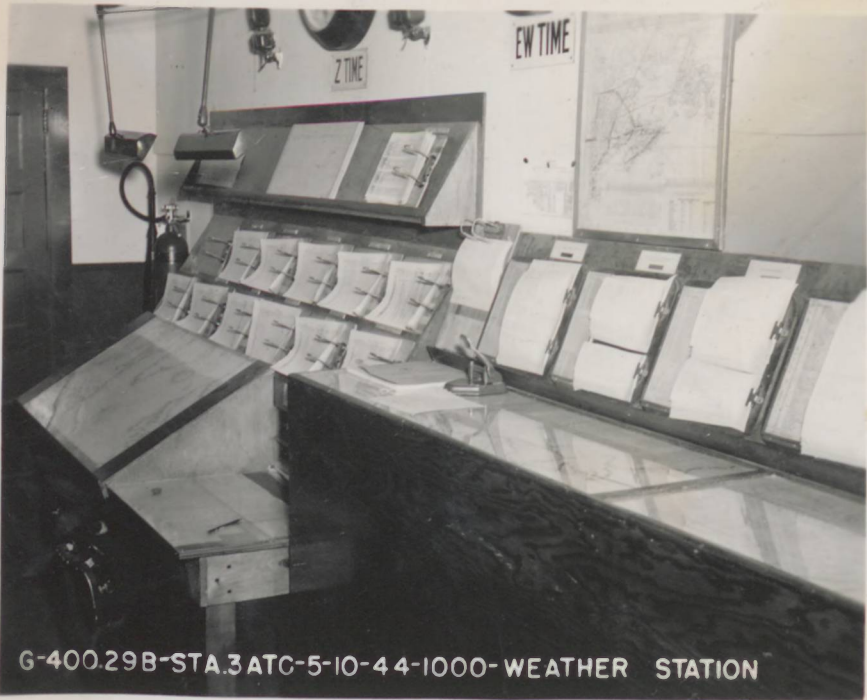


G-400.29E-STATION 3 ATC-5-10-44- WEATHER STATION





G-40029D-STA3ATC-5-10-44-1000-WEATHER STATION



G-400.29B-STA.3 ATC-5-10-44-1000-WEATHER STATION



1379 BU-3 AUG. 44-G-501.22- GRAY LADIES



1379 BU - 3 AUG. 44 - G-50122 - GRAY LADIES



1379 BU - 9 AUG. 44 - G- 501.32 - JAP - AMERICAN WOUNDED



1379 BU-3 AUG. 44-G-501.22- GRAY LADIES



1379 BU- 2 AUG. 44- G- 501.24- LT. COL. BERMAN



1379 BU - 2 AUG. 44 - G - 501.21 - LT. BALLINGER



1379 BU-14 AUG 54 G-501.41- MEDWAY FIRE (8)



1379 BU- 14 AUG. 44-G-501.41-MEDWAY FIRE (1)



1379 BU-14 AUG. 44-G-501 41- MEDWAY FIRE (9)




1379 BU 14 AUG 44 G-50141 MEDWAY FIRE (3)



1379 BU-14 AUG 44-G-501.41-MEDWAY FIRE (7)



1379 BU-14 AUG. 44-G-501.42-MEDWAY FIRE (5)

A black and white photograph showing the aftermath of a forest fire. The scene is filled with charred and broken tree trunks, some standing and others leaning. The ground is covered in ash and charred debris. In the background, a thick plume of smoke or steam rises from the forest. The overall atmosphere is one of destruction and desolation.

1379 BU-14 AUG. 44-G-501.41-MEDWAY FIRE (4)



1379 BU - 14 AUG. 44 - G-501.41 - MEDWAY FIRE (2)




1379 BU-14 AUG.44-G-501.41-MEDWAYFIRE (II)



1379BU-14 AUG 44-G-501.41-MEDWAY FIRE(12



1379 BU-14 AUG. 4 1950 G-501.41- MEDWAY FIRE (IO

A black and white photograph showing a charred tree trunk in the center, surrounded by other trees and dense foliage. The scene appears to be a forest after a fire, with smoke or steam visible in the background. The image is grainy and has a historical feel.

1379 BU-14 AUG. 44- G-501.41-MEDWAY FIRE (13)



1379 BU-14 AUG. 44-G-501.41-MEDWAY FIRE (6)



G-400.040-901A-7AB-4-Z-44-5P-PROCESSING



6-400.04D-801A-7AB-4-29-44-5P- PROCESSING



SORRY ALL CREWS ARE
RESTRICTED TO THE BASE

BRIEFING

TIME: 0730

PLACE: MAIN HANGER
2ND FLOOR FRONT

FOR: PILOT
COPILOT
INVESTIGATOR
RADIO OPS

ONLY FOR
SHIPS CALLED

MEMORANDUM
INVESTIGATOR WILL BRING

OCTAVY
MC-218
AIR PLANNING
PLOTTER
DIVIDER
RUB
PE

YOUR APO 16056-DA-~~000000~~1

IMPORTANT

TO: PORTLAND
NEW YORK, N.Y.
FROM: BELL-1000
CLASS: 1-1000

IMMEDIATELY AFTER ARRIVAL
ENGINEER WILL REPORT TO
DISPATCHER AT CONTROL DESK
FOR TRANSPORTATION TO
SAN TIDE, THEN TO JMW.

16056-DA-26

G-480-O4A-901A-7AB-4-29-44-5P-PROCESSING





ALLOTMENTS

0001-01 To the person of the film
0001-02 To the person of the film
0001-03 To the person of the film
0001-04 To the person of the film
0001-05 To the person of the film
0001-06 To the person of the film
0001-07 To the person of the film
0001-08 To the person of the film
0001-09 To the person of the film
0001-10 To the person of the film

CAMERAS
Sealed Here

0-400.07B-STA.3ATC-5-6-44-1500-PROCESSING OPERATIONS



G-400.048-901A-7A8-4-29-44-5P PROCESSING



G-40004E-901A-7AB-4-29-44-5P-P



G-400.04F-901A-7A2-44-5P-PROCESSING



G-400.04J-90IA-7AB-4-29-44-5P- PROCESSING



G-400.07G-STA3ATC-5-6-44-1500-PROCESSING OPERATIONS



G-400.07D-STA3ATC-5-6-44-1500- PROCESSING OPERATIONS



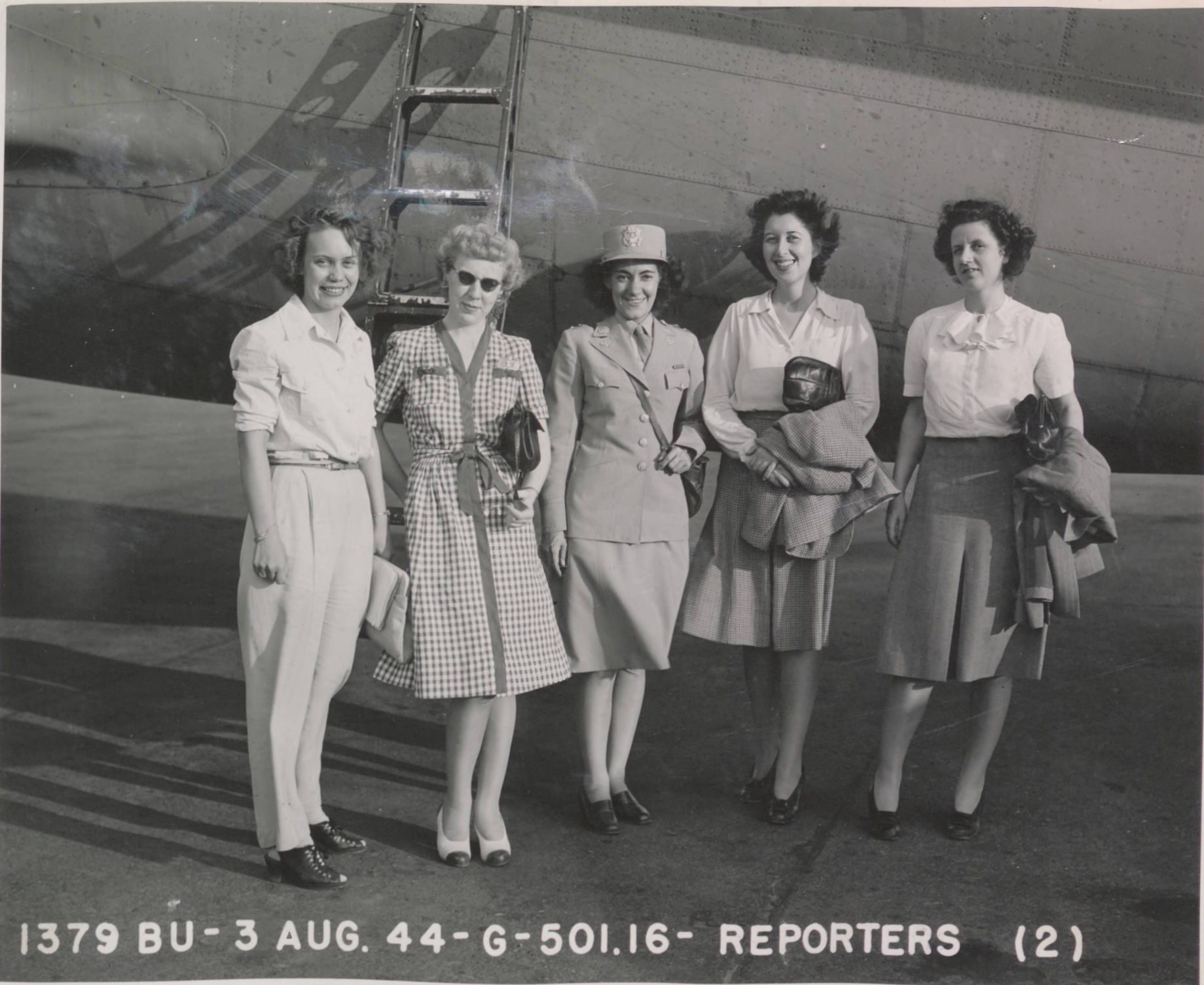
G-400.07A-STA.3 ATC-5-6-44-1500-PROCESSING OPERATIONS



G-40607H-STA.3ATC-5-6-44-1500-PROCESSING OPERATIONS



G-400.07F-STA 3ATC-5-6-44-500-PROCESSING OPERATIONS



1379 BU-3 AUG. 44-G-501.16- REPORTERS (2)



1379 BU- 3 AUG. 44-G- 501.16- REPORTERS (1)



G-500.59- STA3 ATC-DOW FIELD BAND AT AUDITORIUM(2)



COMMODORE W.S. SEWARD

379BU-14 AUG. 44-G-501.43-COL. JENSEN & AIR-



G-501.51 (2)





CAP Cadets at Dow Field. Some 85 CAP Cadets from all over Maine, 16 and 17 year olders, are going through a week's intensive training at Dow Field. Living a rigorous military life, with the strictest discipline, the boys will get a thorough background on all phases of the Air Corps routine. They're enjoying every minute of it, too.



CAP Cadets at Dow Field. Some 85 CAP Cadets from all over Maine, 16 and 17 year olders, are going through a week's intensive training at Dow Field. Living a rigorous military life, with the strictest discipline, the boys will get a thorough background on all phases of the Air Corps routine. They're enjoying every minute of it, too.



1379 BU - 13 AUG. 44 - G - 501.40 - MT. KATHADIN

(1)



1379 BU-13 AUG 44-6-501-40- MT KATHADIN (9)



1379 BU-13 AUG. 44-G-501.40 - MT. KATHADJIN (4)



1379 BU - 13 AUG. 44 - G-501.40 - MT. KATHADIN (10)



1379 BU-13 AUG 44-G 50140-MTKATHADIN 113



1379 BU - 13 AUG 44 - G 501 HQ - MT KATHADIN (12)



1379 BU-13 AUG. 44-G-501.40 MT. KATHADJN (16)



1379 BU-13 AUG. 44-G-501.40-MT. KATHADIN (II)



1379 BU-15 AUG 64 G-501-90 MTK&HADW 1141



1379 BU- 13 AUG. 44 - G-501.40 - MT. KATHADIN 1941



1379 B. 11 AUG 44 - 6 50140-MT. CATHLAMET (15)



1379 BU-13 AUG. 44 G-501. 40° MT. KATHADIN (8)



G-50115 (15)



G-501.15 (17)



6-50115 (1)



G-501.15 (4)



6-501.15 (19)



G-501.15 (20)







G-501:15 (3)



G-501.15 (12)



G-501.15 (6)



G-501.15 (5)



G-50115 (13)



G-501.15 (16)



6-501.15 (11)



G-501 15 (13)



G-50115 (2)



G-501.15 (14)



G-50115 (7)



G-501.15 (16)





6-50115 (9)





6-50115 (8)



G-501.49 (1)



G-501.49 (3)



G-501 49 (17)



G-501.49 (12)



G-501.49 (8)



G-501.49 (14)



G-501.49 (5)



G-501.49 (16)



G-501.49 (10)



G-50149 (11)



G-501.49 (7)



G-501.49 (15)



G-501.49 (6)





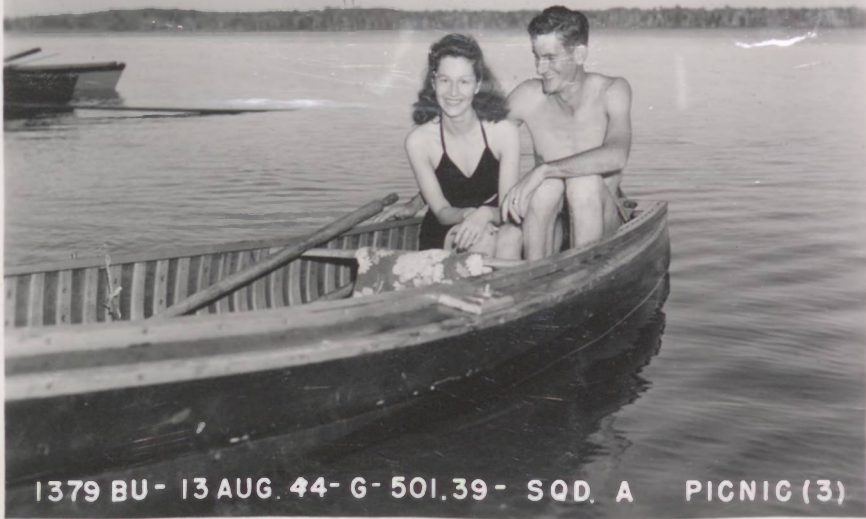
G-501.49 (9)



G-501.49 (6)



G-501.49 (18)



1379 BU- 13 AUG 44- G- 501.39- SQD. A PICNIC (3)



1379 BU-13 AUG. 44-G-501.39-SQD. A PICNIC (1)



1379 BU- 13 AUG. 44-G-501.39-SQD A-1
PICNIC (4)



1379 BU-13 AUG. 44- G-50139- SQD. A PICNIC (5)



1379 BU - 13 AUG. 44 - G-501.39- SQD. A PICNIC(7)



1379 BU-13 AUG. 44-G-501.39- SQD. A PICNIC (2)



1379 BU-13 AUG. 44-G-50139-SQD. A PICNIC (6)





6-50164

(2)



G-50164

(7)



G-501.64

(6)



G-501.64

(4)









G-501.64

(1)



G-501.64

(3)





6-501.46





1379 BU - 17 AUG. 44 - G-501.45 - SQD. A SOFTBALL TEAM





G-501.50 (1)







G-501.51 (1)



















G-501.92

(2)



G-501.92

(1)



G-501.92

(3)



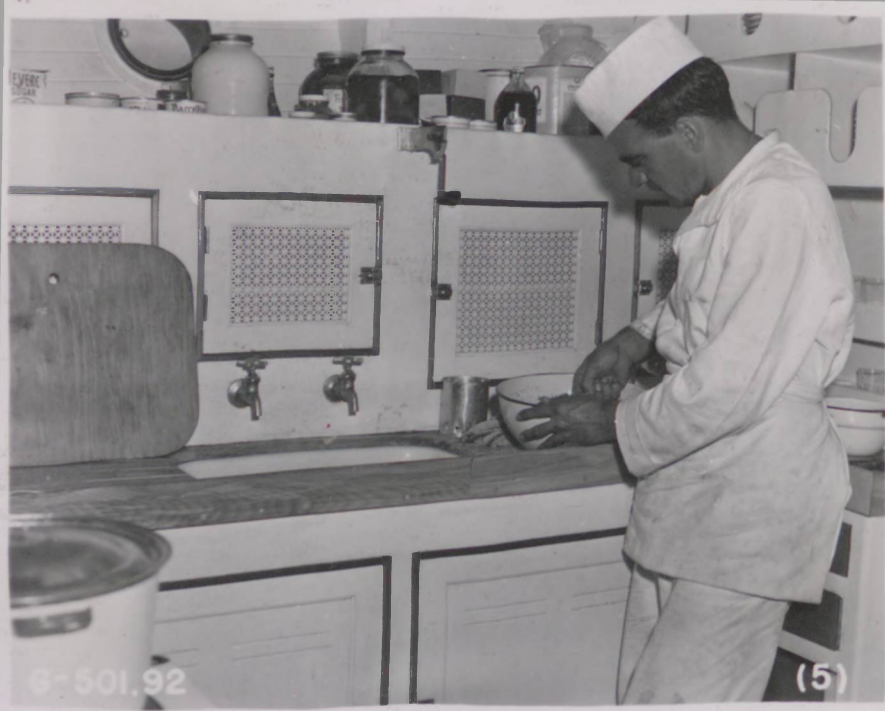
G-501.92

(4)



G-501.92

(6)





G-501.92

(7)



G-501.92

(8)



G-501.92

(11)



G-50192

(12)



G-501.92

(10)



G-501.92

(9)



G-501.92

(15)



G-501.92

(16)





G-501.92

(13)



G-501.92

(30)



G-501.92

(18)



G-501.92

(27)



G-501.92

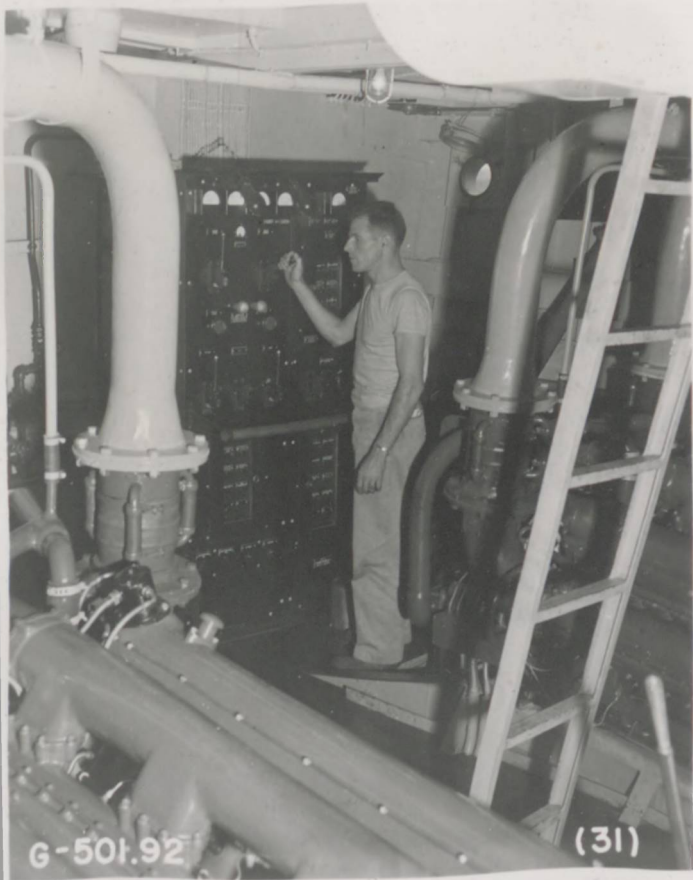
(19)



G-501.92

(25)





G-50t.92

(31)



G-501.92

(17)





G-501.92

(23)



G-501.92

(32)



G-501.92

(22)



G-501.92

(26)



G-501.92

(28)



G-50192

(24)



G-501.92

(29)





G-501.93

(22)



G-501.93

(10)





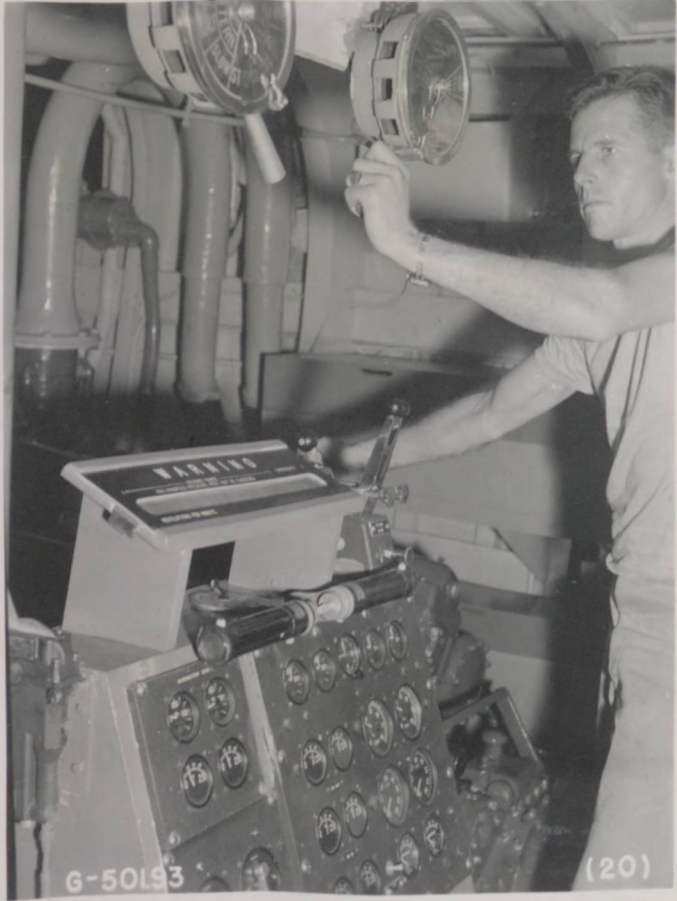
G-50193

(21)



G-50193

(7)



G-50L93

(20)



6-501.93

(19)



G-501.93

(9)



G-501.93

(5)





G-501.93

(14)



G-501.93

(12)



G-501.93

(18)



G-501.93

(15)



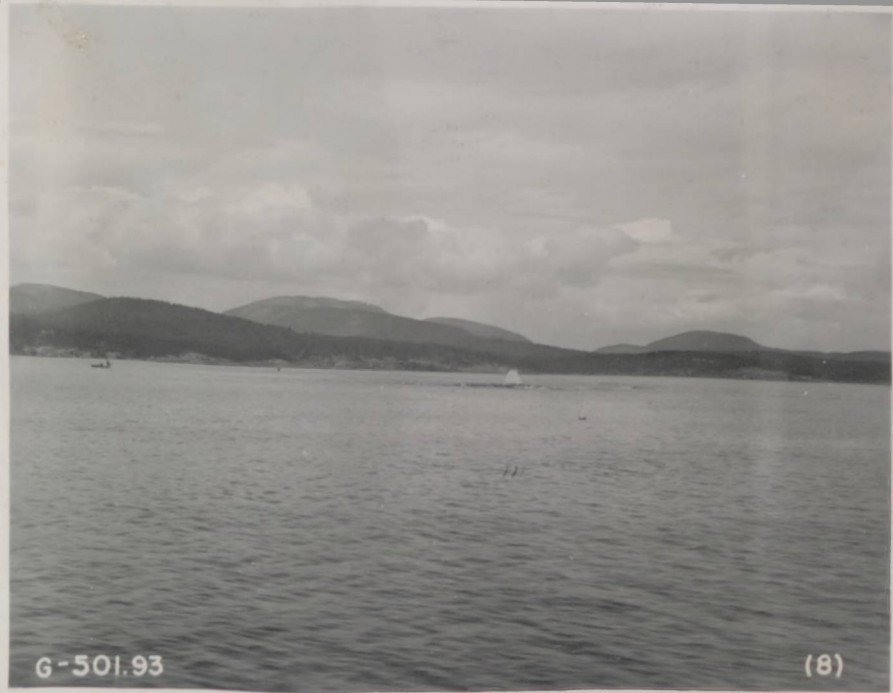
G-501.93

(16)



G-501.93

(14)



G-501.93

(8)



G-501.93

(2)



G-501.95

11



G-501.95

(6)



G - 501.95

(3)



G-501.95

(5)



6-501 95

(8)



G-501.75



G-501.95

(2)



6-50175

(4)



G-501.75

(3)



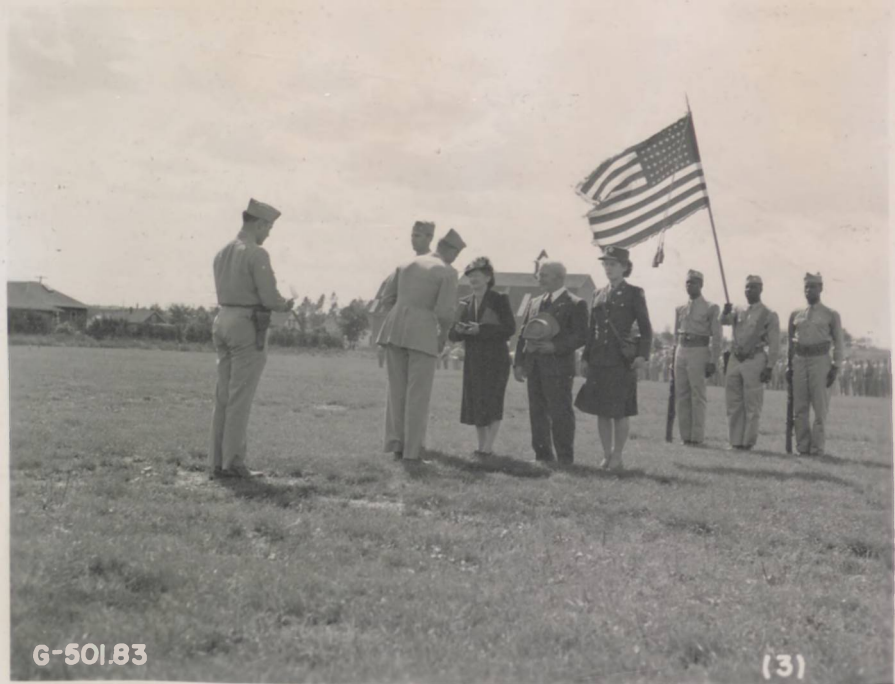
6-501.75

(5)



6-50175

(2)



G-501.83

(3)



G-501.83

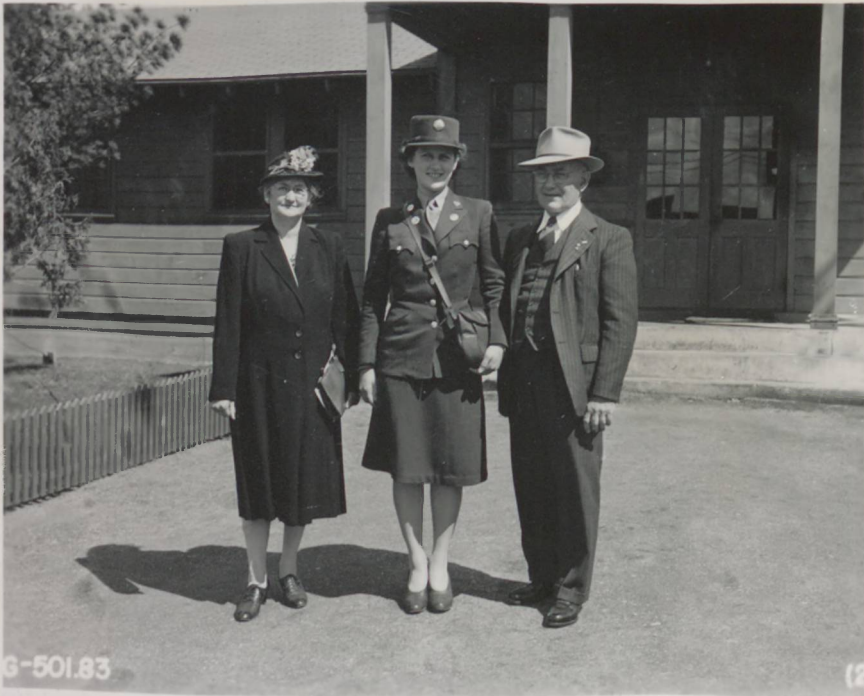
(74)





6-50183

(6)



G-501.83

(2





G-501.83

(5)



G-502.00

(2)



G-502.00

(1)



G-500.11



6-501.84

(3)

