

1950

The Bapstonian: 1950

Students of John Bapst High School

Follow this and additional works at: http://digicom.bpl.lib.me.us/jbhs_yearbooks

Recommended Citation

Students of John Bapst High School, "The Bapstonian: 1950" (1950). *John Bapst High School Yearbooks*. 2.
http://digicom.bpl.lib.me.us/jbhs_yearbooks/2

This Book is brought to you for free and open access by the John Bapst High School at Bangor Community: Digital Commons@bpl. It has been accepted for inclusion in John Bapst High School Yearbooks by an authorized administrator of Bangor Community: Digital Commons@bpl. For more information, please contact ccoombs@bpl.lib.me.us.

V373
.741
.J62b

THE

Bapstonian



1950

The

Bapstonian



PUBLISHED BY

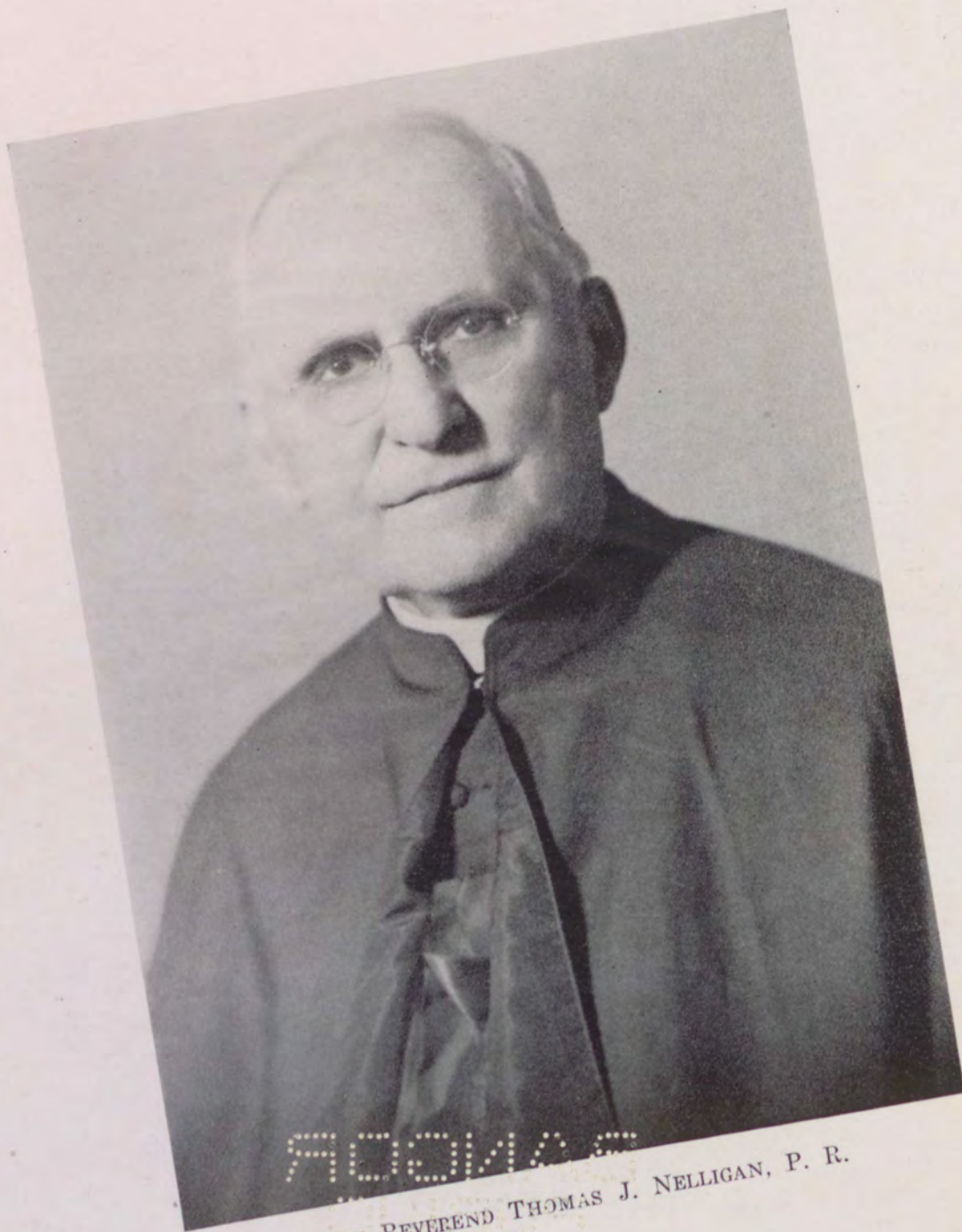
BANGOR

THE SENIOR CLASS

JOHN BAPST HIGH SCHOOL

BANGOR, MAINE

1950



RIGHT REVEREND THOMAS J. NELLIGAN, P. R.

We, the class of 1950, gratefully acknowledge the kindly interest and priestly guidance of our Reverend Pastors. It is entirely due to them that we have John Bapst today.



REV. JOHN F. NELLIGAN

D
E
D
I
C
A
T
I
O
N



We, the class of 1950, dedicate this book to
Sister Mary Carmel, who during four years
as principal of the girls' department, won our
lasting regard as an exemplar of the finest in
Catholic education.



John Bapst Alma Mater

John Bapst we've learned from thee
Many truths that sacred be
For watchful care and fealty
We give thanks to our school

Though years may dim our sight
We'll be mindful of the light
That instilled in our young minds
Our love for right

The Queen of Heaven



Mother Dear, O Pray for me
And never cease thy care
Till in Heaven eternally
Thy love and bliss I share.

FACULTY

BROTHER RUDOLPH, C.F.X.	Principal of Boys' Department
BROTHER STANISLAUS, C.F.X.	Religion, Science, Mathematics
BROTHER PATRICIUS, C.F.X.	Religion, Science, Mathematics
BROTHER MARIAN, C.F.X.	Religion, Latin, English, Social Studies
BROTHER CANICE, C.F.X.	Religion, English, Latin, History
BROTHER COLMAN, C.F.X.	Religion, English, French, Vocational Guidance
BROTHER MICHAEL JOSEPH, C.F.X.	Religion, English, Mathematics, History
BROTHER ERNAN, C.F.X.	Religion, Bookkeeping, Shorthand, Commercial Law
BROTHER BERTEL, C.F.X.	Religion, History, English, Science
MR. NATHANIEL CROWLEY	Typewriting, Vocational Guidance, Director of Athletics, Varsity Coach of Football, Basketball, Baseball
SISTER MARY LUKE	Principal of Girls' Department, Religion, Latin
SISTER MARY EVANGELINE	Religion, French, Geometry
SISTER MARY ERMINA	Shorthand, Typewriting
SISTER MARY AQUINAS	Religion, Science
SISTER MARY REGIS	Religion, Mathematics, Latin
SISTER MARGARET MARY	Religion, English, Mathematics
SISTER MARY ROSE	Religion, English, Social Studies
SISTER MARY HOSTIA	Religion, English, Bookkeeping
SISTER MARY RAYMOND	Religion, History, Social, Social Studies
MISS EILEEN O'LEARY	English, Dramatics

BAPSTONIAN STAFF



Standing:

R. Simpson
R. McGarry
J. McKay
Joan Eslin
W. Allen
W. Hughes

Sitting:

A. Winslow
B. Cormier
P. Peters
D. Mundy,



Standing: J. Soucy, M. McAllister, K. Tracey, J. McGrath.
Sitting: P. Thibodeau, M. A. Comer, B. Albert.

seniors



THE BAPSTONIAN 1950



BARBARA ANN ALBERT St. John's

Tall, slender blonde Barby . . . never a worry, never a care . . . future R. N. . . . prefers tall blond men . . . pet peeve, school . . . weakness, Hampden . . . flashing smile and a host of friends.

Choir 1, 2, 3, 4; Glee Club 1, 2, 3; League of the Immaculate Heart of Mary 1, 2, 3, 4; Dramatic Club 1, 2, 3, 4; Sodality 1, 2, 3; Girls' Club 3; *Crusader* 4; Cheerleader 3; *Bapstonian* 4.



SHIRLEY MAE ALLEN St. Mary's

Thoughtful . . . refuses to hurry . . . secretarial ambitions . . . lover of ease . . . doesn't worry about little things . . . takes life as it comes.

Immaculate Conception Sodality 1; Our Lady of Good Counsel Sodality 2, 3; Librarian 3; Choir 1, 3; Dramatic Club 2; *Crusader* 4; Girls' Club 3.



WALTER STEVEN ALLEN, St. John's

"Wally" . . . good natured, hard working, industrious . . . sports lover . . . likes skiing especially . . . favorite pastime eating . . . popular with all . . . intent on going to Maine.

Sacred Heart League 4; Basketball J. V. 2, 3; Football 3, 4; Softball 2; Intramurals 1, 2, 4; *Bapstonian* 4.

PAUL THOMAS AMBROSE St. John's

"Tom" . . . lean, lank and likable . . . a great humorist, always ready for a laugh . . . diligent student . . . lover of sports . . . hopes for a promotion in the A&P . . . undecided about college.

Sacred Heart League 4; Softball 2; Intramurals 1, 2.



Brother Michael Joseph giving his boys a brain workout in math.





RONALD VERNARD BAKER
Bradley, Me.

"Ronny" . . . genial, obliging student . . . honor student . . . hails from up north, Bradley . . . likes to do imitations, especially Vaughn Monroe . . . great Latin scholar . . . plans to attend Maine next fall
Sacred Heart League 4; Class Officer 1.



Sophomores take time out for study under the watchful eye of Sister Mary Regis.



BETTY JEAN BATES St. John's

Pixie-like personality . . . soda jerker par excellence . . . winning smile . . . host of friends . . . ever ready . . . friend to the end.
St. John's Choir 3; Glee Club 3; St. John's Sodality 3, 4; Vice-Prefect 4; Dramatic Club 3; Office 4.



ETHEL BIGELOW St. Mary's

Ready smile . . . talkative . . . jolly . . . never worries . . . dependable . . . one of the crowd . . . happy-go-lucky . . . loves to eat . . . "Bunny".

Immaculate Conception Sodality 2, 3, 4; St. John's Choir 2; St. Mary's Choir 3; Librarian 3.



MARIE ANNE BINNETTE
St. Joseph's, Old Town

Lady like . . . demure . . . amiable, raven-haired . . . friend to all . . . calm refinement . . . will don R. N. cap in three years . . . commuter from O. T. . . most likely to succeed . . . believer in "Spooks".

Vice-President 1; President 2; Secretary 4; Librarian 1, 2, 3, 4; French Club 2, 3, 4; Treasurer 2; Dramatic Club 3, 4; Vice-President 4; Glee Club 3, 4; *Crusader*.



MARIE LUCILLE BLAKE St. Mary's

Flaunts a happy nature . . . impeccably groomed . . . loves swimming . . . sunny disposition . . . sparkling smile . . . cute and lovable . . . distinctive bangs.

St. Mary's Choir 1, 2, 3; Glee Club 1, 2; League of the Immaculate Heart of Mary 2.



JEANNE DELIA BRODEUR

St. Joseph's, Old Town

Small in stature but big in heart . . . gay . . . loyal Baptist fan from the Canoe City . . . willing, able and helpful . . . sparkling vivacity.

Immaculate Heart of Mary League 2, 3, 4; Glee Club 3, 4; Girls' Club 3; Children of Mary Sodality 1, 2, 3, 4; C. Y. O. 1, 2, 3.



Rev. Father Nolan blessing Dick Higgins' throat at close of annual retreat on the feast of St. Blase.



JOHN EDWARD CALLINAN

St. Mary's

"Cal" . . . carefree, easy going . . . outstanding athlete . . . all-state in football . . . also valuable asset in baseball and basketball . . . favorite period, cafeteria . . . favorite occupation, sleeping . . . plans for a future in engineering.

Sacred Heart League 4; Football 2, 3, 4; Baseball 2, 3, 4; Basketball 3, 4, J. V. 2; Intramurals 1, 2.



BARBARA ANNE COMBER St. John's

Amazing wardrobe . . . face of an angel . . . vivacious cheerleader . . . velvet voice . . . plans for a future modelling career . . . our Emily Kimbrough.

Dramatic Club 1, 2, 3, 4; Choir 1, 2, 3, 4; Crusader Staff 1, 4; Cheerleader 3; Girls' Club 3; League of the Immaculate Heart of Mary 1; Glee Club 1, 2; Vice-President of French Club 4.



MARY ANN COMER St. Mary's

Light hair and dancing eyes . . . sweet and simple . . . charms you with her smile . . . winsome . . . lovable . . . at home on the stage.

Immaculate Conception Sodality 1, 2; Dramatic Club 1, 2, 3, 4; League of the Immaculate Heart of Mary 1, 2; St. Mary's Choir 1, 2, 3, 4; Glee Club 3; Librarian 2, 3.



ELIZABETH ANNE CORMIER St. Mary's, Orono

Presided freshman year . . . chosen Career Girl senior year . . . cute and popular . . . public speaker . . . glint of mischief . . . Oronoite . . . authority on the "U" . . . asset to any party.

League of the Immaculate Heart of Mary 1, 2, 3, 4, president 4; Class President 1; Girls' Club 3; Dramatic Club 3, 4; *Crusader* 4; *Bapstonian* 4.



CLIFFORD CORMIER St. John's

"Cliff" . . . studious and sincere . . . good man in football . . . likes to get Kelly into trouble, great fan of Boris Karloff . . . likes school and plans to go to Holy Cross.

Football 1, 3, 4; Intramurals 1, 2; Sacred Heart League 2, 4.

The unsung heroes of the Crusaders, J. Welch, J. Soucy, and R. Perry prepare to send the team on its way.



JOHN CRAWFORD St. Joseph's

"Jack" . . . friendly and quiet . . . man of the outdoors . . . serious about school . . . eager for final exams and graduation.

Football 3, 4; Intramurals 1, 3, 4; Sacred Heart League 4.



ROBERT COYNE St. John's

"Ficket" to his friends . . . noted for being quick witted . . . likes basketball . . . plans to attend Boston business school.

Class Officer 1, 2; Intramurals 1, 2, 3, 4; Sacred Heart League 2, 4.



CHARLES CUSHMAN St. John's

"Charley" . . . small but aggressive . . . studious and sincere . . . likes basketball and English . . . Husson bound.

Baseball 2, 3, 4; Intramurals 1, 2, 3, 4; Sacred Heart League 4.



EDWARD VINCENT DESROSIERS
Bradley, Me.

"Eddy" . . . quiet, likable, a thrifty lad . . . likes school . . . takes his studies seriously . . . hails from Bradley . . . could do without math . . . uncertain about college.

Sacred Heart League 4.



REGINALD CYR St. John's

"Reggie" . . . quiet and reserved . . . interested in all activities at Bapst, but especially social . . . commercial student . . . bound for Husson College.

Sacred Heart League 4.



LAWRENCE DEYOUNG St. Mary's

"Larry" . . . quiet and studious . . . earns his spending money at Carroll Cut Rate . . . plans to attend business college.

Sacred Heart League 4.



Ginnie Danforth enlightening classmates on the Colonial Period under Miss O'Leary's supervision.



KATHLEEN TRESSIE DWYER
St. John's

Unpredictable . . . lively personality . . . ready smile . . . live wire of class . . . wonderful sense of humor . . . hobby: keeping out of mischief.

Our Lady of Good Counsel Sodality 1, 2, 3, 4, Chairman of Publicity; St. John's Choir 1, 2, 3; Glee Club 3, 4; *Crusader* 4.



PHILIP DOYLE St. Teresa's

"Phil" . . . Hails from South Brewer . . . quiet and easy going . . . yet earnest . . . spends most of his time flying . . . goal is flying instructor.

Glee Club 1; Intramurals 1; Sacred Heart League 4.



JOAN MARIE ESLIN St. John's

Depth of mind . . . depth of heart . . . gentle mien . . . loveliness of face and spirit . . . scholar . . . collects friends . . . life promises rich reward.

Sodality 1, 2; Choir 1, 2, 3, 4; Class Secretary 2; Class Treasurer 4; League of the Immaculate Heart of Mary 3, 4; Dramatic Club 3, 4; Glee Club 1, 2, 3, 4; *Crusader* 4; *Bapstorian* 4.



MARY ELLEN FARWELL St. John's

Well dressed . . . slow, easy stride . . . friend always . . . happy nature . . . business school beckons . . . ever willing to give a helping hand . . . varsity cheerleader.

Choir 2, 3, 4; Dramatic Club 2, 3, 4, Treasurer 3; League of the Immaculate Heart of Mary 2, 3; Girls' Club 3; Le Cercle Amusons-Nous 3; Glee Club 2, 3; *Crusader* 4; Cheerleader 4.



FRANCIS JOSEPH GAUDET

St. John's

"Franny" . . . a friendly punster . . . good natured and cooperative . . . happy go lucky guy . . . likes all sports . . . interested in everything and everybody . . . next destination, Maine University.

Sacred Heart League 4; Intramurals 1, 2, 4; J. V. Football 1; Softball 2.



MELVIN GEAGAN

St. John's

"Mell" . . . to his classmates . . . likes working . . . doesn't like school too much . . . likes to argue with teachers . . . able man in football.

Football 2, 3, 4; Sacred Heart League 4.

Nat Crowley welcomes next season's co-captains D. Tremble and K. Harvey. Wishing them luck are veterans T. Mahaney and J. Callinan.



VICTORIA MARY GRANGEL

St. Mary's

"Vicky" . . . talented pianist for Choir and Glee Club . . . energetic enthusiasm . . . hair and heart of gold . . . remembered as a ballerina's press agent.

Choir 1, 2, 3, 4; Dramatic Club 1, 2, 3; Glee Club 1, 2, 3, 4; Girls' Club 3; Crusader 3, 4; Sodality 1, 2, 3, 4; Banker 1, 2, 3, 4; Le Cercle Amusons-Nous 4.



PAUL GOODY

St. Teresa's

"Paul" . . . softspoken . . . another Brewerite . . . good man to have around . . . starred in football, baseball, and basketball . . . capable man with the books.

J. V. Basketball 2, 3; Football 4; Baseball 3, 4; Sacred Heart League 4.



BARBARA ELEANOR GROSS St. John's

Natural beauty . . . remembered for work in history play senior year . . . a follower any leader appreciates . . . spirited personality . . . vocalizer

Choir 1, 2, 3, 4; Sodality 3, 4; Glee Club 2; Le Cercle Amusons-Nous 3; League of the Immaculate Heart of Mary 1; *Crusader* 4.



MARY TERESA HATCH St. Mary's

Petite . . . noted equestrienne . . . hit of fashion show in junior year . . . Hampden contribution . . . famous for dancing dimples . . . artist.

St. Mary's Choir 1, 2, 3, 4; League of the Immaculate Heart of Mary; Dramatic Club 3, 4; Basketball 1; Girls' Club 3; *Crusader* 4; St. Mary's Sodality 1, 2, 3, 4.



DONALD HIGGINS St. John's

"Don" . . . ready, willing and dependable . . . earnest and capable . . . delights in plaguing Tesseo . . . earns his spending money at A. & P. . . college for a few years.

Sacred Heart League 4.

The morning after the night before. John DeRoche, another unsung hero, makes with the mop.



RICHARD HIGGINS St. Mary's

"Dick" . . . pleasant earnest worker, great rooter for Bapst . . . starred in football . . . president of class . . . self-confident . . . plans to attend Maine Maritime Academy.

Football 1, 2, 3, 4; Baseball 1, 3; Class Official 3, 4; Sacred Heart League 4.



WILLIAM THOMAS HUGHES, JR.
St. John's

"Bill" . . . easy going, yet earnest . . . top commercial student . . . spends his spare time working at the Eastern Maine General Hospital . . . Navy bound.

Sacred Heart League 4; Intramurals 1, 4; *Bapstonian* 4.



MARY ELLEN IRVINE St. John's

Tailored elegance . . . popularity abounding . . . commutes from Canada . . . lover of red-heads . . . recognized by her famous car.

French Club 3, 4; Vice-President 3; Glee Club 1, 2; St. John's Choir 1, 2; League of the Immaculate Heart of Mary 1, 2, 3.



ARTHUR JONES Old Town, Me.

"Art" . . . smallest of the class, but can take care of himself in every way . . . plans to attend Notre Dame . . . ambition to have a band in later life.

Sacred Heart League 4.

Brother Marian coaches John Quine on the whys and wherefores of Latin.



MARY CONSTANCE KELLEHER
St. Mary's

Ladylike . . . quiet . . . carefree . . . "Mimi" . . . sports enthusiast . . . pet pastime: horses . . . always vanishes at 1:00 . . . best soda-jerk in town.

Dramatic Club 1, 2, 3; Choir 1, 2, 3, 4; *Crusader* 4; League of the Immaculate Heart of Mary 1, 2, 3; St. Mary's Sodality 1, 2.



DANIEL KING Bradley, Me.

"Danny" . . . quiet and sincere . . . silence is golden . . . hails from Bradley . . . plans to attend prep school.

Sacred Heart League 4.



GERALD FRANCIS KELLY

St. Mary's

"Gerry" . . . good student . . . noted for his dry wit . . . likes bookkeeping . . . earns his pin money at Gallagher's Market . . . Holy Cross beckons.

Sacred Heart League 4; Class Official 1; *Bapstonian* 4.



Sister Mary Aquinas' General Science class receives expert advice from old timer Betty Cormier.



RICHARD PAUL LACHANCE

St. John's

"Lucky" . . . Comes all the way from Veazie to Bapst . . . quite a chemist . . . known as the little "question box" . . . the proud owner of a whizzer . . . hopes to go to Maine.

Sacred Heart League 4.

MURIEL MAUREEN LAVIGNE

St. Mary's

Warm-hearted . . . a smile gets her a long way . . . specializes in songs and jokes . . . winsome charms . . . never a dull moment with "La La" around . . . helpful.

St. Mary's Choir 1, 2, 3, 4.





JOANNE ANTONIE LEBEL St. Mary's

Talented pianist . . . trim . . . efficient . . . mixes a mean soda . . . remembered for mock ballet in "Coffee Party" . . . always smiling.

Dramatic Club 1, 2, 3, 4; Choir 1, 2, 3, 4; Immaculate Heart of Mary League 2; Girls' Club 3; *Crusader* 4; Glee Club 1; St. Mary's Sodality 1, 2, 3, 4; French Club 4.



Is this next year's scrub team or first string? Shown here are: D. Mundy, M. McAllister, C. Ouellette, I. McGillicuddy, B. Cormier, L. Paradis, R. Ferris C. Roy, J. Thibodeau P. Trefethen at the football banquet.



JOSEPH DENNIS LEEN St. John's

"Joe" . . . earnest and capable . . . a great competitor . . . master of pinball machines . . . likes typing . . . plans to go into the Navy.

Intramurals 1, 2, 3, 4; Sacred Heart League 4.



JUDITH ELLEN LEIGHTON St. John's

Gay, fun-loving . . . vivacious cheerleader . . . pixie-like personality . . . noted thespian . . . outstanding in "Growing Pains" . . . daughter of "Veazie" . . . host of friends . . . U. of M. beckons.

St. John's Choir 2, 3, 4; Glee Club 2, 3; League of the Immaculate Heart of Mary 2, 3, 4; Dramatic Club 2, 3, 4; Class Secretary 3; *Crusader* Editor 3; Cheerleader 3; Girls' Club 3.



ROSEMARY LEPAGE St. John's

Popular . . . future plans: to run an electrical appliances shop . . . "It is the small things in life that count" . . . witty . . . always carefree.

St. John's Sodality 1, 2; Choir 1, 2; League of the Immaculate Heart of Mary 1, 2, (Representative of Homeroom in Freshman year); *Crusader* Staff 3, 4; Girls' Club 3.

JAMES FRANCIS LYNCH

St. John's

"Jimmy" . . . carefree, likable lad . . . singer de luxe . . . future manager at the Essex Street Cash Market . . . takes great pleasure in annoying Jones.

Basketball Manager 1, 2; Intramurals 1, 2, 4; Sacred Heart League 4.



THOMAS JOSEPH MAHANAY

St. John's

"Tom" . . . attentive student . . . intelligent . . . never seen without a smile . . . capable athlete . . . will be missed next fall on the gridiron . . . college uncertain.

Sacred Heart League 4; Football 2, 3, 4; Basketball 2, 3, 4; Softball 2; Class Officer 1, 2.



JOYCE ANN LEVEILLE St. John's

Dark-eyed beauty . . . loves movies . . . aims to be an R. N. . . . sociable . . . eyes on "Maine" . . . book fiend . . . baby-clean complexion . . . appreciates the finer things in life.

St. John's Sodality 1, 2, 3, 4, Chairman 4; Choir 1, 2, 3; Glee Club 2, 3, 4; Crusader Staff 4; Girls' Club 3.



ELEANOR CATHERINE MARSHMAN

St. John's

Friendly . . . seldom perturbed . . . quiet . . . thoughtful . . . lover of ease . . . nursing will be her career . . . delights in reading and movies.

St. John's Sodality 1, 2, 3, 4; Dramatic Club 1, 2, 3, Treasurer 2; Glee Club 1, 2; Girls' Club 3; Crusader Staff 3, 4; French Club 4.

Mr. Guite helps J. Cushing, C. Shanley, A. Vickers, S. Perry, B. Pooler, stretch waistlines after morning's workout in classes.





CARMEN HAZEL MARTIN St. Mary's

Boundless wit . . . everybody's pal . . . motor cycle fan . . . favorite period: recess . . . amazing character actress . . . wants to settle in Vermont.

Choir 1, 2, 3, 4; Sodality 1, 2, 3, 4; Dramatic Club 1, 2, 3, 4; Publicity Manager 4; Glee Club 2; Girls' Club 3; *Crusader* 4.



WILLIAM HALE MAYO St. Teresa's

"Willy" . . . ever smiling . . . full of pep . . . small but aggressive . . . reliable, pleasant, earnest worker . . . a gift from Orrington . . . never misses a Bapst game.

Sacred Heart League 4; Softball 2; Intramurals 2, 4; Class Officer 2; *Bapstonian* 4.



Dolores Mundy, candidate for Junior City Council, looks on hopefully while B. Gross, P. Bosse, B. Willette, and E. Conley cast votes.



FRANCES MADELYN McALLISTER

St. John's

Zestful . . . successful Latin scholar . . . loves life and fun . . . plans to retire to South Brewer someday . . . agreeable . . . peppy cheerleader . . . plans to enter the U. of M. next September . . . our "Madelyn".

St. John's Sodality 3, 4; Glee Club 1, 2; Dramatic Club 1, 2, 3, 4; Choir 1, 2, 3, 4; French Club 3; Girls' Club 3; *Crusader* Staff 4; *Bapstonian* Staff 4; Cheerleader 4.



MARGARET HELEN McDONALD

St. Mary's

Dependable . . . loyal . . . sincere . . . a ready heart . . . a willing hand . . . friend in need . . . kind word for all . . . quiet and ladylike.

Glee Club 1; Immaculate Conception Sodality 2, 3, 4.



DANIEL JOSEPH MCLEOD

St. John's

"Fred" . . . Carefree, happy go lucky . . . likes to keep the class happy . . . can always be seen with McKenzie . . . never lets his studies interfere with his outside activities . . . next year, Maine.

Sacred Heart League 4; J. V. Basketball 2, 3; Softball 2; *Crusader* 2.

MARGARET ANN MORAN St. John's

Gracious . . . warm friendliness . . . witty and gay . . . happy-go-lucky . . . becoming blush . . . mischievous gleam in her eye . . . quiet nonchalance . . . a natural beauty.

St. John's Sodality 1, 2, 3, 4; Choir 1, 2, 3; Glee Club 2; Dramatic Club 1, 2, 3; Girls' Club 3; *Crusader* Staff 4; Librarian 3; Publicity Chairman of Sodality 2, 3, 4.



Problems and theorems seems easy to J. Hayes.
Brother Patricius looks on approvingly.



SYLVIO JAMES MORNEAU

Lille, Me.

Friendly, quiet, sincere . . . serious about school . . . always willing to lend a hand . . . comes to school every day from Old Town in his Crosley . . . undecided about college.

Sacred Heart League 4.

JOHN PETRIE MORRILL

St. Teresa's

On the quiet side, carefree . . . rabid Bapst follower . . . can always be seen at Bapst's basketball games, first row, balcony . . . always looked for more holidays . . . will probably be your local drug-gist someday.

Sacred Heart League 4; Softball 2.





"Accuracy is more important than speed," reminds Sister Mary Ermina. Connie Ouellette looks doubtful.



RONALD EDWARDS MCGARRY
St. John's

"Ronnie" . . . good natured, sociable, cooperative . . . earnest student . . . diamond devotee . . . likes to see Bapst beat Bangor . . . will take up engineering at Maine.

Sacred Heart League 4; Intramurals 1, 2, 4; Softball 2; *Bapstonian* 4; Class Officer 2, 3.



JAMES G. MCGRATH St. John's

"Jimmy" . . . ever smiling . . . always ready to help . . . not the quietest boy in the class . . . likes English literature . . . and history . . . plans to attend Radio School in Boston.

Football 1; Intramurals 1, 2; Sacred Heart League 2, 4; *Bapstonian* 4.



JOHN EDWARD MCKAY St. John's

"Chuck" . . . friendly, helpful, always willing to lend a hand . . . faithful Bapst follower . . . likes to read . . . will be off for Maine next year . . . prospective engineer.

Sacred Heart League 4; Softball 2; Intramurals 1, 2, 4; Football 2; *Bapstonian* 4.



WILLIAM IRVING MCKENZIE
St. John's

"Billy" . . . relaxed, takes life easy . . . the life of the party, never a dull moment when Billy's around . . . likes basketball and baseball . . . going to Maine next fall.

Sacred Heart League 4; J. V. Basketball 2, 3; Softball 2; Intramurals 1.



MARY BERNADETTE MULLINS
St. Mary's

Able business manager . . . capricious . . . delightful to know . . . merry laugh . . . jovial . . . carefree "Detta".

St. Mary's Choir 1, 2, 3, 4; Glee Club 1, 2; League of the Immaculate Heart of Mary 1; Immaculate Conception Sodality 1, 2, 3, 4.



BARBARA ANN MURRAY St. John's

Loyalty is her policy . . . good sport . . . active . . . insists on punctuality . . . special seat at Bapst games . . . mistress of shorthand . . . friendly "Barby".

St. John's Choir 1, 2, 3; Glee Club 1, 2; St. John's Sodality 1, 2, 3, 4.



DOLORES LORAINE MUNDY
St. Teresa's, South Brewer

First lady of the Dramatic Club . . . hails from South Brewer . . . waged a brilliant campaign for Junior City Council and won . . . intellectual . . . natural . . . the editor.

Choir 2, 3, 4; League of the Immaculate Heart of Mary 3; Girls' Club 3; Dramatic Club 3, 4; President 4; Le Cercle Amusons-Nous 3, 4; *Crusader* 4; Glee Club 3; Junior City Council 4; Librarian 4; *Bapstonian* co-editor 4.

What will it be, Bob, potato chips or a candy bar?



WILLIAM EDWARD NELLIGAN, JR.
St. John's

"Billy" . . . thinks nurses are nice . . . earns his pin money at the Eastern Maine General Hospital . . . quiet and studious. The Navy beckons.

Glee Club 1; J. V. Football 1; Sacred Heart League 4.



Mr. Crowley has his class spellbound with the movie he is showing.



MARTIN DONALD NORRIS

St. John's

"Don" . . . lean, lank, and likable . . . interested in chemistry . . . likes basketball . . . not too fond of girls . . . main pastime is working with a chemistry set . . . plans to follow in his brother's footsteps.

Intramurals 1, 2, 4; Sacred Heart League 4.



BETTY JANE NOVARRO

St. Joseph's, Old Town

"A friend in need is a friend indeed" . . . noted for her wise sayings . . . class dreamer . . . loves a good car and good gum . . . ever-ready smile.

League of the Immaculate Heart of Mary 1, 2; Girls' Club 3, Treasurer; Dramatic Club 2; *Crusader* 4, Assistant Editor.



MARY GERTRUDE O'BRIEN

St. John's

Habitual smile . . . carefree . . . friendly . . . loves excitement . . . lively . . . ardent Bapst rooter . . . "Gertie" . . . hobby: talking to herself.

League of the Immaculate Heart of Mary 2; *Crusader* 4.



JAMES LEARY PERRY St. Mary's

"Jim" . . . good student . . . takes life easy . . . never worries . . . well liked by all . . . great follower of Bapst . . . likes to get into the thick of school activities . . . headed for Maine's agricultural course.

Sacred Heart League 4; Football 3, 4; Softball 2; Class Officer 2; Intramurals 4; *Bapstonian* 4.



MARGARET ANN PERRY St. John's

"Peggy" . . . ready wit . . . dependable . . . has a yen for Latin America . . . impeccably groomed . . . a lady true and fair . . . traveler.

St. John's Sodality 1, 2, 3, 4; Choir 1, 2; League of the Immaculate Heart of Mary 2, 3, 4, Secretary 4; Dramatic Club 1, 2, 3; French Club 3; Glee Club 1, 2; Girls' Club 3; *Crusader* Staff 4.



ROBERT PERRY St. Mary's

"Bob" . . . a little guy with big ideas . . . likes all kinds of sports . . . Nat's righthand man, modest and sincere . . . to attend business college.

Basketball and Football Manager 3, 4; Sacred Heart League 4; Intramurals 1, 2, 3, 4.



PRISCILLA ANNE PETERS
St. Joseph's, Brewer

Cheerful, little careful . . . ever smiling . . . everyone's friend . . . enjoys dancing . . . hobby, writing . . . personality girl.

Glee Club 2, 3, 4; Librarian 2; Dramatic Club 3; *Crusader* 4; Co-Editor, *Bapstonian* 4.



MARIE RITA PICARD
St. Joseph's, Old Town

Reliable . . . genial . . . one of our French mam'selles . . . always ready for a laugh . . . seldom disturbed . . . driving lessons at reasonable rates.

Class officer 1; French Club 2, 3, 4; Dramatic Club 3, 4; St. Joseph's Sodality 1, 2, 3, 4; *Crusader* 4.

The cheerleaders seem a little tipsy.





CONSTANCE CARALYN POOLER

St. John's

Outstanding leader . . . sweet . . . petite . . . Connie . . . ever willing to give a helping hand . . . executive ability . . . whiz at Latin . . . true blue . . . personality plus

Vice-president 2, 3, President 4; St. John's Sodality 1, 2, 3, 4; Treasurer 2; Vice-prefect 3, Prefect 4; League of Immaculate Heart of Mary 3, 4, Vice-president 3; Girls' Club 3; Dramatic Club 1, 2, 3, 4; Secretary 3; French Club 3; Junior City Council 4.



GREGORY POOLER

St. John's

"Greg" . . . favorite occupation is sleeping . . . small in stature but large in heart . . . a good athlete in his own right . . . drives one of his father's trucks in his spare time . . . Goal is Holy Cross.

Basketball 3, 4; Intramurals 1, 3; Sacred Heart League 4; Class Officer 3.



It seems as though Sylvia Condon is carrying on quite an interesting discussion with her Freshman classmates.



GEORGE ALBERT QUIRK

St. John's

"Skippy" . . . quick-witted . . . famed lover . . . likes to draw . . . always has a smile for a friend . . . eager sports enthusiast . . . undecided about college.

Sacred Heart League 4; Softball 2; Intramurals 2, 4.

GERTRUDE JUNE ROACH St. Mary's

Takes life as it comes . . . enjoys talking . . . always ready with a helping hand . . . loves to laugh . . . an even disposition . . . a good friend.

Dramatic Club 2; Glee Club 1, 2; Immaculate Conception Sodality 1, 2, 3; St. Mary's Choir 1, 2, 3, 4.





PRISCILLA ANN SALIEM St. John's

Ever ready . . . "Let all my life be music" . . . sunny smile . . . gracious hostess . . . quick laughter . . . devout . . . plans a career in music

St. John's Sodality 1, 2, 3, 4; Choir 1, 2, 3, 4; Glee Club 1, 2, 3, 4; Girls' Club 3; *Crusader* Staff 4; League of the Immaculate Heart of Mary 2, 3, 4; French Club 3, 4.



This class seems to be interested in nothing.



ROSEMARY SANBORN St. Mary's

Spontaneous humor . . . everybody's friend . . . unassuming . . . abounding in energy . . . expressive eyes . . . winning smile . . . a regular gal . . . bundle of fun

Choir 1, 2, 3, 4; Glee Club 1, 2; Girls' Club 3; *Crusader* 4



CHARLES EDWARD SHEEHAN

St. Mary's

"Charlie" . . . jovial, cooperative . . . can always be seen around the city in his Jeepster . . . favorite hobby, eating and airplanes . . . Bapst's best errand boy . . . likes camping at Moosehead Lake.

Sacred Heart League 4; *Bapstonian* 4.

RUSSELL THOMAS SIMPSON

St. Mary's

Very solemn . . . never worries . . . takes life easy . . . has a passion for drawing . . . 4 A's Walt Disney . . . great movie fan . . . plans for a future in journalism.

Sacred Heart League 4; *Bapstonian* 4; Softball 2; Intramurals 1.





The senior class officers, M. Binnette, C. Pooler, J. Eslin, B. Tedesco, R. Baker, J. Perry, R. Higgins, and P. Goody look pretty while the camera man takes their picture.



JAMES SOUCY St. John's

"Jimmy" . . . pleasant, earnest worker . . . working in his spare time for his father's baking company . . . plans to go into business with him.

Intramurals 1, 2; J. V. Basketball 2, 3; Sacred Heart League 4; *Bapstonian* 4.



H. RICHARD SPENCER St. John's

"Dick" . . . hobby is fixing typewriters . . . quiet and sincere . . . headed for typewriter school.

Sacred Heart League 4; *Bapstonian* 4.



ROBERT PAUL STEFANSKI St. Teresa's

"Porky" . . . earnest, hard working . . . able athlete, especially in football . . . looked forward to playing Brewer every year . . . has gone in for politics lately, elected city manager, 1950.

Football 3, 4; Baseball 2, 3, 4; Sacred Heart League 4; Intramurals 3, 4; *Bapstonian* 4.



WILLIAM HENRY STROSSMAN St. Mary's

"Strossie" . . . ambitious . . . whiz in math and science . . . loves to tell jokes . . . takes pride in his model airplanes and photography . . . favorite expression "HAW" . . . undecided about college.

Sacred Heart League 4.



HAROLD MARTIN SULLIVAN

"Sully" . . . outstanding student . . . pleasant personality . . . interested in all activities at Bapst . . . likes to trip the light fantastic . . . bound for Maine.

Sacred Heart League 3, 4; Public Speaking 4; Dramatics 3, 4.



BETTY LEE TEDESCO

Sunny disposition . . . witty . . . active, agreeable, and well liked . . . kind and helpful . . . executive ability.

Glee Club 1; Dramatic Club 3; Secretary 1, 3; Treasurer 2; Vice-President 4.



Betty Bates, efficient office worker, discusses her future with Sister Mary Luke.



PAUL TESSEO

St. John's

"Gideon" . . . serious and industrious lad . . . likes basketball and English . . . willing to tackle anything and everything . . . Plans to attend West Point.

Intramurals 1, 2, 3, 4; Sacred Heart League 4.



MAJORIE ANNETTE THIBODEAU

St. Joseph's, Old Town
Lovable "mam'selle" from Old Town . . . big brown beautiful eyes . . . courteous . . . sees the funny side of things . . . surrounded by friends . . . always on the run for the Old Town bus . . . Nursing looms in the future for this alert Miss.

French Club 3; Glee Club 3, 4; Girls' Club 3; *Crusader* Staff 4; League of the Immaculate Heart of Mary 3, 4.



PRISCILLA MARGUERITE THIBODEAU
St. Mary's

An eager-beaver . . . fast in typing . . . her friendship is cherished by all . . . loves life as it is . . . "Priscy" comes from Levant.

Dramatic Club 1, 2, 3, 4; Glee Club 1, 2, 3; Girls' Club 3; St. Mary's Choir 4; League of the Immaculate Heart of Mary 1, 2, 3, 4.



MERLE WILLETTE Old Town, Me.

"Merle" . . . unassuming chap all the way from Old Town . . . shower room Sinatra . . . hobby is not working . . . likes school . . . canoe factory bound.

Sacred Heart League 4



KARL DENNIS TRACEY
St. Joseph's, Brewer

Sincere, friendly personality . . . gets along with everyone . . . willing helper . . . hails from the city across the river . . . good business man . . . sports enthusiast . . . college uncertain.

Sacred Heart League 4; Intramurals 1, 2, 4; *Bapstonian* 4.

Brother Colman explains an intricate passage to John Sprague.



ELIZABETH CHRISTINE WESTON
St. Mary's

Impetuous . . . jaunty . . . lover of life . . . never lacks an escort . . . happy-go-lucky . . . likes music country style.

Glee Club 1; St. Mary's Choir 2; Immaculate Conception Sodality 2.



ROBERT JOSEPH WILLETT
Old Town, Me.

Friendly, industrious, good student . . . likes math . . . liked by all teachers . . . a track star in his early years . . . likes to dance . . . college bound.

Sacred Heart League 4; Track 1.



SYLVIA JOAN WITHAM St. Mary's

Dainty from top to toe . . . sparkling eyes . . . petite . . . joyful . . . "Mitzi" enjoys a good laugh . . . sweet and sensible . . . non-chalant walk.

St. Mary's Choir 2, 4; Girls' Club 3.



ANNE MARGARET WINSLOW
St. John's

Energetic ticket seller . . . shining eyes . . . golden hair . . . congenial . . . mischievous . . . surrounded by friends . . . portrait of a lady bestowed with a gay disposition . . . has free passes to movies.

Choir 1, 2; Glee Club 1, 2; St. John's Sodality 1, 2, 3, 4; League of the Immaculate Heart of Mary 1, 2, 3, 4; French Club 2, 3; Crusader Staff 4; Bapstonian 4.



Brother Bertel checks reports on field trip of his General Science Group.

Mr. Hughes squares account with Brother Ernan.



underclassmen



THE BAPSTONIAN 1950

JUNIORS



First row, left to right: J. Tolman, D. Leveille, I. Hardy, L. Paradis, C. Aucoin, M. E. McLeod, R. Ferris, and E. Pooler.

Second row: C. McGinnis, J. Thibodeau, M. J. Peavey, M. Aiken, B. Shannon, T. Whitty, M. Kjelgaard, C. Roy, V. Danforth, G. Verron.



First row, left to right: Frank Jansson, John Duddy, Jay Hayes, Albert Quine, Robert Geagan, Barry Smith, James Lynch.

Second row: John Flanagan, Watie Akin, Frederick McLean, Donald Moore, James O'Loughlin, Edward Conley, John Meehan, Peter Bosse.



First row, left to right: C. Barton, M. Black, J. Gallant, K. Harvey, L. Davis, G. Hayes, P. Bishop, J. Levesque, R. Hughes, R. Searway.

Second row: R. Tremble, J. Lizotte, E. Martin, C. Brochu, W. Duddy, W. Hanscom, G. Gilmore, W. Spencer, T. McCann, R. Pooler.

JUNIORS



First row, left to right: B. J. Nadeau, H. O'Connor, C. Tardiff, J. Higgins, M. Goula, C. St. John, P. Connors, N. Therriault, B. Willette, J. LeBlanc.

Second row: C. Ouellette, T. Gallant, G. Rand, L. Lovell, M. Caruso, J. Godfrey, B. Stewart, H. Bilodeau, J. Muldoon, C. Ceasar, and B. Burke.

SOPHOMORES



First row, left to right: R. Rivers, B. Day, B. Crawford, J. Farwell, E. Eslin, B. Casey, J. Leveille, V. Butera, C. O'Toole, J. Cammack, S. McDonald.
Second row: A. Caruso, P. Gallagher, J. Kelley, G. McGlaughlin, M. A. Currier, P. Hopkins, J. Messier, M. A. Messier, A. Soucie, M. A. George, and P. Rand.



First row, left to right: R. Doucet, T. Smith, J. Hayes, R. Lawrence, V. LeBlanc, P. Blanchard, W. Elward, J. Dufour, W. Sproul, C. Worcester.
Second row: J. Gillis, R. Howell, W. Tittle, C. Connolly, L. Trainor, R. LeBlanc, J. Albert, A. Martin, R. Snow, R. Brochu.
Third row: F. Bosse, R. Martin, R. Therriault, G. Searway, D. Gagnier, R. Cormier, R. Howell, F. Lawrence, C. Gallagher, C. Hogan.



First row, left to right: P. Shanley, D. Jordan, J. Quine, P. Cassidy, D. Ferris, F. Clancey, C. Estabrook, J. Purdy, J. Connor, J. Robinson, R. Hardy, and J. Delaney.

Second row: R. Goody, J. Nadeau, R. Lynch, J. Sprague, J. Wedge, R. Torrey, J. Abbott, W. Perry, J. Bennett, R. Connor, R. Cox, and R. Viola.



First row, left to right: S. Roy, M. R. Jameson, A. M. Brangwynne, R. Landry, M. Morgan, G. Dionne, A. Cohan, M. Johnson, R. Watson, D. Godin, M. E. McClay.

Second row: J. Bennett, J. Batchelder, B. Thorne, M. E. Dunroe, C. McCleod, J. Ste. Marie, A. Tesseo, B. Lobley, M. R. Perry, M. McManus, and M. Goodness.

SOPHOMORES



First row, left to right: R. Cushman, J. Shaw, R. Gallagher, J. Kearns, R. LePage, G. Carrol, G. Cassidy, P. Cilley.

Second row: F. Doucette, L. Lavoie, B. Pelchier, R. Kearns, E. Lozier, R. Dauphinee, R. Drinon, J. Drinon, R. King.

FRESHMEN



First row, left to right: J. McLean, C. Tuttle, P. Welch, G. Muldoon, J. Talbot, President; M. E. Graham, Treasurer; N. Sanborn, E. Violette, E. Violette, E. Soucier, and C. Verow.

Second row: A. Chambers, J. Morneau, S. Godfrey, P. McNeil, M. L. Stuart, T. Roberge, F. Jenkins, S. Elward, C. McGee, B. Burton, S. Campbell, V. Cammack, G. Bolduc, E. Cameron, and M. Bishop.



First row, left to right: G. Bell, M. J. Girouard, E. Connor, G. Malone, A. M. Davis, S. Mann, S. Condon, D. Armitage, A. M. Vickers, J. Cushing, and P. Kelleher.

Second row: J. Farwell, P. Cushman, K. Kane, J. Manley, A. M. Lynch, C. Duren, C. Sullivan, B. Kelley, C. A. Shanley, A. O'Loughlin, S. Perry, B. Pooler, and T. LaFlamme.



First row, left to right: W. Lovoie, N. Dowd, F. Mooney, P. Bouchard, P. Nelligan, M. Ferris, R. Goggin, J. White, J. Samways, J. Golden.

Second row: W. Dionne, J. Tremble, K. Williams, A. Rush, J. Sidelinker, E. Tate, J. Hughes, R. McAloon, R. Day, P. Szulinski, J. Killam, R. Vallee.

Third row: T. Wilson, J. Russell, J. Welch, J. Pregovisk, R. Welch, P. Robinson, D. Poulin, H. Bishop, F. O'Toole, V. St. Armand, R. Desjardins.

FRESHMEN

organizations



THE BAPSTONIAN 1950

The League of the IMMACULATE HEART of MARY



V. Danforth
J. Batchelder
B. Cormier, Prefect
M. Perry

JOHN BAPST MOTHERS' CLUB



Mrs. William L.
Meehan
Mrs. Charles E.
Sheehan
Mrs. John P.
Quine
Mrs. Lawrence J.
Shaw
Mrs. John P.
McClay
Mrs. James E.
Connor

THE SACRED HEART SOCIETY



Front row, left to right: E. Desrosiers, C. Cormier, R. Coyne, F. Gaudet, W. Allen, J. Callinan, G. Pooler, J. Perry, D. Norris, J. McGrath, W. Nelligan, R. Higgins, R. Willett, R. Baker.

Second row: J. Soucy, T. Mahaney, K. Tracey, W. Strossman, J. Lynch, W. Hughes, T. Ambrose, W. McKenzie, D. McLeod, L. de Young, R. McGarry, S. Morneau, G. Quirk, C. Sheehan, J. Morrill.

Third row: P. Goody, W. Mayo, R. Perry, J. Leen, R. Simpson, P. Doyle, M. Willett, P. Tesseo, G. Kelly, R. Spencer, R. Higgins, J. Crawford, C. Cushman, J. McKay, A. Jones.

Officers and Speakers

SACRED HEART SOCIETY



Paul Goody, Vice President; Gregory Pooler, President; Donald Higgins, President Senior Class; Charles Sheehan, speaker; Ronald McGarry, Secretary; Ronald Baker, Chanter.

Sacred Heart Society, composed exclusively of Seniors, is an active organization whose chief function is promoting First Friday Devotion.

C
o
m
b
i
n
e
d

S
o
c
i
a
l
i
t
i
e
s



*First row: V. Grangel, M. E. McLeod, J. Higgins, B. Bates.
Second row: A. Cohan, J. Lebel, C. Pooler, G. Verron.
Combined spiritual forces of John Bapst!*

John Bapst French Club

B. Comber reads
to C. Roy, A.
Thibodeau, R.
Ferris, as
these young
mam'selles plan
the next French
Club meeting.





John Bapst Debating Club

Standing: R. Baker, M. Ferris, R. Goggin, P. Shanley.
Sitting: R. Connor, N. Dowd, J. Killam, J. Purdy.

Sitting: C. Martin, Miss O'Leary, M. Binnette, D. Mundy; *on floor:* C. Ouellette, L. Pakadis.

Officers of Dramatic Society



The John Bapst Girls' Glee Club



Accompanist
Victoria Grangel



Soloist
Ann Cohlan



Soloist
Betty Willette

activities

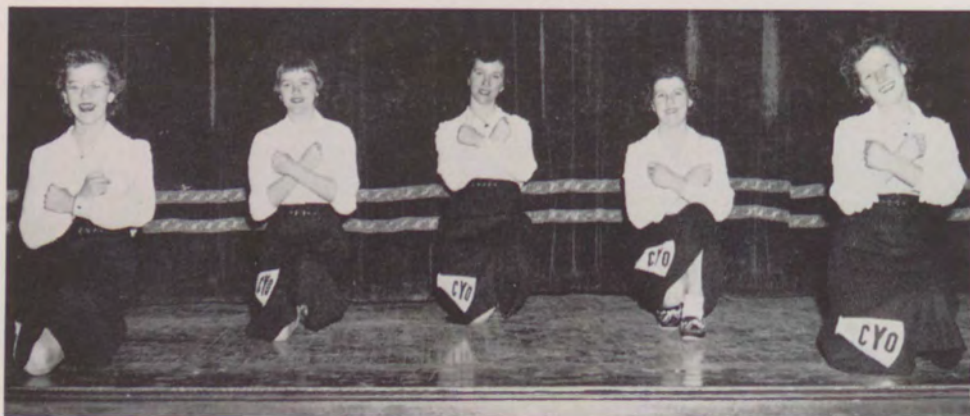


THE BAPSTONIAN 1950

RETREAT — Father Nolan, C.S.S.R.



C Y O Cheer Leaders



Hip! Hip! S. Mann, J. Farwell, P. Welch, T. LaFlamme, and P. Cushman, give a rousing cheer for the C.Y.O.

NURSES' AIDES



Junior Florence Nightingales shown receiving caps are: J. Bennett, G. Dionne, M. Goodness, S. Roy, M. R. Perry, and A. Cohan.



Stellar cast for:

Front row:

Judy Leighton

Mary Jane McLeod

John Quine

Walter Allen

Standing:

Barbara Comber

David Jordon

Ronald McGarry

"Our Hearts Were Young and Gay"

John Wedge points out a punch line



Joan Lebel

Mary Jane Peavey

Ann Davis

John Wedge

SKITS FROM SAINT JOHN'S COFFEE PARTY

Mountaineers

Barbara Albert

Judy Leighton

R. Coyne, J. McGrath, D. Jordan, J. O'Loughlin



J. Hughes, J. Leen, G. Kelley, J. Lynch, R. Geagan, J. McGrath.

"Sing
Gypsy,
Dance
Gypsy,
Sing
While
You
Play"



B. Comber, P. Cushman, J. Farwell, S. Mann,
A. Cohan, B. Cormier, M. E. Graham, P. Welch,
B. Gross, C. Shanley, J. Farwell, M. E. Farwell.



"I Didn't
Know
the
Gun
Was
Load-ed"

Connie Ouellette
Mary Ann Comer
Vicky Grangel
Joanne Lebel



Mr. Crowley and Miss O'Leary crown Tom Mahaney and Mary Ann Comer, King and Queen of the Snowball Dance while their attendants Joseph Leen, Judy Leighton, James Soucy and Barbara Comber stand by.

J. McGrath, B. Johnson, A. Winslow, D. Spencer.

*First row: T. LaFlamme, C. Ward, B. Shaw, D. Armitage.
Second row: R. Cushman, J. Lynch, R. Hughes, N. Bishop.*



Callinan, Mahaney,
Perry and Company
take over



Some of the
boys and
their gals
sit one out

A Quartet

C. Cormier
B. Tedesco
M. Lovell
L. Burke



A

Thoughtful
Interlude



"SHOT" AT SENIOR PROM



Left to right:

M. Willette
J. Lebel
P. Thibodeau
R. Lavoie
R. Pooler
C. Pooler

Royalty on the
March

J. Soucy, B. Comber, T. Mahaney.
M. A. Comer.



Grand
Ensemble



BANKING



J. Batchelder, B. Thorne, A. Tessio, M. R. Perry, R. Watson consult J. Eslin about saving for a rainy day.

RADIO



It's "High Time". D. Jordan and J. Purdy keep us posted on Bapst "doings".

Vocation Week Play

M. A. Comer
J. Tolman
J. Label
C. St. John
P. Thibodeau

United Nations Play

J. Leighton
C. Martin
V. Grangel
A. Saliem
B. Gross



The Radio Group

Prepares for
a joint
Broadcast



City
Council
Plot a
Campaign
C. Pooler
R. Higgins
D. Mundy
J. Crawford

Checking out—
or in?



Just
a
casual
scene in
our
Library

The Crusader

NOVEMBER 1949

JOHN BAPST HIGH SCHOOL, BANGOR, MAINE

VOL. IV No. 5

FRESHMEN LEAD HONOR GROUP



Partier,
Judy Leig.
Barbara Gros.

Ch.

Sister Mary Luke has a wonderful idea to attain better attendance in the school. The home room which has the poorest attendance will give a party to the home room which has the best attendance. In case of a tie, the two poorest would entertain the two best. Sister is leaving the decision to you. If you are in favor of this

League was first organized in 1940 to strengthen the spiritual life of the

Me.
votes.
deadline.

If the decision
party will be held
today. How about it,
you think it's a neat idea?

Vice President..... Laura Pa.
Secretary..... Joanne Higgins
Treasurer..... Claire Aucoin

Sophomores

President..... Barbara Casey
Vice President..... Evelyn Eslin
Secretary..... Gladys Dionne
Treasurer..... Ann Cohan

U N OBSERVANCE

The seniors in Room 207 observed United Nations Day by presenting a program for the student body and faculty. Nearly all the foreign countries were represented by girls who were gowned in the native dress of country. The "Big Five" was led by Mary Ellen Irvin as United States, Mary Bates as China, Mary Bates as France, Mary Bates as Britain, Carmen Bates as The seven girls were distinguished by

GENEVA MALONE TOPS RANKS WITH AVERAGE OF 95%

SENIORS

Priscilla Peters, Dolores Mundy, Marie Binette, Judith Leighton, Victoria Grangel, Margaret McDonald, Margaret Perry, Madelyn McAllister, Betty Bates, Barbara Comber, Elizabeth Cormier, Barbara Murray, Anne Winslow, Ethel Bigelow, Marie Picard, Constance Pooler, Barbara Gross, Ann Salien, Annette Thibodeau, Betty Tedesco.

JUNIORS

John Lovell, Claire Aucoin, John McLeod, Delcina Leitch, Danforth, Rosemary, Joann Muldoon, Akin, Barbara, Bethen, Betty, Teresa.

en,
Mary
Carlene
Mary
Leod, Jac
ath Landry
O'Toole, Joan
nett, Jacqueline

FRESHMEN

Malone, Mary Jane G.
Ann O'Loughlin, Catherine
Anne Marie Vickers, Ann
Davis, Joann Talbot, Beverly
arton, Therese Laflamme, Mary
Ellen Graham, Geneva Bell, Eleanor
Cameron, Sally Elward, Shirley
Mann, Colleen Sullivan, Juanita
Morneault, Estelle Violette, Anne
Marie Lynch, Josephine Manley,
Esther Violette, Jane Farwell.

WE EXTEND OUR
SYMPATHY TO
SISTER MARY ROSE
ON THE RECENT
DEATH OF HER MOTHER

WELCOME TO
JOHN BAPST,
SISTER MARY REGIS

sports



THE BAPSTONIAN 1950



Captain John Callinan



Coach Nat
Crowley and
John Hickson



Captain Tom Mahaney

Our hats are off to our coach, Nat Crowley, and to all the members of the teams which represented John Bapst High School during the 1949-1950 season. Nat, our genial coach, has received much praise during the past year and deservedly so. The class of 1950 wishes to add its little bit to that of many others. Congrats, Nat, on a great season. May you have many more banner years at John Bapst. We promise you our most loyal support during the coming years.



Robert Stefanski



Walter Allen



Mel Geaghan

The record of the 1949 football team was not the best, to be sure, but our club showed plenty of promise for the coming years. Truly this was a building year. Most members of the squad were either juniors or sophomores. So watch out, all Bapst opponents this coming fall.

The John Bapst Crusaders opened the 1949 season with a hard-earned 8 to 0 victory over the highly rated Indians from Old Town High. It was a hard fought game with both teams showing lack of experience but plenty of spirit to carry them through the remainder of the season. Newcomers, Trainor, Blanchard, Lawrence, Babcock, and Dauphinee, along with our

James Perry



Richard Higgins



Paul Blanchard





Leo Trainor



Richard Tremble



Richard Babcock

returning veterans, paced the team to its first victory. We were host to Millinocket for our next game and gained a decisive victory. We ran into plenty of trouble when we tangled with the Bangor Rams, who swamped us with the very decisive score of 50 to 0. Our next setback came at the hands of Gardiner High School to the tune of 34 to 6. Journeying across the river to Brewer, our battered and weakened team threw a scare into the folds of Brewer fans for three quarters when it held the Witches scoreless. The pace could not be held by the Bapst team, and Brewer romped to a 32 to 6 victory late in the fourth quarter. This game, however, proved that material for the coming Bapst teams will not be hard

William Duddy



John Duddy



Gene Gilmore





Mahaney, Stefanski, and Tremble combine to stop a Stearns player after a short gain.

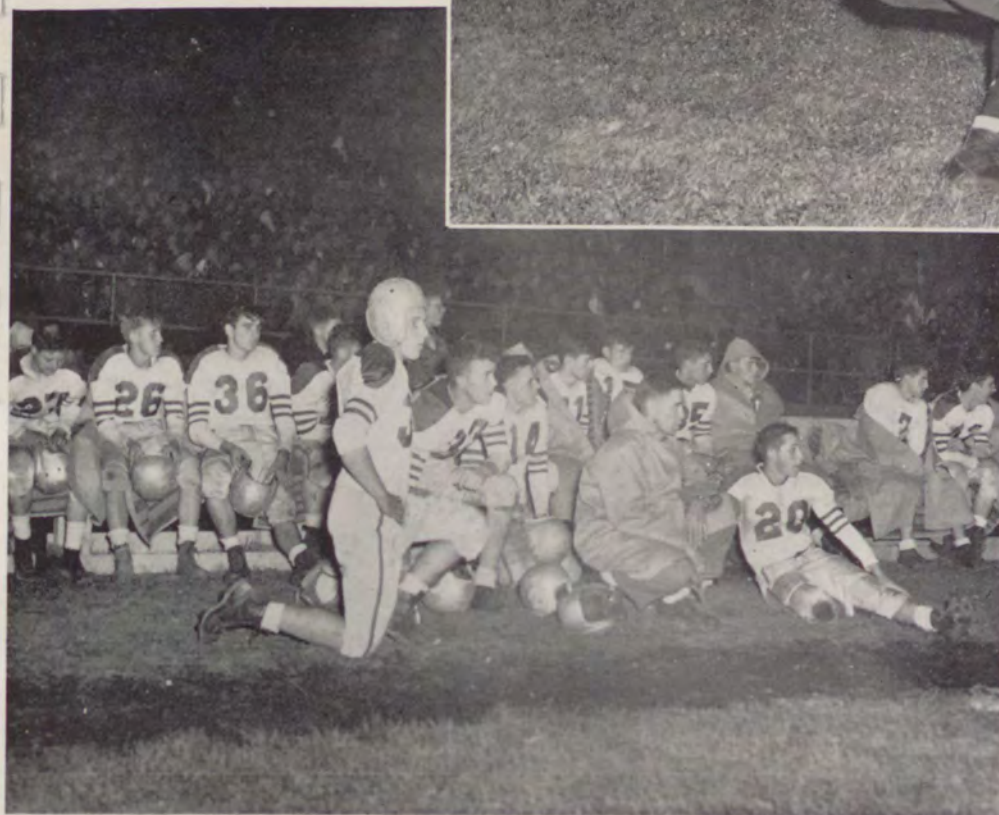
Speedy Leo Trainor breaks into the open against Old Town and makes a sizeable gain before he is brought down.



to find. After three set backs, the team, anxious to return to the win column, prepared with grim determination for the coming encounter with our Catholic rivals from Portland, Cheverus High School. In one of the better played games of the season we upset our foe and brought victory back to our loyal John Bapst fans. In closing out the season our team fought a surprisingly strong Waterville team to a 7 to 7 tie.

The 1949 football season was suitably brought to a close with a banquet held at the Windsor Hotel. Nat Crowley gave the principal speech on the occasion and expressed his sincere regard for each and every member of the squad. As the letter awards were distributed to a good many juniors and sophomores, most of us were thinking in terms of the coming football season. With the experience the boys have had this season and under the capable coaching of Nat Crowley, they should really go places next fall.

Hard-running Tom Mahaney is finally brought down by a pair of Bangor linesmen.



Coach Nat Crowley and his squad watch a goal line stand by the spirited Crusaders.



A Gardiner back hits a stone wall as Allen, Perry, Stefanski and Blanchard bring him down.

Goody, Dauphinee, Trainor, Callinan, Duddy, and Stefanski display the grim fight that was staged in the Brewer game.





J. Gillis



R. Spellman



R. Pooler



B. Smith



R. Dauphinee



First row: Coach Nat Crowley, W. Spencer, J. Gallant, W. Thibodeau, R. Tremble, W. Allen, J. Callinan, J. Perry, R. Higgins, R. Stefanski, P. Goody.
Second row: J. Welch, E. Conley, W. Duddy, K. Harvey, R. Pooler, G. Gilmore, R. Geagan, B. Smith, J. Hayes, R. Babcock, J. Duddy.
Third row: R. Perry, B. Connelly, R. Lawrence, J. Quine, C. Gallagher, G. Carroll, G. Cassidy, P. Blanchard, G. Searway, L. Trainor, R. Dauphinee, R. Spellman.
Fourth row: J. Soucy, T. Geaghan, J. Tremble, R. Kearns, J. Gillis, J. Wedge, R. LePage, R. Golden, A. Quine, J. Kearns, J. Hickson.
Fifth row: G. Hayes, C. Cormier.

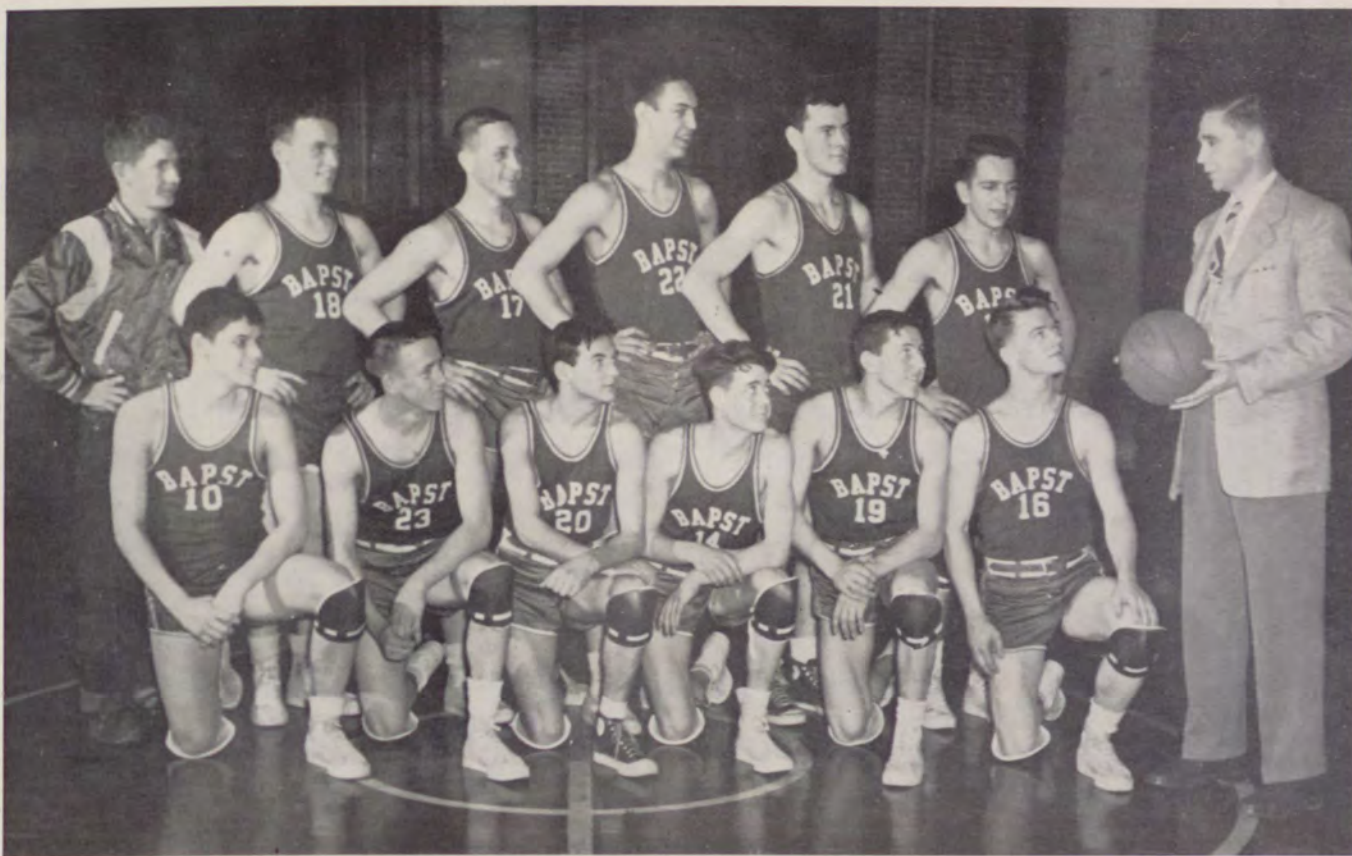


Coach Nat Crowley smiles confidently as he begins the 1949-1950 basketball season. Here he is seen contacting officials for his home games. As athletic director and coach, Nat is a busy man the year round.

When the 1949-50 basketball season opened, Coach Nat Crowley could count on only one veteran from his tourney finalists of last year. When questioned about his chances the coming season, Nat could promise only a mediocre record. The first few games showed that the team, although lacking in experience, was high in spirit. The club surprised the fans when it upset the Brewer Witches 46 to 26, and proved that it would be a hard team to beat for the rest of the season. The Crusaders continued to topple their P. V. C. rivals but found difficulty with Waterville, Stearns, and Bangor. Hitting their mid-season stride they bowled over a highly rated Old Town team. The game which the team and the fans

wanted to win the most was the second encounter with our city rival, Bangor High. Standout performances were given in this game by Tom Mahaney, Ken Harvey, Greg Pooler, and Billy Spencer. The latter proved to be the sparkplug in the Crusader team when he pushed through the winning marker in the overtime period. With a tourney play-off in mind the Crusaders traveled to Millinocket and lost to a good Stearns team by a close margin. Tournament time drawing closer, the Bapst team was forced into a play-off with Gardiner High. The long trip to Waterville did not hamper the Crusaders, however, and they won a hard-earned victory to place them in the Eastern Maine tournament at Orono.

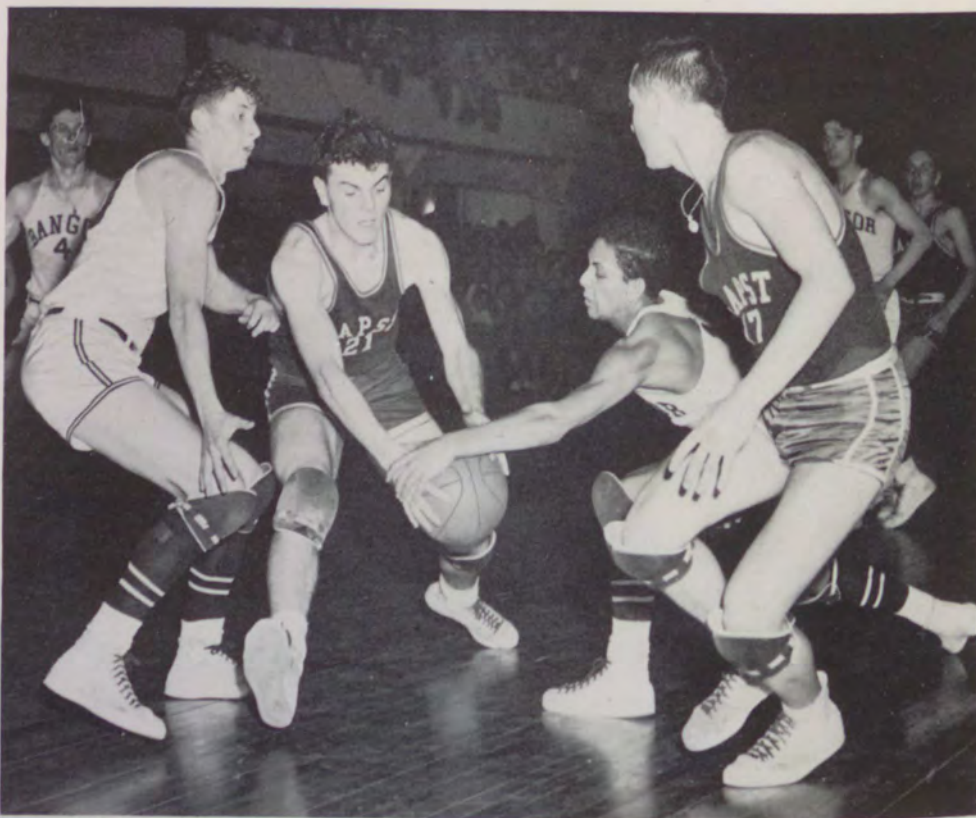
John Bapst Basketball Squad, 1949-1950



Kneeling: K. Harvey, R. Dauphinee, R. Drinon, G. Pooler, J. Gillis, L. Trainor.
Standing: Mgr. R. Perry, T. Mahaney, W. Spencer, P. Blanchard, J. Callinan, P. Goody,
Coach Nat Crowley.

Then came tournament time, and the boys were anxious to get going. The first game proved to be a hard one, for we were selected to play Waterville who had toppled us twice in regular season play. The game had the fans on their feet from start to finish, and, sparked by the tremendous board work of John Callinan and the ball-handling of Ken Harvey, we squeezed out a two point victory in an overtime thriller. Having gained the semi-finals, the Crusaders found themselves opposing the Old Town Indians for the third time. Bapst beat the Indians but lost a heart-breaker to Stearns by a disputed two point margin.

John Callinan struggles to get ball away from a Bangor player over to sharp-shooting Billy Spencer.



Greg Pooler makes a difficult shot against the Bangor Rams.



Ken Harvey displays some fancy ball-handling as Bapst downs Ellsworth High School.

Greg Pooler tries to block an Old Town player's shot as Billy Spencer and Paul Blanchard wait for the rebound.



Spencer, Blanchard, Harvey and Pooler tie up a Bangor player in his attempt to get off a shot.





Billy Spencer pushes in a difficult one-hander as the Brewer players wait in vain for a rebound.

Ken Harvey tries to block an Old Town player's bid for a basket.

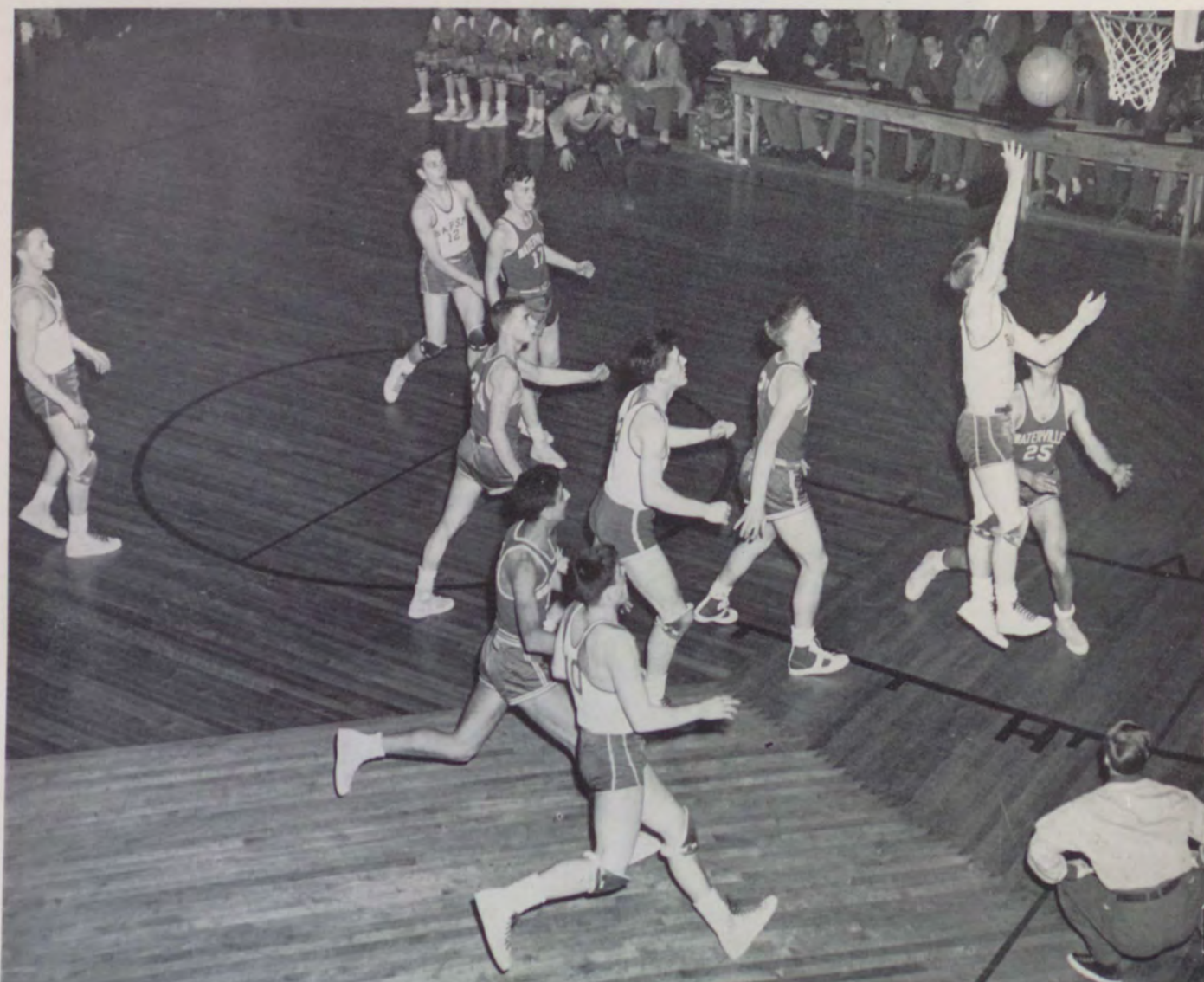


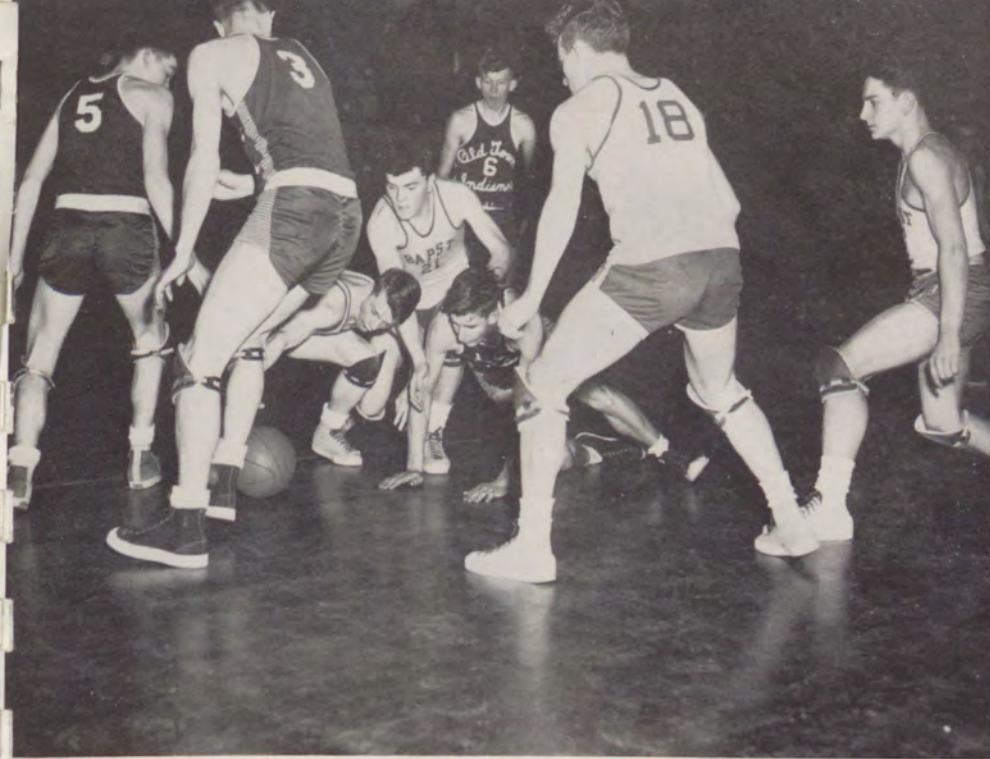




Nat prepares his starters for their first game in the Eastern Maine Tournament.

The entire Bapst and Waterville teams look on as Leo Trainor shortens the Panthers' lead by two points.





Trainor and Callinan fight for a loose ball as Mahaney and Goody wait for a possible pass.

Johnny Callinan leaps high in the air to deprive an Old Town player of two points.



Billy Spencer drives by two Stearns players to score two points.



Our spirited cheerleaders:
Joan Thibodeau, Rosemary
Ferris, Madeline McAllister,
Mary Jane Farwell, Con-
stance Ouellette.

Our cheerleaders and
loyal fans during a
tense moment at the
Waterville game.



JOHN BAPST JUNIOR VARSITY

Sitting: J. Tremble, C. Con-
nolly, G. Searway, J.
Kearns, R. Kearns, K.
Williams.

Standing: Mgr. R. Searway,
G. Carroll, V. LeBlanc, W.
Hanscom, R. LePage, R.
LeBlanc, R. Albert, D.
Ferris, Mgr. T. Smith,



*The Boys
Plod Heavily
Towards
Study and . . .*



*Scientific
observation*



*The Girls Go
Gaily Home*







PATRONS

Mrs. James P. Abbott
 Miss Margaret Abbott
 Mr. and Mrs. Joseph Albert, Sr.
 Mr. and Mrs. Joseph Albert, Jr.
 Mrs. Everett A. Allen
 Mr. Arthur Allen
 Miss Majorie Allen
 Mrs. Marie Allen
 Miss Eileen Ambrose
 Mr. and Mrs. J. A. Ambrose
 Mr. and Mrs. Thomas Anson
 Mrs. Mary E. Ashworth
 Mrs. Annie B. Babcock
 Mr. and Mrs. John L. Babcock
 Mr. and Mrs. Edward Baker
 Major and Mrs. Horace E. Bamberg
 Mr. and Mrs. George Barker
 Mr. and Mrs. Joseph Barron
 Mrs. L. Bartlett
 Mr. Arlo Barton
 Miss Sadie Bell
 Mr. Ronald Bernadini
 Mr. James E. Bigelow
 Miss Bernadine Binnette
 Mr. and Mrs. Joseph Binnette
 Mr. and Mrs. Philip Bishop
 Mr. Edward A. Black
 Mr. and Mrs. Clarence Blake
 Miss Joyce Blake
 Miss Caroline Bouchard
 Mr. William A. Boyle
 Mr. and Mrs. William A. Boyle
 Mr. and Mrs. Gerald Brochu
 Miss Jeanne Brodeur
 Mr. and Mrs. Napoleon Brodeur
 Mrs. Catherine Brooks
 Mr. John P. Burgess
 Mr. Esits Burgin
 Mr. Louis L. Byer
 Miss Helen Louise Cahill
 Mrs. Catherine Callinan
 Mr. and Mrs. Edward J. Callinan
 Mrs. Samuel Choplin
 Mr. and Mrs. James Clark
 Miss Mary Clark
 Mr. and Mrs. Forrest Comber
 Mr. and Mrs. Lawrence Comer
 Mr. Lawrence M. Comer, Jr.
 Miss Mary Ann Comer
 Mr. and Mrs. William Comeau
 Mr. and Mrs. Justin Connors
 Mr. and Mrs. Leo Connor
 Mr. and Mrs. Jeny S. Connolly
 Mr. and Mrs. Olin B. Cookson
 Mr. Abraham Corey
 Mr. and Mrs. Emile G. Cormier
 Mrs. Eva Cormier
 Mrs. Imelda Cormier
 Miss Mildred F. Cousins
 Mr. and Mrs. Clement F. Cote
 Mr. and Mrs. Douglass H. Crawford
 Mr. and Mrs. Joseph Cross
 Miss Joan Cushman
 Mr. Frederick Cushman
 Miss Therese Cushman
 Mrs. Mary C. Cushman
 Mr. George Cushman
 Miss Paula Cushman
 Mr. Francis Cyr
 Miss Mary Cyr
 Mr. Wilfred Cyr
 Mr. and Mrs. Owen H. Darling
 Mr. and Mrs. Thomas Davis
 Mr. and Mrs. William S. Deny
 Mr. Alphonse De Cesere
 Mr. Alphonse Desrosiers
 Miss Corine Desrosiers
 Mr. and Mrs. Onesime Desrosiers

Mr. Clifford De Young
 Mr. Lawrence De Young
 Mr. John Doran, Jr.
 Mr. and Mrs. John F. Doran
 Miss Katherine Dougherty
 Mr. and Mrs. Norbert X. Dowd
 Mr. and Mrs. James Doyle
 Miss Joan F. Duddy
 Mr. and Mrs. P. Paul Dufour
 Miss Patricia Duplissa
 Mr. and Mrs. Fred Dwyer
 Miss Teresa Dwyer
 Mr. and Mrs. Charles Emery
 Mr. Joseph W. Eslin
 Mr. and Mrs. John Farwell
 Mrs. Julia Farwell
 Mrs. Mary Fessenden
 Mr. and Mrs. Harold Field
 Mr. and Mrs. John J. Flaherty, Jr.
 Miss Josephine Flanagan
 Mr. and Mrs. Daniel Frazier
 Mr. Frank Flynn
 Mr. Carroll Frye
 Mr. and Mrs. J. F. Gallagher
 Mr. and Mrs. Cyrus Gallant
 Mr. and Mrs. Julian Gass
 Mr. and Mrs. Frank Gaudet
 Mr. and Mrs. William Geagan
 Mr. and Mrs. James T. Geaghan
 Mr. Llewellyn A. Gilman, Jr.
 Mrs. J. Irving Gleason
 Mr. and Mrs. Robert Godfrey
 Miss Emile Godin
 Mr. and Mrs. Clayton Golightly
 Mr. and Mrs. Allie Goody
 Miss Rita Goody
 Mr. Ralph O. Graffan
 Mr. and Mrs. James P. Griffin
 Dr. and Mrs. George P. Gunn
 Mr. and Mrs. William Gunning
 Miss Frances Guthrie
 Miss Julia Haley
 Mr. and Mrs. Fred T. Hall
 Mrs. Anna Hart
 Mrs. Milton Hartery
 Mr. and Mrs. James H. Harvey
 Mr. Louis Hatch
 Mr. and Mrs. Raymond Henry
 Mr. and Mrs. Thomas Higgins
 Mr. and Mrs. J. H. Higgins
 Miss Catherine M. Houlihan
 Dr. and Mrs. John S. Houlihan
 Mr. William Houlihan
 Mr. and Mrs. C. E. Howell
 Miss Esther Hoyt
 Mrs. William T. Hughes
 Mr. William T. Hughes
 Mr. William Hughes
 Mr. and Mrs. Raymond F. Huse
 Mrs. John F. Irvine
 Miss Mary Ellen Irvine
 Mr. and Mrs. Philip Jarvis
 Mr. and Mrs. Thomas E. Jordan
 Mr. Arthur A. Jones
 Mrs. Florence Jones
 Miss Terry Julian
 Mr. and Mrs. George Karam
 Mr. and Mrs. Thomas Karrick
 Mr. and Mrs. Edward J. Kelleher
 Mr. Harold Kelleher
 Mr. John L. Kelleher
 Mrs. John Kelleher
 Mr. and Mrs. Maurice F. Kelley
 Mr. and Mrs. O. Clarence Kiah
 Mr. and Mrs. Arthur King
 Mr. and Mrs. Wilfred King
 Mr. and Mrs. Daniel L. King
 Miss Gertrude D. King

Mr. and Mrs. Paul LaChance
 Miss Marjorie Lakeman
 Mr. James Lamson Jr.
 Mr. Charles Langlais
 Mr. and Mrs. John E. Largay
 Mr. and Mrs. Fred Lebel
 Mr. Wilfred LeBlanc
 Mrs. James A. Leen
 Mrs. John Leighton
 Mr. and Mrs. John Leighton
 Miss Judy Leighton
 Mr. and Mrs. Edmund Law
 Mr. and Mrs. Victor Leveille
 Miss Elizabeth M. Libby
 Mr. and Mrs. Nealy Lucas
 Mr. and Mrs. Joseph T. Malone
 Mr. and Mrs. Albert Martin
 Mr. Herbert Martin
 Miss Mildred Martin
 Mr. and Mrs. Richard Martin
 Mrs. Annie Manning
 Mr. and Mrs. Thomas E. Mayo
 Mr. and Mrs. Malvina Mayecole
 Mr. and Mrs. Francis X. Mazerolle
 Mr. and Mrs. Leo F. Mazerolle
 Mrs. William Meehan
 Mr. and Mrs. John T. McAloon
 Miss Mary McCarthy
 Miss Bernadette M. McDonald
 Miss Margaret McDonald
 Miss Priscilla J. McGarry
 Mr. Ralph O. McGarry
 Mr. and Mrs. Edward McGee
 Mr. and Mrs. George McGee
 Mr. and Mrs. Frank W. McGrath
 Mr. and Mrs. James E. McGrath
 Mr. James G. McGrath
 Mr. and Mrs. Carr F. McInnis
 Mr. and Mrs. E. L. McKay
 Mr. John E. McKay
 Mr. and Mrs. F. I. McKenzie
 Mr. and Mrs. Francis McKenzie
 Mr. and Mrs. J. M. McLeod
 Mr. James Edward McManus
 Mr. Donald G. Michaud
 Miss Germaine Mooney
 Mr. and Mrs. John E. Moran
 Miss Margaret Moran
 Miss Helen Moran
 Mr. and Mrs. Samuel Morin
 Mr. and Mrs. Angelo Morneault
 Mr. and Mrs. Camille Morneault
 Mrs. Henry Morneault
 Mr. and Mrs. Leo Morneault
 Mr. and Mrs. Adrian J. Morrill
 Mr. and Mrs. William Morrison
 Mr. and Mrs. George Mullett
 Mr. William T. Mundy
 Miss Arlene F. Murray
 Mr. James G. Murray
 Mr. and Mrs. Peter P. Murray
 Sgt. Gerald R. Murrow
 Mr. and Mrs. Arthur Nachum
 Mr. and Mrs. William E. Nelligan
 Mr. Donald L. Nelson
 Mr. and Mrs. Richard Nickerson
 Miss Gertrude O'Brien
 Mr. and Mrs. John M. O'Brien
 Mr. and Mrs. Harold J. O'Connell
 Mr. and Mrs. John O'Connell
 Miss Janet O'Connor
 Mr. James F. O'Connor
 Mr. Harry A. Oliver
 Miss Connie Ouellette
 Miss Rachael Paradis
 Mr. and Mrs. George Pelletier
 Miss Helena P. Perry
 Miss Lou Ann Perry
 Miss Mary Jane Perry
 Mr. Robert Perry

Mr. and Mrs. N. Searle Perry
 Miss Ruth S. Perry
 Mr. and Mrs. Earl F. Perry
 Mr. and Mrs. Franklin Peters
 Miss Priscilla Peters
 Mr. and Mrs. Edmond Picard
 Mr. and Mrs. Allie Pinkham
 Mrs. Leonard L. Pooler
 Mr. Clement Pooler
 Mr. George Pooler
 Mr. William Pooler
 Mr. and Mrs. Victor Pooler
 Mrs. Margaret Prescott
 Miss Mary Joan Quirk
 Mr. and Mrs. John J. Quirk
 Mr. Joseph F. Rice
 Mr. Albert Ricker
 Mr. and Mrs. Rist
 Mr. and Mrs. Richard Rist
 Mr. and Mrs. Gilbert Rogers
 A Baptist Rooter
 Mrs. Albert Ross
 Mr. and Mrs. Ernest Roy
 Mrs. Margaret A. Royal
 Miss Elaine Ryder
 Miss Ann Saliem
 Miss Jane Sanborn
 Miss Rosemary Sanborn
 Mrs. Winifred Sanborn
 Miss Patricia M. Sargent
 Mr. and Mrs. Ira W. Scanlin, Jr.
 Mr. and Mrs. Raymond Searway
 Mr. and Mrs. Charles E. Sheehan
 Mrs. Alfred Sheehan
 Mr. and Mrs. Edward Short
 Miss Marlene Simpson
 Mr. and Mrs. R. B. Simpson
 Mr. and Mrs. William J. Sloane
 Mr. Norman I. Spencer
 Mr. and Mrs. Frank Sprague
 Mr. and Mrs. Steven Stefanski
 Mr. and Mrs. Arthur Sterens
 Mr. and Mrs. John Strossman
 Mr. and Mrs. Leonard Tedesco
 Mr. and Mrs. Louis Tesseo
 Dr. and Mrs. Louis Theriault
 Miss Mary Elizabeth Thibeau
 Mr. and Mrs. Steve Thibeau
 Miss Constance Thibodeau
 Mrs. Francis Thibodeau
 Mr. Francis Thibodeau
 Mr. and Mrs. Guy Thibodeau
 Mr. John Thibodeau
 Miss Priscilla Thibodeau
 Mr. and Mrs. John B. Toole
 Mr. Lawrence P. Tracey
 Mrs. Lawrence P. Tracey
 Mr. and Mrs. H. T. Tracey
 Mr. Charles H. Tremble
 Mr. and Mrs. Franklin Tremble
 Mr. and Mrs. Willard Varney
 Mr. and Mrs. Felix Veilleux
 Mr. and Mrs. John Verow
 Miss Mary Ward
 Mr. Howard A. Weber
 Mr. Hugh Whitty, Jr.
 Miss Betty Willette
 Mr. and Mrs. Edward Willette
 Mr. and Mrs. Jules Willette
 Mr. Merle Willette
 Mr. and Mrs. Albert Willett
 Mr. Robert Willett
 Miss Rita Willett
 Mr. and Mrs. Francis Willett
 Mr. and Mrs. Lawrence Winchester
 Mr. Alfred Winslow
 Mr. and Mrs. Walter J. Winslow
 Mr. Daniel E. Witham
 Miss Joan S. Witham
 Mr. and Mrs. S. H. Witham
 A Friend

THE BAPSTONIAN

From the Press of

Furbush-Roberts Printing Co., Inc.

LETTERPRESS AND OFFSET
PRINTING

IF IT'S PRINTED WE CAN DO IT

*The Only Complete Offset Plant
in Eastern Maine*

Modern

PHOTO ENGRAVERS

BANGOR • MAINE



Makers of Printing Plates, Illustrators

MAXIMS

TO GUIDE A YOUTH

by

One of Your Neighbors

Keep good company or none. Never be idle; if your hands cannot be usefully employed, attend to the cultivation of your mind. Always speak the truth; make few promises; live up to your engagements; when you speak to anyone, look him straight in the face.

Good company and good conversation are the very sinews of virtue. Good character is above all things else in life. Never listen to loose or idle conversation; you had better be poisoned in your blood than in your principles. Your character cannot be essentially injured except by your own acts. If anyone should speak evil of you, let your life be so virtuous that none will believe him.

Always speak the truth and act as if in the presence of your MAKER; drink no intoxicating liquors; ever live, misfortune excepted, within your income. When you retire to bed at night think of what you have done during the day. Never speak lightly of anyone; make no haste to be rich if you should prosper; small and steady gains give competency with tranquility of mind.

Never plan any game of chance; avoid the temptation through fear that may not withstand it. Earn your money before you spend it, and never run in debt unless you can see a way to get out of it.

Never borrow, if you can avoid it. Save when you are young to save when you are old. Never think what you do to alleviate the sufferings of fellow beings is time and money lost. Be kind and generous, for the whole human family is depending one upon the other.

MERCHANTS NATIONAL BANK OF BANGOR

Member

Federal Reserve System

Federal Deposit Insurance Corporation



HUSSON COLLEGE

(Formerly Bangor Maine School of Commerce)

An Institution of Character and Distinction

SUMMER SESSION: July 6 to Aug. 25, 1950

FALL TERM OPENING: Sept. 11, 1950

MEMBER

American Association of Commercial Colleges
National Council of Business Schools
New England Business College Association

Secretarial, Stenographic, Clerical, Machine Operator, and Accounting positions exceed the number of trainees available. Private industry and government urge young people to prepare quickly for immediate employment.

Our catalog is free and will point the way. Write for it.

C. H. HUSSON, President

We Employ No Solicitors

EASTERN TRUST AND BANKING COMPANY

BANGOR

CAPITAL

\$200,000.00

Surplus and Undivided Profits Earned

\$1,139,000.00

OFFICERS

WILLIAM P. NEWMAN, *President*

HARRY A. LITTLEFIELD, *Vice Pres. and Treas.*

KARL R. PHILBRICK, *Sec. and Trust Officer*

LINWOOD M. COFFIN, *Asst. Treas.*

Compliments

of

Kelleher Funeral Home

Day and Night Service

119 Cedar Street

Dial 2-2122

The “WASH” word

IS

LAUNDROMAT

THE FAMOUS WESTINGHOUSE AUTOMATIC
WASHER WITH THE AMAZING WATER SAVER

The
Bangor Hydro Stores

BEST OF LUCK

to

THE CLASS OF 1950

PENOBSCOT HOTEL

COMMERCIAL BANKING

SERVING
EASTERN
MAINE

TRUSTS AND ESTATES

Many customers of this bank opened their first account during their student days.

Young people will find this institution always interested in their welfare and progress.

A checking account in this bank helps establish your credit and standing.

The Merrill Trust Company

MEMBER
FEDERAL RESERVE SYSTEM
FEDERAL DEPOSIT INSURANCE CORPORATION

Dillingham's

BOOK BINDERS

29 Franklin Street

Bangor

Cerlox Plastic Binding

BE RIGHT BUY AT WIGHT'S

SCHOOL JACKETS

SCHOOL SWEATERS

(Your name embroidered free)

Get Official Equipment

at

Your Spalding Store

WIGHT'S

SPORTING GOODS

JOHNSON OUTBOARD MOTORS

Repairs — New — Trade-ins

54 State Street Bangor, Maine

CONNOR

COAL AND WOOD CO.

Coal - Coke - Fuel Oil

Yard

103 South Main St.

Brewer, Maine

Office, 15 Columbia St.

2-0703

STICKNEY AND BABCOCK

for

HEATING SATISFACTION

17 Hammond St. Bangor

Tel. 5664 — 2-0623

Compliments

of

THE JOHN BAPST

MOTHERS'

CLUB

The Rines Company

Ladies' Fine Apparel

Serving Northeastern Maine
for

More Than Half a Century

BRYANT'S

JEWELERS OF BANGOR

Maine's Finest Store for
Diamonds, Watches and Silver
for

Three Generations

46 Main Street Bangor

DAVID BRAIDY

Showing a Fine Selection of
Coats, Suits, Dresses
and Hats Moderately Priced

14 Hammond St. Bangor

*"Up One Flight Where
You Save"*

— SEE —

JOE FLEMING

for
GOODYEAR TIRES

JOSEPH FLEMING CO.

55 to 65 Oak Street

Bangor

THE NEW ATLANTIC
RESTAURANT

Excellent Food, Well Served

66 Main Street

Bangor

Maine

T. D. MOURKAS. *Manager*

MAURICE J. FINESON

374 Center St. Bangor, Me.

*Class Rings, Class Pins and
Awards*

Medals and Trophies

Official Jeweler to
John Bapst High School
Since 1940

Representing

LOREN MURCHISON & Co.

*Compliments
of*

DAVID G. MILLER

General Agent

THE PENN MUTUAL
LIFE INSURANCE
COMPANY

16 Broad Street

BANGOR, MAINE

BROCKWAY'S
FLOWER SHOPPE

Corsages . . . Cut Flowers

15 Central Street

BANGOR

ATLANTIC SEA GRILL

169 Exchange St. Bangor

*"Famous for Shore Dinners
Steaks, Chops and Chicken"*

BANGOR MOTOR GARAGE

225 Main Street

Bangor Maine

Corner of Main

and

Cedar Streets

Specializing in Perfect Quality

Diamonds, Towle Sterling and

All Standard Make Watches

BOYD AND NOYES

Jewelers

WHERE YOU BOUGHT YOUR

John Bapst

Crusader

Stadium

Jackets



JOHN PAUL CO.

Bangor

Compliments

of

RICHARD D. CROWE

Kelley Drug Company, Inc.

Garland St. Pharmacy

Garland at Elm Sts., Tel. 2-0604

Houlihan's Pharmacy

167 State St., Tel. 7844

Bangor Apothecary Shop

207 State St., 4170

The Modern Pharmacy

57 N. Main St., Brewer, Tel. 6328

Compliments of

Knights of Columbus

O'LOUGHLIN'S

*Greenhouses, Gardens
and Flower Shop*

MR. AND MRS. J. P. O'LOUGHLIN

262-266 Mt. Hope Avenue

Telephone 3030

LUGGAGE

Fine Leather Goods

Novelties

*Maine's Oldest and Most
Complete Luggage Store*

Utterback Corporation

44 Broad St.

Bangor, Me.

*Compliments
of*

**DRISCOLL
FUNERAL HOME**

26 Cedar Street

Dial 5528

*Compliments
of*

**THOMAS DAVIS
DAIRY FARMS**

Pasteurized Milk
and
Cream

Veazie Maine

Tel. Bangor 2-2724



WEBBER MOTOR COMPANY

Outer Hammond Street

Bangor, Maine

*Compliments
of*

*The Maine Chapter
College of New Rochelle
Alumnae*

N. SEARLE PERRY

Pasteurized

and

Homogenized

Milk and Cream

Call Bangor 2-0727

Maine's Largest Furniture
Store

FRIEDMAN
FURNITURE COMPANY

Famous for
Quality and Values

Exchange Street
Bangor, Maine

SPORTSWEAR

for

YOUNG MEN

Sport Coats

Sweaters

Jackets

Slacks

Footwear

Suits — Topcoats — Overcoats

M. L. FRENCH AND SON

196 Exchange St. Bangor

PERRY AND MORRILL

MASON CONTRACTORS

31 Broad St.
Bangor, Maine

TEL. 2-1101

Compliments

of

The

GLEE CLUB

Compliments

of

The

League of The

Immaculate

Heart of

Mary

Compliments

of

The

DRAMATIC CLUB

Compliments

of

AL ST. JOHN

Distributor

of

FRIEND'S PASTRY



Values for the Home, Farm,
Automobile and Family

"Shop at Sears and Save"

SEARS, ROEBUCK AND CO.

Bangor, Me.

D A R L I N G ' S

Your DeSoto - Plymouth Dealer

TEL. 5641

97 Oak St. Bangor, Me.

Compliments

of

COYNE STUDIO

132 Main Street

Bangor, Maine

Compliments

of

C. H. MILAN

MAGAZINES - CANDY

HIGHLAND VARIETY STORE

Hampden Highlands, Maine

DRUGS - SUNDRIES - ICE CREAM

Compliments

of

SWEET'S DRUG STORE

26 Main Street

Bangor, Me.

Compliments

of

ROGERS JEWELRY CO.

MUSICAL INSTRUMENTS

Bought, Sold, Repaired, Exchanged

and Rented

VINER'S MUSIC CO.

55 Pickering Square

Compliments

of

THE SYSTEM COMPANY

Compliments

of

JAKE'S CLOTHING STORE

22 Hammond Street

TEL. 5220

Compliments

of

JAY'S VARIETY STORE

Compliments

of

JOHN CONNERS SHOE COMPANY

40 MAIN STREET
BANGOR, MAINE

Compliments

of

PURITAN CANDY
COMPANY

FRANK BROS.

HARDWARE

Everything in General

145 STATE STREET

BANGOR, MAINE

Tel. 5218

FAULKINGHAM'S

Sanitary Barber Shop

"Service with a Smile"

FOUR BARBERS

Compliments

of

MILLER'S
CUT-RATE STORE

210 STATE STREET

BANGOR, MAINE

Compliments

of

PHIL JARVIS

210 GARLAND STREET

BANGOR

HAROLD'S, INC.

14 BROAD STREET

BANGOR, MAINE

Specializing in

WORKING MEN'S

CLOTHES

Compliments

of

GETCHELL BROS., INC.

ICE AND FUEL OIL

106 Oak Street

Bangor, Maine

Phone 5704

GRAVES

TYPEWRITERS and

ADDING MACHINES

Sales - Service - Supplies

189 Exchange Street

Bangor, Maine

Phone 8060

Coal

Stokers

Keep the Home Fires Burning
with Fuel from

DOYLE AND CARTER

Tel. 7468

Brewer

Coke

Oil

Compliments
of

B. C. M.

and

BRISTOL
CIGARS

LANDRY'S

ELECTRIC APPLIANCES

Phone 2-3135

43 Center St.

Brewer, Me.

Compliments
of

THE BANGOR HOUSE

DONALD PRATT CO.

Diamond Merchants

and

Jewelers

18 Hammond Street

Bangor, Me.

Tel. 4350

STANCHFIELD'S

Donut Shop — Coffee Bar

22 Franklin Street

Bangor

"Meet you at Stanchfield's
for Coffee"

THE ENTERPRISE

SMART SHOES

60 Main St.

Bangor, Me.

ALLAN LEWIS

COMPANY

175-181 EXCHANGE ST.

BANGOR, MAINE

Best Wishes of

HUGH JAMESON

SCHOOL OF POPULAR MUSIC

16 Broad St.

BANGOR NURSERY

FLOWER SHOP

1000 State Street 9 Hammond St.

Tel. 6144

Tel. 3410

Bangor, Maine

W. T. GRANT CO.

Your Friendly

4 - STORES - IN - 1

IN BANGOR

6 Central St.

Bangor

All the Newest

PRESCRIPTIONS

SPECIALTIES

POST OFFICE PHARMACY

78-82 Harlow St.

Bangor, Me.

Compliments

of

SACRED HEART

SOCIETY

DAKIN'S

Maine's

Largest

DAKIN'S

New England's

Finest

DAKIN'S

SPORTING GOODS

Bangor - Waterville

MacGregor-Goldsmith Equipment

Converse Athletic Footwear

The New Dakin's Store

28 Broad St., Bangor

The Old Reliable Store

25 Central St., Bangor

ROGAN'S GRANITE AND
MARBLE WORKS

458 Ohio Street

Opp. Mt. Pleasant Cemetery

W. A. ROGAN

Compliments

of

FRANK'S BAKE SHOP

"Where good means the Best"

199 State St.

Bangor

Tel. 6710

Compliments

of

THURSTON & KINGSBURY

WHOLESALE GROCERS

48-54 Broad Street

Bangor, Maine

CALL

CLENDENNING

SHELL

HEATING OILS

Dial 2-3255

C U

At

PROUT'S DOG HOUSE

For a Buttered Toasted

Hot Dog and Hamburger

Lower Main St.

Bangor

Deliciously Different Sandwiches
of All Kinds

*Our Hamburgers are made
Not Accumulated*

PEOPLE'S FISH MARKET

Wholesale and Retail Dealers

Telephone 5636

120 Broad St.

Bangor, Me.

CENTRAL WELDING CO.

Electric and Acetylene Welding

Portable and Shop Equipment

Day and Night Service

Anything, Anywhere, Anytime

Lower Main St. Tel. Bangor 8695

Compliments

of

HAROLD J. McGINN

RIDING APPAREL
AND EQUIPMENT

Everything for the
Smart Rider
Popular Prices



Opp. Merrill Trust Co.
Bangor, Maine

DODGE CLOTHES

For Men and Young Men

Factory to You

89 Main Street

BANGOR, MAINE

SEE

JOE FLEMING

FOR

GOODYEAR TIRES

Joseph H. Fleming Co.

55-65 Oak St.

Bangor

COMPLIMENTS

OF

THE XAVERIAN
BROTHERS

SACRED HEART
SOCIETY