

1934

# Bangor Hydro Electric Company: Transition System Book 5

Bangor Hydro Electric Company

Follow this and additional works at: [https://digicom.bpl.lib.me.us/bangorhydro\\_linework](https://digicom.bpl.lib.me.us/bangorhydro_linework)

---

## Recommended Citation

Bangor Hydro Electric Company, "Bangor Hydro Electric Company: Transition System Book 5" (1934). *Line Work*. 3.  
[https://digicom.bpl.lib.me.us/bangorhydro\\_linework/3](https://digicom.bpl.lib.me.us/bangorhydro_linework/3)

This Book is brought to you for free and open access by the Bangor Hydro Electric Company at Bangor Community: Digital Commons@bpl. It has been accepted for inclusion in Line Work by an authorized administrator of Bangor Community: Digital Commons@bpl. For more information, please contact [ccoombs@bpl.lib.me.us](mailto:ccoombs@bpl.lib.me.us).

BOOK 5

TRANSMISSION SYSTEM

J. O. 6007 Bangor Hydro-Electric Co.

INDEX TO PHOTOGRAPHS

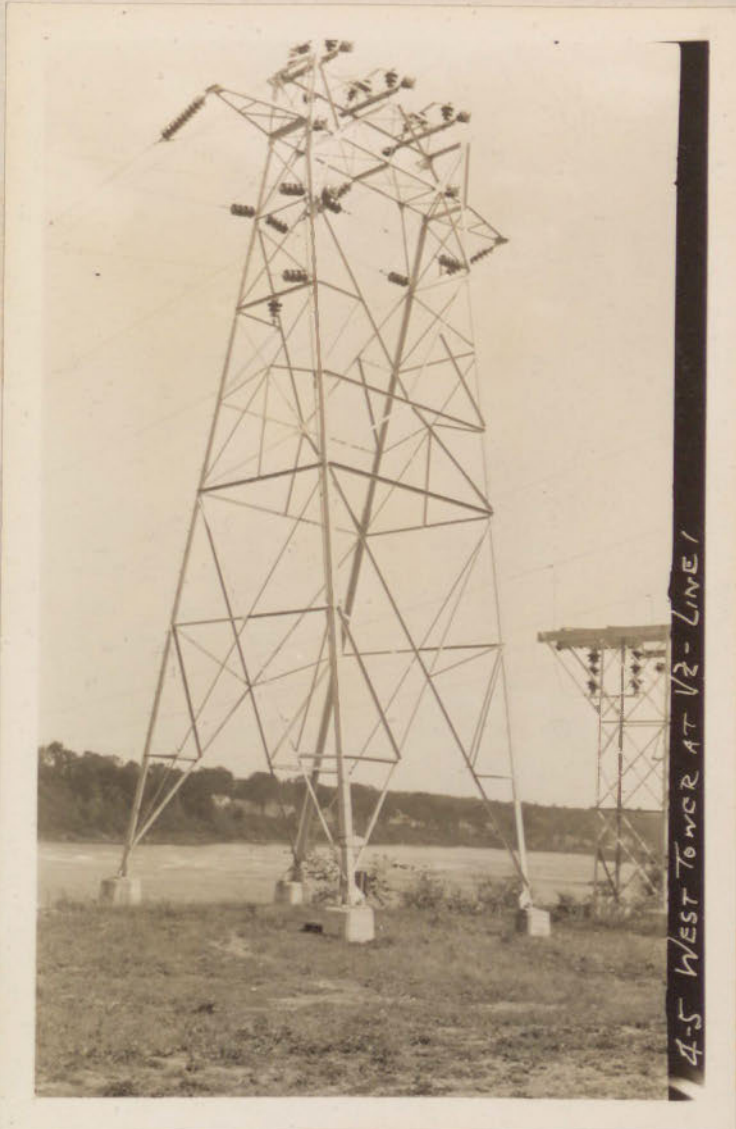
Photo. No.  
S. & W. Appraisal  
J. O. 6007

Book No. 5  
Vol. No.

TRANSMISSION SYSTEM

	<u>From -- To</u>	<u>Line No.</u>
732	Veazie-Ellsworth	1
742	Ellsworth-Bar Harbor	2
753	Ellsworth-Eastport	3
761	Veazie-Milford	4
766	Veazie-Stanford	5
774	Stanford-Lincoln	6
780	Veazie-South Brewer	9
782	Ellsworth-Bluehill	10
786	Bluehill-Sargentville	11
793	Bar Harbor-Northeast Harbor	12
796	Bar Harbor-Hall's Quarry	13
797	East Franklin-Winter Harbor	15
801	Harrington-Cherryfield	16
802	Harrington-Addison	18
804	Addison-Jonesport	19
805	Burns Corner-Southwest Harbor	29
807	Veazie-Park St.	31 & 32
812	Veazie-Orono	36
816	Line 39-No. Me. Junction	38
817	Park St.-Charleston	39
822	Veazie-Park St.	41 & 42
827	Medway-Millinocket	43
832	Junctions Lines 45 and 50	45 & 50
833	Veazie-Basin Mills	47
837	Stillwater-Basin Mills	48 & 49
838	Howland-Chester	50
848	Veazie-Bucksport	65

J. O. 6007



## TRANSMISSION SYSTEM

Tower at Veazie for Line to Ellsworth

Inspection and Field Inventory by Waite on August 2, 1934



J. O. 6007



## TRANSMISSION SYSTEM

Towers at Veazie for Lines to Bucksport and Ellsworth

Inspection and Field Inventory by Waite on August 2, 1934

J. O. 6007



## TRANSMISSION SYSTEM

Pole 983 Veazie to Ellsworth Line

Inspection and Field Inventory by Waite on August 15, 1934

J. O. 6007



## TRANSMISSION SYSTEM

Pole 256 Veazie to South Brewer

Inspection and Field Inventory by Waite on July 31, 1934



J. O. 6007



## TRANSMISSION SYSTEM

Pole 984 Veazie to Ellsworth Line

Inspection and Field Inventory by Waite on August 15, 1934



J. O. 6007



TRANSMISSION SYSTEM

Pole 999 Veazie to Ellsworth Line

Inspection and Field Inventory by Waite on August 15, 1934

J. O. 6007



## TRANSMISSION SYSTEM

Pole 778 Veazie to Ellsworth Line

Inspection and Field Inventory by Waite on August 15, 1934

J. O. 6007



27-2 VEAZIE ELLSWORTH 1-772

## TRANSMISSION SYSTEM

Pole 772 Veazie to Ellsworth Line

Inspection and Field Inventory by Waite on August 15, 1934



J. O. 6007



## TRANSMISSION SYSTEM

Pole 692 Veazie to Ellsworth Line, with Transposition

Inspection and Field Inventory by Waite on August 15, 1934



J. O. 6007



## TRANSMISSION SYSTEM

Pole at Nicolin on Veazie-Ellsworth Line  
with Switch

Inspection and Field Inventory by Waite on August 16, 1954

J. O. 6007

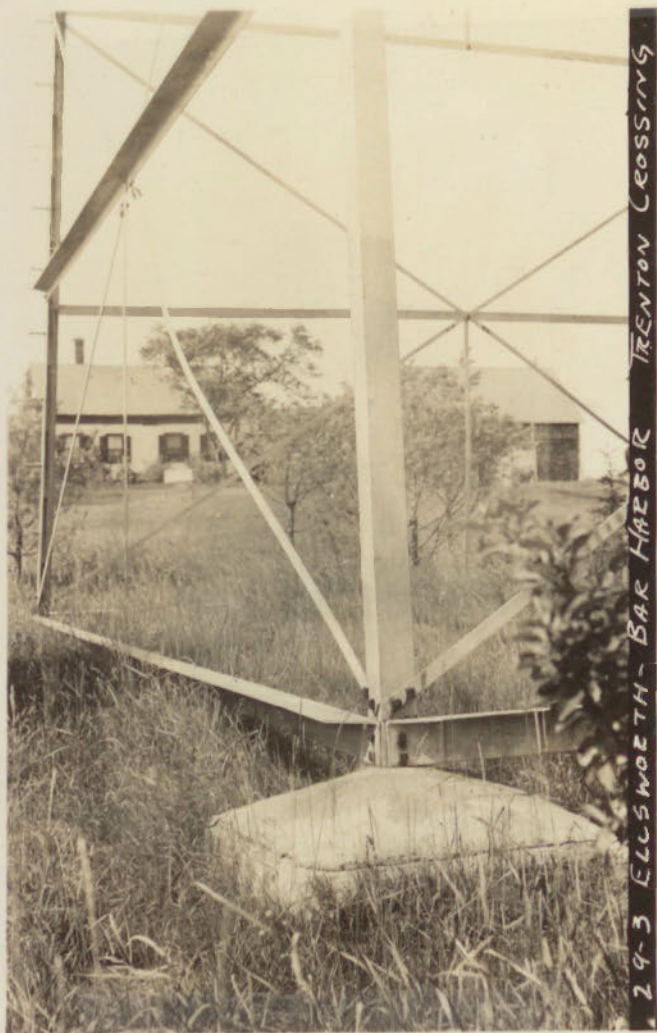


## TRANSMISSION SYSTEM

Pole (Steel) in Ellsworth on Bar Harbor Line

Inspection and Field Inventory by Waite on August 16, 1934

J. O. 6007



## TRANSMISSION SYSTEM

Tower at Trenton Channel on Bar Harbor Line

Inspection and Field Inventory by Waite on August 16, 1934



J. O. 6007



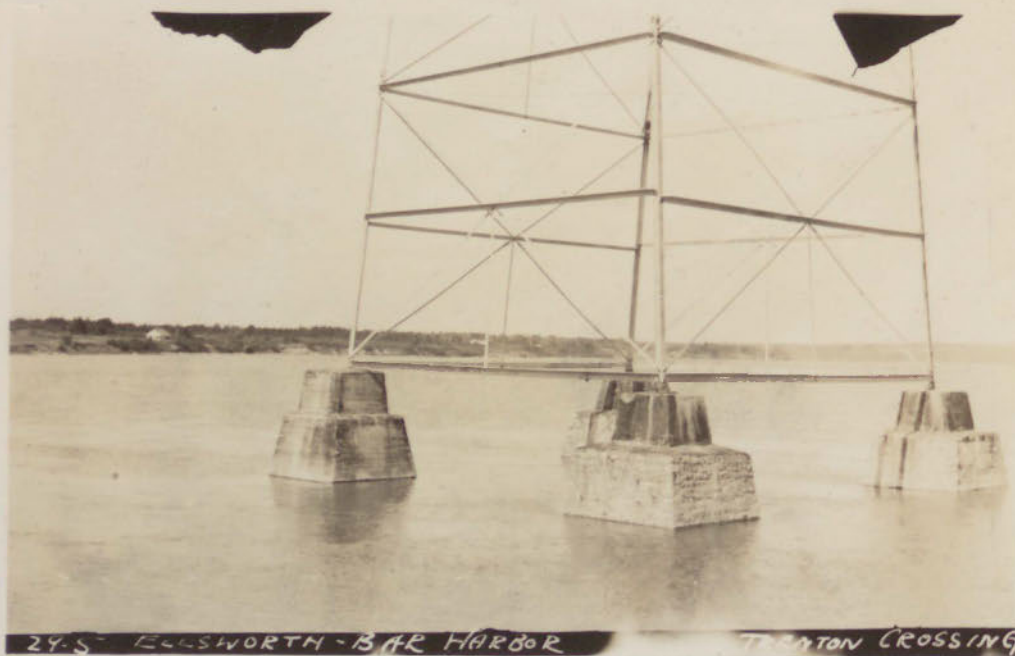
## TRANSMISSION SYSTEM

Tower at Trenton Channel on Bar Harbor Line

Inspection and Field Inventory by Waite on August 16, 1934



J. O. 6007

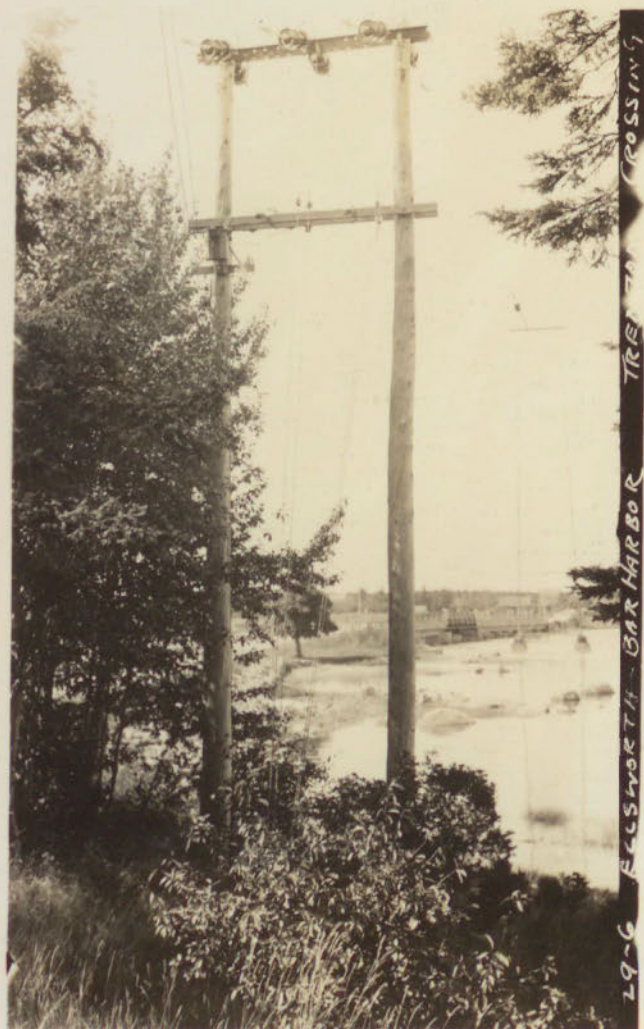


## TRANSMISSION SYSTEM

Tower at Trenton Channel on Bar Harbor Line

Inspection and Field Inventory by Waite on August 16, 1934

J. O. 6007



## TRANSMISSION SYSTEM

Frame at Trenton Channel on Bar Harbor Line

Inspection and Field Inventory by Waite on August 16, 1934

J. O. 6007

30-1 Burns Corner - Southwest Harbor 2-499



## TRANSMISSION SYSTEM

Pole 499 at Burns Corner on Bar Harbor Line

Inspection and Field Inventory by Waite on August 16, 1934



J. O. 6007



## TRANSMISSION SYSTEM

Pole 129 on Ellsworth to Bar Harbor Line

Inspection and Field Inventory by Waite on August 17, 1934



J. O. 6007



## TRANSMISSION SYSTEM

Tower at Trenton Channel on Bar Harbor Line

Inspection and Field Inventory by Waite on August 17, 1934

J. O. 6007

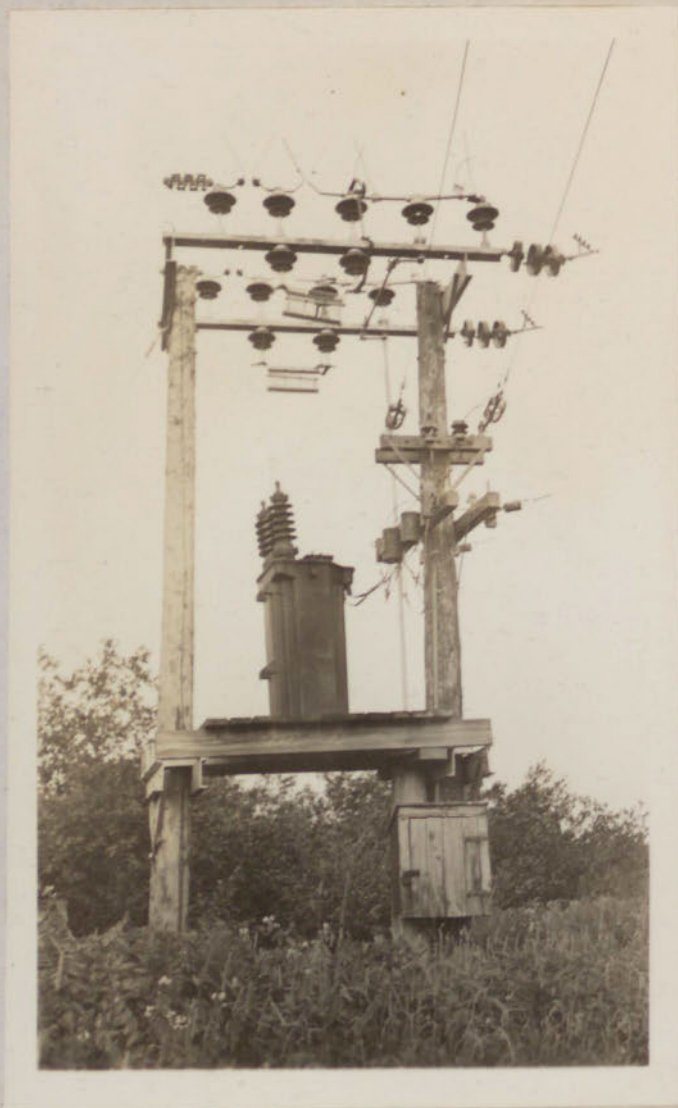


## TRANSMISSION SYSTEM

Pole 432 on Ellsworth-Bar Harbor Line

Inspection and Field Inventory by Waite on August 17, 1934

J.O. 6007



TRENTON SUBSTATION

Inspection and Field Inventory by Melville and Stroberg on July 20, 1934



J.O. 6007



TRENTON SUBSTATION

Pole top Switch in Line near Substation

Inspection and Field Inventory by Melville and Stroberg on July 20, 1934

J. O. 6007



## TRANSMISSION SYSTEM

Pole 456 on Washington County Line

Inspection and Field Inventory by Waite on August 22, 1934

J. O. 6007



## TRANSMISSION SYSTEM

Pole 925 on Washington County Line, with Mill Bridge  
Line below

Inspection and Field Inventory by Waite on August 23, 1934



J. O. 6007



## TRANSMISSION SYSTEM

Pole 3136 on Washington County Line, with  
Eastport Distribution

Inspection and Field Inventory by Waite on October 16,  
1934

J. O. 6007



## TRANSMISSION SYSTEM

Pole 1326 on Washington County Line, with Columbia Falls  
Distribution

Inspection and Field Inventory by Waite on October 17, 1934

J. O. 6007



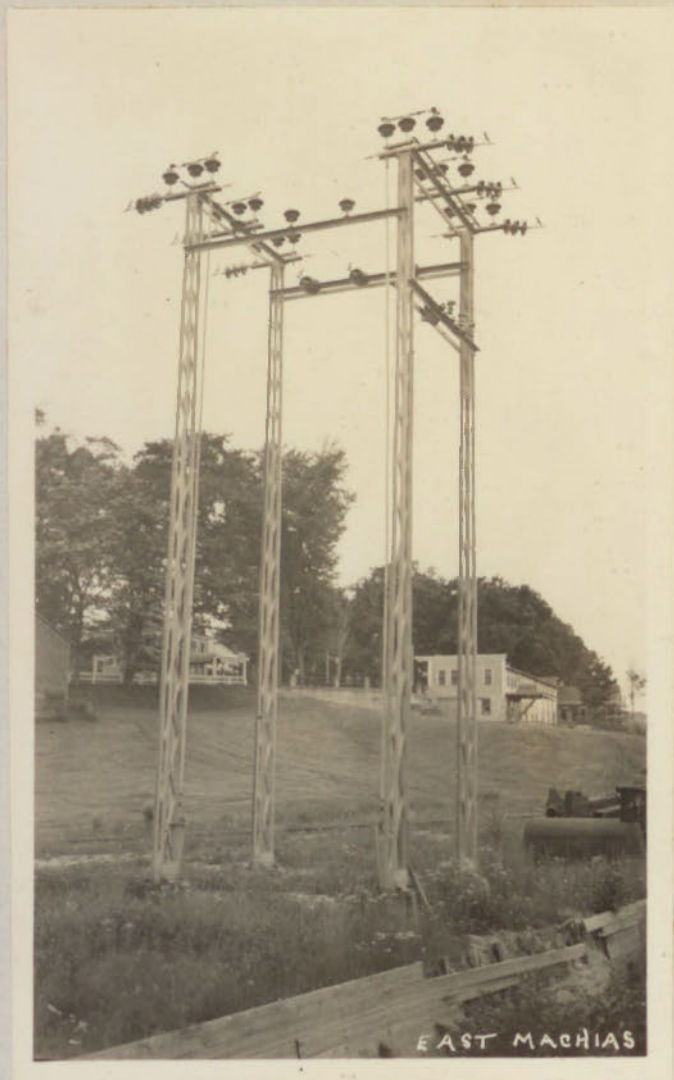
## TRANSMISSION SYSTEM

Pole 1134 on Washington County Line, with Harrington  
Distribution

Inspection and Field Inventory by Waite on October 17, 1934



J.O. 6007



SUBSTATION AT EAST MACHIAS POWER STATION

33 kv. Pole Top Switch on Steel Structure adjacent to Substation

Inspection and Field Inventory by Melville and Stroberg on July 25, 1934

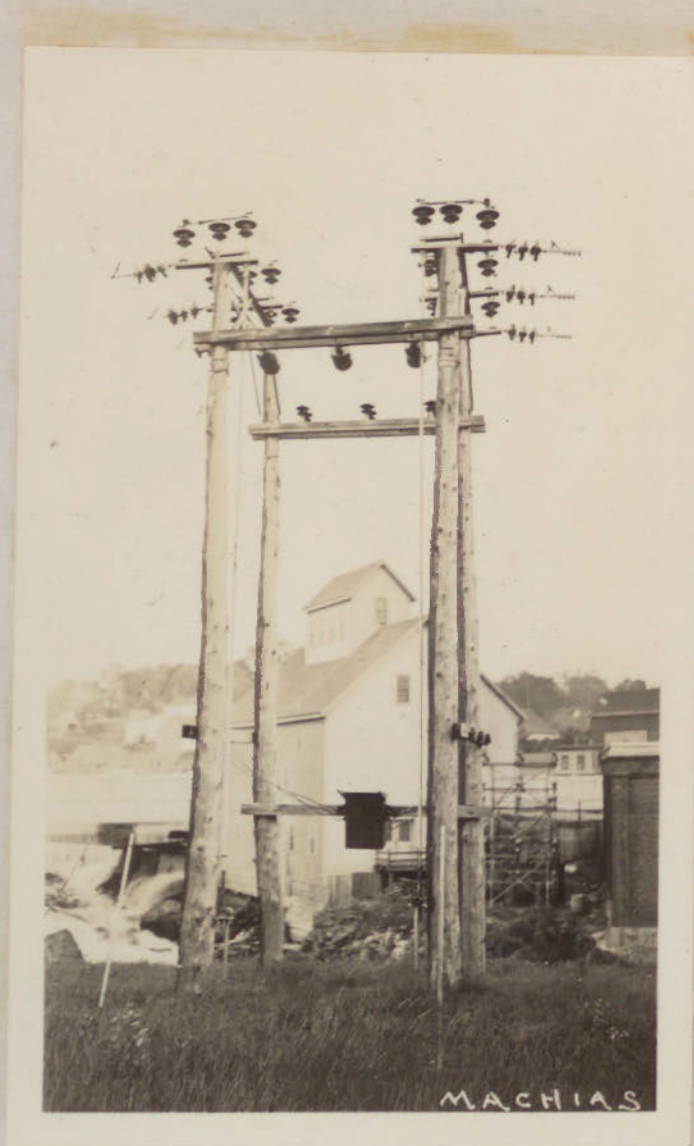
J.O. 6007



SUBSTATION AT IRON WORKS POWER STATION

Air Break Switch in 33 kv. Line on Pole adjacent to Substation

J.O. 6007



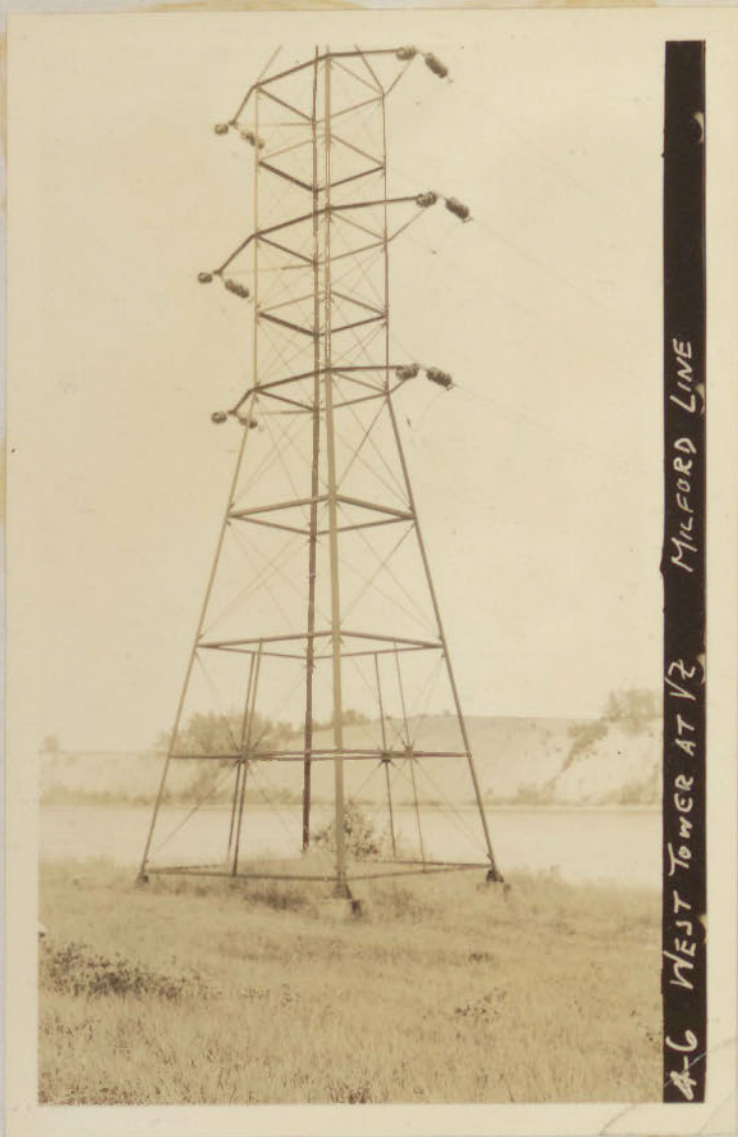
SUBSTATION AT MACHIAS POWER STATION

Air Break Switches in 33 kv. Line on Wood Pole Structure

Adjacent to Substation



J. O. 6007

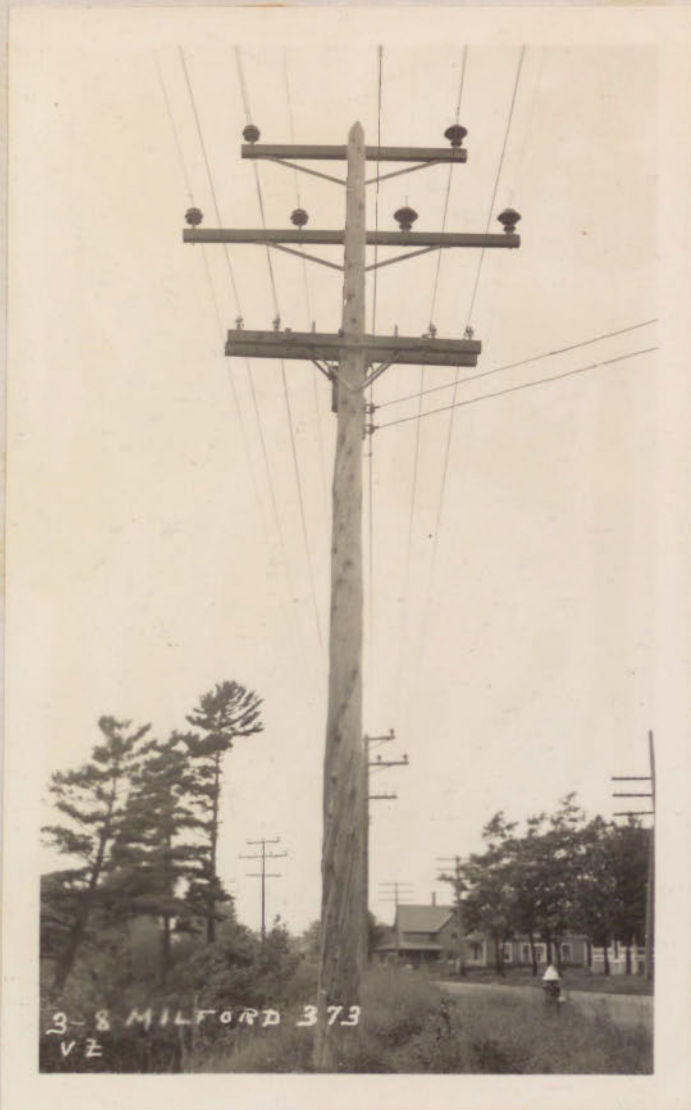


## TRANSMISSION SYSTEM

Tower at Veazie for Line to Milford

Inspection and Field Inventory by Waite on August 2, 1934

J. O. 6007



## TRANSMISSION SYSTEM

" Pole 373 Veazie to Milford with Distribution

Inspection and Field Inventory by Waite on August 1, 1934

J. O. 6007



## TRANSMISSION SYSTEM

Pole 371 Veazie to Milford with Distribution

Inspection and Field Inventory by Waite on August 1, 1934



J. O. 6007



## TRANSMISSION SYSTEM

Pole 327 Veazie to Milford Steel Pole

Inspection and Field Inventory by Waite on August 1, 1934

J. O. 6007



## TRANSMISSION SYSTEM

Pole 320 Veazie-Milford Line, with Distribution

Inspection and Field Inventory by Waite on August 10, 1934

J. O. 6007



## TRANSMISSION SYSTEM

Pole 1050 Stanford to Milford Line

Inspection and Field Inventory by Waite on August 14, 1934



J. O. 6007



## TRANSMISSION SYSTEM

Pole 1040 Stanford to Milford Line  
with Street Light

Inspection and Field Inventory by Waite on August 14, 1934

J. O. 6007



TUBULAR STEEL POLES ON STANFORD-MILFORD LINE AT GREENBUSH

Inspection and Field Inventory by Waite on August 15, 1934

J. O. 6007



## TRANSMISSION SYSTEM

Pole 911 Milford- Stanford Line

Inspection and Field Inventory by Waite on August 20, 1934



J. O. 6007



## TRANSMISSION SYSTEM

Pole 1030 Stanford to Milford with Distribution

Inspection and Field Inventory by Waite on August 20, 1934

J. O. 6007



## TRANSMISSION SYSTEM

Pole 1044 Stanford to Milford, with Distribution

Inspection and Field Inventory by Waite on August 20, 1934

J.O. 6007

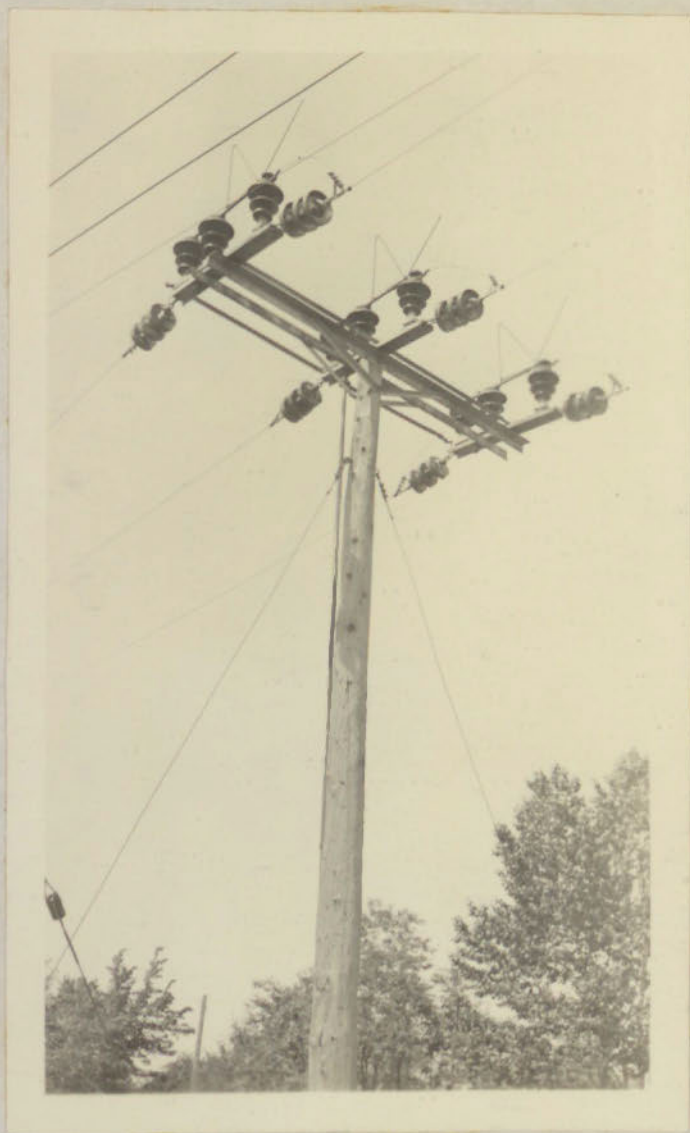


COSTIGAN SUBSTATION (Milford)

Inspection and Field Inventory by Stroberg on August 1, 1934



J. O. 6007



## MILFORD POWER STATION

Air Break Switch on Wood Pole Near Power Station

44 KV, 3 phase, 60 cycle Line

J. O. 6007



## TRANSMISSION SYSTEM

Pole 306 Lincoln to Stanford Line

Inspection and Field Inventory by Waite on August 14, 1934

J. O. 6007



## TRANSMISSION SYSTEM

Pole 18 Stanford to Lincoln with Distribution

Inspection and Field Inventory by Waite on August 20, 1934



J. O. 6007



## TRANSMISSION SYSTEM

Pole 12 Stanford to Lincoln with Distribution

Inspection and Field Inventory by Waite on August 20, 1934

J. O. 6007

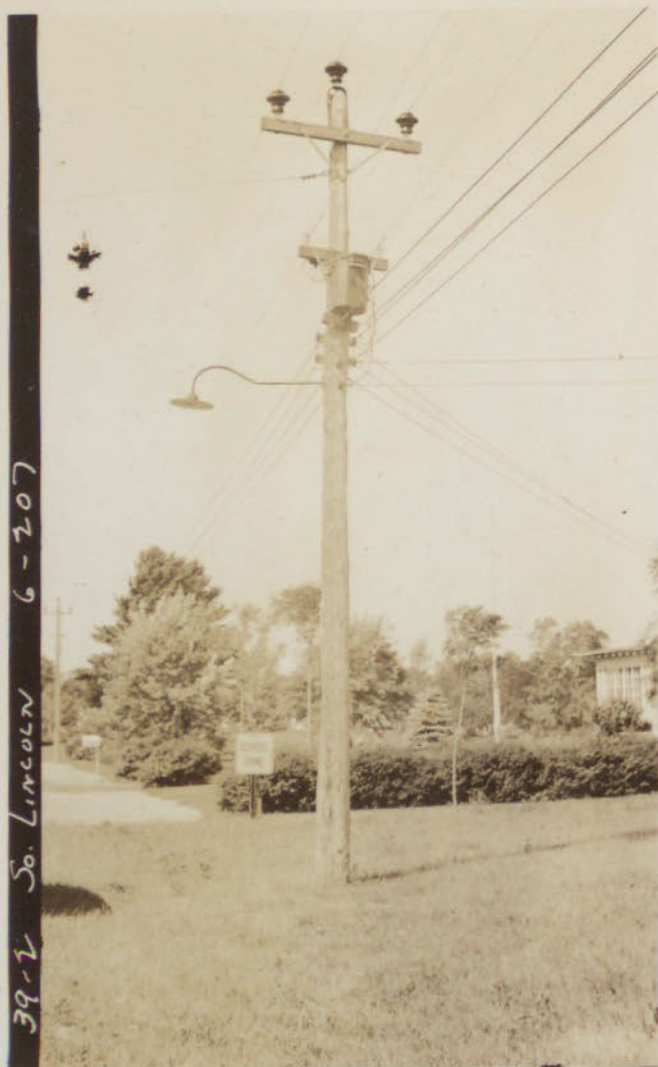


## TRANSMISSION SYSTEM

Pole 217 on Lincoln-Stanford Line with Lincoln Distribution

Inspection and Field Inventory by Waite on August 24, 1934

J. O. 6007



39-2 So. Lincoln 6-207

## TRANSMISSION SYSTEM

Pole 207 on Lincoln-Stanford Line with Lincoln Distribution

Inspection and Field Inventory by Waite on August 24, 1934



J.O. 6007



LINCOLN SUBSTATION-(Eastern Mfg. Co.)

Switch in 44KV Line

Inspection and Field Inventory by Melville and Stroberg on June 26, 1934

J. O. 6007



## TRANSMISSION SYSTEM

Pole 252 Veazie to South Brewer

Inspection and Field Inventory by Waite on July 31, 1934

J. O. 6007



## TRANSMISSION SYSTEM

Tower Veazie to South Brewer at River Crossing

Inspection and Field Inventory by Waite on August 1, 1934



J. O. 6007



## TRANSMISSION SYSTEM

Pole 14 on Ellsworth to Bluehill Line

Inspection and Field Inventory by Waite on August 16, 1934

J. O. 6007



## TRANSMISSION SYSTEM

Pole 15 on Ellsworth to Bluehill Line, with Double Arm

Inspection and Field Inventory by Waite on August 16, 1934

J. O. 6007



## TRANSMISSION SYSTEM

Pole 113 on Ellsworth to Bluehill Line, with  
Deep End

Inspection and Field Inventory by Waite on August 16, 1934



J. O. 6007

31-6 ELLSWORTH BLUE HILL PATROL BRIDGE



PATROL BRIDGE ON ELLSWORTH-BLUEHILL LINE

Inspection and Field Inventory by Waite on August 20, 1934

J. O. 6007



## TRANSMISSION SYSTEM

Pole 66 on Bluehill to Sargentville Line

Inspection and Field Inventory by Waite on August 16, 1934



J. O. 6007



## TRANSMISSION SYSTEM

Pole 110 on Bluehill to Sargentville Line, with Alley Arm

Inspection and Field Inventory by Waite on August 16, 1934



J. O. 6007

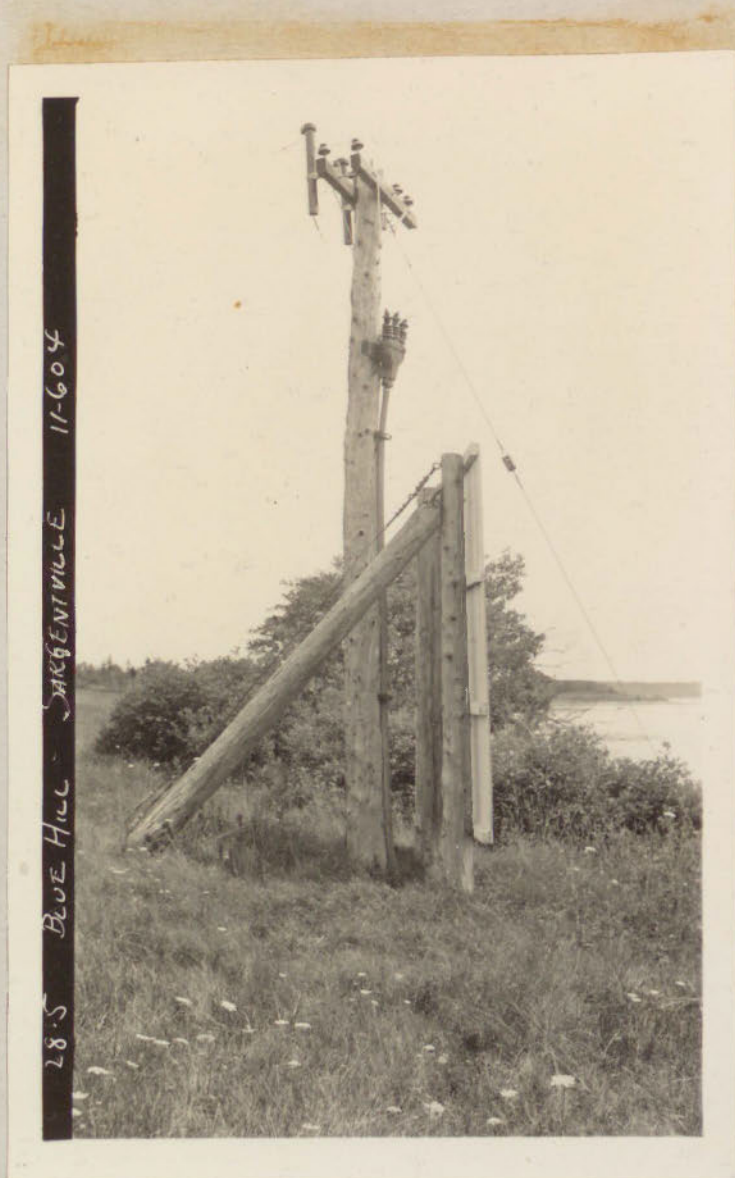


## TRANSMISSION SYSTEM

Pole on Bluehill to Sargentville Line with Transformer

Inspection and Field Inventory by Waite on August 16, 1934

J. O. 6007

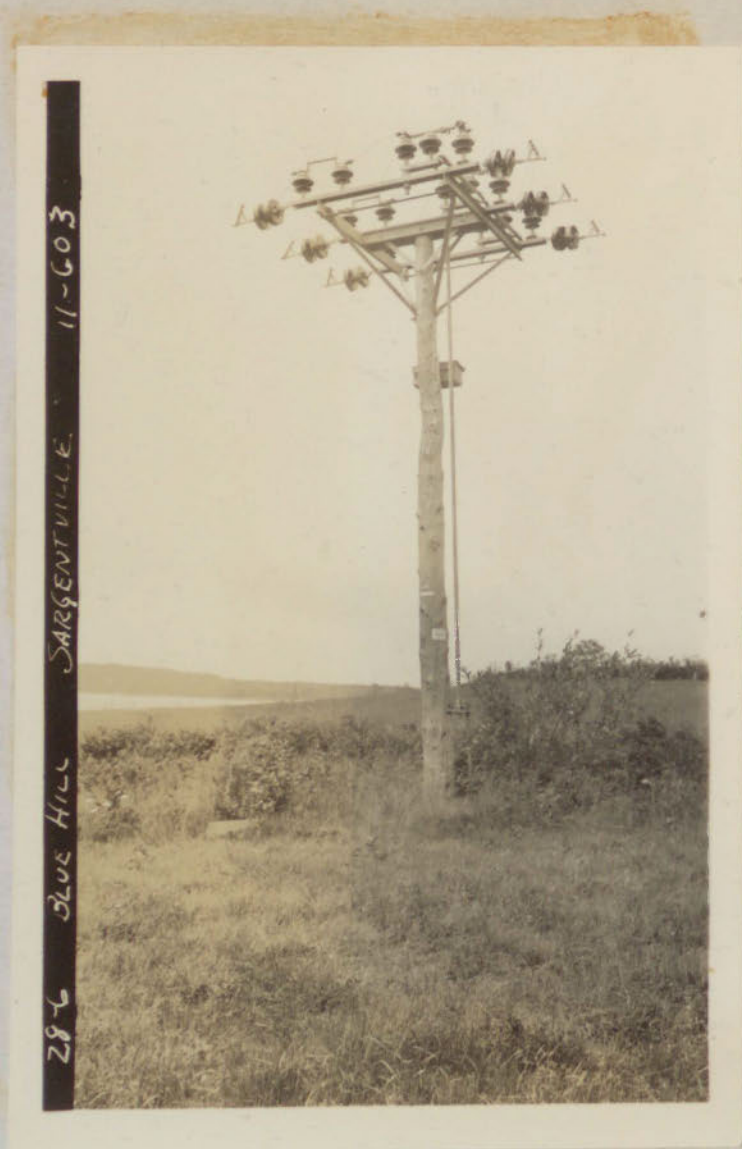


TRANSMISSION SYSTEM

Pole 604 with Deer Island Submarine Terminal

Inspection and Field Inventory by Waite on August 16, 1934

J. O. 6007



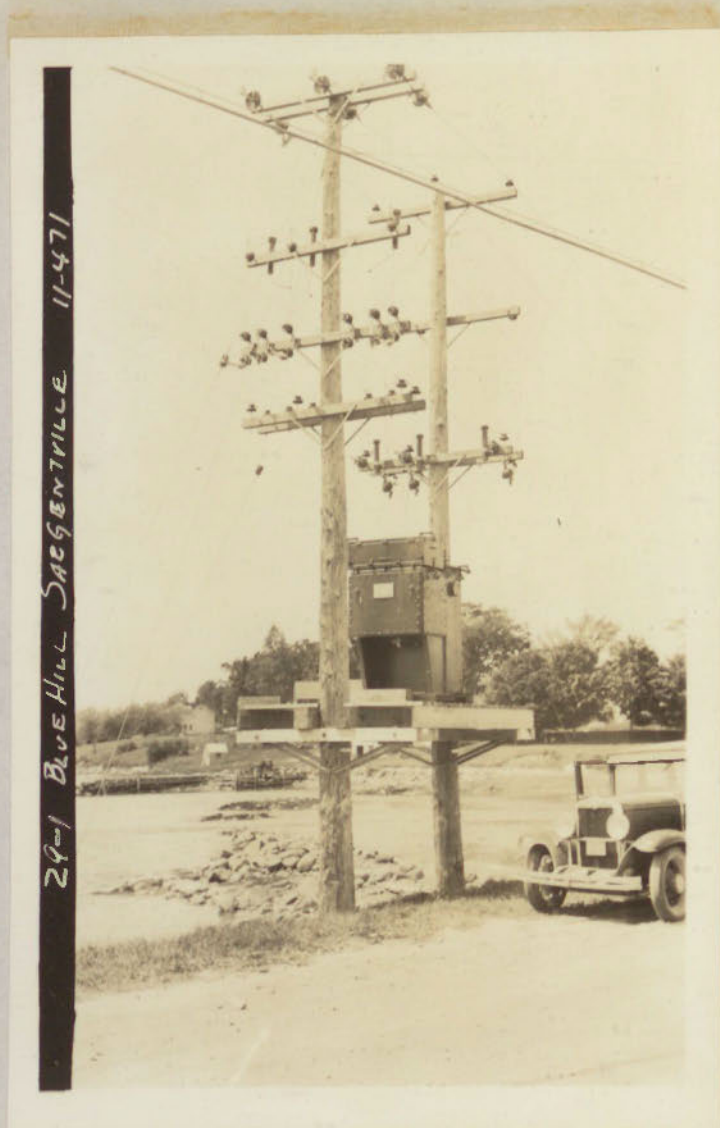
## TRANSMISSION SYSTEM

Pole 603 with Deer Island Line Switch

Inspection and Field Inventory by Waite on August 16, 1934



J. O. 6007



## TRANSMISSION SYSTEM

Pole 471 in Sedgwick with Booster Regulator

Inspection and Field Inventory by Waite on August 16, 1934

J. O. 6007



## TRANSMISSION SYSTEM

Pole 11-729, with Brooklyn Distribution

Inspection and Field Inventory by Waite on October 19, 1934



J. O. 6007



## TRANSMISSION SYSTEM

Pole 65 on Northeast Harbor Line

Inspection and Field Inventory by Waite on August 17, 1934



J. O. 6007



## TRANSMISSION SYSTEM

Pole 235 on Northeast Harbor Line

Inspection and Field Inventory by Waite on August 17, 1934

J. O. 6007



## TRANSMISSION SYSTEM

Pole 241 on Northeast Harbor Line

Inspection and Field Inventory by Waite on August 17, 1934



J. O. 6007



## TRANSMISSION SYSTEM

Pole with Southwest Harbor and Hall's Quarry Lines

Inspection and Field Inventory by Waite on August 16, 1934



J. O. 6007



## TRANSMISSION SYSTEM

Pole 24 on Winter Harbor Line

Inspection and Field Inventory by Waite on August 23, 1934

J. O. 6007



## TRANSMISSION SYSTEM

Pole 164 on Winter Harbor Line, with Arresters

Inspection and Field Inventory by Waite on August 23, 1934

J. O. 6007



## TRANSMISSION SYSTEM

Pole on Winter Harbor Line (591)

Inspection and Field Inventory by Waite on August 23, 1934



J. O. 6007



## TRANSMISSION SYSTEM

Tower to Hancock at Wakeag

Inspection and Field Inventory by Waite on August 23, 1984

J. O. 6007



## TRANSMISSION SYSTEM

Pole 164 on Mill Bridge Line

Inspection and Field Inventory by Waite on August 23, 1934

J. O. 6007



## TRANSMISSION SYSTEM

Pole 227 on Jonesport Line, with Addison  
Distribution

Inspection and Field Inventory by Waite on October 17, 1934



J. O. 6007



## TRANSMISSION SYSTEM

Pole 24 on Jonesport Line, with Addison Distribution

Inspection and Field Inventory on October 17, 1934

J. O. 6007



TRANSMISSION SYSTEM

Pole 296 on Jonesport Line

J. O. 6007

30-2 BURNS CORNER - SOUTHWEST HARBOR R. SWITCH



## TRANSMISSION SYSTEM

Pole with Switch on Southwest Harbor Line

Inspection and Field Inventory by Waite on August 16, 1934



J. O. 6007



## TRANSMISSION SYSTEM

Pole with Distribution on Southwest Harbor Line

Inspection and Field Inventory by Waite on August 16, 1934

J. O. 6007



## TRANSMISSION SYSTEM

Pole 71 Line 31-32 Veazie to Park Street

Inspection and Field Inventory by Waite on August 2, 1934

J. O. 6007



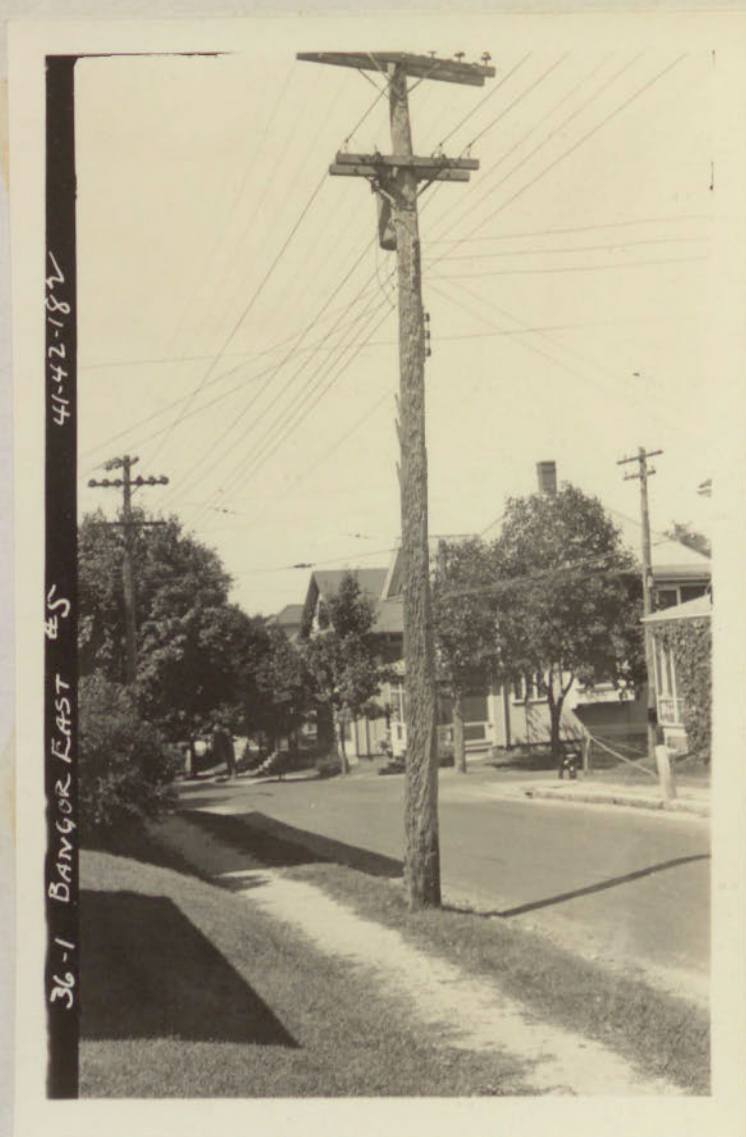
## TRANSMISSION SYSTEM

Pole 215 Line 31-32 Veazie to Park Street

Inspection and Field Inventory by Waite on August 21, 1934



J. O. 6007



## TRANSMISSION SYSTEM

Pole 182 Line 31-32 Veazie to Park Street

Inspection and Field Inventory by Waite on August 21, 1934

J. O. 6007



37-J BANGOR EAST #10 31.32-152

## TRANSMISSION SYSTEM

Pole 152 on 31-32 Line Veazie-Park Street

Inspection and Field Inventory by Waite on August 21, 1934

J. O. 6007



## TRANSMISSION SYSTEM

Pole in Bangor with 13.2 kv. Armored Cable

Inspection and Field Inventory by Waite on August 14, 1934



J. O. 6007



## TRANSMISSION SYSTEM

Pole 1 in Orono-Veazie Line, with Distribution

Inspection and Field Inventory by Waite on August 20, 1934

J. O. 6007

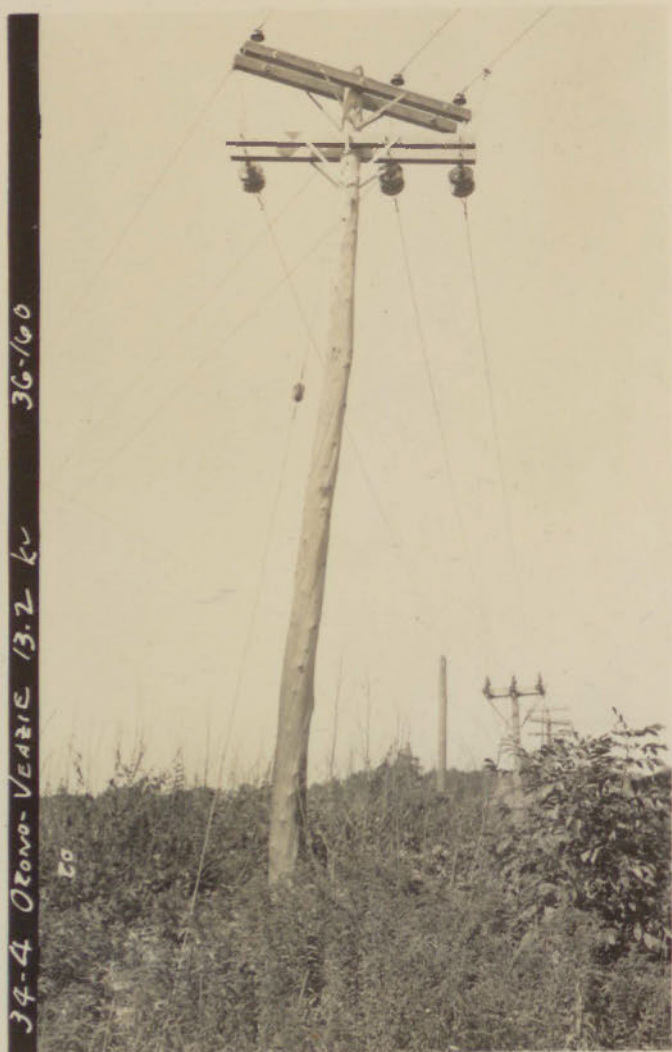


## TRANSMISSION SYSTEM

Pole 75 Orono-Veazie Line, with Distribution

Inspection and Field Inventory by Waite on August 20, 1934

J. O. 6007



## TRANSMISSION SYSTEM

Pole 160 Orono-Veazie Line, with Tap

Inspection and Field Inventory by Waite on August 20, 1934



J. O. 6007



34-3 Orono-Veazie 13.2 kV. 36-172

## TRANSMISSION SYSTEM

Pole 172 Orono-Veazie Line

Inspection and Field Inventory by Waite on August 20, 1934

J. O. 6007

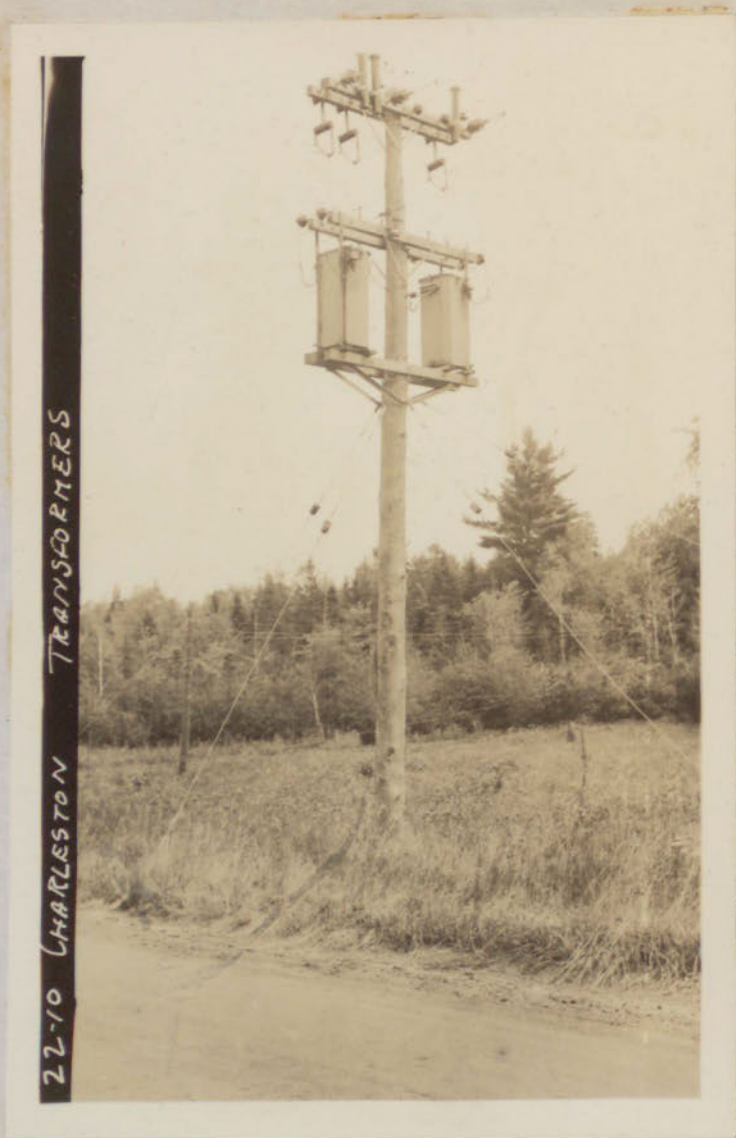


## TRANSMISSION SYSTEM

Pole in Bangor on Line to No. Me. Junction

Inspection and Field Inventory by Waite on August 13, 1934

J. O. 6007



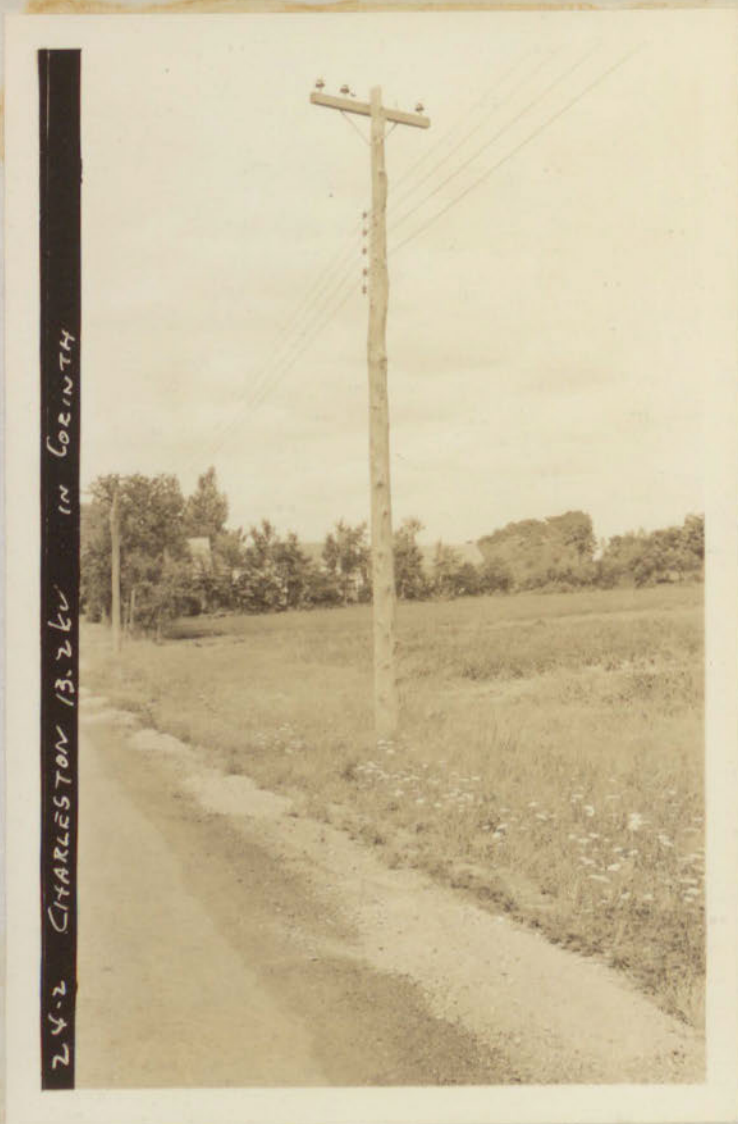
## TRANSMISSION SYSTEM

Pole on Charleston Line, with Distribution Transformer

Inspection and Field Inventory by Waite on August 13, 1934



J. O. 6007



24-2 CHARLESTON 13.2KV IN CORINTH

## TRANSMISSION SYSTEM

Pole in Corinth on Charleston Line, with Distribution

Inspection and Field Inventory by Waite on August 13, 1934

J. O. 6007



## TRANSMISSION SYSTEM

Pole in Corinth on Charleston Line, with Distribution

Inspection and Field Inventory by Waite on August 13, 1934

J. O. 6007



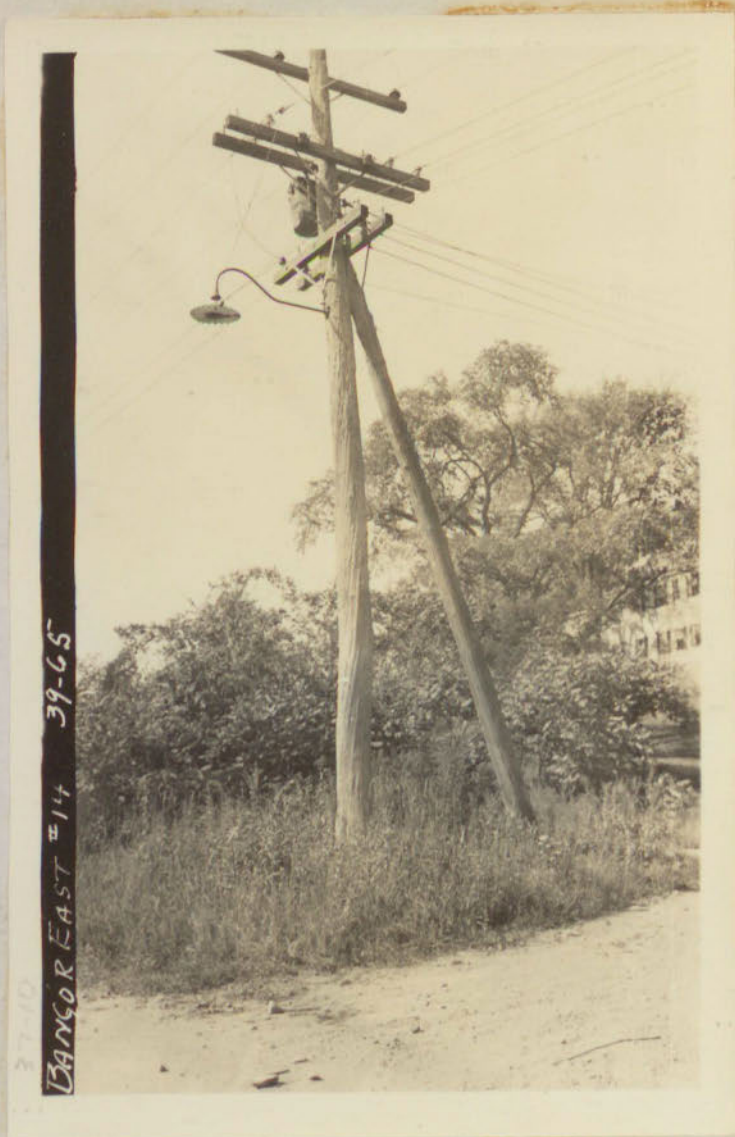
## TRANSMISSION SYSTEM

Pole in Corinth on Charleston Line

Inspection and Field Inventory by Waite on August 13, 1934



J. O. 6007



## TRANSMISSION SYSTEM

Pole 65 on Charleston Line, with Push Brace

Inspection and Field Inventory by Waite on August 21, 1934

J. O. 6007



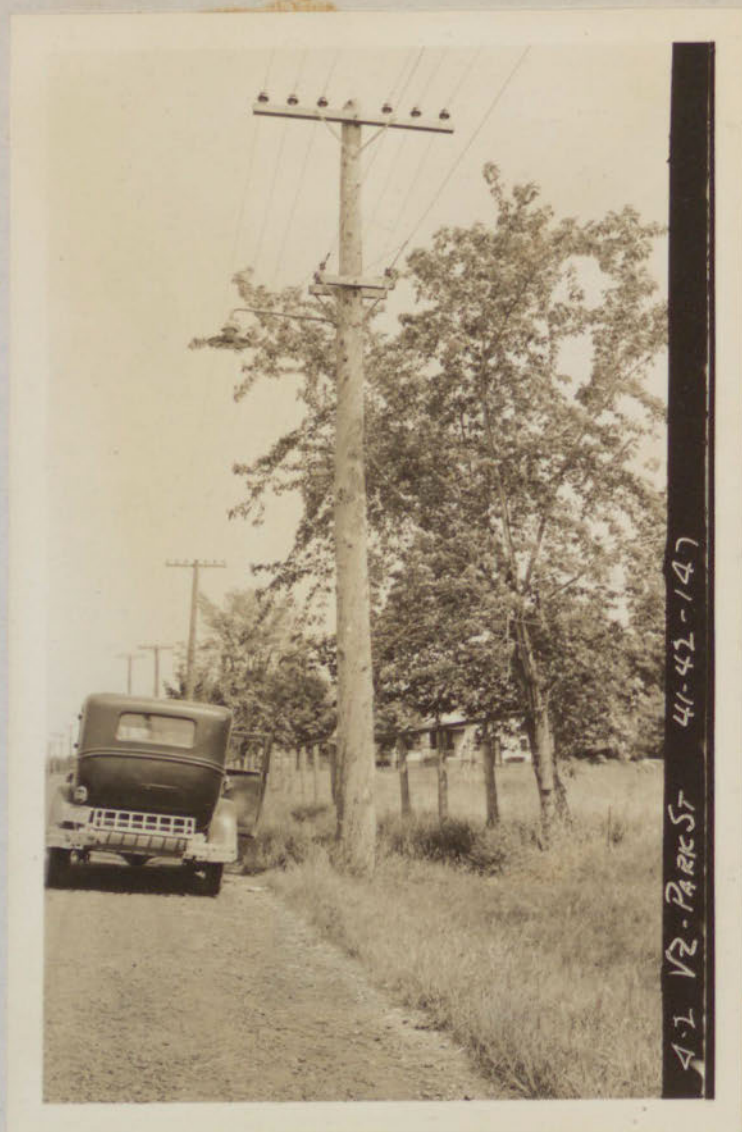
## TRANSMISSION SYSTEM

Pole 183 Line 41-42 Veazie to Park Street

Inspection and Field Inventory by Waite on August 2, 1934



J. O. 6007



## TRANSMISSION SYSTEM

Pole 147 Line 41-42 Veazie to Park Street

Inspection and Field Inventory by Waite on August 2, 1934



J. O. 6007



4-3 VZ-PARK ST. 41-42-126

## TRANSMISSION SYSTEM

Pole 126 Line 41-42 Veazie to Park Street

Inspection and Field Inventory by Waite on August 2, 1934

J. O. 6007

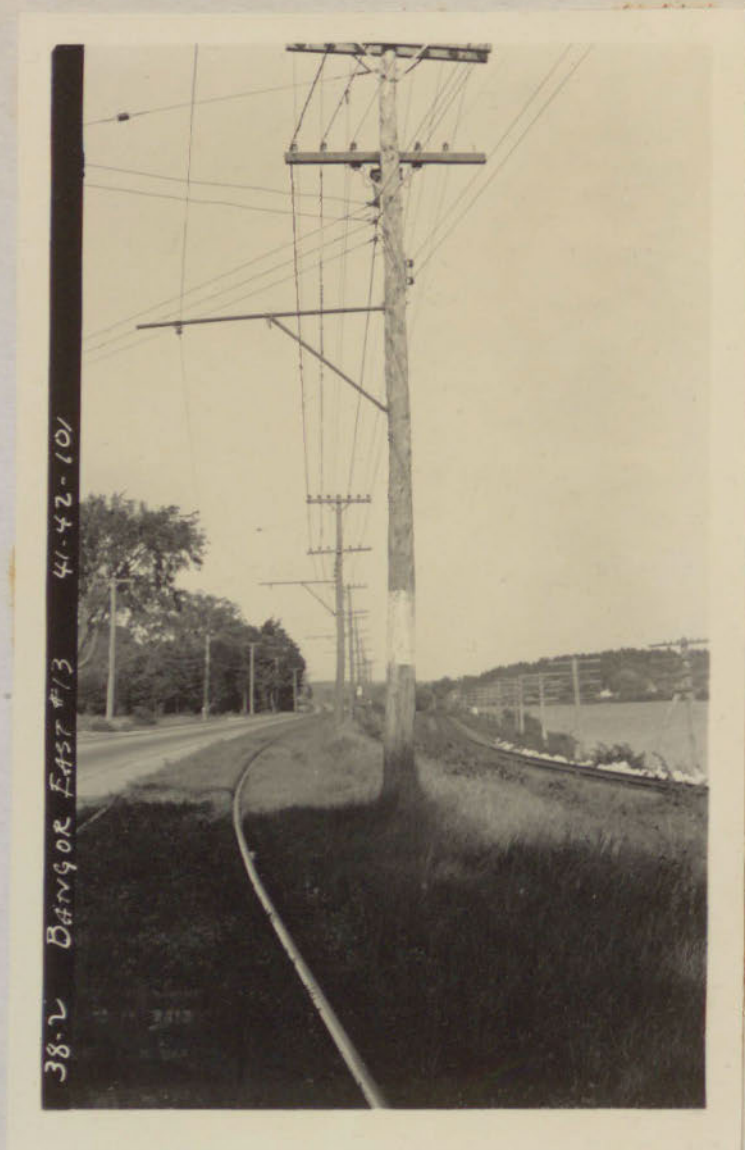


## TRANSMISSION SYSTEM

Pole 79 on 41-42 Line Veazie-Bangor, with Distribution

Inspection and Field Inventory by Waite on August 21, 1934

J. O. 6007



38-2 Bangor East #13 41-42-101

### TRANSMISSION SYSTEM

Pole 101 on 41-42 Line Veazie-Bangor, with Distribution

Inspection and Field Inventory by Waite on August 21, 1934



J. O. 6007



16-3 Millinocket 13 to kv. 43-375

## TRANSMISSION SYSTEM

Pole 375 Medway-Millinocket Line

Inspection and Field Inventory by Waite on August 9, 1934

J. O. 6007



## TRANSMISSION SYSTEM

Pole 346 Medway-Millinocket Line

Inspection and Field Inventory by Waite on August 9, 1934

J. O. 6007



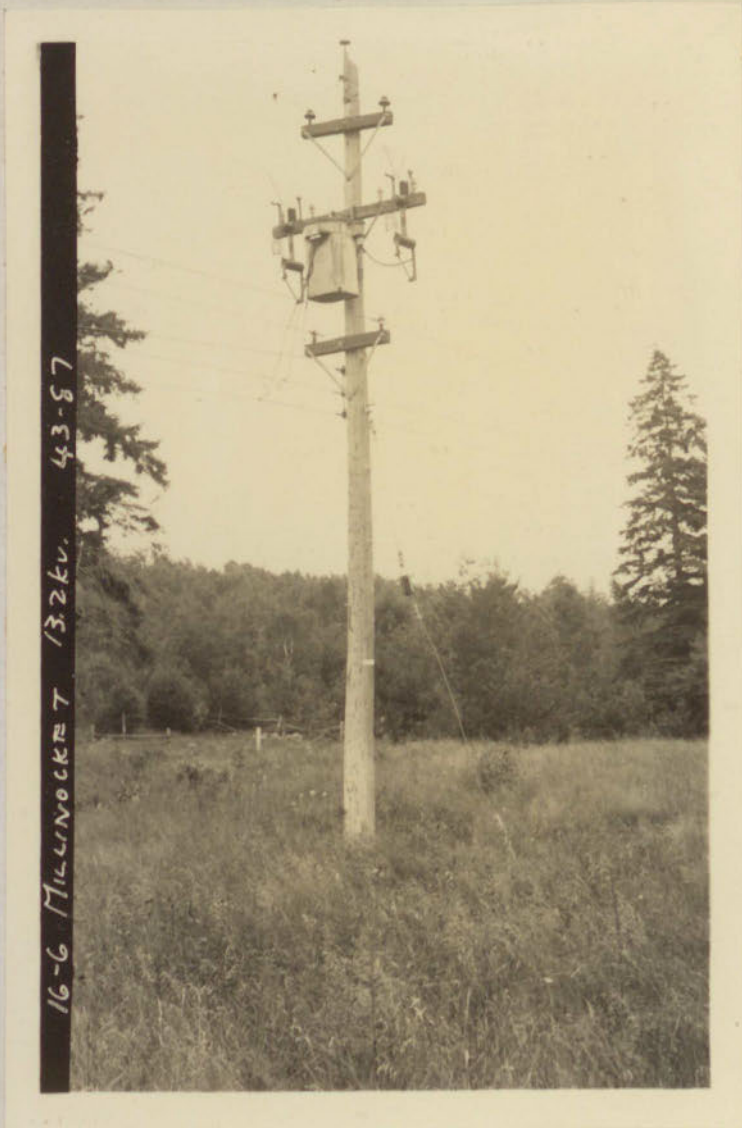
## TRANSMISSION SYSTEM

Pole 189 Medway-Millinocket Line,  
with Crib

Inspection and Field Inventory by Waite on August 9, 1934



J. O. 6007



## TRANSMISSION SYSTEM

Pole 87 Medway-Millinocket Line, with Transformer

Inspection and Field Inventory by Waite on August 9, 1934

J. O. 6007



## TRANSMISSION SYSTEM

Pole 2 Medway to Millinocket with M.P.S. 44 Kv.

Inspection and Field Inventory by Waite on August 9, 1934

J. O. 6007

25-S TOTAWAMKEAGS - HOWLAND 45 10-11



## TRANSMISSION SYSTEM

Poles 10-11 at Junction Medway-Howland-Stanford Lines

Inspection and Field Inventory by Waite on August 14, 1934



J. O. 6007



## TRANSMISSION SYSTEM

Pole 36-177 Veazie-Basin Mills, with Distribution

Inspection and Field Inventory by Waite on August 8, 1934

J. O. 6007

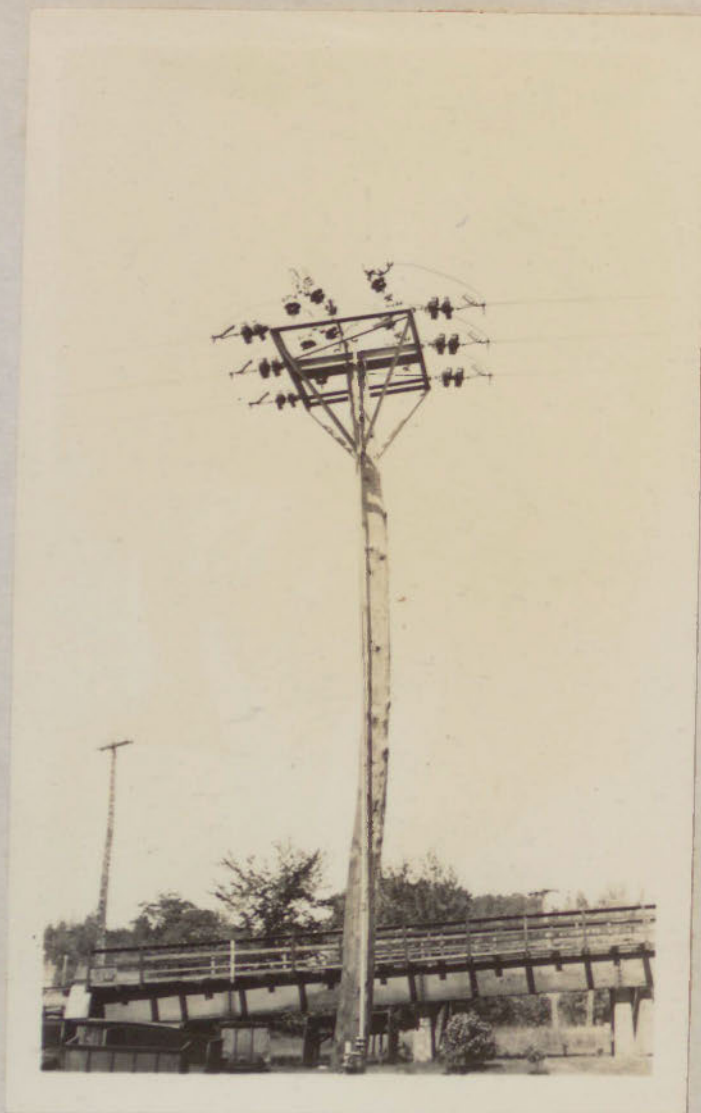


## TRANSMISSION SYSTEM

Pole 36-135 Veazie-Basin Mills, with Distribution

Inspection and Field Inventory by Waite on August 8, 1934

J.O. 6007



ORONO P. & P. CO. SUBSTATION-(Basin Mills, Orono)

Air Break Switch, 6.6 kv. Line, No. 47



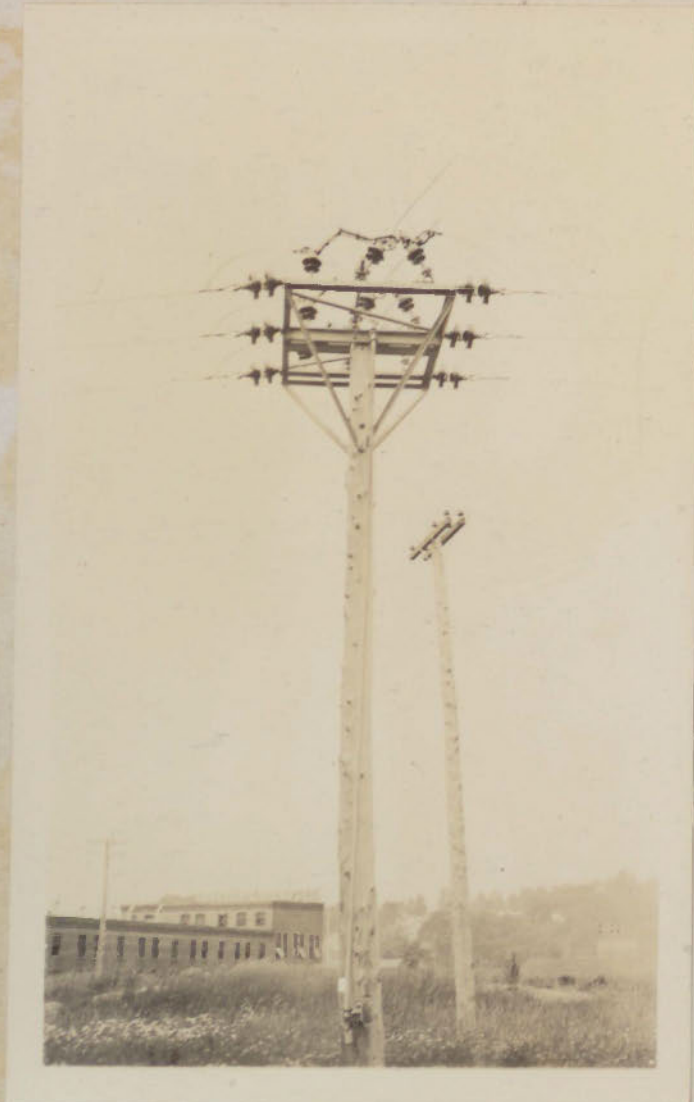
J.O. 6007



ORONO P. & P. CO. SUBSTATION-(Basin Mills, Orono)

Line Pole and Entrance at Steam Turbine Room

J.O. 6007



ORONO P. & P. CO. SUBSTATION-(Basin Mills, Orono)

Air Break Switch, 6.6 kv. Line, No. 48/49

J. O. 6007



TRANSMISSION SYSTEM

Pole 64 Medway to Chester

Inspection and Field Inventory by Waite on August 9, 1934



J. O. 6007



## TRANSMISSION SYSTEM

Pole 123 Medway to Chester, with Stub

Inspection and Field Inventory by Waite on August 9, 1934

J. O. 6007



## TRANSMISSION SYSTEM

Pole 434 Medway to Chester, Double Arm

Inspection and Field Inventory by Waite on August 9, 1934



J. O. 6007



## TRANSMISSION SYSTEM

Pole 435 Medway to Chester, River Crossing

Inspection and Field Inventory by Waite on August 9, 1934



J. O. 6007



## TRANSMISSION SYSTEM

Pole 563 Mattawamkeag-Howland Showing Decay

Inspection and Field Inventory by Waite on August 14, 1934

J. O. 6007



## TRANSMISSION SYSTEM

Pole 563 Mattawamkeag-Howland

Inspection and Field Inventory by Waite on August 14, 1934

J. O. 6007



## TRANSMISSION SYSTEM

Pole 717 Mattawamkeag to Howland Line

Inspection and Field Inventory by Waite on August 14, 1934



J. O. 6007



## TRANSMISSION SYSTEM

Pole 539 Mattawamkeag to Howland Line with Switch

Inspection and Field Inventory by Waite on August 14, 1934

J. O. 6007

25-2 Mattawamkeag - Howland 7-943



## TRANSMISSION SYSTEM

Pole 943 Mattawamkeag to Howland Line with Switch

Inspection and Field Inventory by Waite on August 14, 1934

J. O. 6007



## TRANSMISSION SYSTEM

Pole 634 Medway-Howland, with Chester Distribution

Inspection and Field Inventory by Waite on August 14, 1934



J. O. 6007

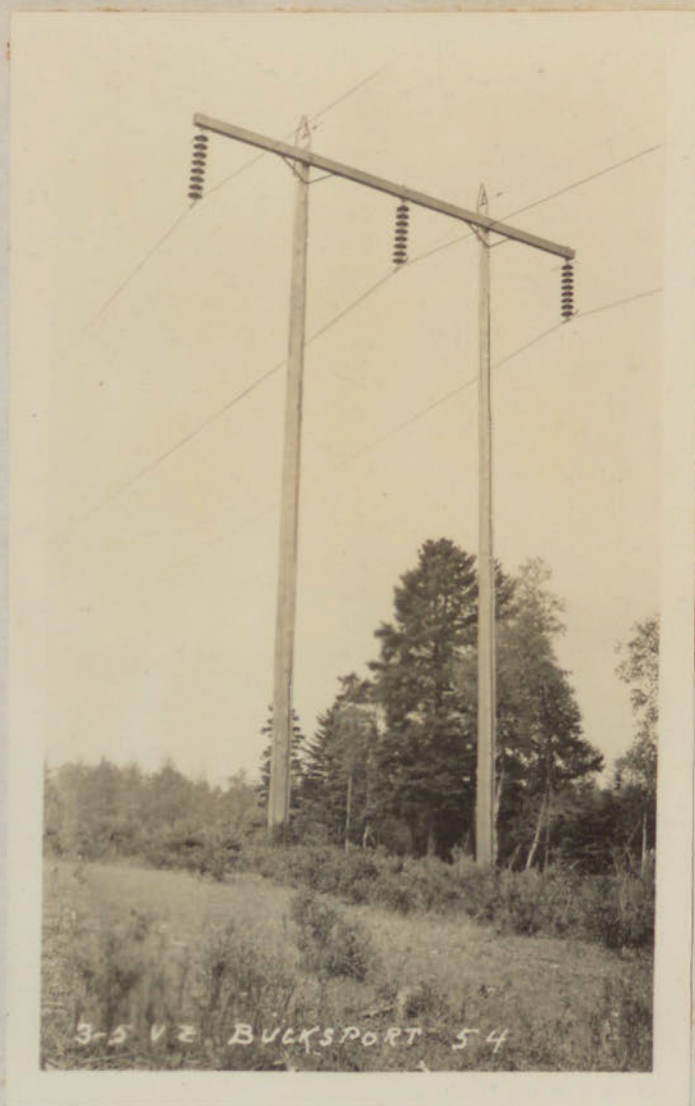


## TRANSMISSION SYSTEM

Frame 52 Veazie to Bucksport, Double Arm

Inspection and Field Inventory by Waite on August 1, 1934

J. O. 6007



## TRANSMISSION SYSTEM

Frame 54 Veazie to Bucksport, Standard

Inspection and Field Inventory by Waite on August 1, 1934

J. O. 6007



## TRANSMISSION SYSTEM

Frame 60 Veazie to Bucksport, Small Angle

Inspection and Field Inventory by Waite on August 1, 1934



J. O. 6007



## TRANSMISSION SYSTEM

Frame 90 Veazie to Bucksport, Rock Fill

Inspection and Field Inventory by Waite on August 1, 1934